
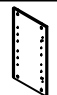


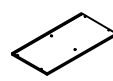
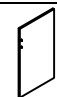
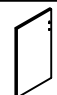
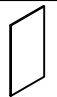

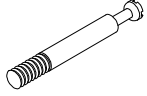
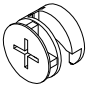
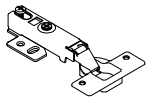

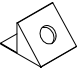


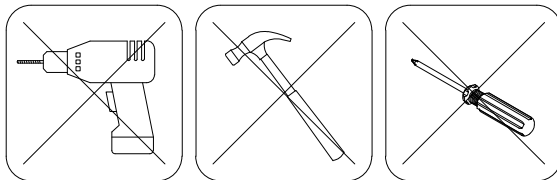
## Parts List



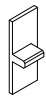


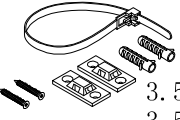

NO.	Drawing	Dimension	QTY
1		750*380*15mm	1
2		650*360*15mm	1
3		650*360*15mm	1
4		650*360*15mm	1
5		750*380*15mm	2

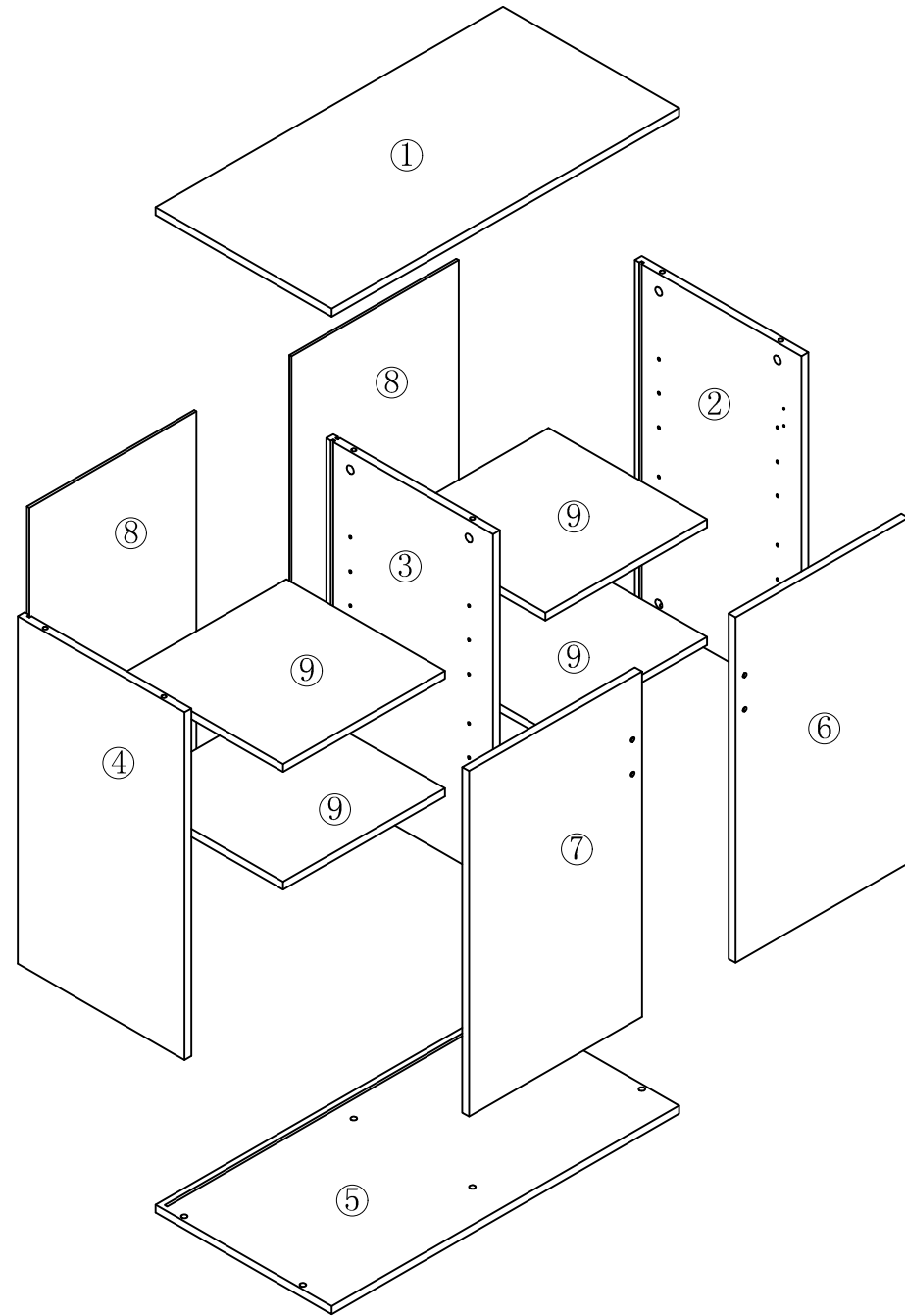
NO.	Drawing	Dimension	QTY
6		646*373*15mm	1
7		646*373*15mm	1
8		660*361*4mm	2
9		3349*342*15mm	4

# Hardware Fitting

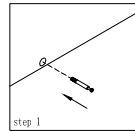
NO.	Drawing	QTY
A		12
B		12
C		4
D	 3.5*14mm	36
E		20



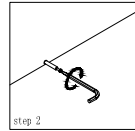
NO.	Drawing	QTY
F	 3.0*14mm	20
G		16
H		2
I	 6*15mm	4
J	 120H	4
K	 3.5*35mm 3.5*14mm	2
		1



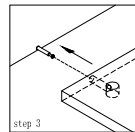
## Cam Coupling Using Methods



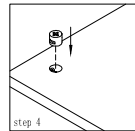
**Step1.**  
Connect the cam coupling A as directed in the assembly instructions using hand.



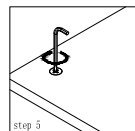
**Step2.**  
Screw the cam coupling A as directed in the assembly instructions.



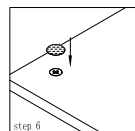
**Step3.**  
Push the cam coupling A into the entry hole.



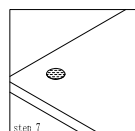
**Step4.**  
Insert the cam coupling B as shown in the instructions.



**Step5.**  
Turn the cam coupling B clockwise with a screwdriver

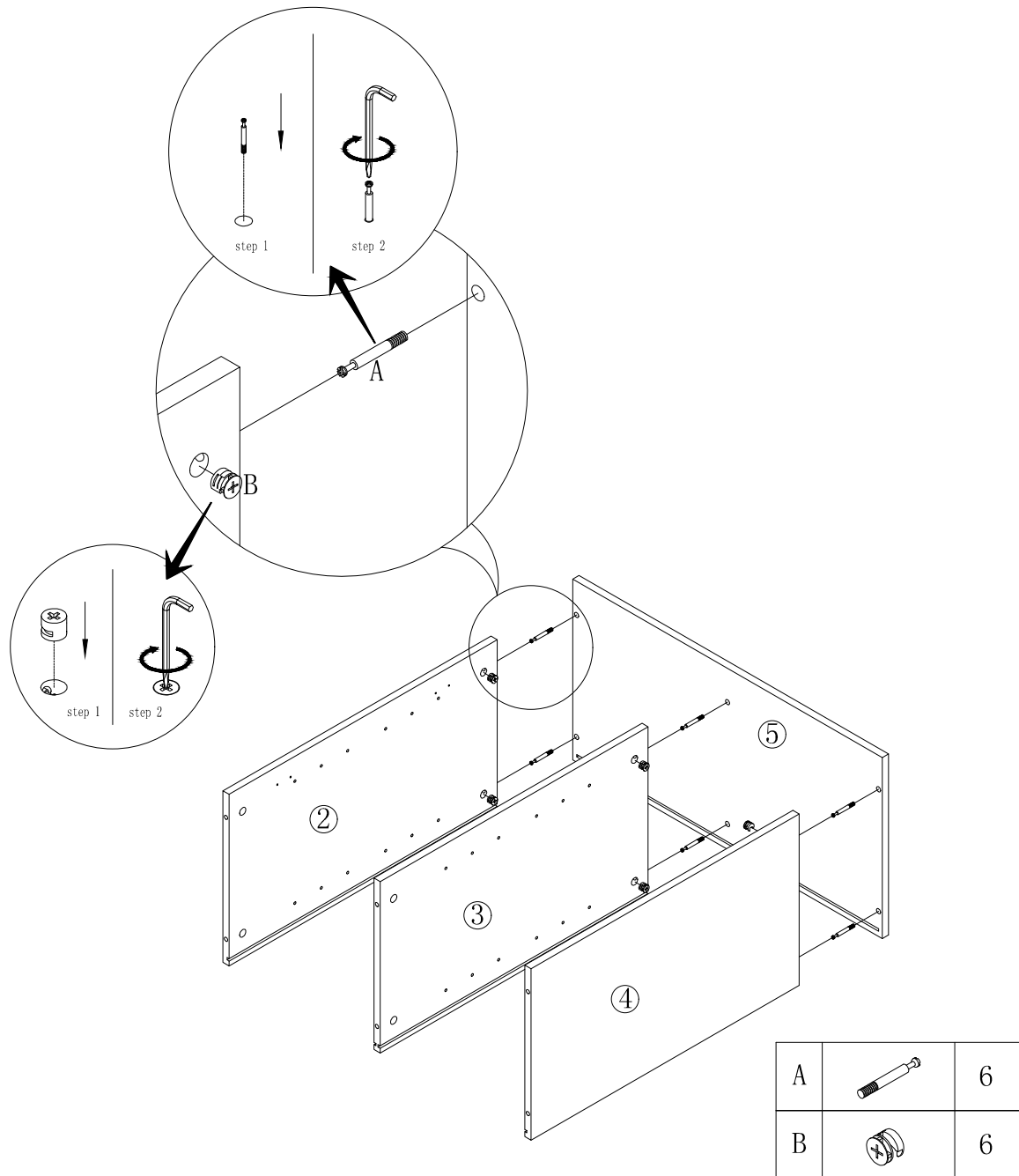


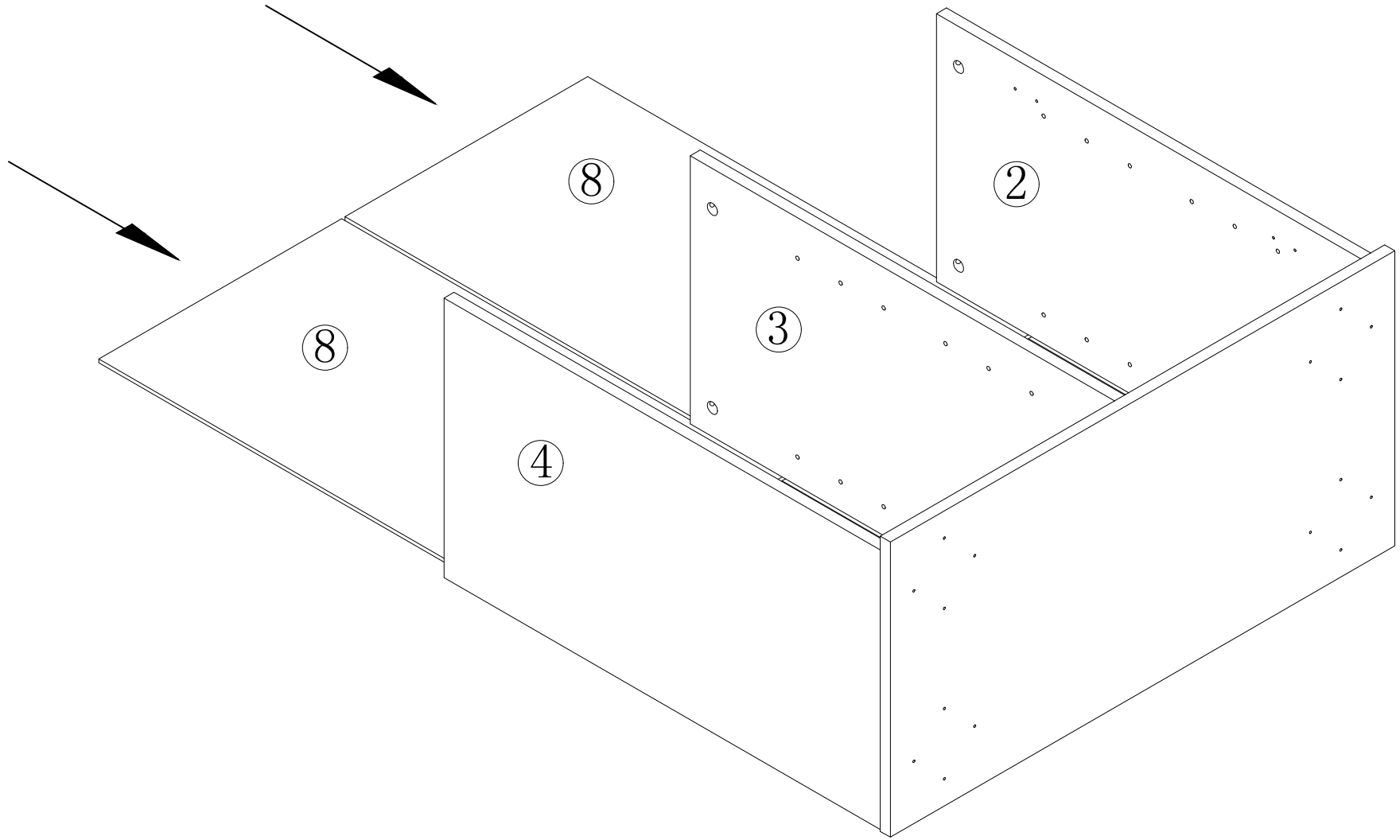
**Step6.**  
Put on Beautycam.

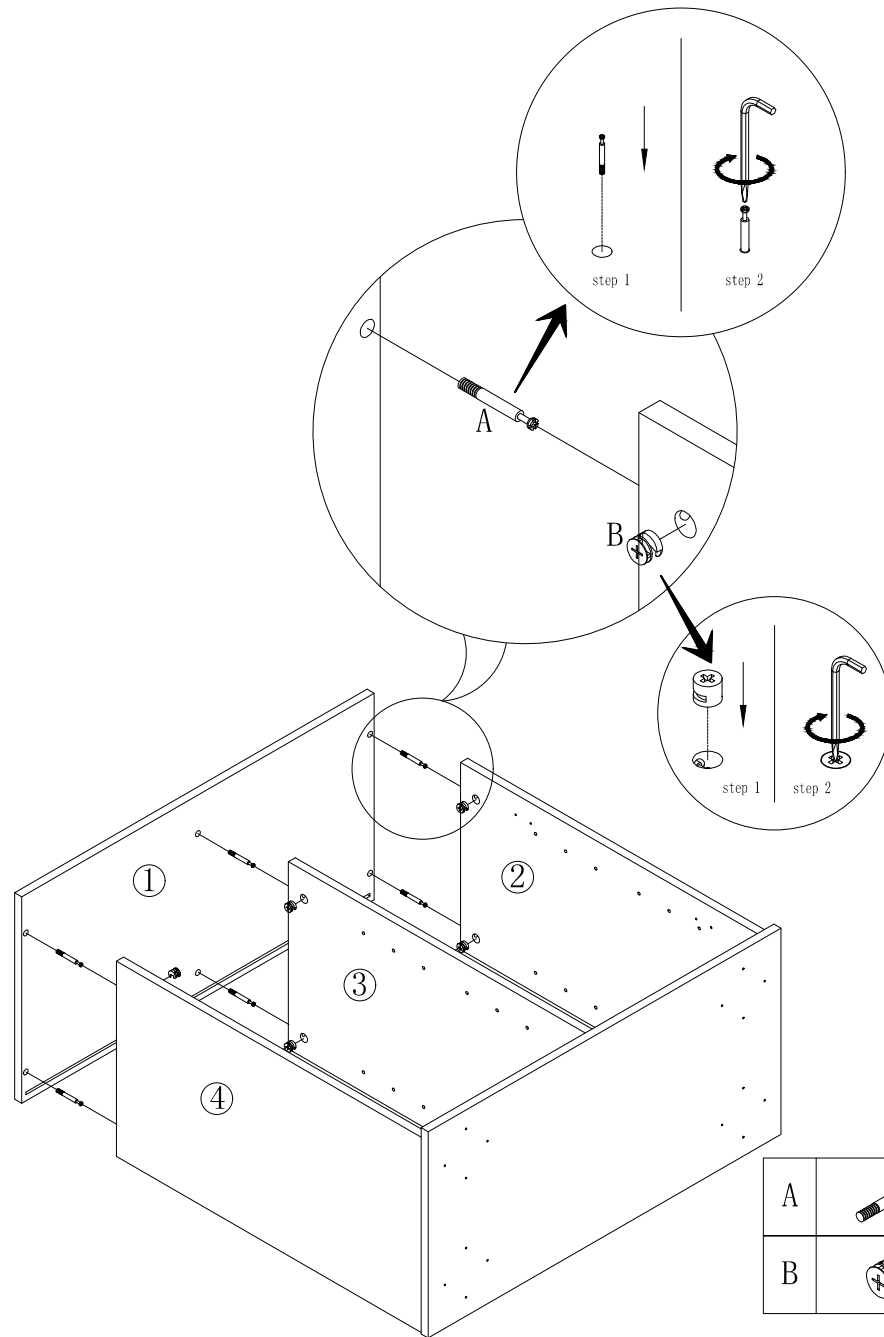


**Step7.**  
Finished.




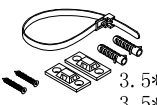
You should feel a click when the camlock is locked in place.  
The joint is now secure.

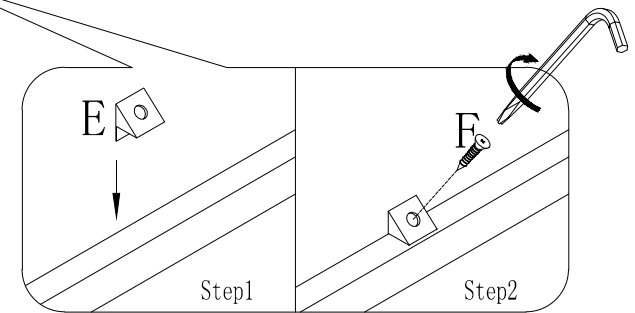
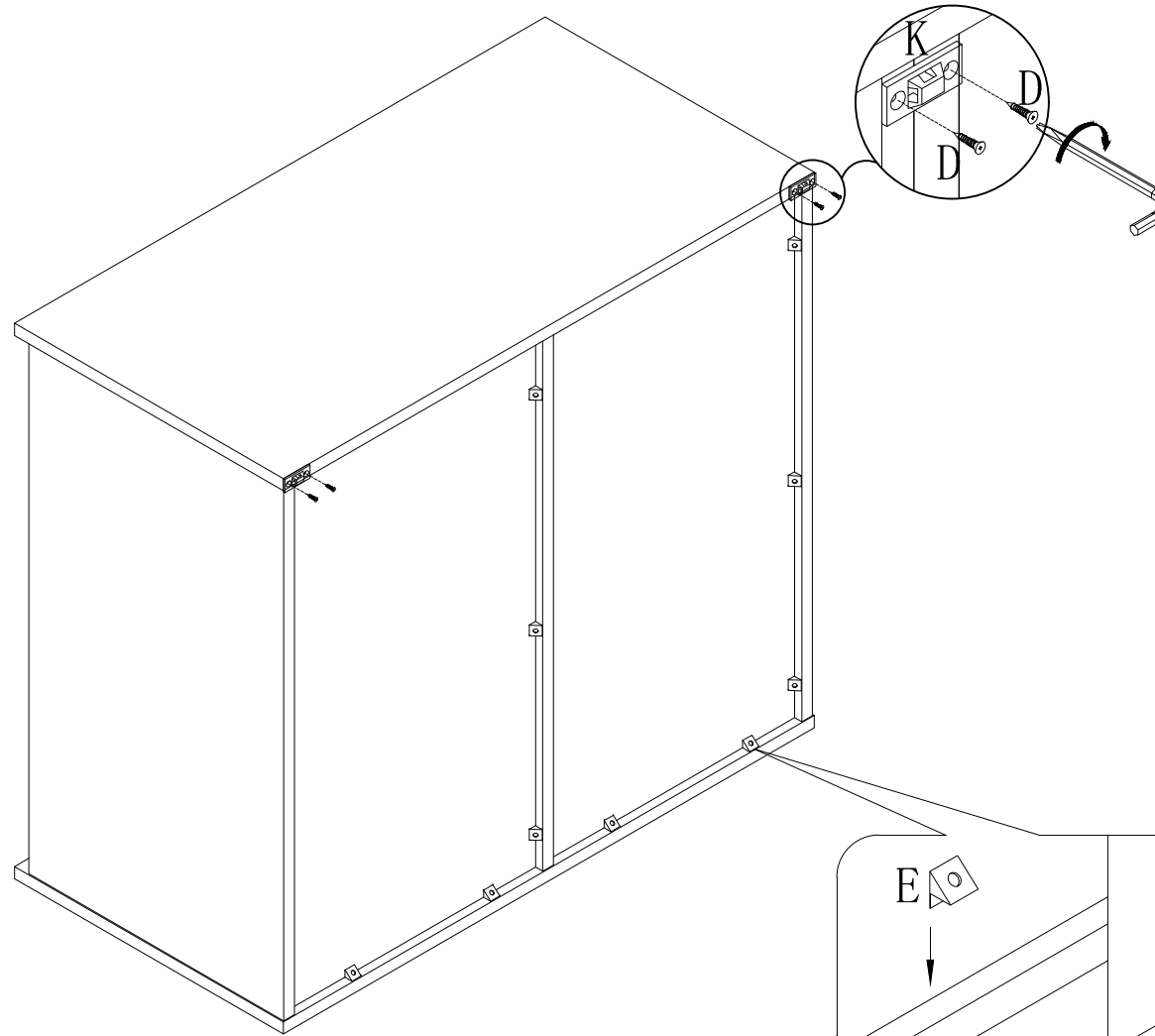


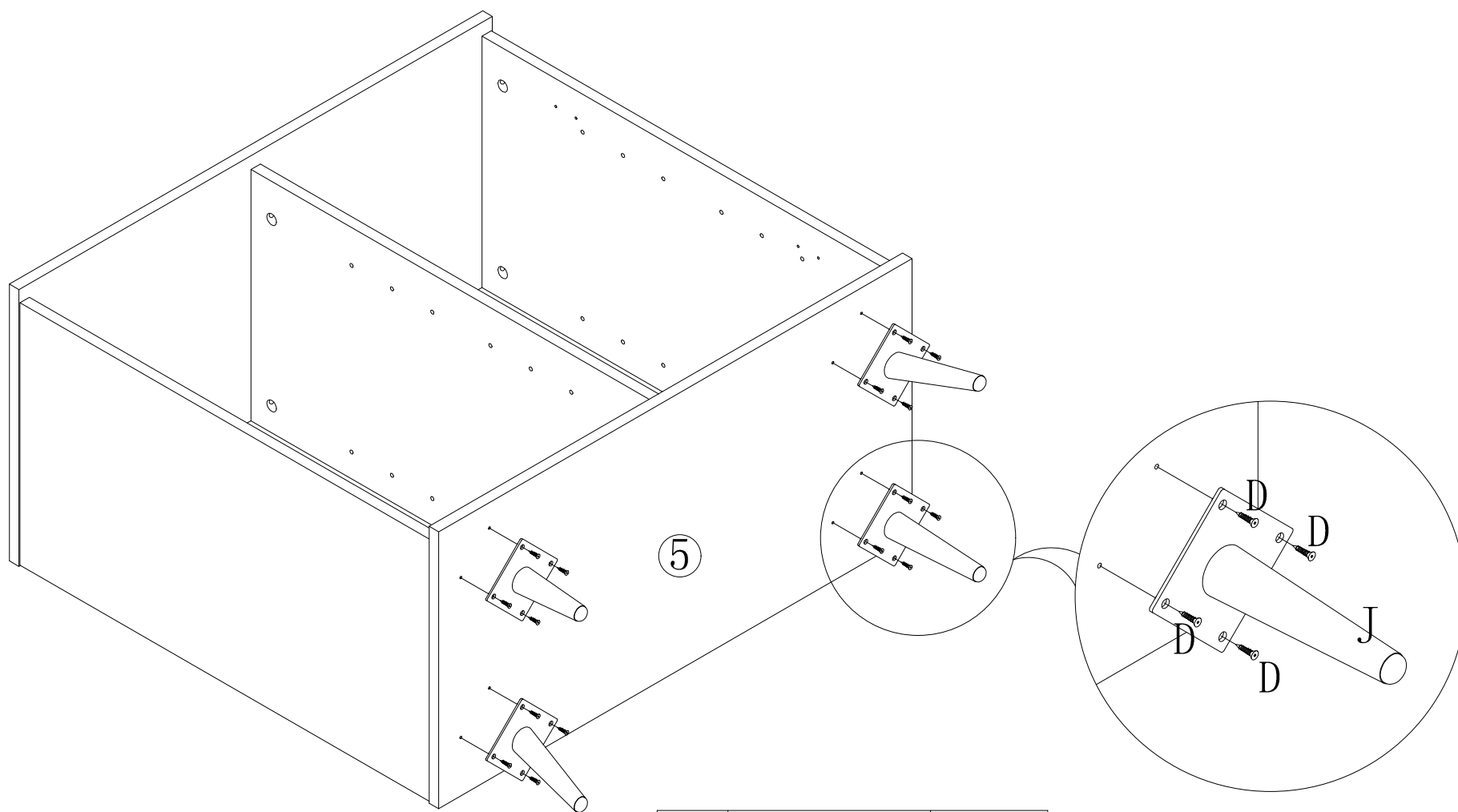



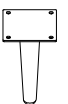


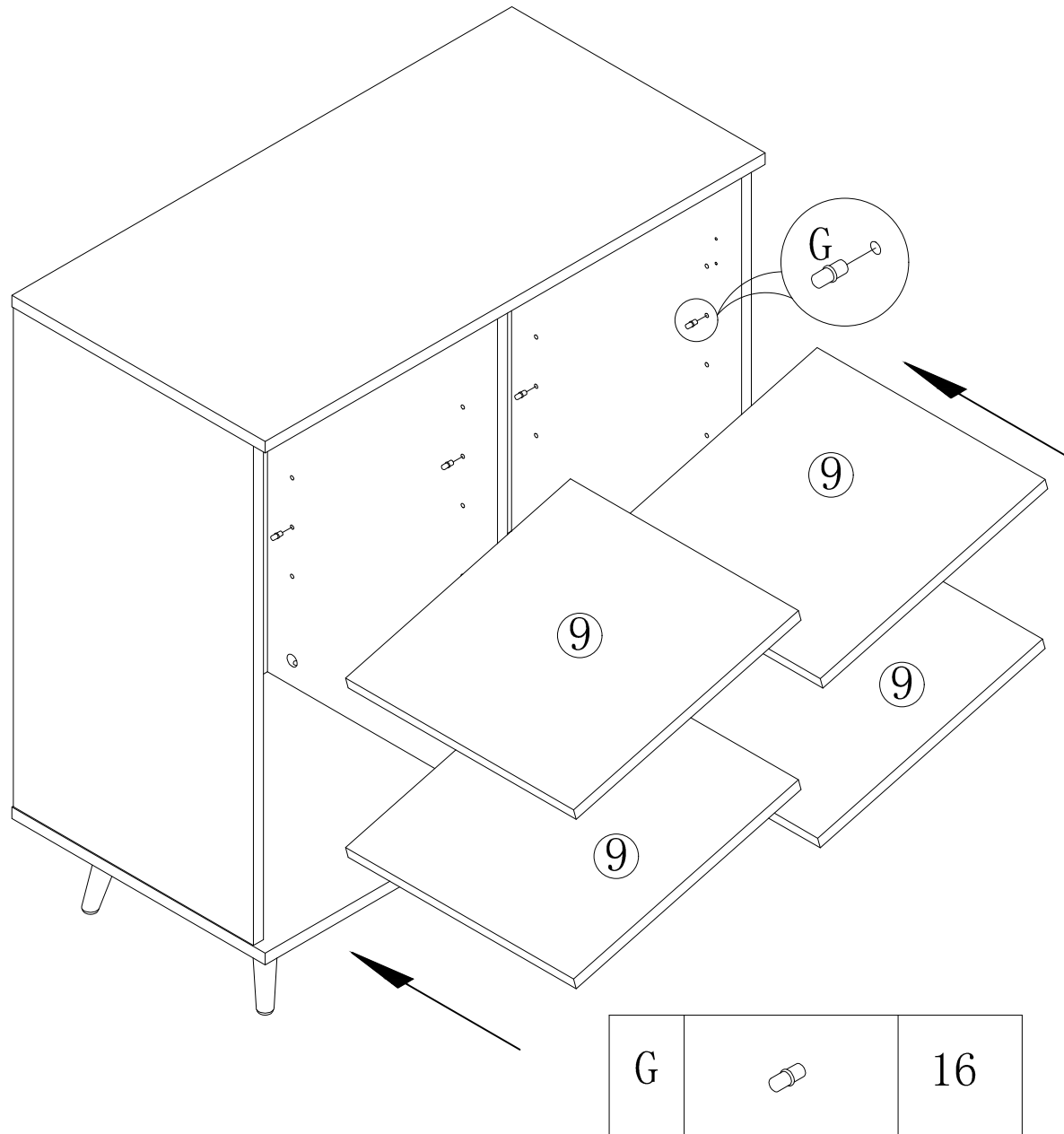


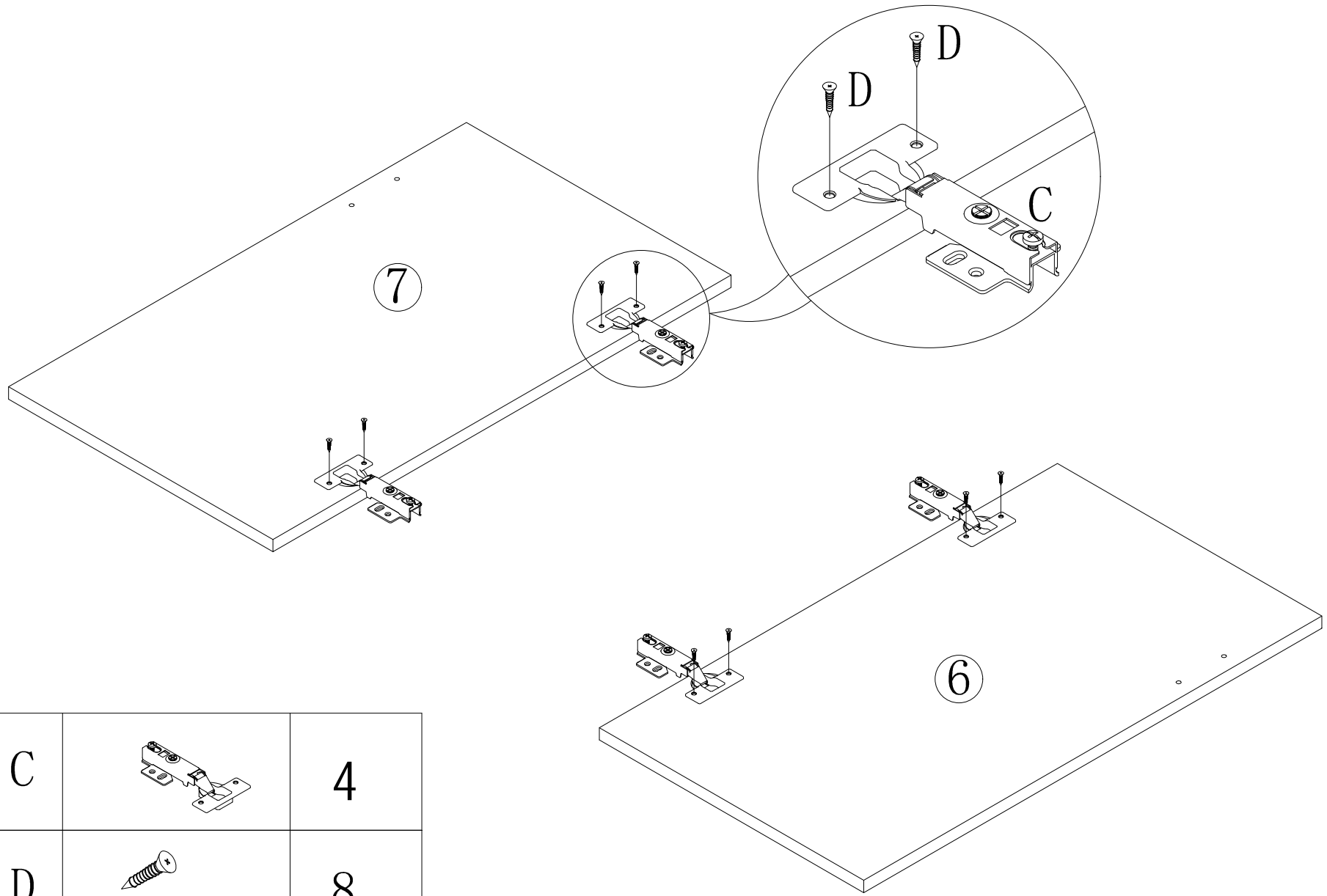
E		20
F	 3.0*14mm	20
D	 3.5*14mm	4
K	 3.5*35mm 3.5*14mm	2



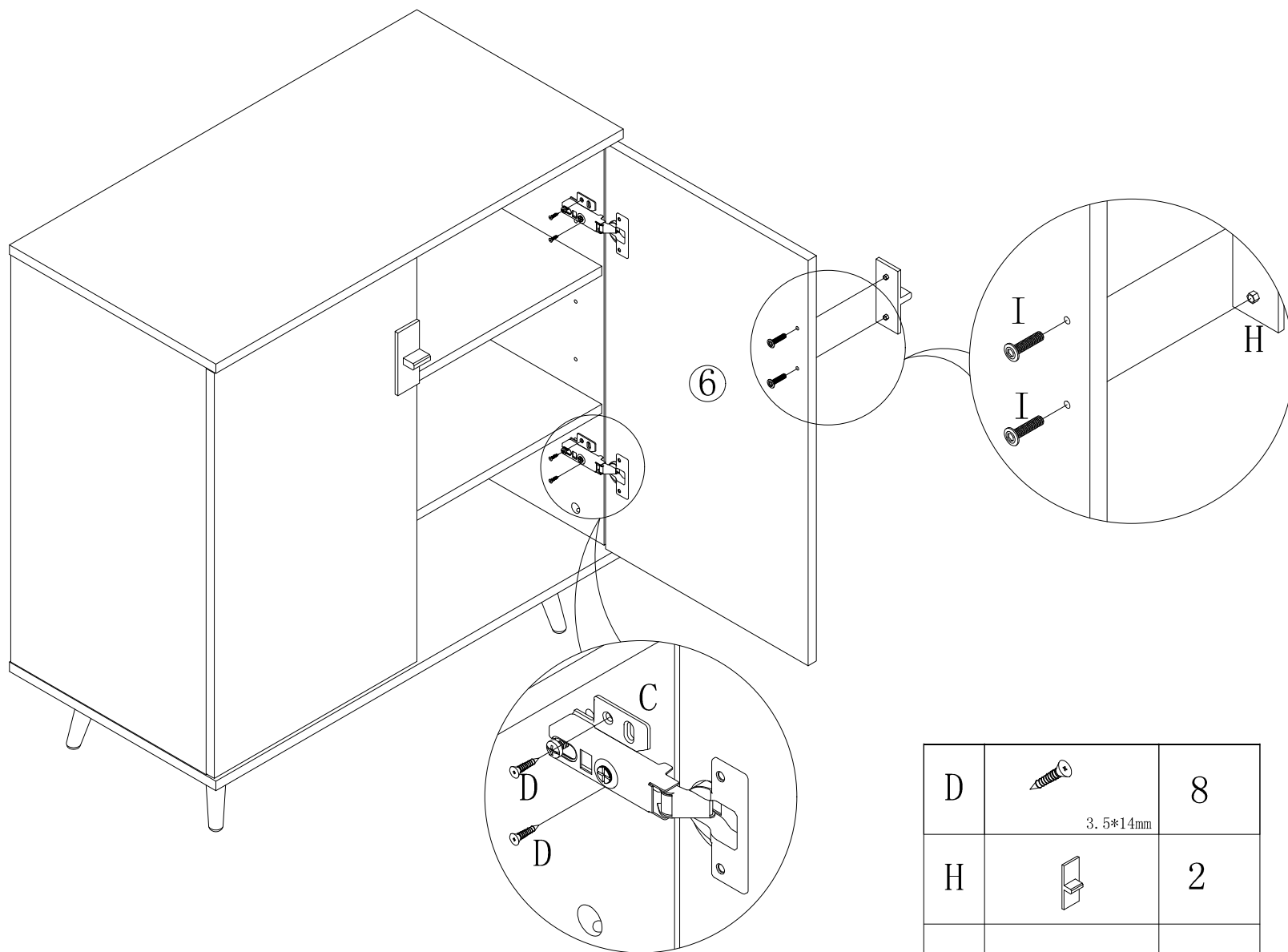





D	 3.5*14mm	16
J	 120H	4

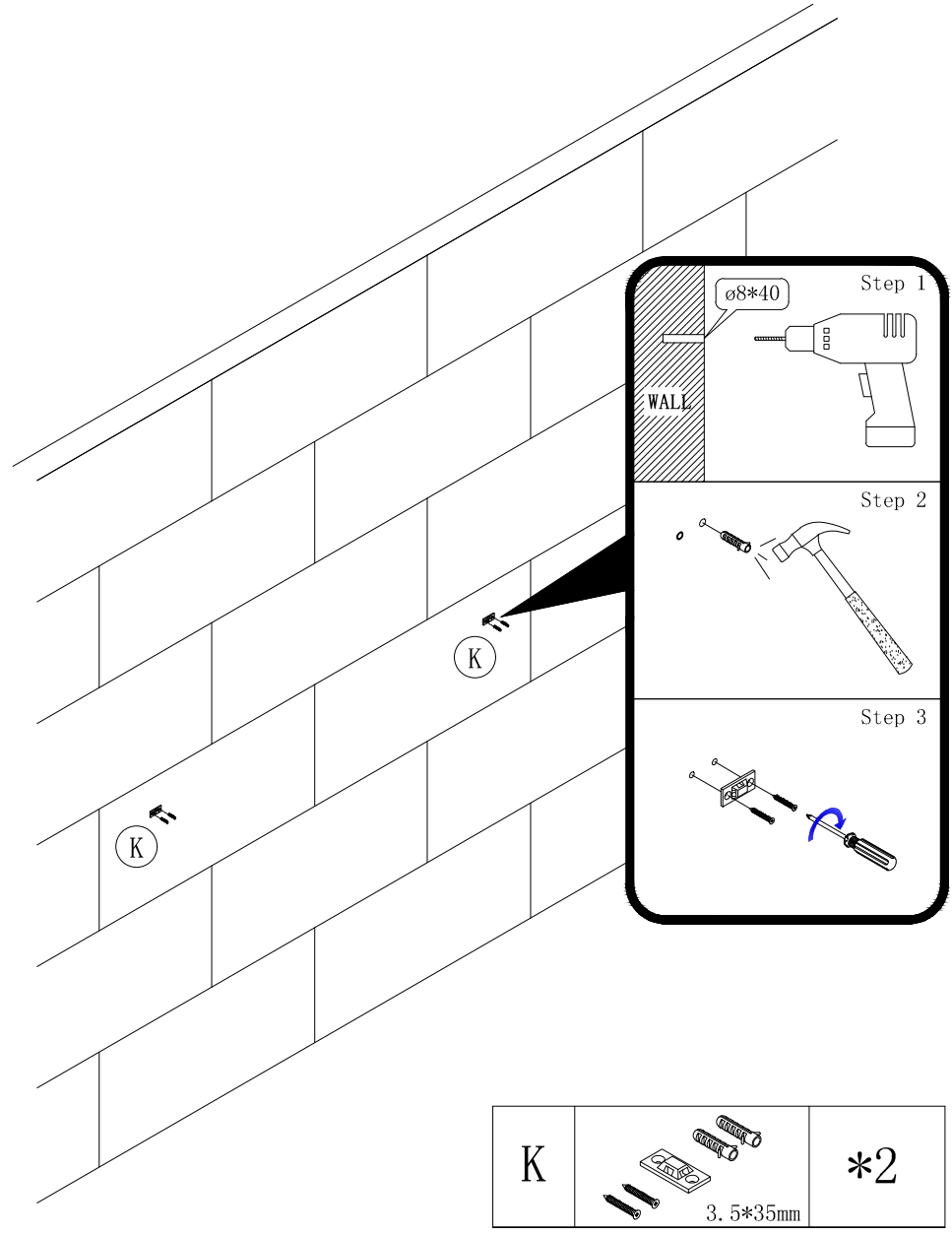


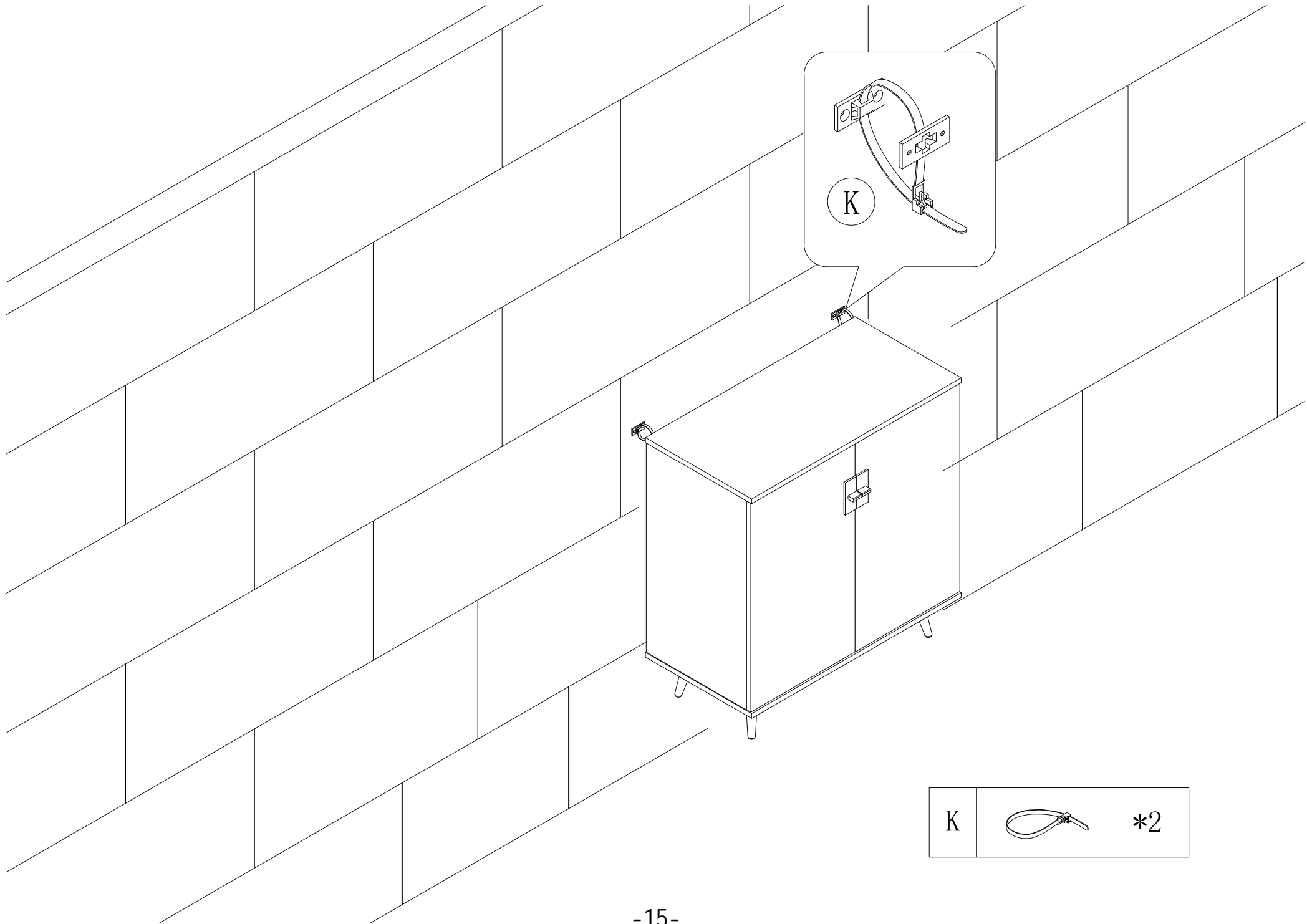



C		4
D	 3.5*14mm	8



D	 3.5*14mm	8
H		2
I	 6*15mm	4





K		*2
---	---	----