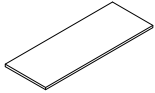
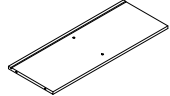
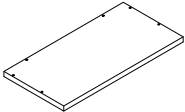

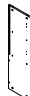
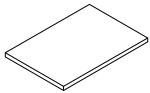
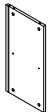
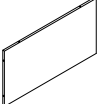

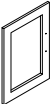
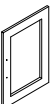
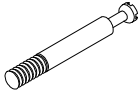
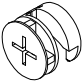
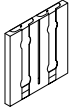
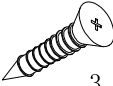
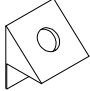



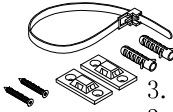

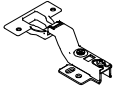
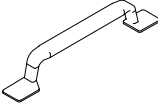


## Parts List

NO.	Drawing	Dimension	QTY
1		800*300*15mm	1
2		768*298*15mm	1
3		800*400*30mm	1
4		970*298*15mm	1
5		970*298*15mm	1
6		375*260*15mm	2

NO.	Drawing	Dimension	QTY
7		555*280*15mm	1
8		768*400*15mm	1
9		565*386*4mm	2
10		551*381*15mm	1
11		551*381*15mm	1

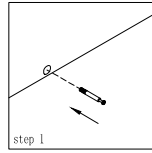
# Hardware Fitting

NO.	Drawing	QTY
A		24
B		24
C		1
D	 3.5*14mm	32
E		16
F	 3.0*14mm	16

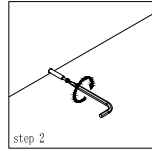
NO.	Drawing	QTY
G	 3.5*35mm 3.5*14mm	2
H		8
I		4
J		2
K	 4*18mm	4
		1



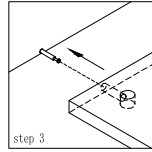
# Cam Coupling Using Methods



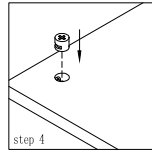
Step1.  
Connect the cam coupling A as directed in the assembly instructions using hand.



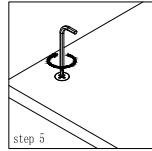
Step2.  
Screw the cam coupling A as directed in the assembly instructions.



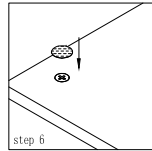
Step3.  
Push the cam coupling A into the entry hole.



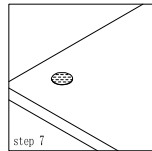
Step4.  
Insert the cam coupling B as shown in the instructions.



Step5.  
Turn the cam coupling B clockwise with a screwdriver



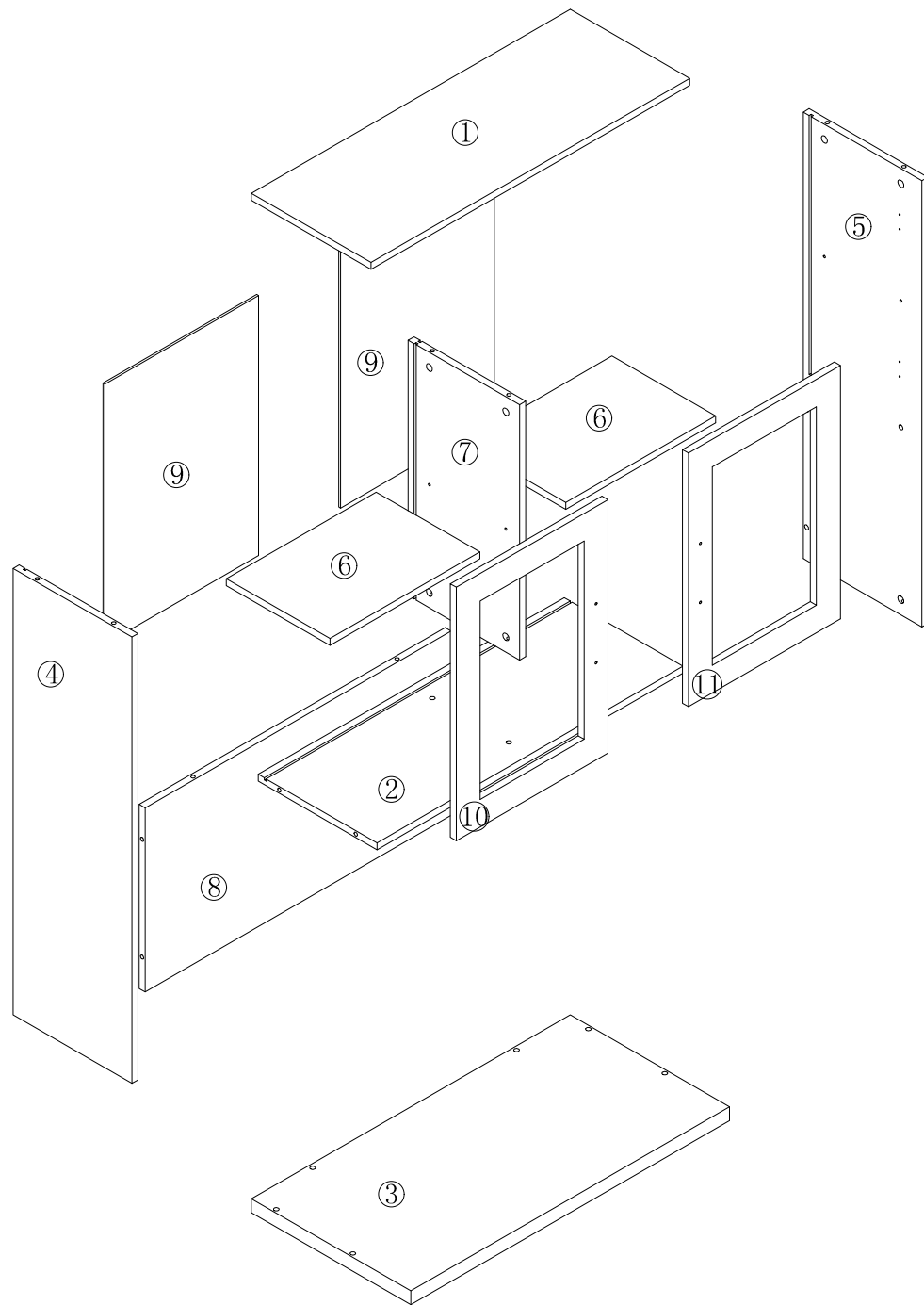
Step6.  
Put on Beautycam.

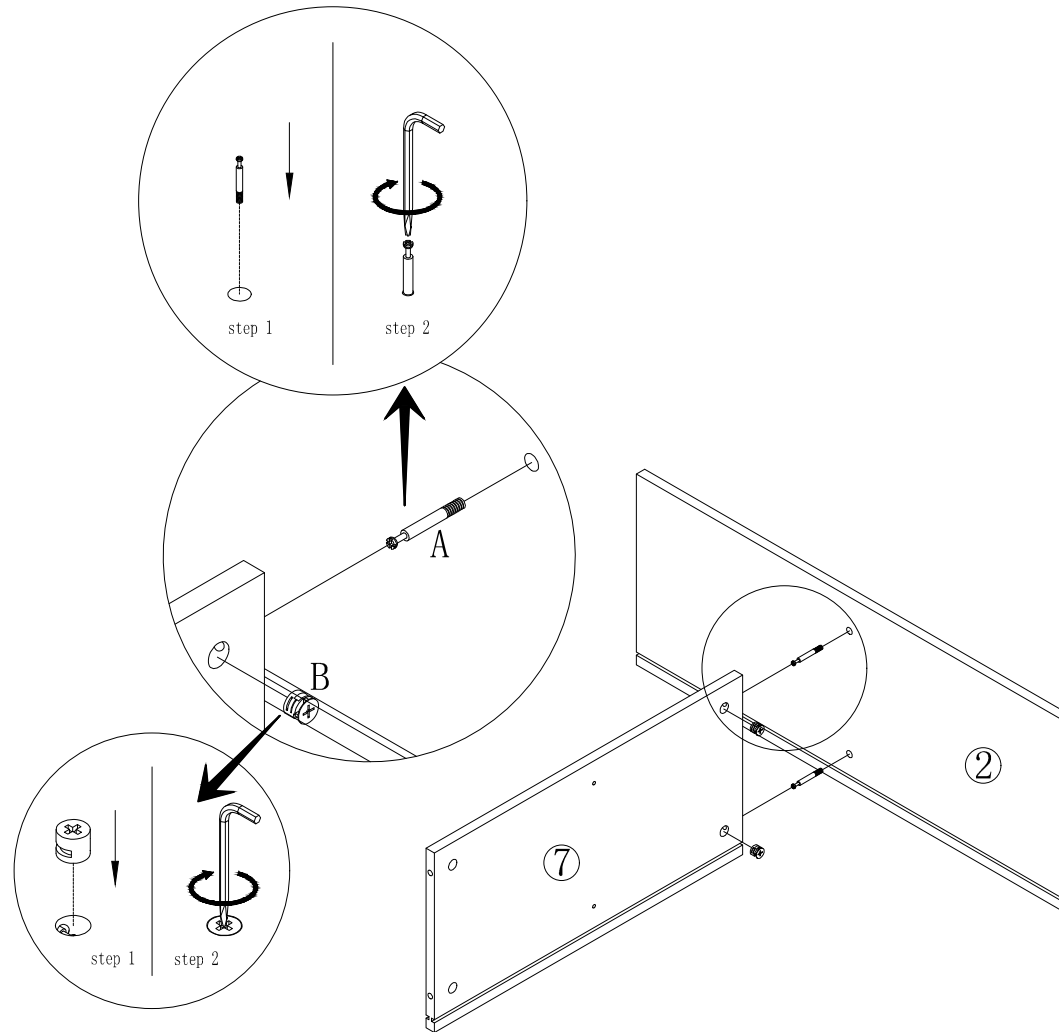




Step7.  
Finished.

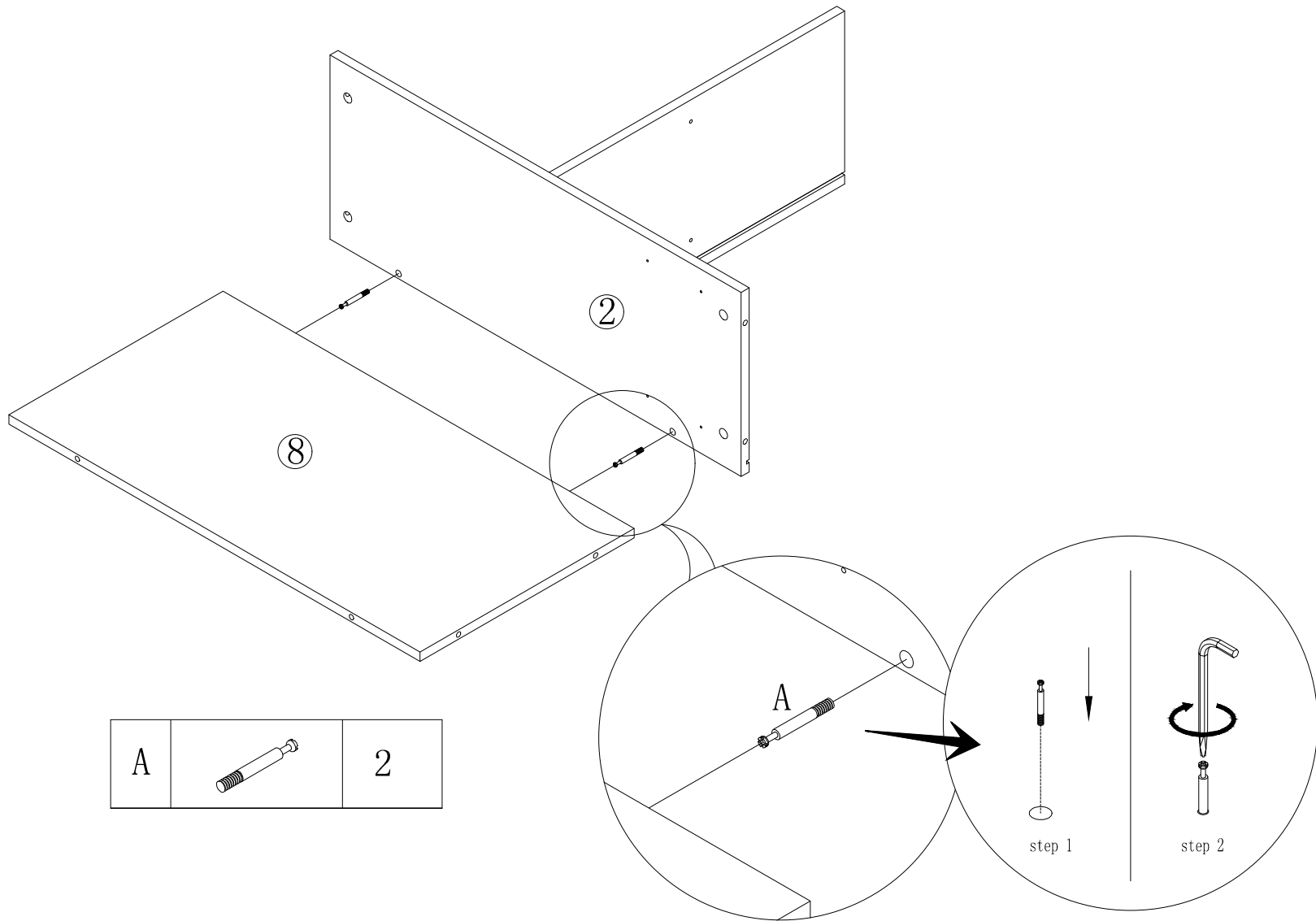
You should feel a click when the camlock is locked in place.  
The joint is now secure.

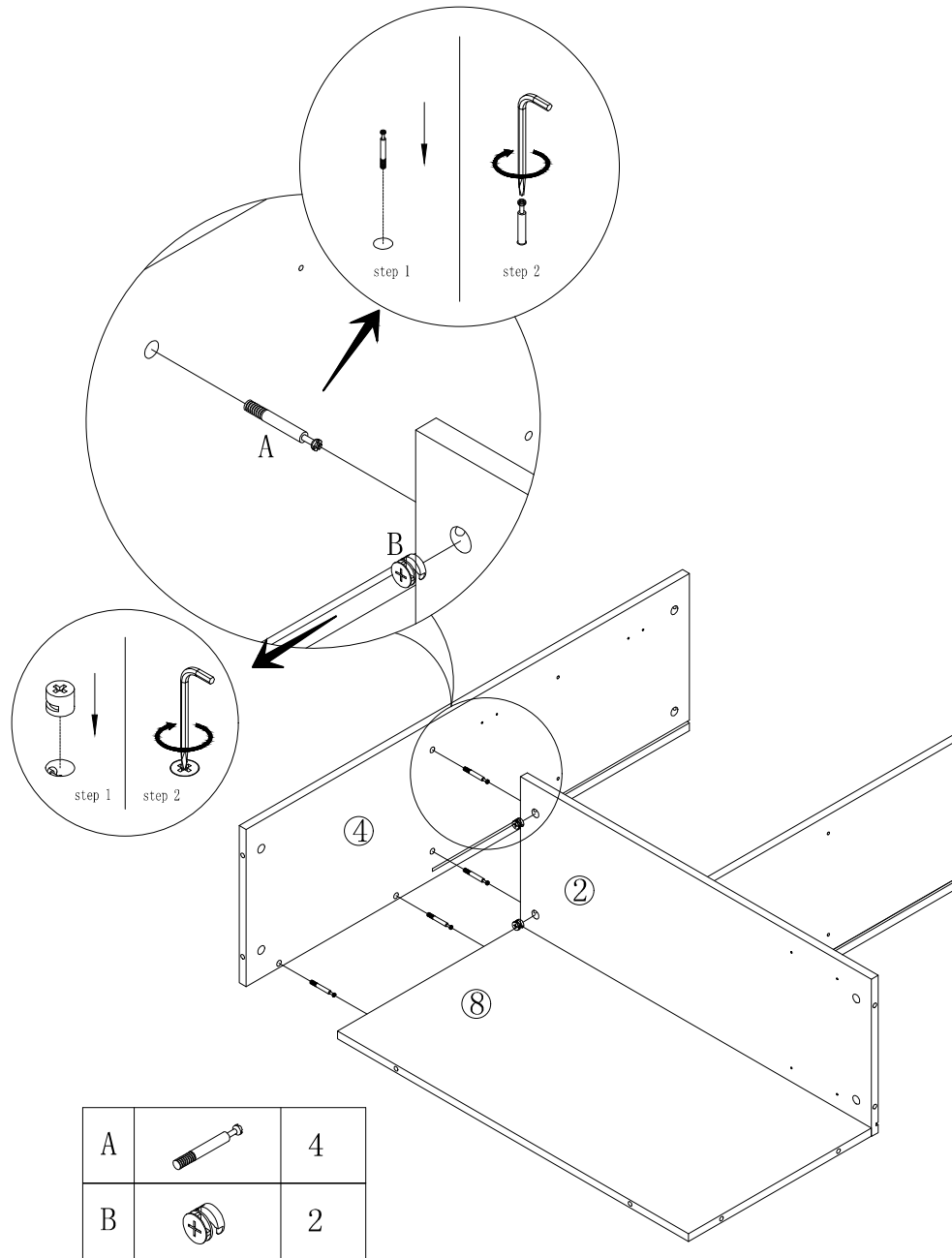






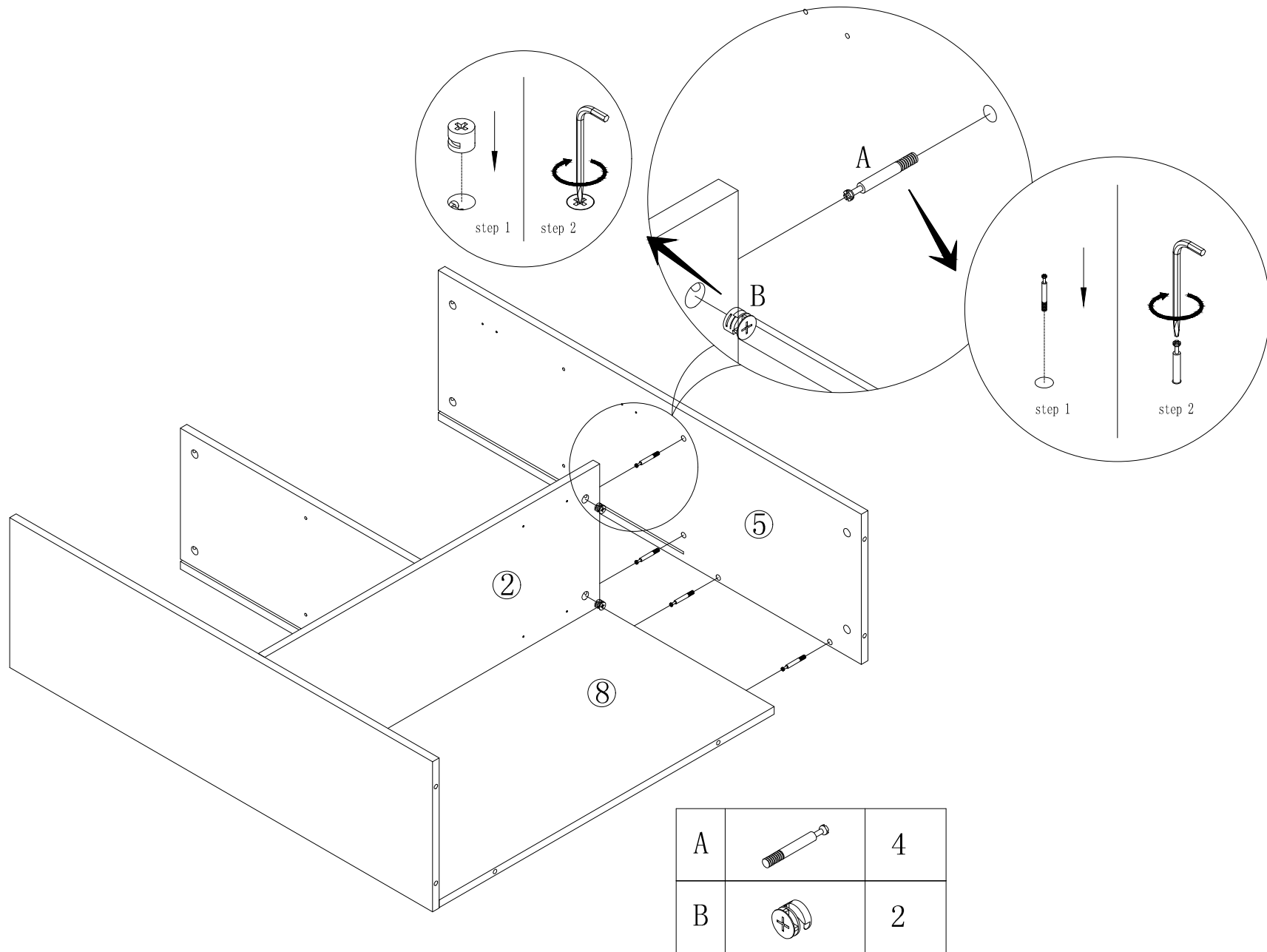



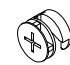
A		2
B		2

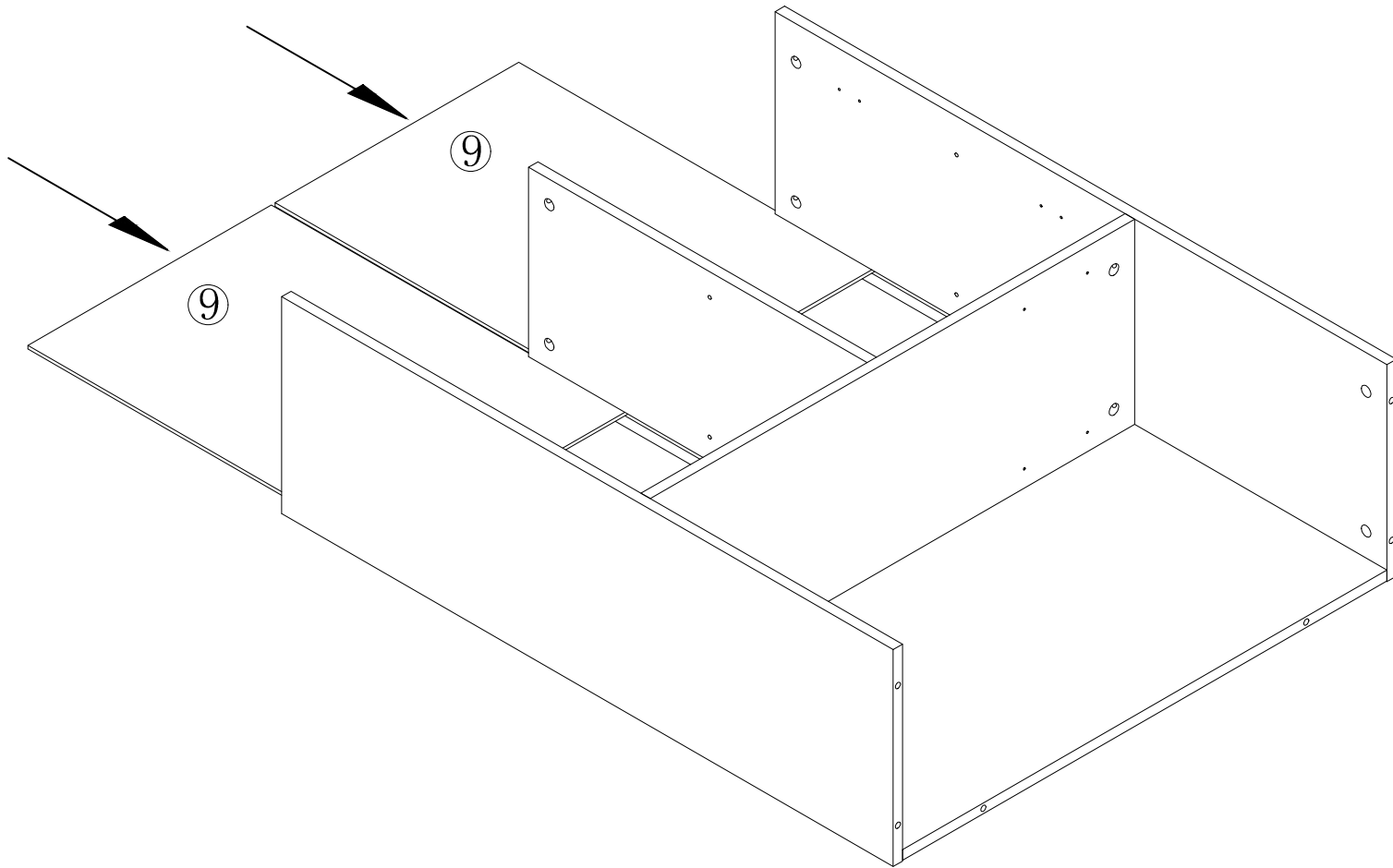


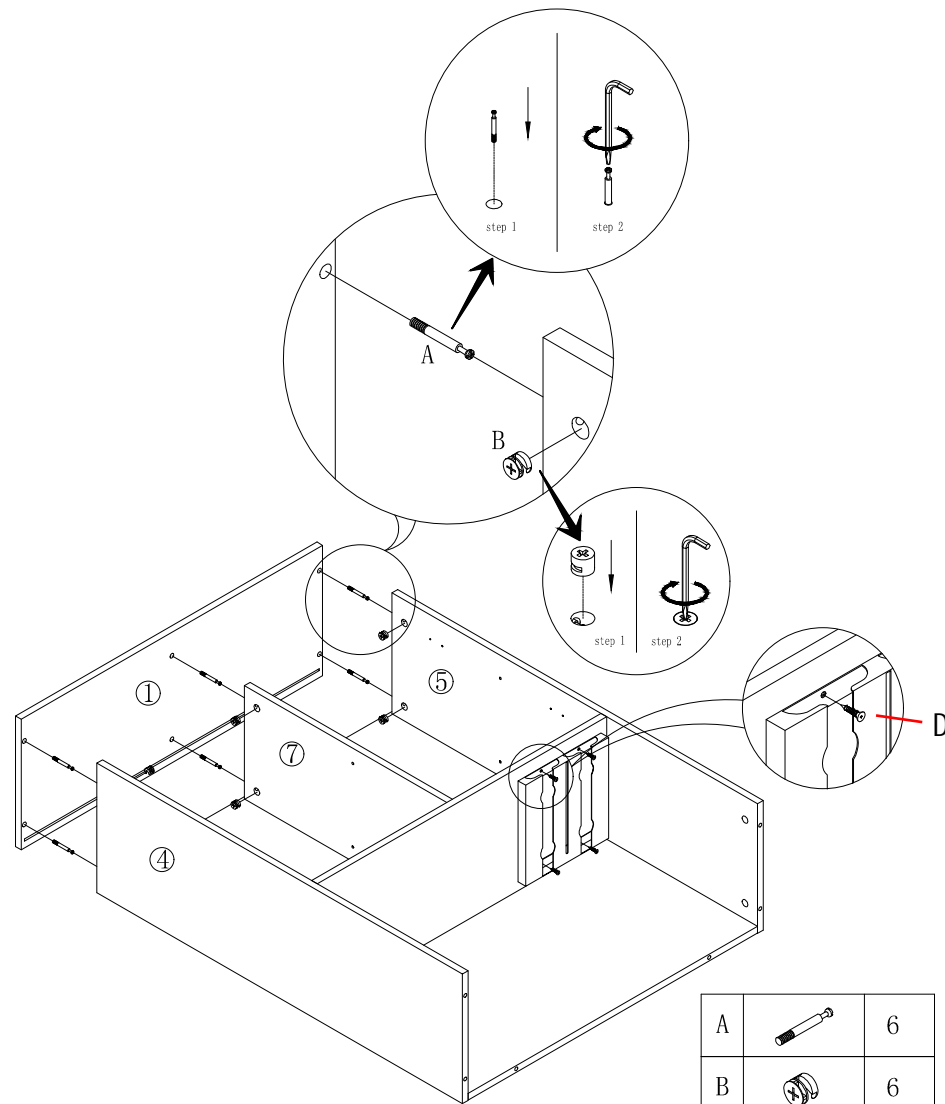






A		4
B		2

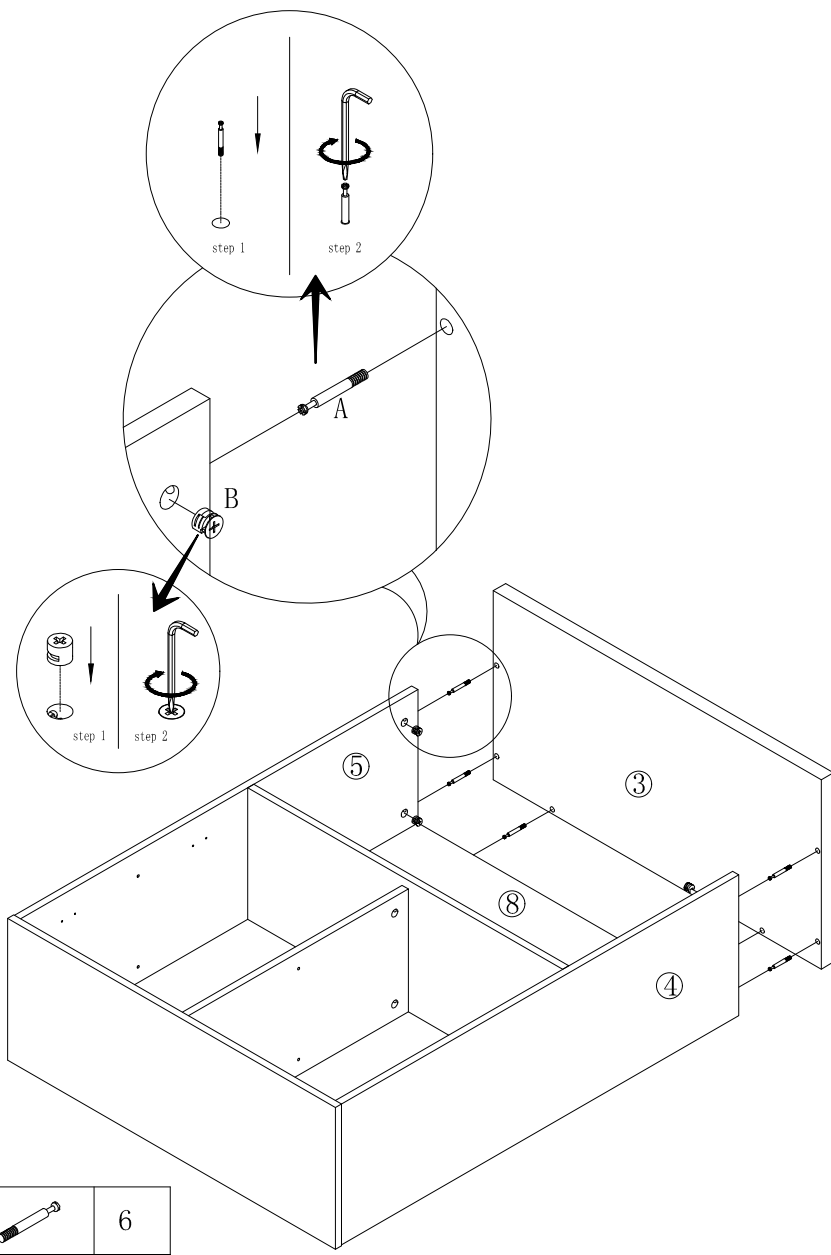




A		4
B		2



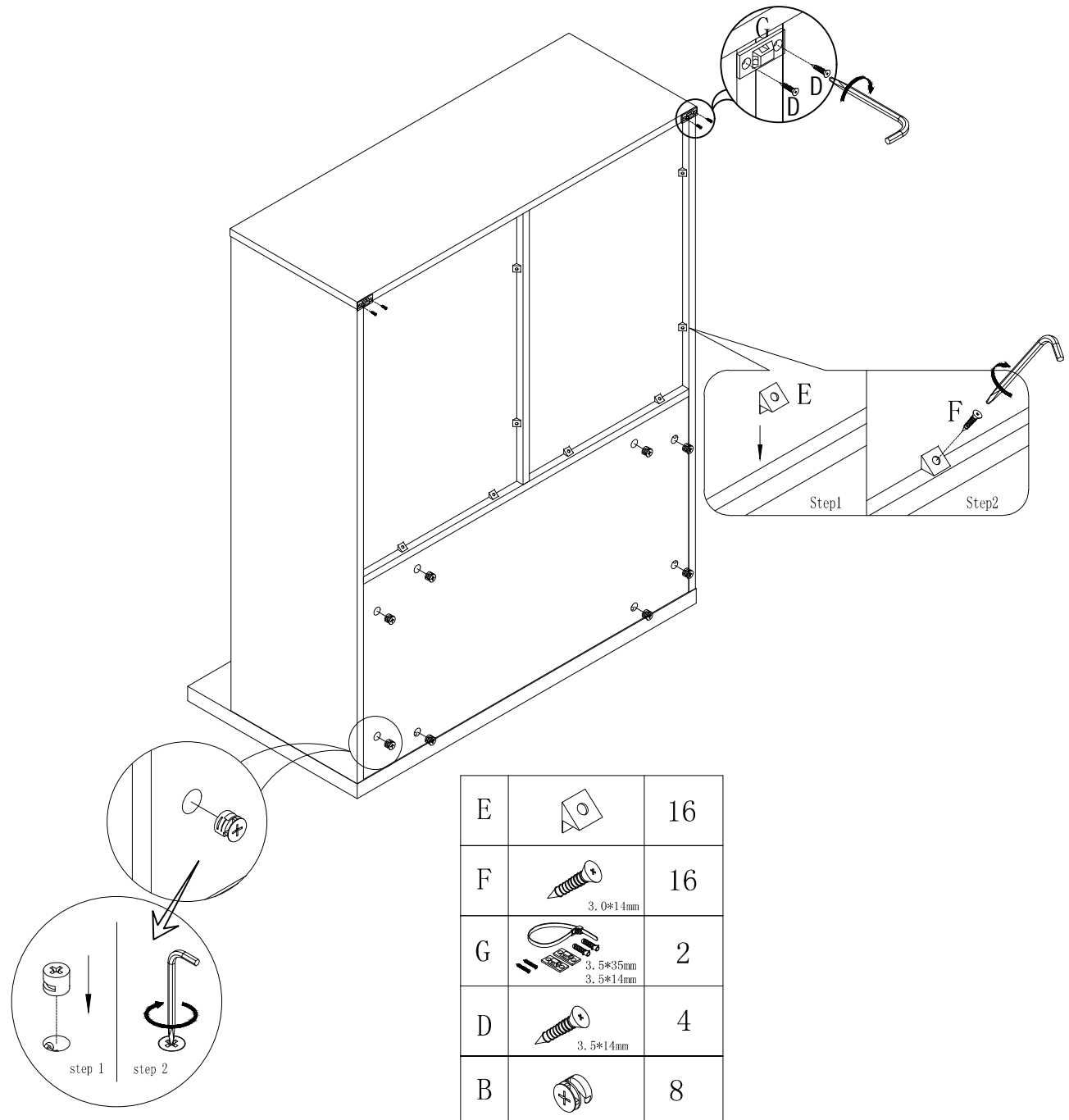







A		6
B		6
C		1
D	 3.5*14mm	4

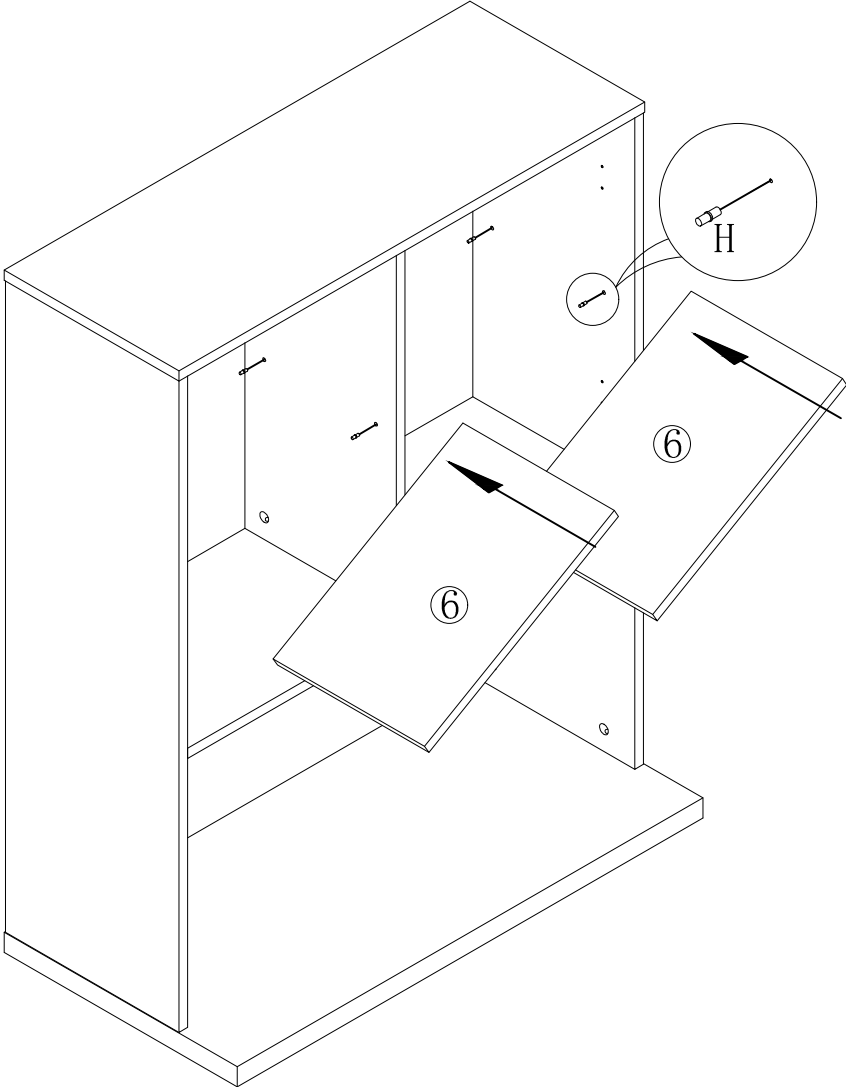



A		6
B		4

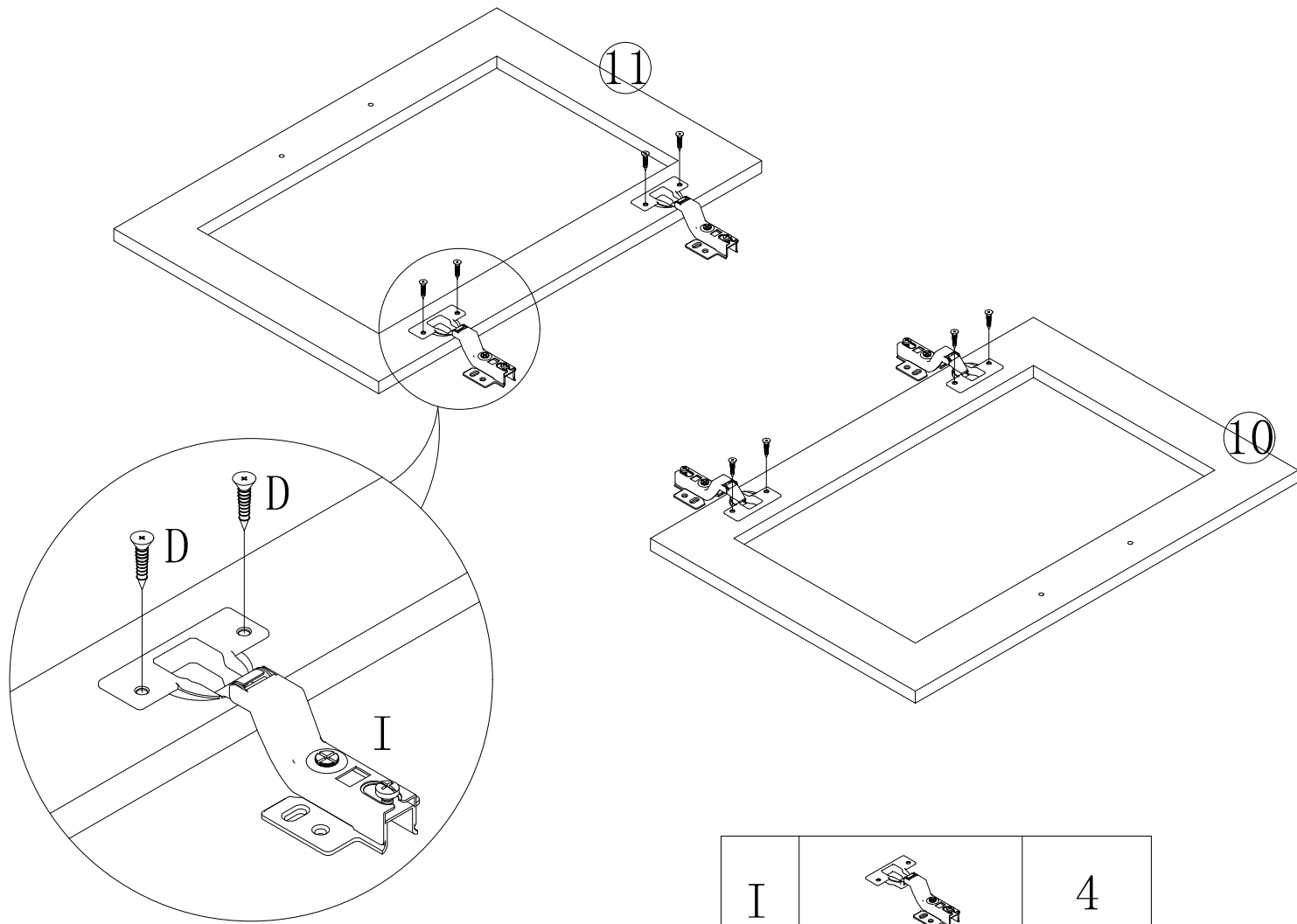


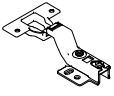



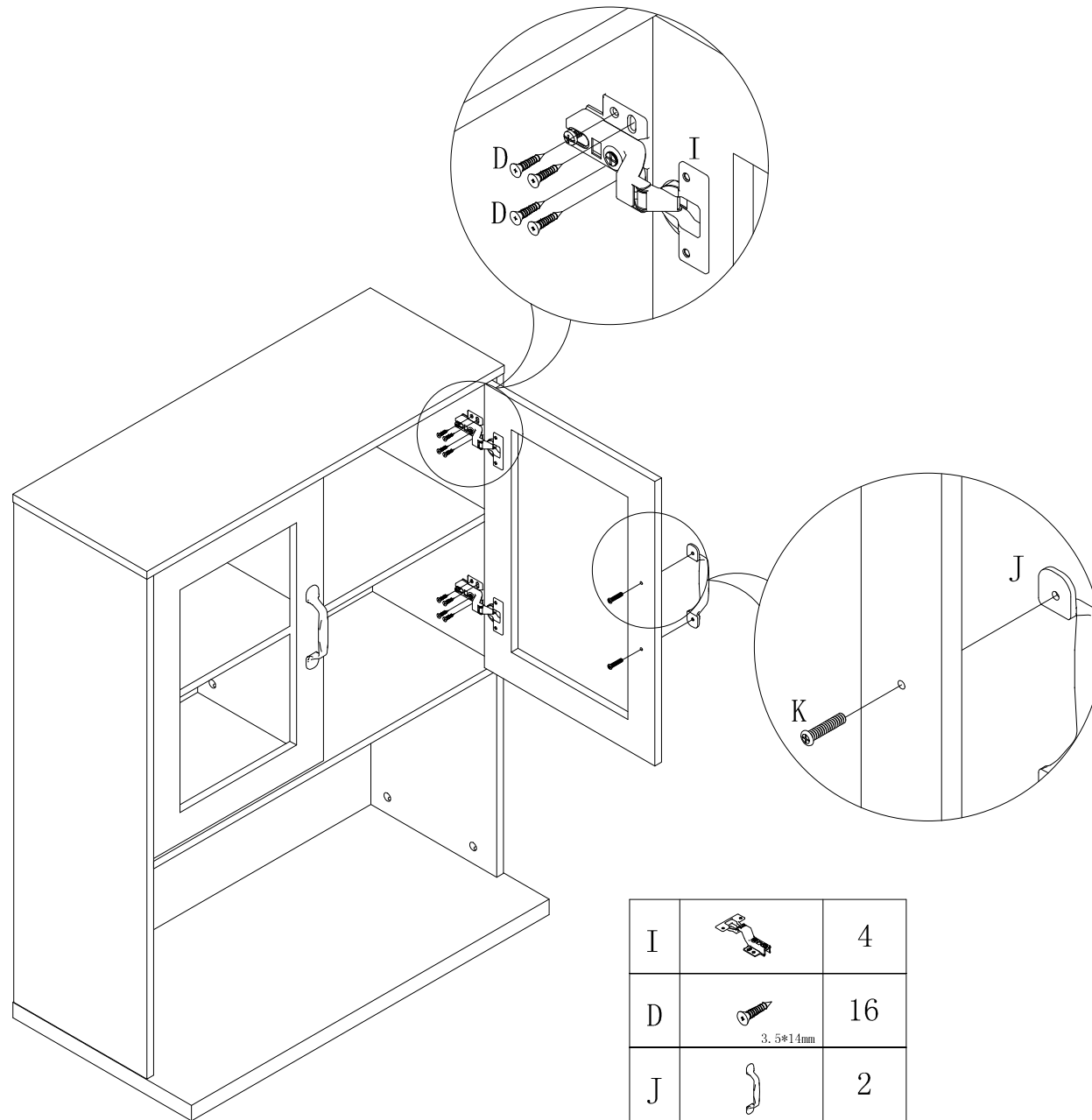
E		16
F	 3.0*14mm	16
G	 3.5*35mm 3.5*14mm	2
D	 3.5*14mm	4
B		8







H	 5mm	8
---	--	---



I		4
D	 3.5*14mm	8



I		4
D	 3.5*14mm	16
J		2
K	 4*18mm	4

