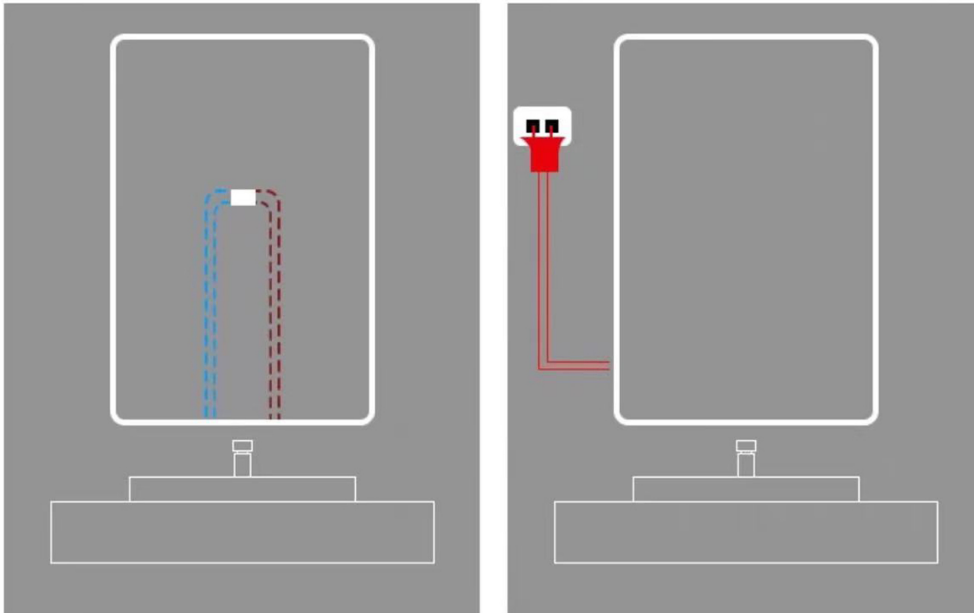


WIRING GUIDE

● RESERVED LAMP LINE ● POWER CORD

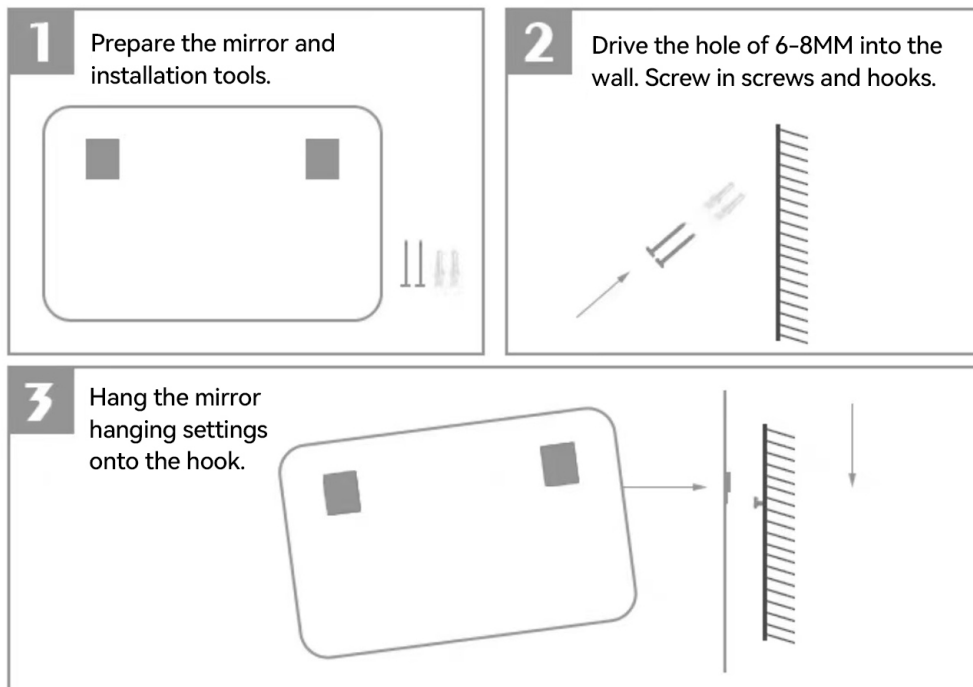


1. Cut off the power cord of connecting the plug to the wall
The wiring port can be hidden on the back of the mirror

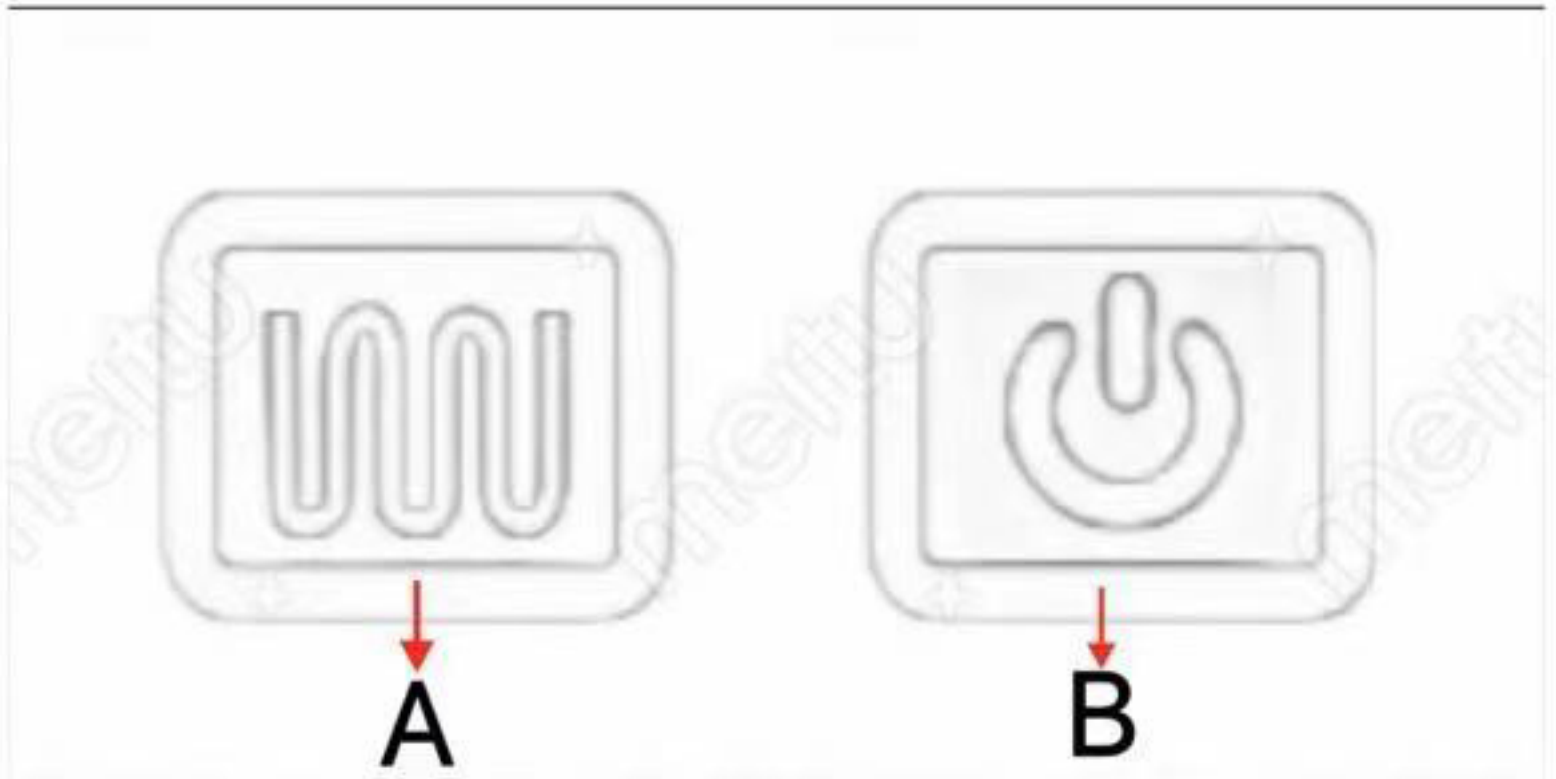
2. The mirror plugs directly into the wall socket for use.

pour: Remark: Each mirror has a 1.1-meter power cord.

Installation Guide



Instructions



1: Click the A button to turn on the fog removal function

2: Click the B button to turn on the light. The B button has 3 colors to choose from, just click to switch

3: Long press the B button to adjust the light brightness