

Get to know your **DATION HANDRAIL LADDER!**



300LBS(136KG)TYPE IA EXTRA HEAVY DUTY RATED

MODEL#	DISCRPTION	Highest Standing Level	Step Width	Step Depth	Ladder Weight
99012-001	Telescopic Handrail	0.54m	0.34m	0.26m	5.40kg
99013-001	Telescopic Handrail	0.82m	0.34m	0.26m	7.29kg
99014-001	Telescopic Handrail	1.10m	0.34m	0.26m	9.11kg

DATION

HOME LADDER

TELESCOPIC

HANDRAIL LADDER

**TYPE IA EXTRA HEAVY DUTY RATED
300LBS/136KG WORKING LOAD**

USER INSTRUCTIONS

Congratulations on your purchase of the DATION HANDRAIL LADDER. These instructions, along with the safety labels on the stepstool, will help you get the most out of your HANDRAIL LADDER by learning how to use it safely. **Please do not ignore the instructions study them!** Your safety and satisfaction is most important to us.

Welcome to the DATION family!

HANDRAIL LADDER INSTRUCTIONS

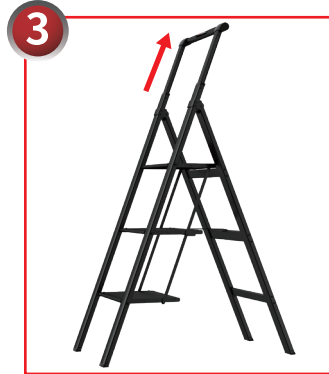
TO OPEN:



Ladder storage status.

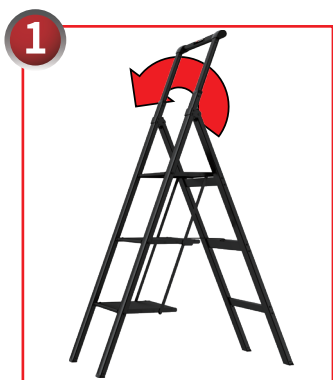


Push down on the top tread until the ladder unfolds, continue to push the tread until the ladder is fully open.



Extend the armrest up to the maximum position.

TO CLOSE:



Slide the armrest down until it is fully stowed.



Push up on the top tread to allow the ladder to retract and continue to push the tread until the ladder is fully retracted.



Storage completed.

WARNING:

Before using the ladder, make sure that the handrail is fully locked and will not slide up and down, otherwise it is easy to be injured!

FOR YOUR SAFETY, READ CAREFULLY!

WARNING: FAILURE TO COMPLY WITH THESE INSTRUCTIONS MAY RESULT IN SERIOUS INJURY.

SPECIAL PRECAUTIONS

1. Read and understand all instructions and warnings before use.
2. Inspect before use. Do not use if damaged. If any parts are missing, do not use.
3. Examine thoroughly to make sure unit is set up properly.
4. Do not use any components not supplied or approved by DATION Co.
5. Keep fingers clear when opening and closing.

SET UP

1. Open the ladder in place, making sure the handrail does not slide up and down. Please read labels and instructions carefully before use.
2. Place the ladder on a solid level ground. Do not use on smooth surfaces.
3. Ensure that the installation and use of the ladder does not violate any federal, state or local regulations.
4. Never place anything under the unit or attach anything to the unit to increase height or adjust uneven surfaces.

USE

1. **DANGER! Metal Conducts Electricity.** Never use near electrical current.
2. Use extra caution near operating machinery.
3. Acids (such as muriatic or hydrochloric) are corrosive to aluminum and can seriously affect strength. Do not expose unit to corrosive substances.
4. Product designed to support the weight of one person and material. Maximum weight not to exceed duty rating (see other labels).

MAINTENANCE

1. Keep the ladder body and foot cover free of debris and paint accumulation. Do not allow tools and materials to accumulate on the ladder.
2. Keep all pivot connections free of foreign objects. Do not abuse by dropping or bumping.
4. Prevent movement and avoid damage during transportation.
5. Regularly lubricate the hinge mechanism.

ACCESS

1. Face the ladder when going up and down the ladder.
2. Don't lean your body too much, keep your body centered between the ladders at all times.