

INSTRUCTION MANUAL

Model: A25



Customer service email: info@i-aplus.com

ATTENTION

Thank you very much for your purchase. When the number of your order is more than 1, we will split your order and ship the goods separately to ensure the safety. We promise to deliver at the same time, but the time of receipt may be slightly different due to logistics. Each tracking number corresponds to only one cargo, you can contact info@i-aplus.com for more logistics information. Thanks again for your understanding.



Scan the code to watch the installation video.

PARTS LIST



01

HARDWARE LIST

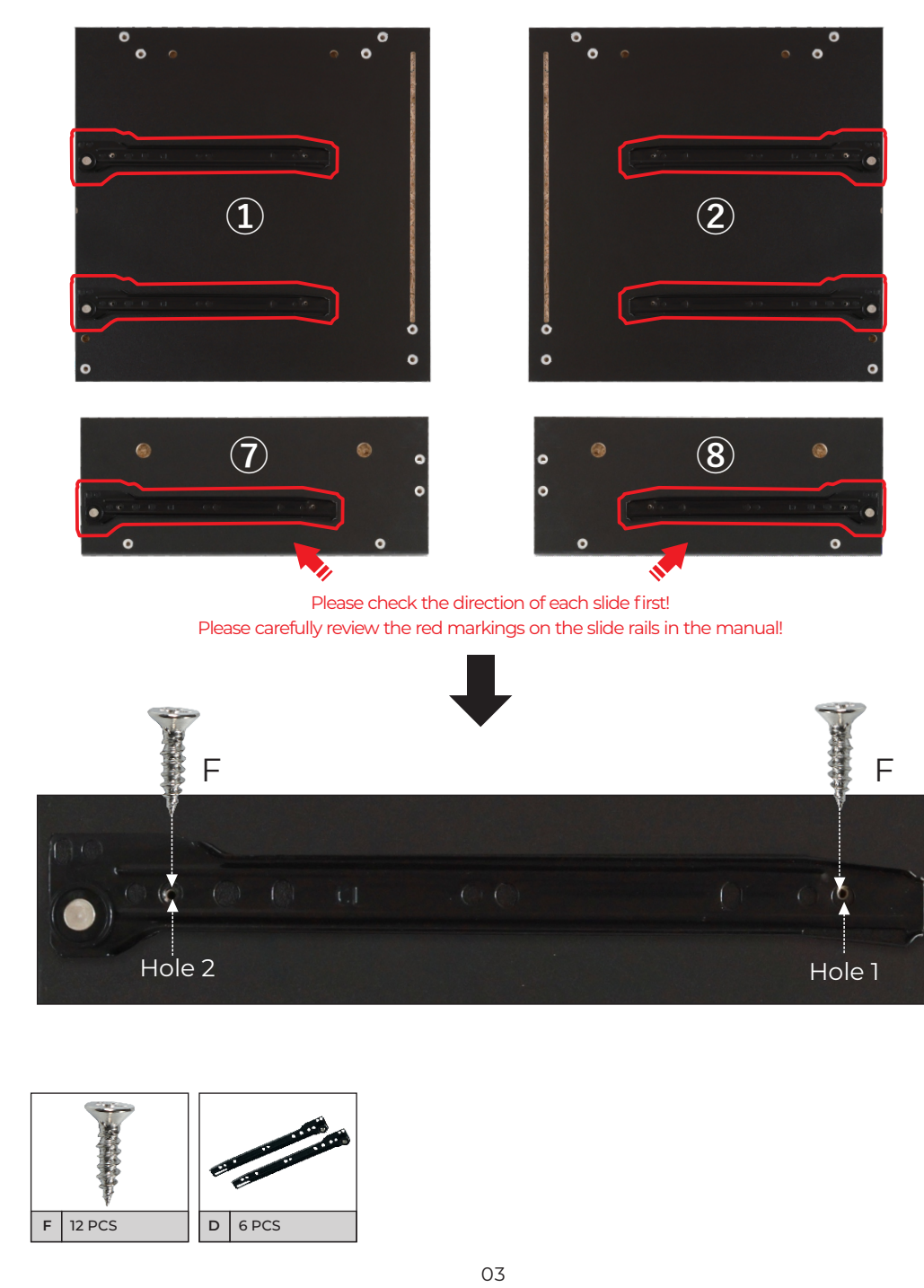


ATTENTION

1. Please place the product on the carpet or carton to assemble to avoid scratching the floor;
2. During the installation process, keep away from children and pets and avoid accidentally swallowing spare parts;
3. It is recommended to use a low-speed electric drill for installation.

02

step 1.



03

step 2.



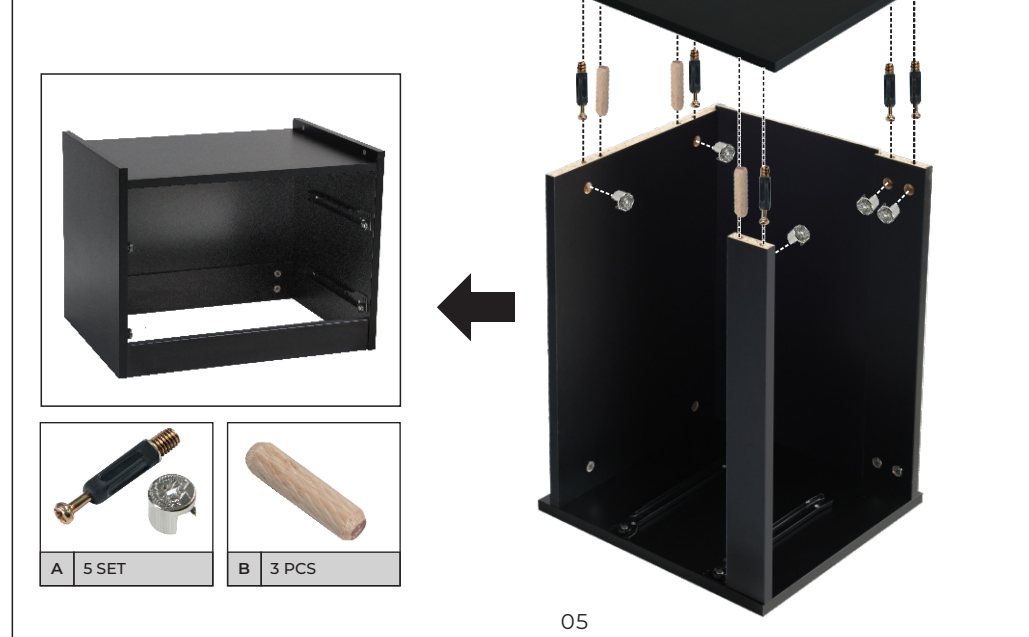
04

step 4.

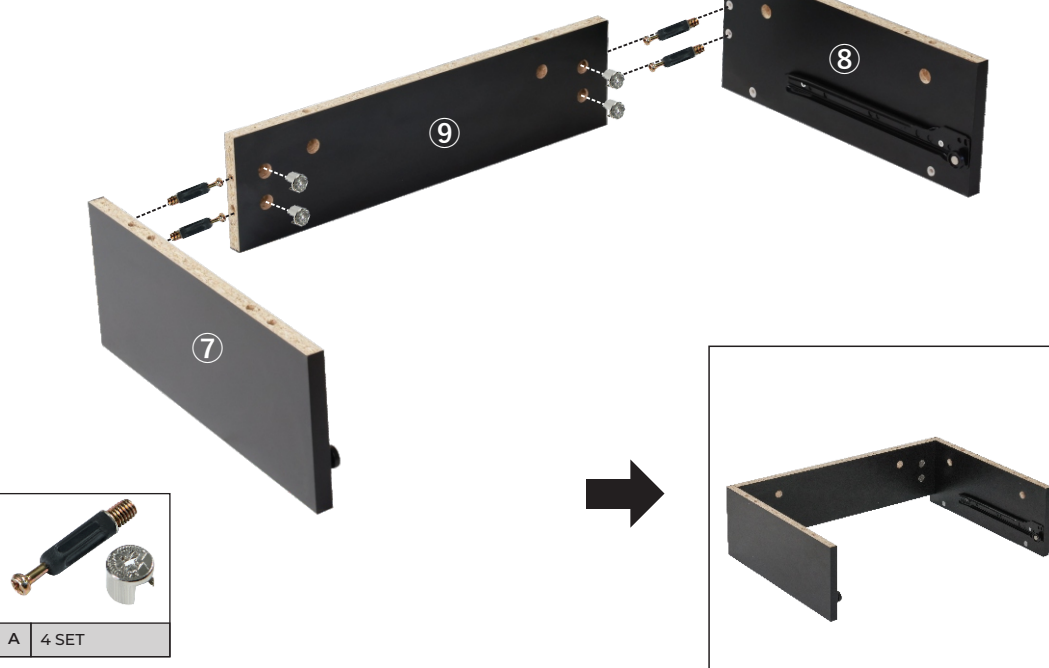


05

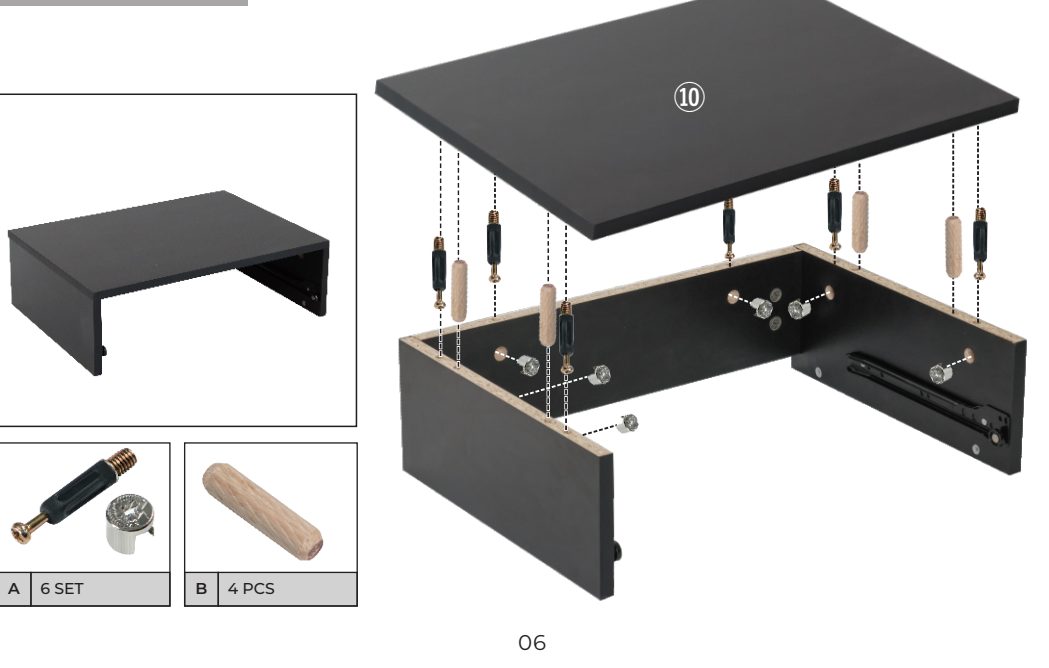
step 5.



step 6.

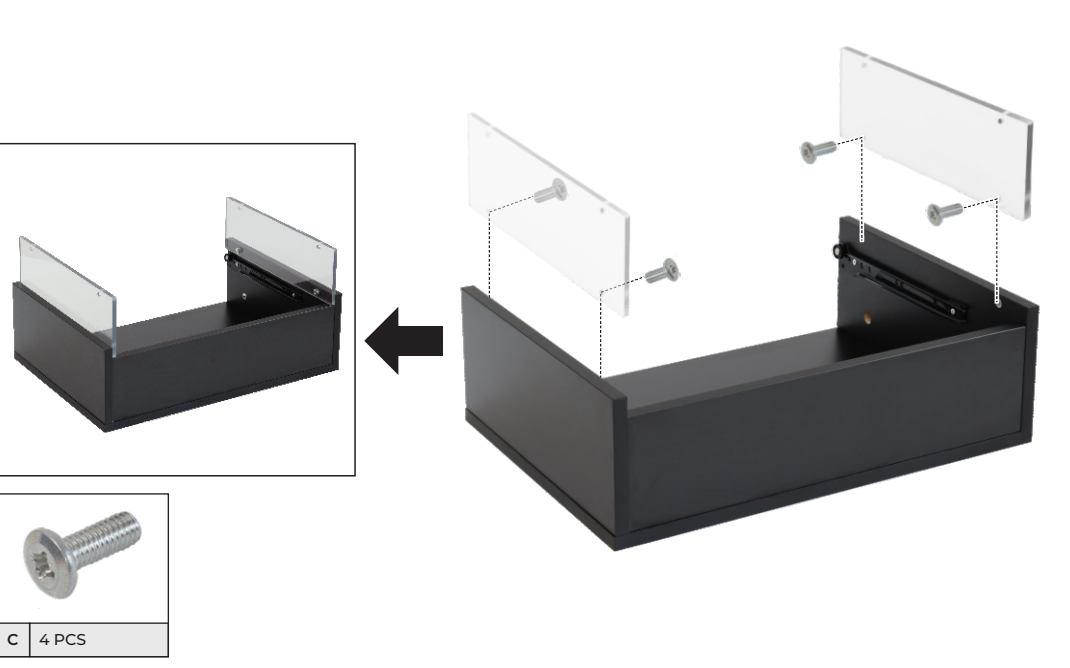


step 7.



06

step 8.



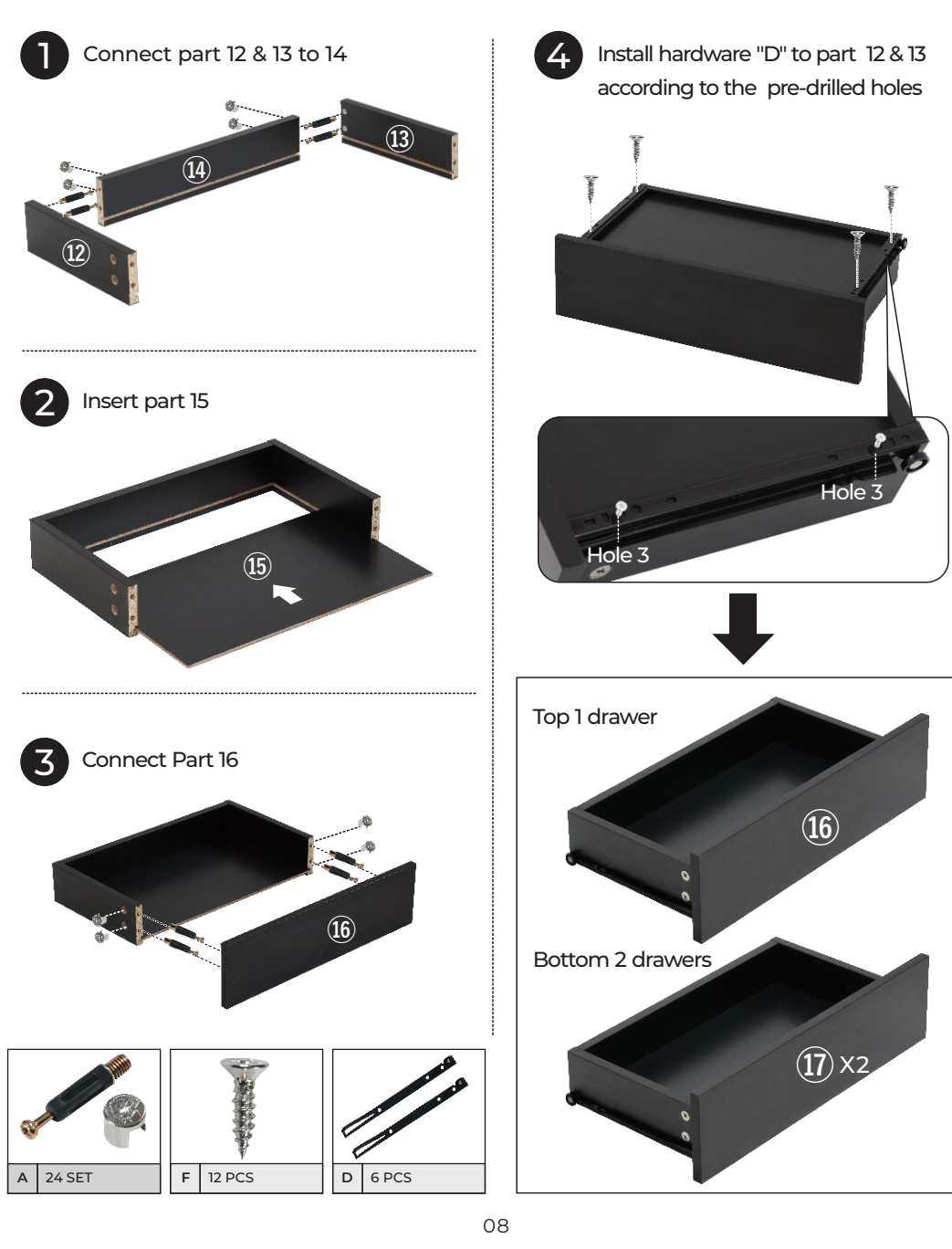
step 9.



07

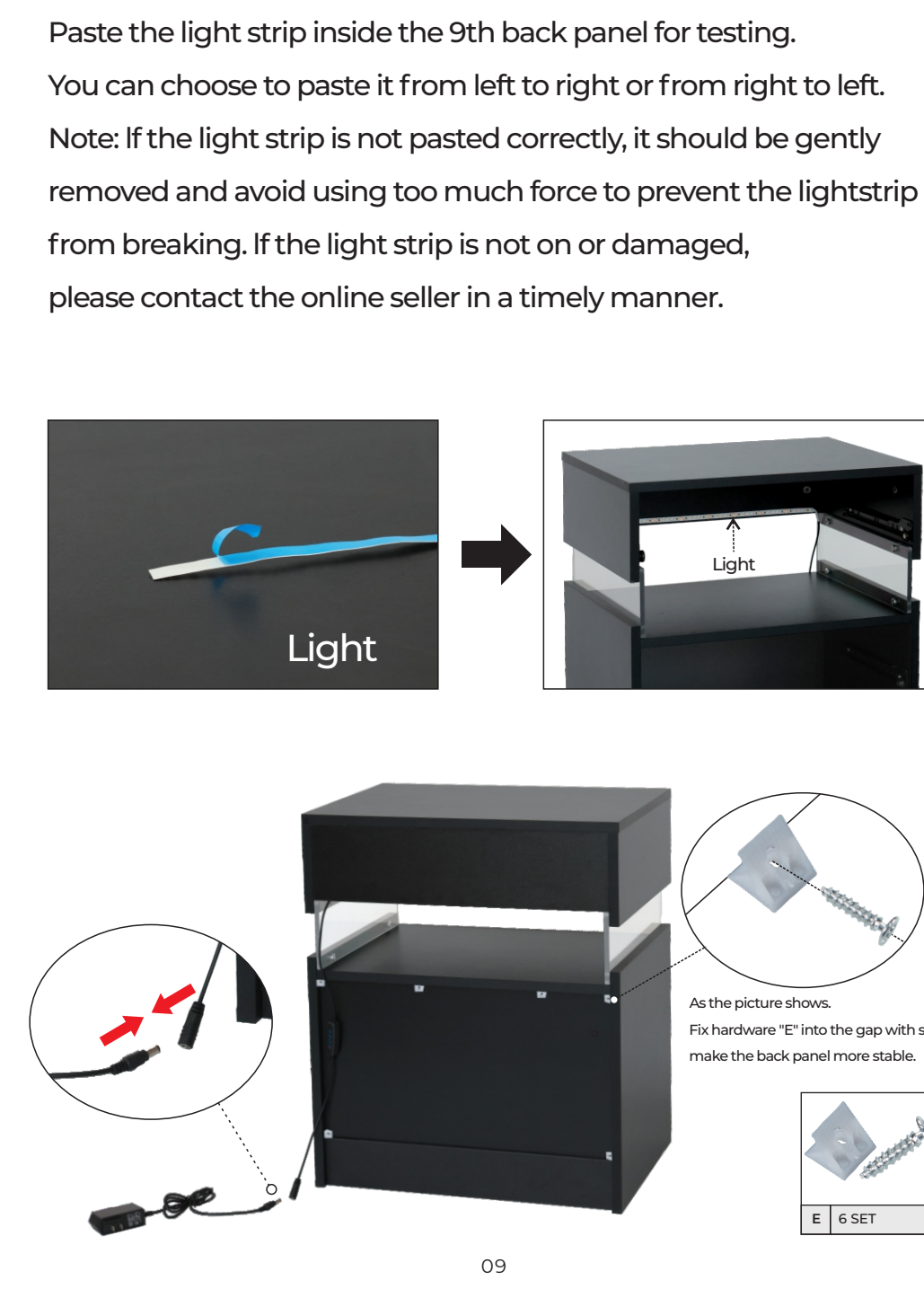
step 10. x3

DRAWER INSTALLATION



08

step 11.



09

step 12.



10



Congratulations on successful installation!!!

THANK YOU VERY MUCH FOR YOUR PURCHASE.
Customer service email: info@i-aplus.com