

Assembly Instructions

Caution : You must read this before you proceed

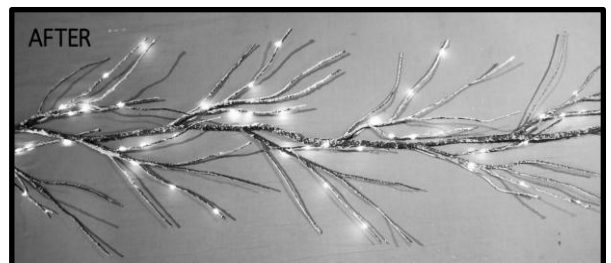
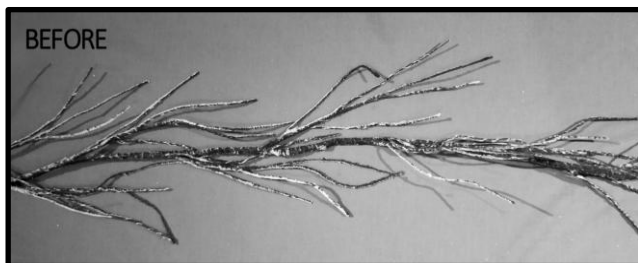
Garland

Note: All products will need some amount of branch shaping before final display. These products include small trees, porch bushes, teardrops, centerpieces and similar items. Garland images are used to illustrate this point.

SHAPING

The product is shipped from the factory with the branch tips compressed against the center. Each branch tip must be shaped to its proper position to give the product a natural look. This will also bring the piece to its advertised dimension. The care and attention given to this final process will result in a genuinely beautiful and appealing holiday decoration. Shaping is done by gently grasping the branch tips and spreading them out away from the center.

Garland



The BEFORE photo shows the product as it appears out of the box. The AFTER photo shows how the product should look after proper shaping.

TIMER OPERATION



The timer is on the adaptor.

- ◆ Plug in the power for the lights to turn on.
- ◆ Press the button one time to start the 6h/18h timer; the button will light up green.
- ◆ Press the button a second time to turn the tree off.
- ◆ Press the button a third time for a continuous on without the timer.

STORAGE

Store product in a cool, dry location, protected from sunlight.

WARNINGS

- For indoor use only.
- Keep product away from water and damp environments.
- Do not mount or place near gas or electric heaters, fireplaces, candles or other similar sources of heat.
- Check the garland, its plug, wiring and components regularly. If any damage is evident to any of the electrical elements, stop using immediately.
- When positioning the branches ensure that the lights on the garland are switched off.
- Before using, make sure that all electrical connections are securely fitted.
- Do not touch the light source during operation!
- If any damage occurs to the electrical component, please stop to use and refer to a qualified electrical professional for advice.
- Unplug the product when leaving the house, when retiring for the night, or when leaving it unattended.
- This garland is only designed to be used with the supplied plug; please do not use any other substitute plug type.
- Maintenance/cleaning of the lights is limited to the surface exterior, using a dry cloth only.
- CAUTION: This is an electrical product-not a toy! To avoid risk of fire, burns, personal injury and electric shock, it should not be played with or placed where small children can reach it.

Care & Maintenance

- Wipe the branches clean with a soft cloth.
- If it is extra dirty or dull, use warm water and a few drops of dishwashing soap in a spray bottle.
- Spray stained areas of the tree and wipe with a soft cloth.
- Pack individual sections of the tree in plastic bags or old bedsheets to protect them from accumulating more dust and dirt in storage.
- Exposure to heat or humidity may cause its material to warp from its original shape.