

Assembly Instructions

Caution : You must read this before you proceed

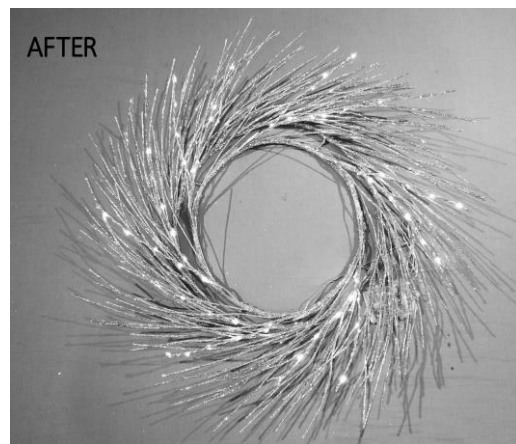
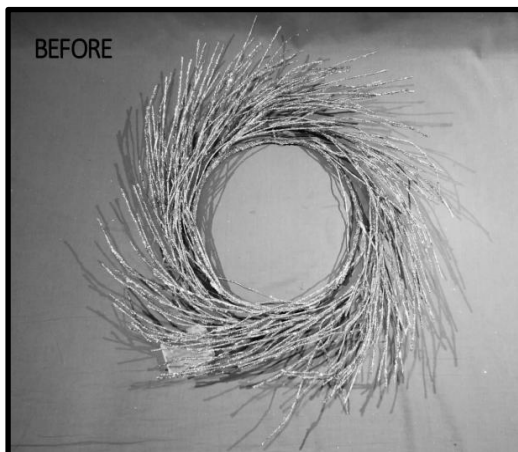
Garland or Wreath

Note: All products will need some amount of branch shaping before final display. These products include small trees, porch bushes, teardrops, centerpieces and similar items. Wreath and Garland images are used to illustrate this point.

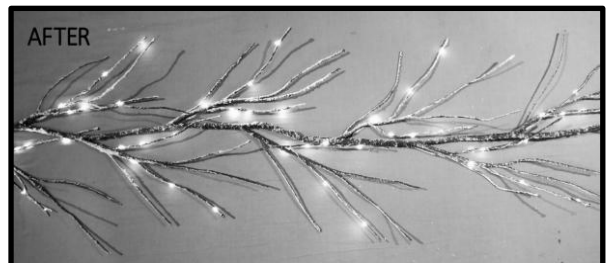
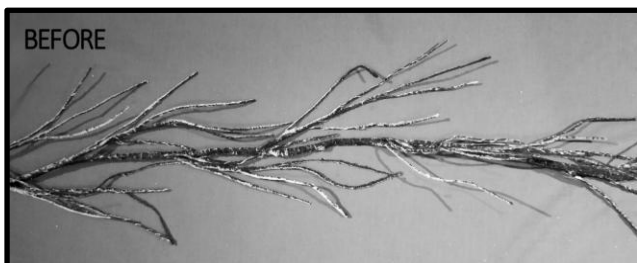
SHAPING

The product is shipped from the factory with the branch tips compressed to the center. Each branch tip must be shaped to its proper position to give the product a natural look. This will also bring the piece to its advertised dimension. The care and attention given to this final process will result in a genuinely beautiful and appealing holiday decoration. Shaping is done by gently grasping the branch tips and spreading them out away from the center.

Wreath



Garland



The BEFORE photo shows the product as it appears out of the box. The AFTER photo shows how the product should look after proper shaping.

BATTERY INSTALLATION

Open battery compartment and insert batteries observing proper polarity (+/-).

OPERATION

Pressing the ON/OFF button once will turn on the lights and begin the timer. The timer will run continually: 6 hours with lights on, then 18 hours with lights off and repeat until deactivated by pressing ON/OFF button.

STORAGE

To avoid leakage and corrosion, remove batteries from battery compartment before storage. Store product in a cool, dry location, protected from sunlight.

WARNINGS

- This product is for seasonal decoration only and not intended for permanent installation or use.
- Do not mix old and new batteries. Replace all batteries at the same time.
- Do not mix alkaline, standard (carbon-zinc), or rechargeable(nickel-cadmium) batteries or equivalent.
- Do not use rechargeable batteries.
- Do not dispose of batteries in fire. Batteries may explode and cause injury.
- Never make wrong polarity connections - make sure batteries are properly installed.
- KEEP BATTERIES OUT OF REACH OF CHILDREN.

CAUTION: changes or modifications not expressly approved by the party responsible for compliance could void the user's authority to operate the equipment.

NOTE: This equipment has been tested and found to comply with the limits for a Class B digital device, pursuant to Part 15 of the FCC Rules. These limits are designed to provide reasonable protection against harmful interference in a residential installation. This equipment generates, uses and can radiate radio frequency energy and, if not installed and used in accordance with the instructions, may cause harmful interference to radio communications. However, there is no guarantee that interference will not occur in a particular installation. If this equipment does cause harmful interference to radio or television reception, which can be determined by turning the equipment off and on, the user is encouraged to try to correct the interference by one or more of the following measures:

- Reorient or relocate the receiving antenna.
- Increase the separation between the equipment and receiver.
- Connect the equipment into an outlet on a circuit different from that to which the receiver is connected.
- Consult the dealer or an experienced radio/TV technician for help.