

CHILDREN'S ELECTRONIC TOY VEHICLE



OWNERS MANUAL

with Assembly Instructions

Read and understand this entire manual before using!

Please keep this manual for future reference as it contains important information. Before first time use, charge the battery for at least 4-6 hours, but no more than 10 hours.

The battery features a thermal fuse with a reset fuse that will automatically trip and cut all power to the vehicle if the motor, electric system or battery is overloaded. The fuse will reset and power will be restored after the unit is turned OFF for 20 seconds and then turned ON again. If the thermal fuse trips repeatedly during normal use, the vehicle may need repair. **Contact your distributor please.**

To avoid losing power, follow these guidelines:

- Do not overload the vehicle.
- Do not tow anything behind the vehicle.
- Do not drive up steep slopes.
- Do not drive into fixed objects, which may cause the wheels to spin, causing the motor to overheat.
- Do not drive in very hot weather, components may overheat.
- Do not allow water or other liquids to come in contact with the battery or other electric components.
- Do not tamper with the electric system. Doing so may create a short, causing the fuse to trip.



RISK OF FIRE. Do not bypass. Replace only with a new fuse.

On the purchase of your new Ride-On.

This ride-on car will provide your child with many miles of riding of enjoyment. To help assure you and your rider a safe ride we ask you to please read this manual carefully, and keep it for future reference.

Follow the recommendations in this manual, they are designed to improve the safety and operation of your ride-on car and its rider.

Specification

Battery	24V7AH*1
Charger input	24V1.0A
Motor	550-12000
Steering motor	390-5000

Suitable age:	3+ Years
Charge time:	8~12 hours
Load capacity:	100 kg
Size of car:v	1235x703x713 mm
Speed:	3-7 km/h

PART NO.	PART NAME	Q'ty (pcs)	REMARKS
		4WD	
1	Vehicle body	1	
2	Gear box	4	
3	Driving wheel	4	
4	Normal wheel	\	
5	Ø12 washer	\	
6	Bushing	4	only for Plastic wheel use
7	Ø12 washer	4	
8	Lock nut	4	
9	Wheel cover	4	
10	Front axle	1	
11	Rear axle	1	
12	Chimney	1	
13	Ø4x16 screw	17	
14	Front bumper support	2	Left and right
15	Front bumper linkage	1	
16	View mirror	2	Left and right
17	Windshield	1	
18	Steering wheel	1	
19	Seat board	1	
20	Seat	1	
21	Seat back	1	
22	Light bar linkage	1	
23	Light bar support	2	Left and right
24	Spanner	2	
25	Charger	1	
26	Remote controller	1	
27			
28			
29			
30			

Assembly tools required (not included):


Screwdriver

- It is parents' responsibility to check main parts of the toy before using, must regularly examine for potential hazard, such as the battery, charge, cable or cord, plug, screws are fastening enclosure of other parts and that in the event of such damage, the toy must not be used until that damage had been properly removed.
- Make sure the plastic parts of the vehicle are not cracked or broken.
- Occasionally use a lightweight oil to lubricate moving parts such as wheels.
- Park the vehicle indoors or cover it with a tarp to protect it from wet weather.
- Keep the vehicle away from sources of heat, such as stoves and heaters. Plastic parts may melt.
- Recharge the battery after each use. Only an adult can handle the battery. Recharge the battery at least once a month when the vehicle Raider is not being used.
- Do not wash the vehicle with a hose. Do not wash the vehicle with soap and water. Do not drive the vehicle in rainy or snowy weather. Water will damage the motor, electric system and battery.
- Clean the vehicle with a soft, dry cloth. To restore shine to plastic parts, use a non-wax furniture polish. Do not use car wax. Do not use abrasive cleaners.
- Do not drive the vehicle in loose dirt, sand or fine gravel which could damage the moving parts, motors or the electric system.
- When not using, all the electrical source should be turn off. Turn off the power switch and disconnect the battery connection.

Battery Disposal


The battery will eventually lose the ability to hold a charge. Depending on the amount of use, and varying conditions, the battery should operate for one to three years.

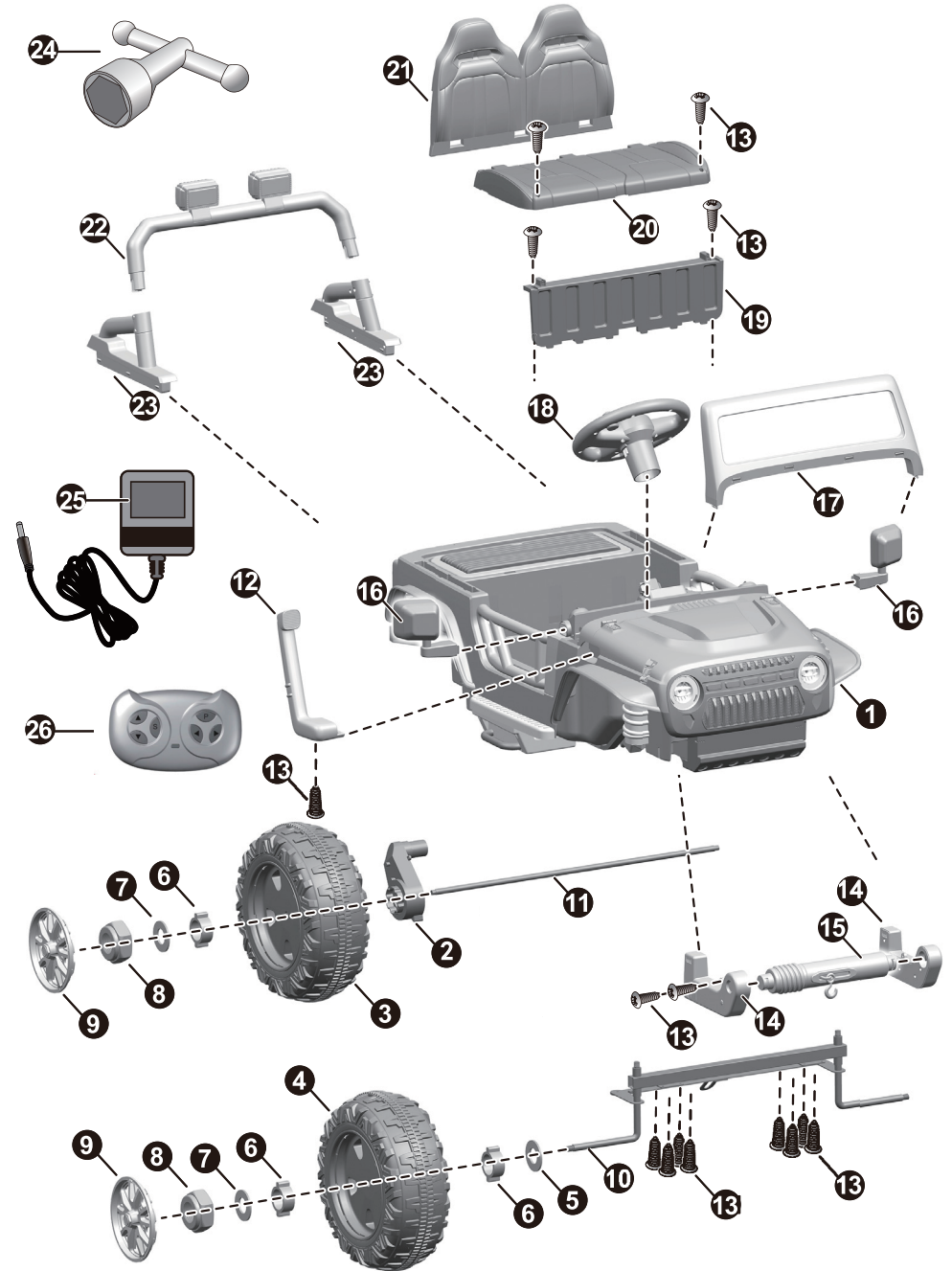
Important! Recycle the dead battery responsibly. The battery contains lead acid (electrolyte) and must be disposed of properly and legally. It is illegal in most areas to incinerate lead acid batteries or dispose of them in landfills. Take it to a federal or state-approved lead acid battery recycler, such as local automotive battery retailer.

Do not throw the battery away with your regular household waste!

Problem	Possible Cause	Solution
Vehicle does not run	Battery low on power	Recharge battery.
	Thermal fuse has tripped	Reset fuse, see <Fuse>
	Battery connector or wires are loose	Check that the battery connectors are firmly plugged into each other. If wires are loose around the motor contact your distributor please.
	Battery is dead	Replace battery, contact your distributor please.
	Electrical system is damaged	Contact your distributor please.
	Motor is damaged	Contact your distributor please.
Vehicle does not run very long	Battery is under charged	Check that the battery connectors are firmly plugged into each other when recharging
	Battery is old	Replace battery, contact your distributor please.
Vehicle runs sluggishly	Battery low on power	Recharge battery, contact your distributor please.
	Battery is old	Replace battery, contact your distributor please.
	Vehicle is overload	Reduce weight on vehicle.
	Vehicle is being used in harsh conditions	Avoid using vehicle in harsh conditions ,see <Safety>.
Vehicle needs a push to go forward	Poor contact of wires or Connectors	Check that the battery connectors are firmly plugged into each other. If wires are loose around the motor, contact your distributor please.
	"Dead Spot" on motor	A dead spot means the electric power is not being delivered to the terminal connection and the vehicle needs repair. Contact your distributor please.
Difficult shifting from forward to reverse or vice-versa	Attempting to shift while the vehicle is motion	Completely stop the vehicle and shift, see <Use Your New Vehicle>
Loud grinding or clicking noises coming from motor or gear box	Motor or gears are damaged	Contact your distributor please.
Battery will not recharge	Battery connector or adapter connector is loose	Check that the battery connectors are firmly plugged into each other.
	Charger not plugged in	Check that the battery charger is plugged into a working wall outlet.
	Charger is not working	Contact your distributor please.
Charger feels warm when recharging	This is normal and not a cause for concern	

Completely read through this manual and the troubleshooting guide table before calling. If you still need help resolving the problem **Contact your distributor please.**

HINT: Some parts shown are assembled on both sides of vehicle



⚠ WARNING!

- **CHOKING HAZARD** - Small parts. Not suitable for children under 36 months. The product contains small parts, keep children away when assembling.
- **ADULT ASSEMBLY REQUIRED.**
- Always remove protective material and poly bags and dispose before assembly.
- Protective equipment should be worn. Always wear shoes and sit in the seat when operating the vehicle.
- Only drive on level ground. Never use on the lawn.
- Never leave a child unattended.
- Keep your hands, hair, and clothes away from moving parts.

⚠ SAFETY

The following safety hazards may result in serious injury or death:

- Never leave child unattended. Direct adult supervision is required. Always keep child in view when child is in vehicle.
- To reduce the risk of injury, adult supervision is required. Never use in roadways, near motor vehicles, on or near steep inclines or steps, swimming pools or other bodies of water, always wear shoes, and never allow more than 2 rider.
- Never use in unsafe conditions such as snow, rain, loose dirt, mud, sand, or gravel, otherwise may result in an unexpected accident such as tipping over, and could damage the electrical system or battery
- Not to be used in traffic.
- This toy should be used with caution since skill is required to avoid falls or collisions causing injury to the user or third parties.
- This toy is unsuitable for children under 36 months due to its maximum speed; Maximum user weight is 100kg.
- This toy has no brake.

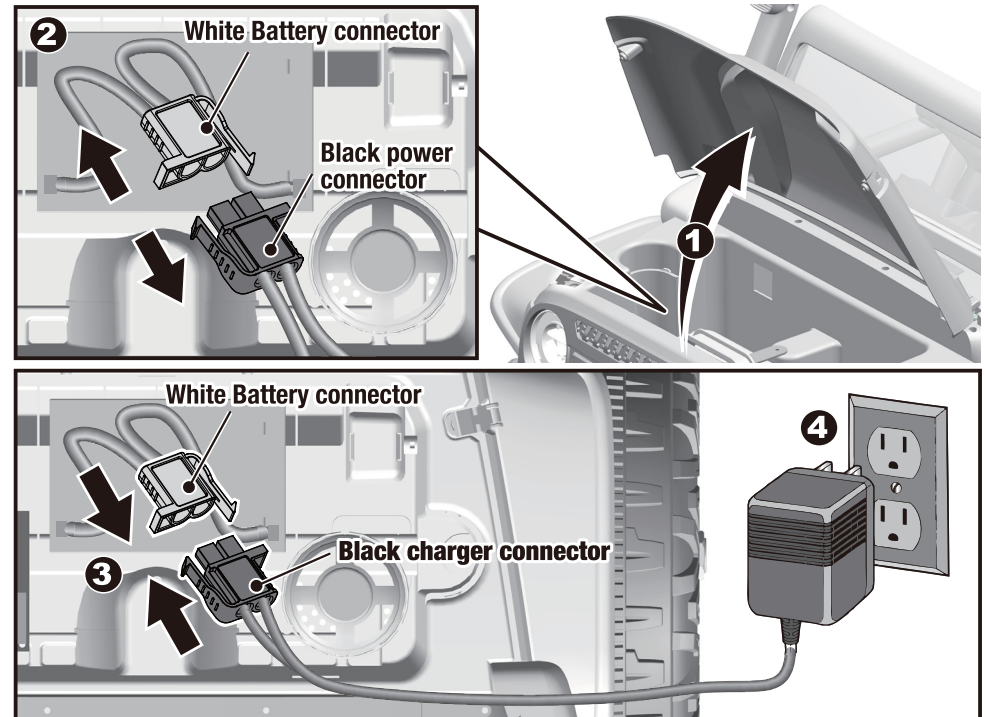
⚠ BATTERY INFORMATION

- Non-rechargeable batteries are not to be recharged.
- Rechargeable batteries are to be removed from the toy before being charged.
- Rechargeable batteries are only to be charged under adult supervision.
- Different types of batteries or new and used batteries are not to be mixed.
- Batteries are to be inserted with the correct polarity.
- Exhausted batteries are to be removed from the toy.
- The supply terminals are not to be short-circuited.

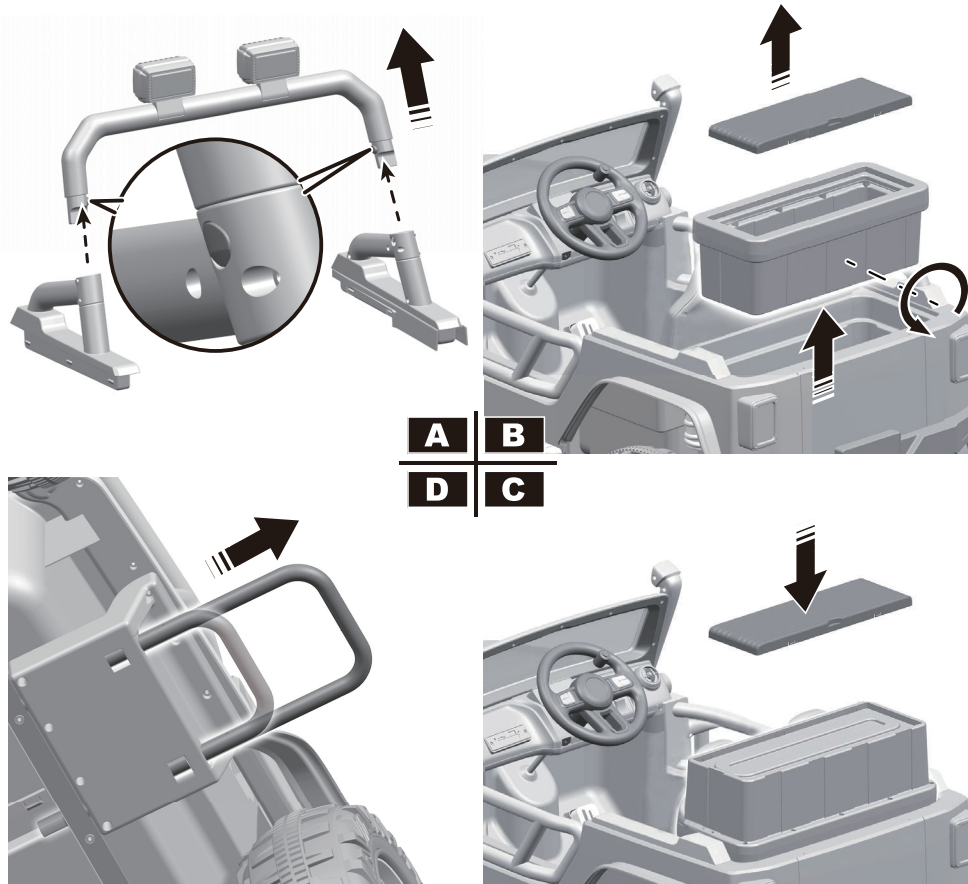
⚠ WARNING!

- **ONLY an adult is allowed charge and recharge the battery!**
- **This product with Charging Protection: when charging, all functions will be cut off.**

- Turn off the product when charging.
- Before the first use, you should charge the battery for 4-6 hours. Do not recharge the battery for more than 10 hours to avoid overheating the charger.
- When the vehicle begins to run slowly, recharge the battery.
- After each use or once a month minimum recharge time as 8 to 12 hours, less than 20 hours at most.
- Use the only rechargeable battery and charger supplied with your vehicle. NEVER substitute the battery or the charger with another brand. Using another battery or charger may cause a fire or explosion.
- Do not use the battery or charger for any other product.



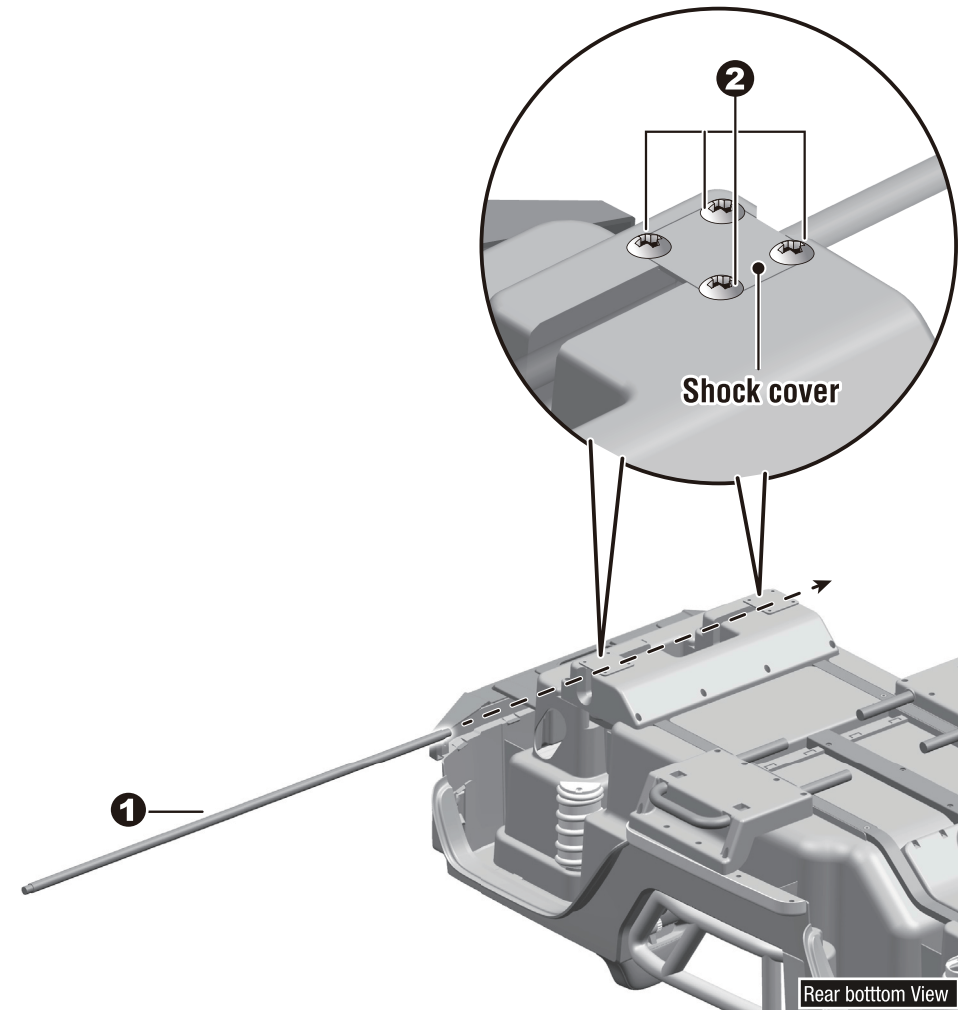
1. Loosen the hood hooks on both sides of the hood, and open the hood.
2. Unplug the White Battery connector and the Black power connector.
3. Plug the Black charger connector into the White battery connector.
4. Plug the charger plug into a wall outlet. The battery will begin charging.



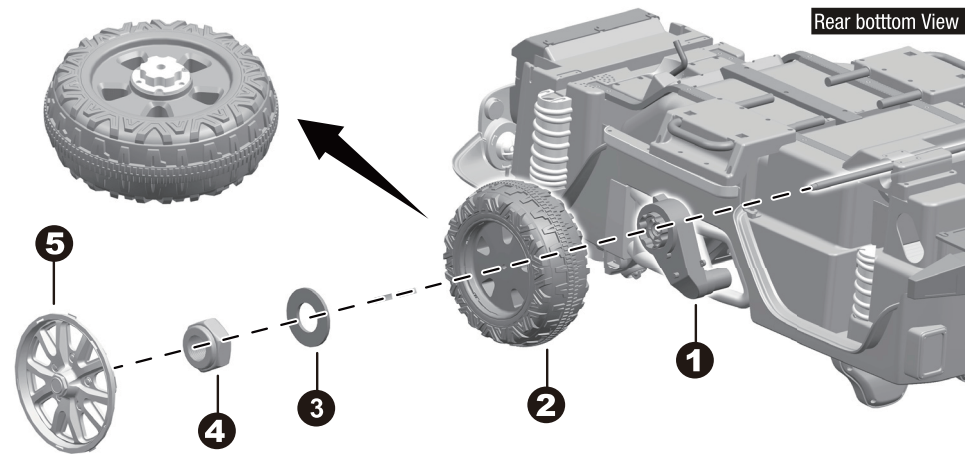
A **B**
D **C**



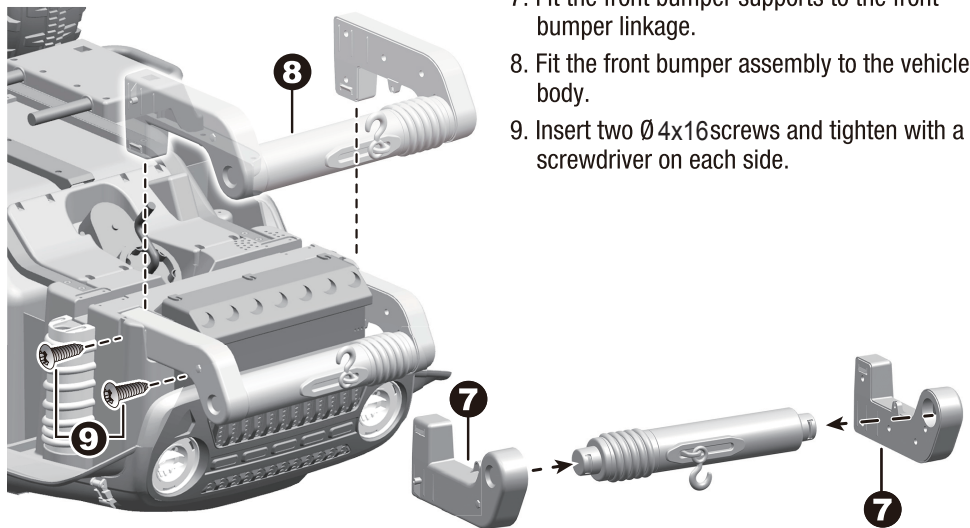
- A.** Press the locks inside the light bar linkage still remove the light bar linkage.
- B.** Remove the rear trunk cover and the rear trunk box.
- C.** Turn over the trunk box, replace the rear trunk box and cover.
- D.** Pull out the adult foot pedals on both side of the product.
- E.** In adult mode, use the throttle button on the steering wheel to control (move/stop) the product.



- Turn the vehicle body upside down. Remove the washers and locknuts from the rear axle.
- 1-2. Insert the rear axle through into the holes in the vehicle body. If the rear axle cannot be inserted, please loosen the screws on the both shock covers and retry. And re-tighten the screws on the both shock covers after inserting the rear axle.

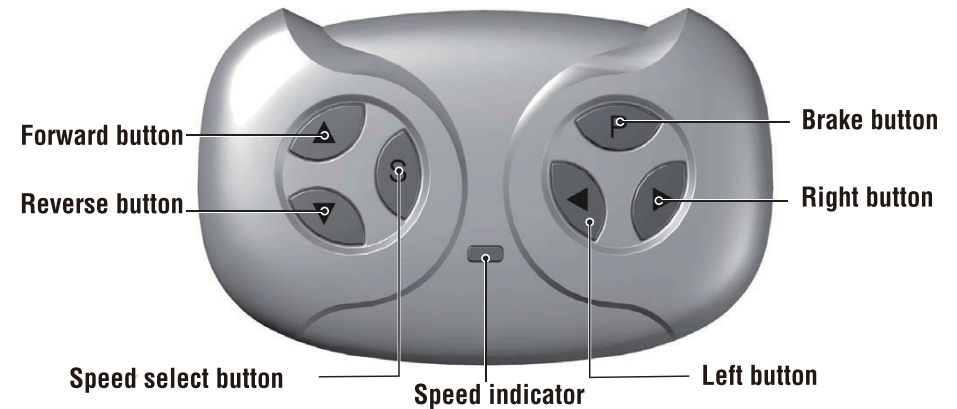


1. Slide a gear box onto the rear axle ("R" labeled gear box should be fit to the "R" side of vehicle body; "L" labeled gear box should be fit to "L" side of vehicle body), and keep the motor and the connector on the gear box pass through the larger hole on the vehicle body.
2. Slide the rear wheel onto the rear axle. And keep the rear wheel match up with the gear box.
3. Slide the $\varnothing 10$ washer onto the rear axle.
4. Tighten a lock nut to the end of the rear axle with a spanner.
Repeat for the other rear wheel.
5. Fit the wheel covers to the rear wheels.



7. Fit the front bumper supports to the front bumper linkage.
8. Fit the front bumper assembly to the vehicle body.
9. Insert two $\varnothing 4 \times 16$ screws and tighten with a screwdriver on each side.

WARNING: The remote control is only allowed to be operated by adults.



Attach the batteries of controller

Lift the battery compartment door on the back of the controller and insert two AAA(LR03) batteries.

HINT: Batteries not included. Refer to the Battery Information on the page 4.

1. Build connection

Long press the forward and reverse buttons for 3 seconds, and the speed indicator flashes. Then power on the vehicle, the speed indicator goes to long bright, means the connection successful. If the speed indicator no response, means the connection failed. Replace the batteries and retry.

2. Brake button

Press the button to stop the vehicle, press it again to release the brake.

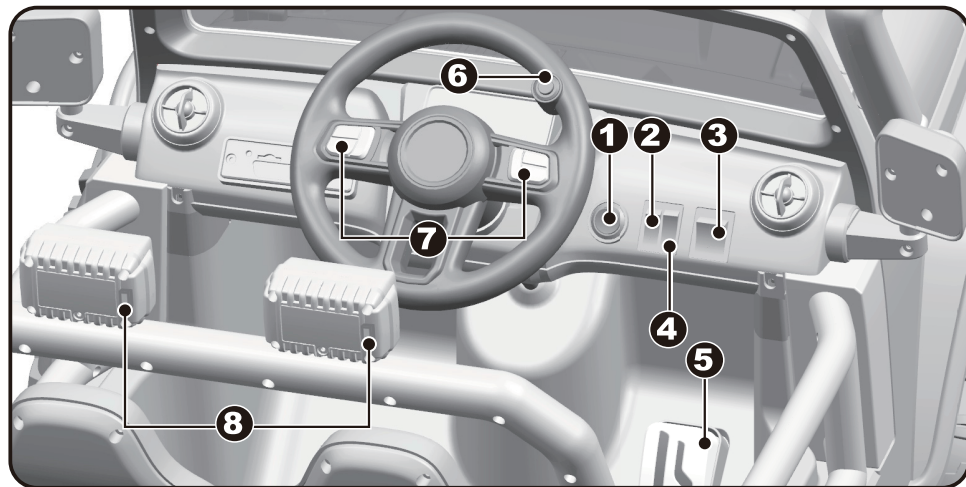
3. Speed select button

The switch operates the vehicle to move in low, normal or high speed.

HINT: This switch won't work while your vehicle moves reverse.

NOTE:

- Leave the remote controller idling for about 10 seconds, it will shut down automatically.
- Rebuild connection when you replace the batteries of the remote controller.



1. **Key switch:** Turns the product on and off.
2. **Parentkid switch:**
 - Switch to upper position, only allow the **throttle pedal** to control the movement of the product. The **throttle button** will not work.
 - Switch to lower position, only allow the throttle button to control the movement of the product. The **throttle pedal** will not work.
- HINT: The throttle button is only allowed to be operated by an adult.**
3. **Forward/reverse switch:** Changes the direction that vehicle moves from forward to reverse.
 - To move the vehicle forward, shift the lever to top position.
 - To move the vehicle backward, shift the lever to down position.
4. **High/Low speed switch:** Operates the product to move forward in high or low speed.

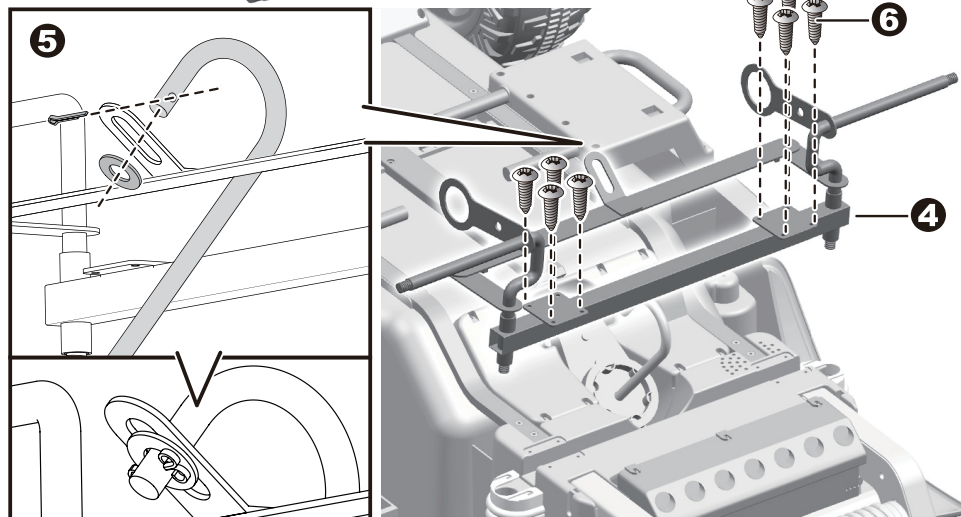
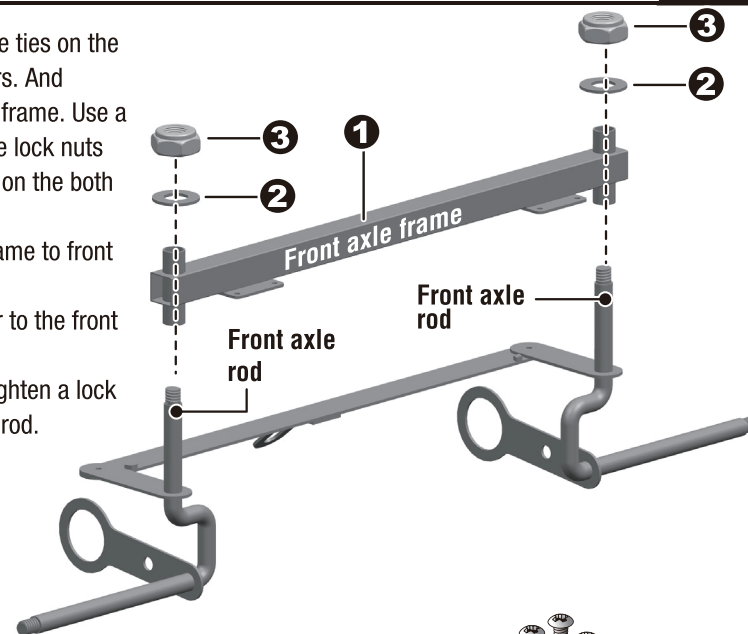
HINT: The product is designed to operate in low speed only in reverse.
5. **Throttle pedal:** Applies power (speed) to the product.
 - To move the product, press the pedal down.
 - To brake or slow down, release pressure from the pedal.
6. **Throttle button:** Applies power(speed) to the product.
 - To move the product, press the button down.
 - To brake or slow down, release pressure from the button.
7. **Sound buttons:** Press for sound or horn playing.
8. **Searching light buttons:** Turn the searching lights on and off.

⚠ IMPORTANT

- **Always stop vehicle when changing the speed or direction to avoid damage the gears and motor.**
- **HIGH SPEED: Make sure your child knows how to steer, how to start and stop the product and knows the rules for safe driving.**

- Cut off the two cable ties on the front axle with scissors. And remove the front axle frame. Use a spanner to remove the lock nuts and the $\varnothing 10$ washers on the both front axle rods

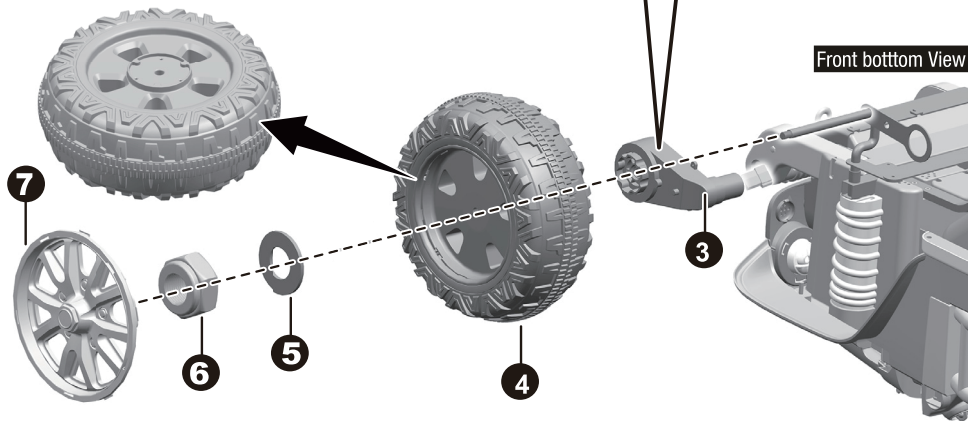
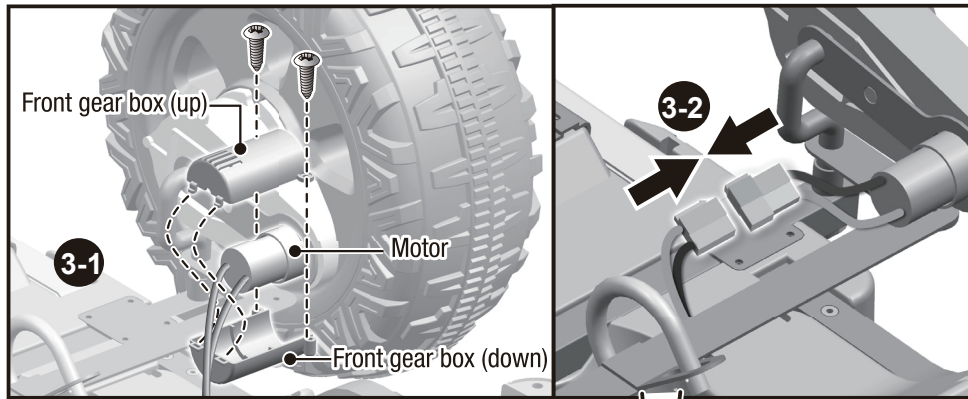
1. Fit the front axle frame to front axle rod.
2. Fit two $\varnothing 10$ washer to the front axle rod.
3. Use a spanner to tighten a lock nut to each front axle rod.



4. Fit the front axle to the vehicle body.
5. Ensure that the bent end of the steering column passes through the hole on the front axle linkage. Slide a washer onto the steering column, insert a split pin into the hole in the steering column, bend the ends of split pins back using a long nose pliers (not included).
6. Insert eight $\varnothing 4 \times 16$ screws and tighten.

Attach the Front Wheels

8



3. Fit the front axle to the vehicle body.

Slide a gear box onto the front axle ("R" labeled gear box should be fit to the "R" side of vehicle body; "L" labeled gear box should be fit to "L" side of vehicle body),

3-1 Fit the front motor hood(up) and front motor hood (down)to the motor on the gear box,tighten it with two screws.

3-2.Plug the connector on the gear box into the connector on the vehicle body.

4.Slide the front wheel onto the front axle. And keep the front wheel match up with the gear box.

5. Slide the Ø10 washer onto the front axle.

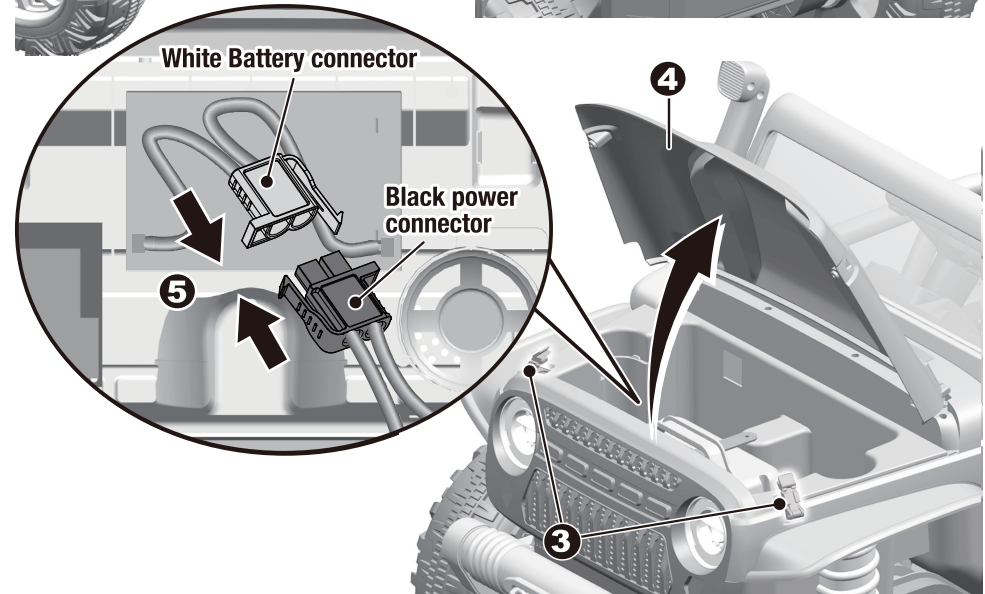
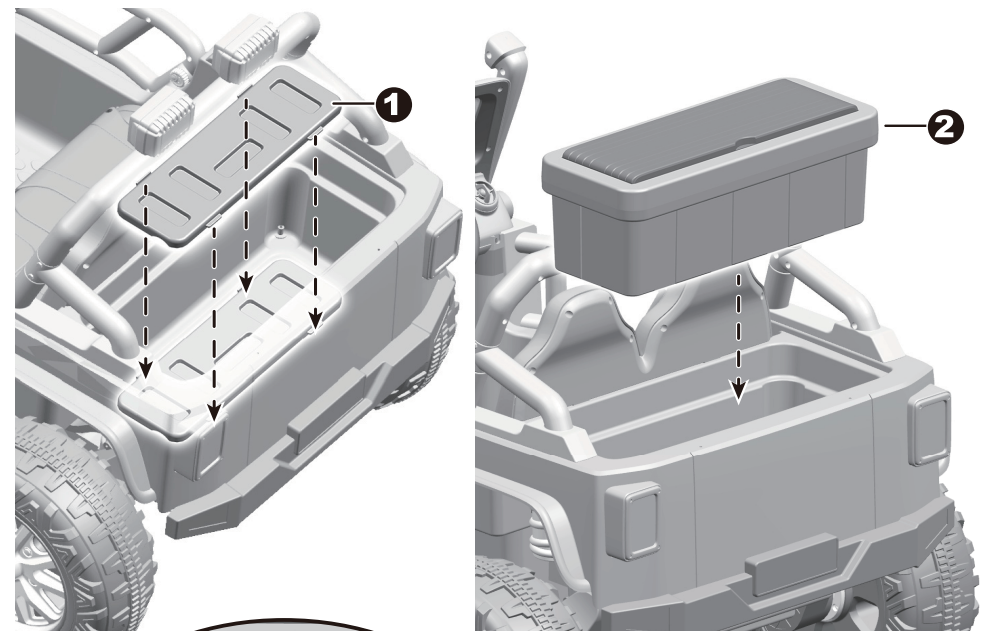
6. Tighten a lock nut to the end of the front axle with a spanner.

7. Fit the wheel cover to the front wheel.

Repeat the procedure 4-10 to assemble the other front wheel.

Attach the Rear Trunk Plate & Connect the Power Supply

13



1. "Snap" the rear trunk plate into the slots in the rear trunk.

2. Replace the rear trunk box.

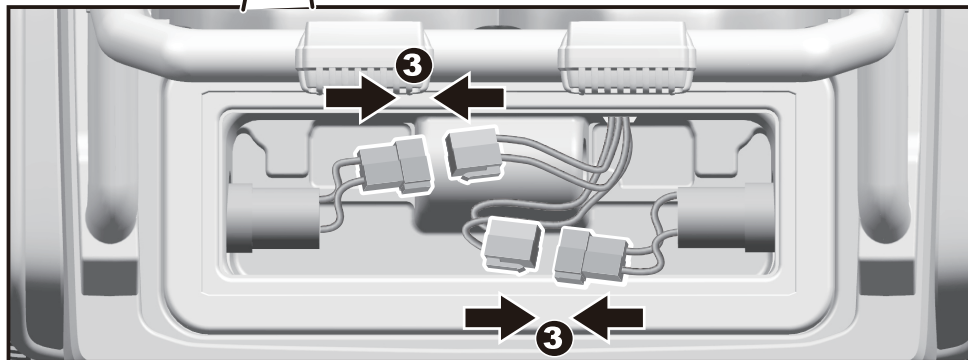
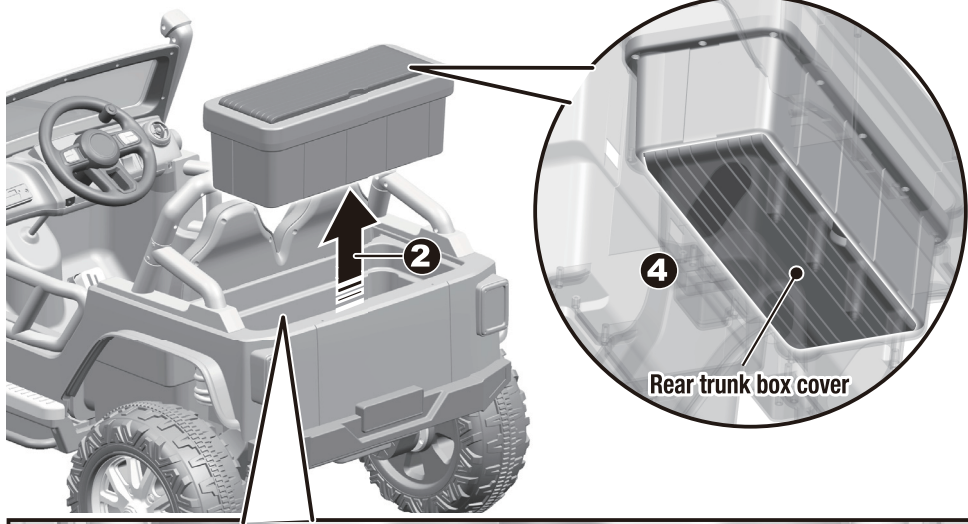
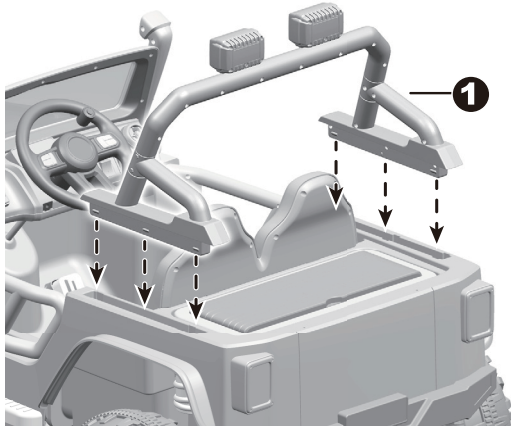
3-4. Loosen the hood hooks on both sides of the hood. And open the hood.

5. Plug the Black power connector on the body into the white battery connector as shown above.

Connect the Rear Gear Boxes

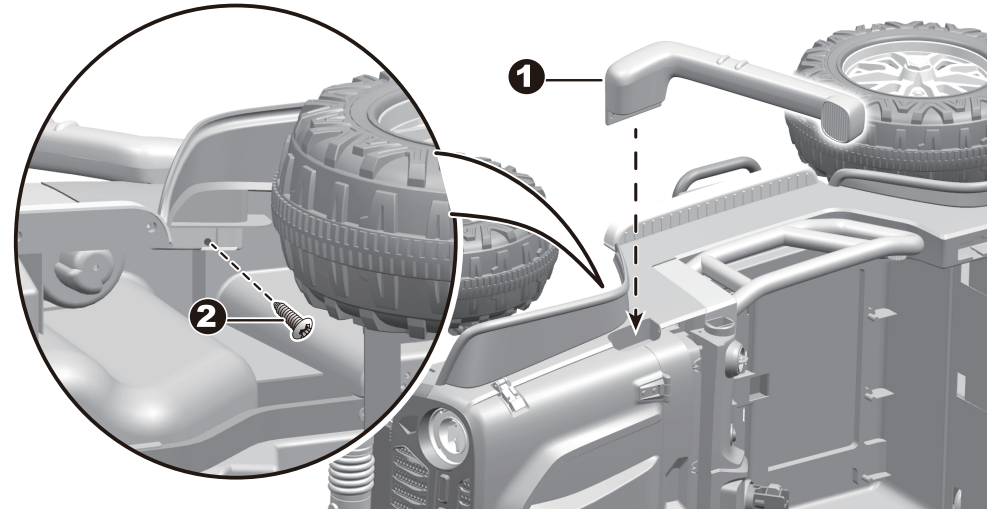
12

1. Fit the light bar assembly to the vehicle body. Push until you hear it “click” into place.
2. Remove the rear trunk box from the vehicle body.
3. Plug the two connectors from the motors into the connectors from the vehicle body.
4. TIP: The rear trunk box cover can also be placed under the rear trunk box.



Attach the Chimney & Steering Wheel

9

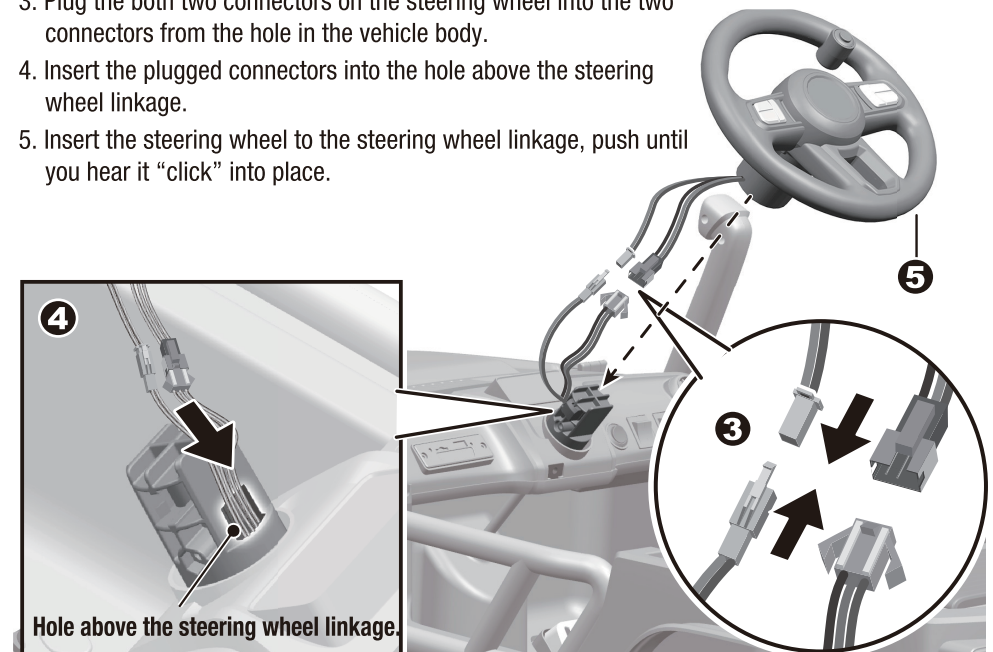


Turn the vehicle body right side up.

1. Fit the chimney to the hole on the right side of the vehicle body.
2. Insert a $\varnothing 4 \times 16$ screw through the vehicle body and into the chimney, and tighten with a screwdriver.

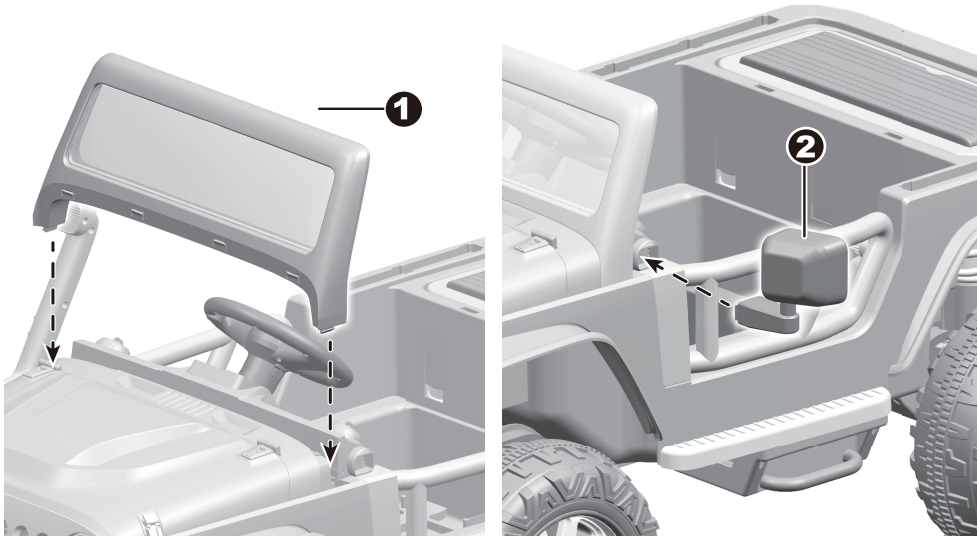
Turn the vehicle body upright.

3. Plug the both two connectors on the steering wheel into the two connectors from the hole in the vehicle body.
4. Insert the plugged connectors into the hole above the steering wheel linkage.
5. Insert the steering wheel to the steering wheel linkage, push until you hear it “click” into place.



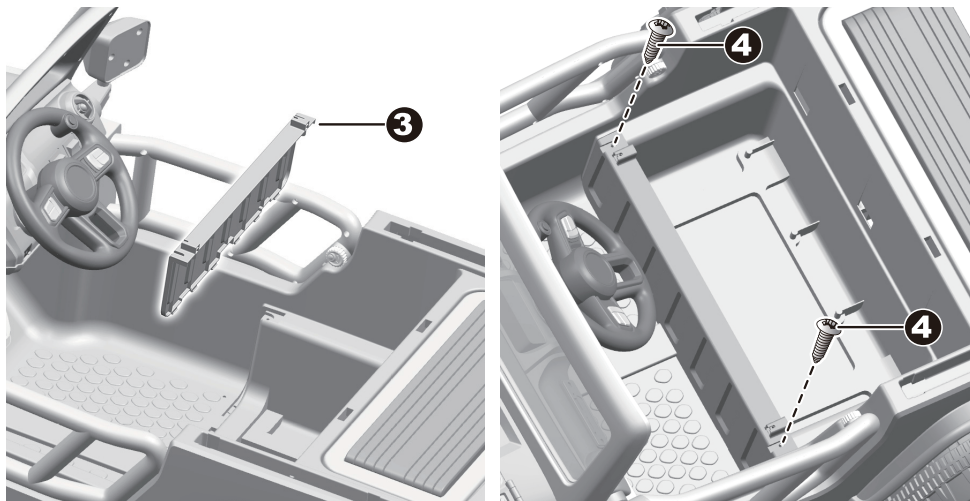
Attach the Windshield, Mirrors & Seat Board

10



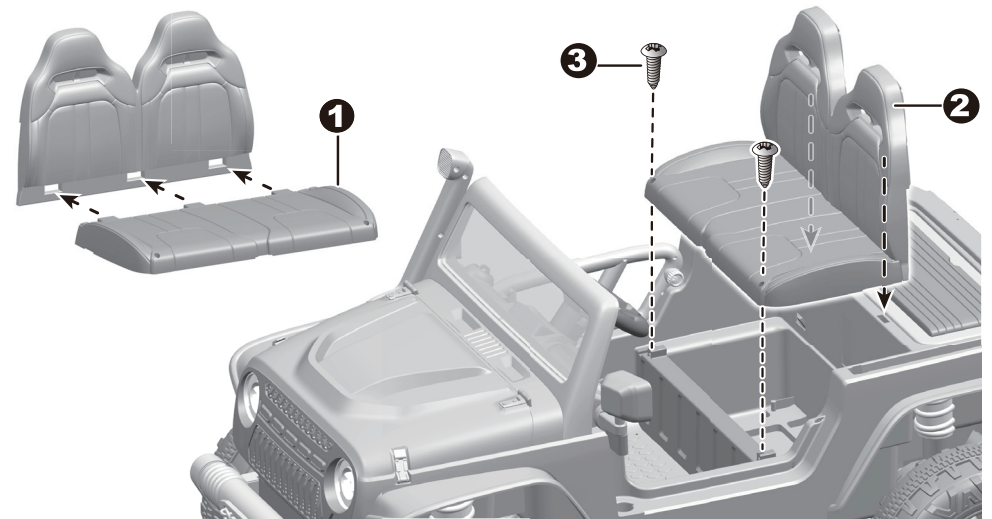
Turn the vehicle body right side up.

1. Insert the the tabs on the windshield into the holes in the vehicle body, push until you hear it “click” into place.
2. Insert mirror to the hole on the side of the vehicle body, push until you hear it “click” into place. Repeat for the other mirror.
3. Fit the seat board to the vehicle body.
4. Insert two Ø4x16 screws and tighten.



Attach the Seat & Light Bar

11



1. Fit the seat to the seat back.
2. Fit the tabs on the seat back into holes in the vehicle body.
3. Insert two Ø4x16 screws through the seat and into the holes on top of the seat board. Tighten them with a screwdriver.
4. Use a screwdriver to unscrew the screws on the back of the light bar linkage
5. Insert 2x1.5 AA batteries (**Not Included**) in their correct polarities. **refer to the battery information on page 4.** And replace the battery cover.
6. Fit the light bar supports the light bar linkage.

