

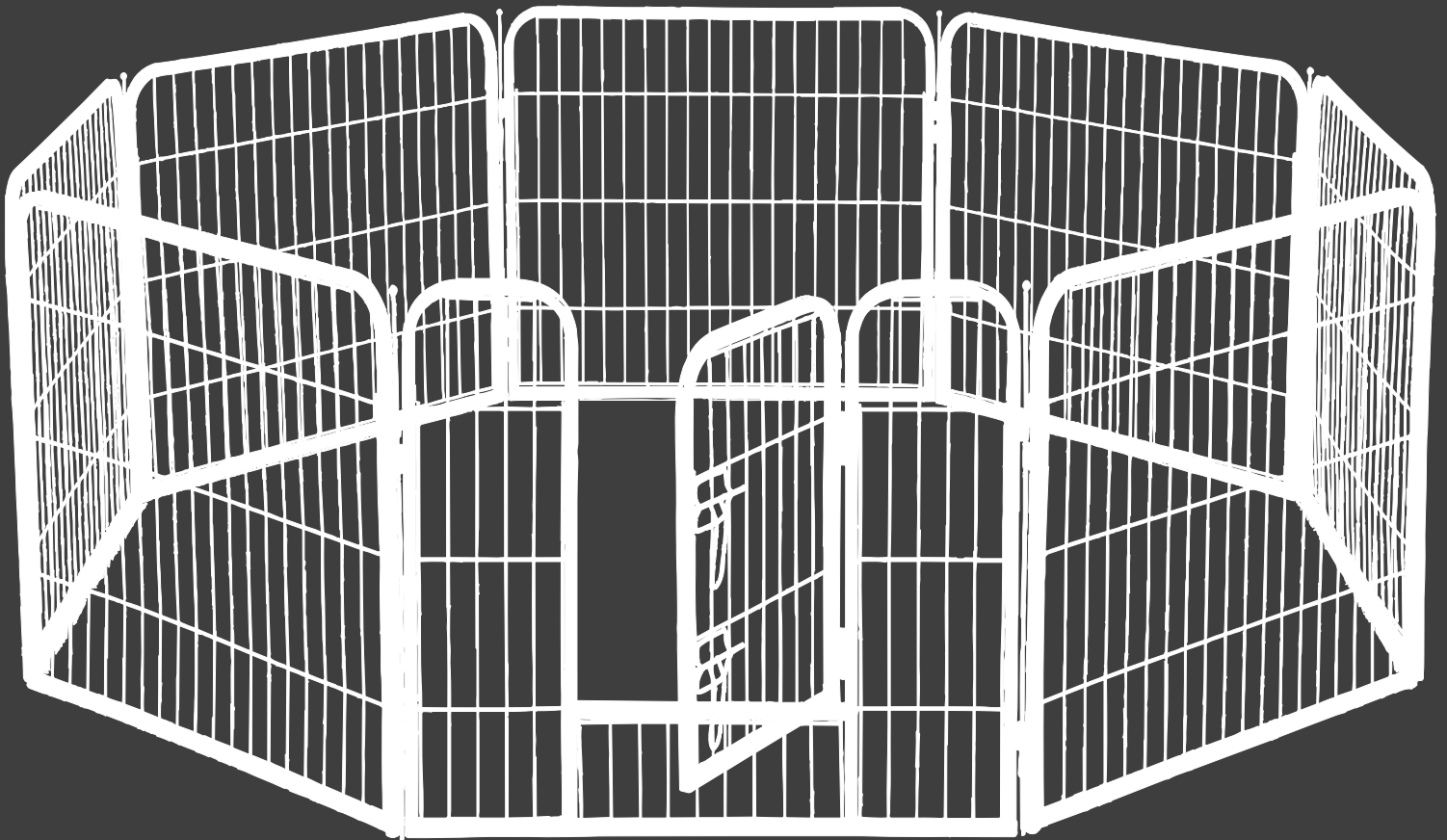
# Dog Fence

## Instruction Manual

DOGF-8S01-24S

DOGF-8S01-32S

DOGF-8S01-40S

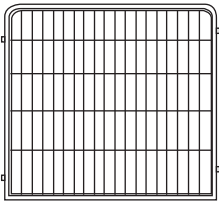
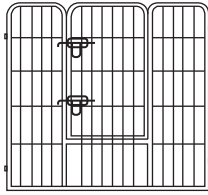
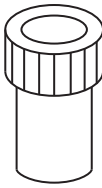



 EST 9:00AM--17:00PM

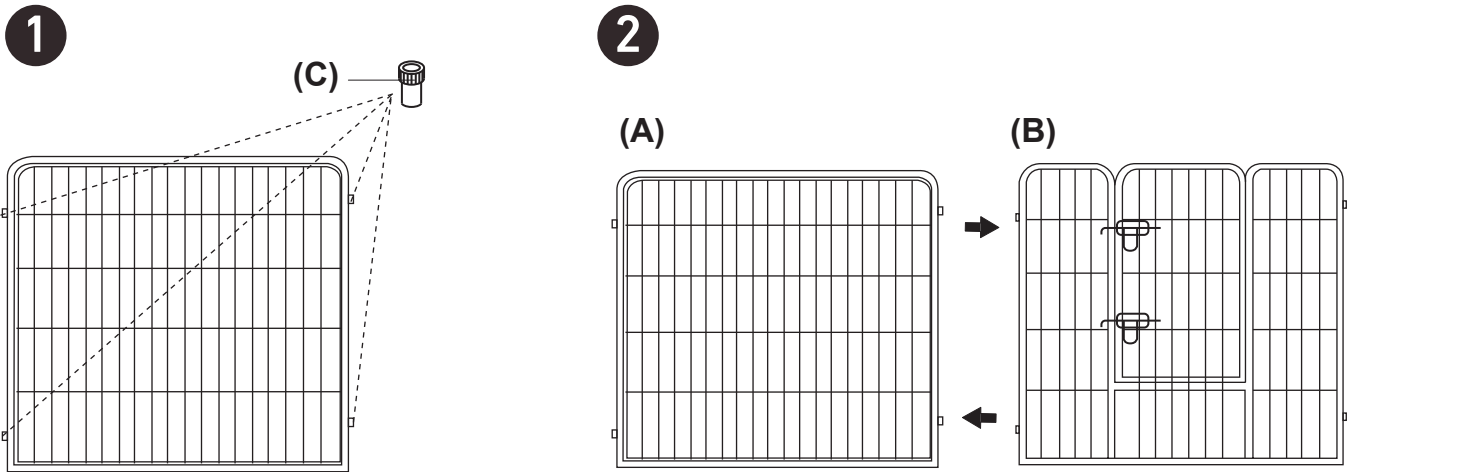
 [HJ-Customer-Service@outlook.com](mailto:HJ-Customer-Service@outlook.com)

 (909)637-7665 | (909)637-7593

# PACK LIST

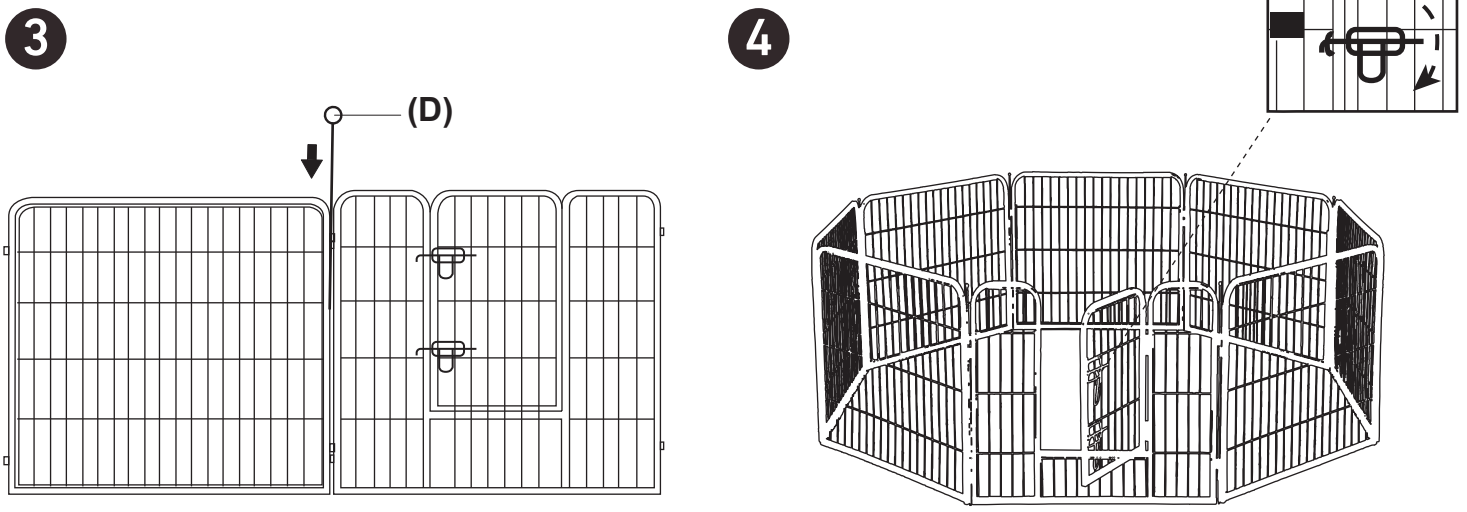
<b>A</b>  <b>(A)*7</b> Side Fence	<b>B</b>  <b>(B)*1</b> Front Fence	<b>C</b>  <b>(C)*32</b> Rubber Plug	<b>D</b>  <b>(D)*8</b> Metal Rod
--	---	---	---

## Assembly Instruction



**Step 1** Press the Rubber Plug **(C)** into the side holes of the Fence **(A)** and **(B)**.

**Step 2** Put the two fences together.



**Step 3** Use the Metal Rod **(D)** to attach the Fence **(A)** and **(B)**.

**Step 4** Piece together to get a complete dog fence.