

# Full Length Mirror

## Instruction Manual

MI-FYLED-2164N-WT



 EST 9:00AM--17:00PM

 [HJ-Customer-Service@outlook.com](mailto:HJ-Customer-Service@outlook.com)

 (909)637-7665 | (909)637-7593

# 1 Before Assembly

---

## Assembly Tips

- Check the list of contents before assembly to ensure that all parts are included in the package.
- Make sure the wall can bear the weight of the mirror.
- Do not use string or chain to hang the products.

## Warning & Caution

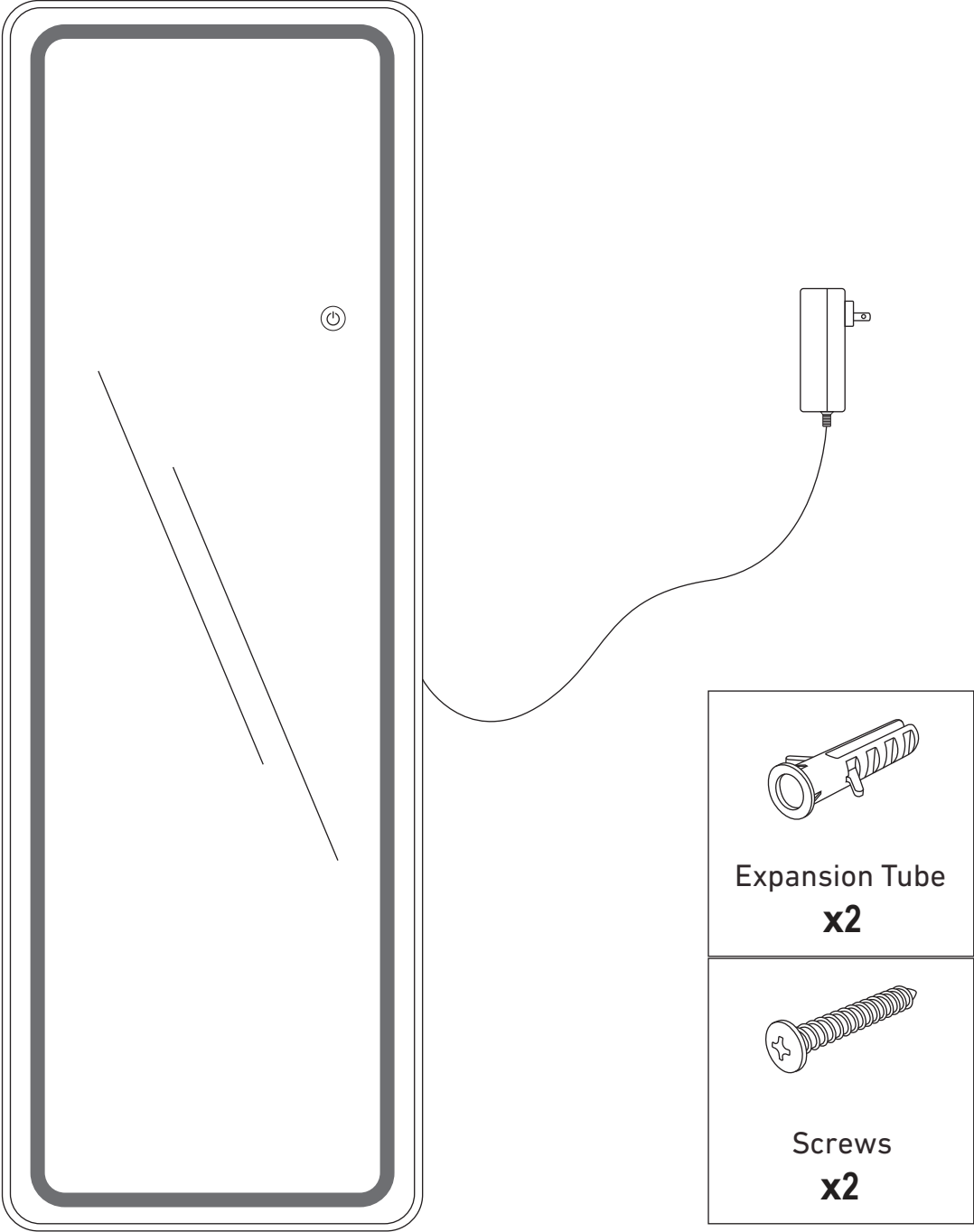
- Turn off electricity at circuit breaker or main fuse box before installation. Consult a licensed electrician if in doubt.
- These instructions are provided for your safety.
- It is very important you read them completely before installing the fixture.
- We strongly recommend that a licensed, professional electrician perform the installation.
- Keep small parts and fittings out of children's reach and keep children well away from construction area.
- This fixture is for indoor use only. Use ONLY the supplied LED driver to power fixture.
- Input 120Vac /60Hz /36W.

## Care Advice

- Before using, clean with warm water and a soft, lint-free cloth.
- Check all the screws and bolts are tight every three months or as needed.
- Clean with an ammonia-free glass cleaner or detergent.
- Avoid spraying cleaners directly onto the mirror.

# 2 Package List

---



Mirror  
**x1**

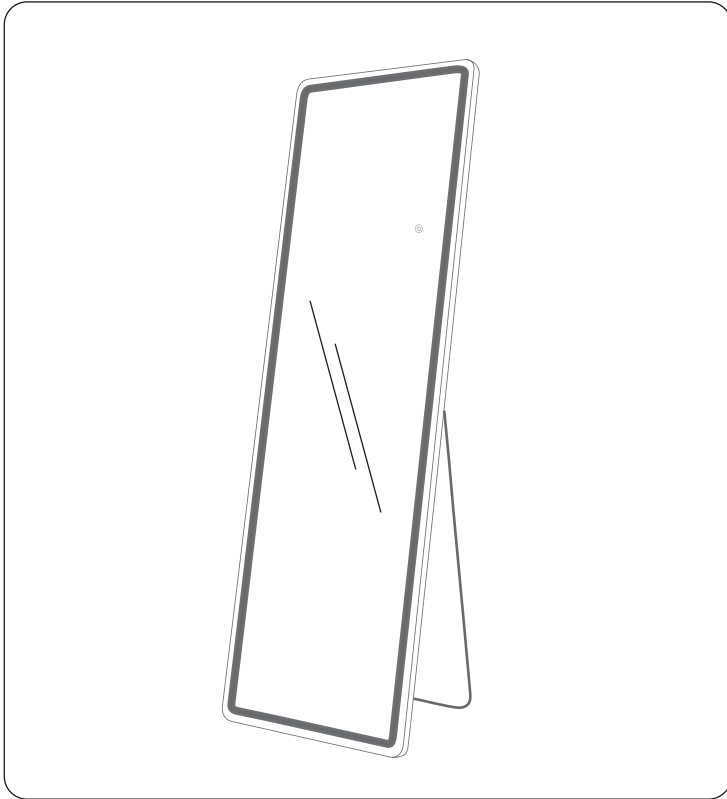
## Tools Required (Not Provided)



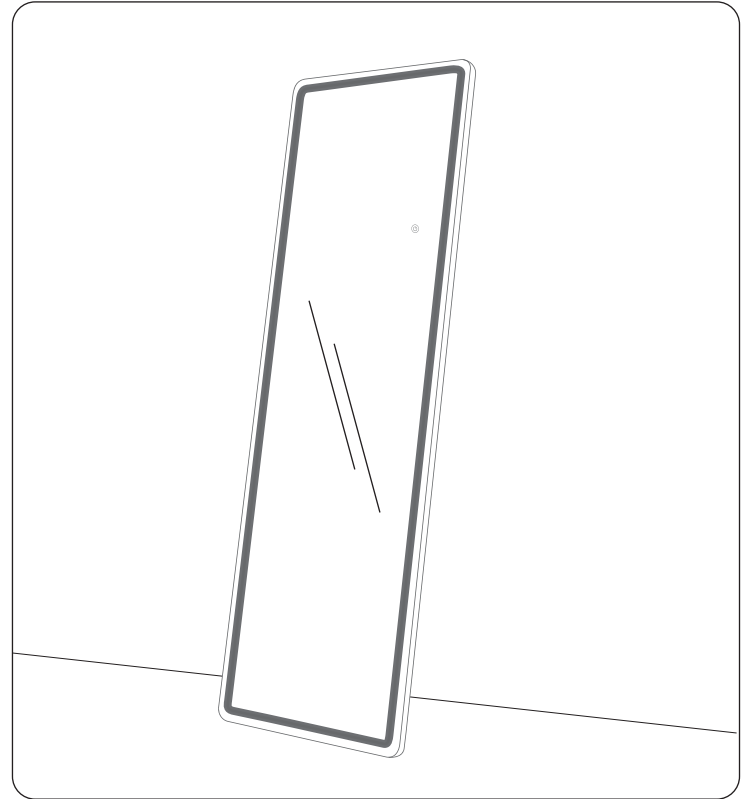
# 3 Usage Method

---

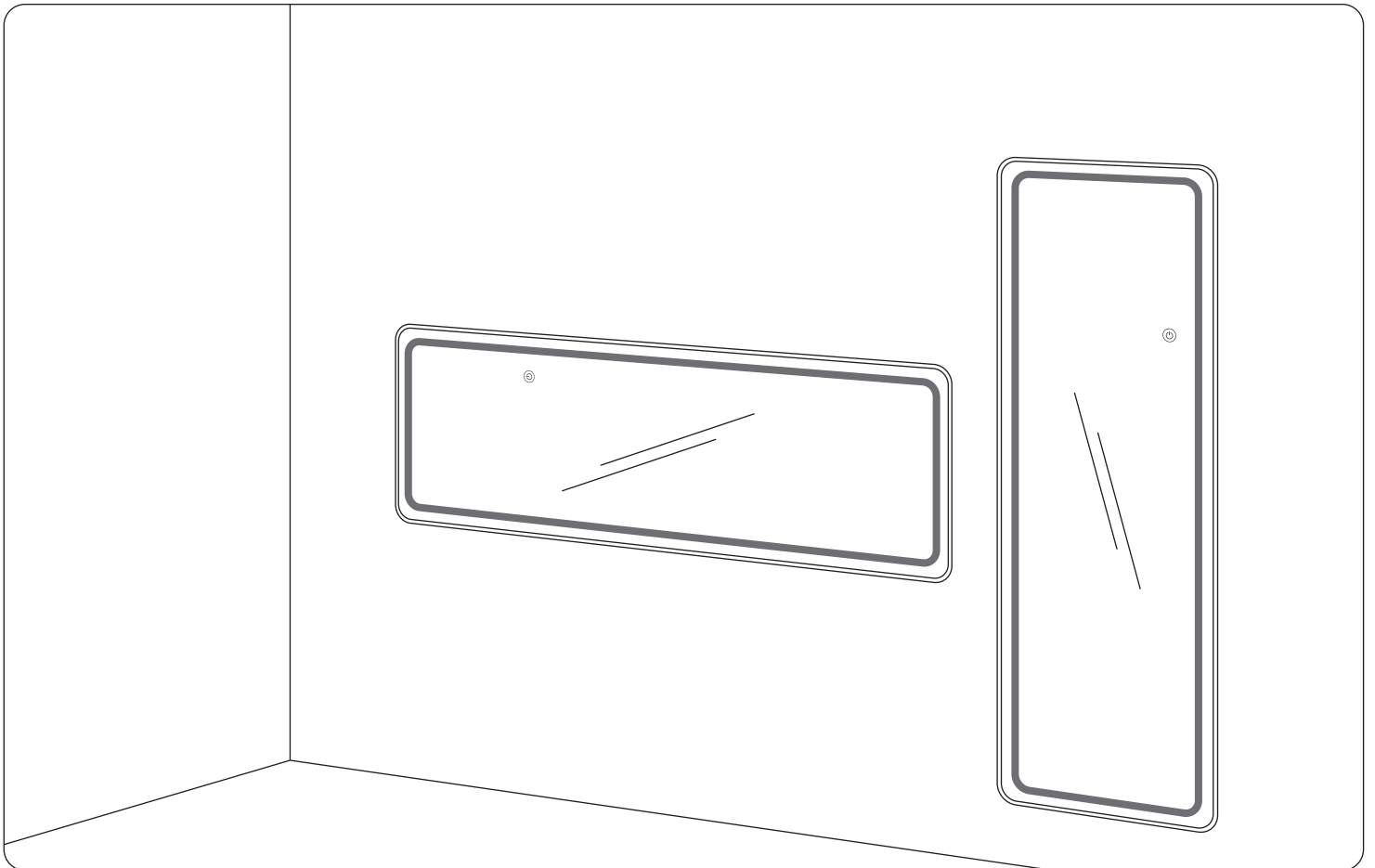
Standing



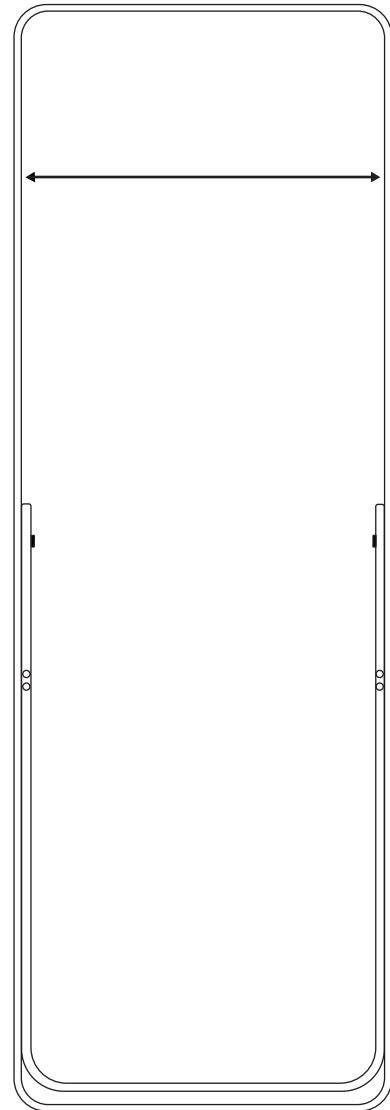
Leaning



Hanging

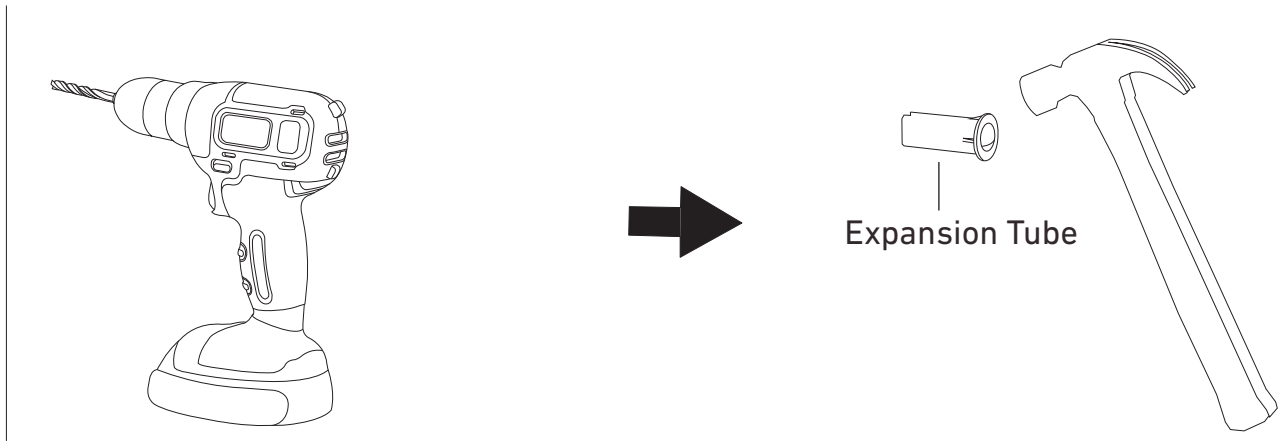


# Step 1



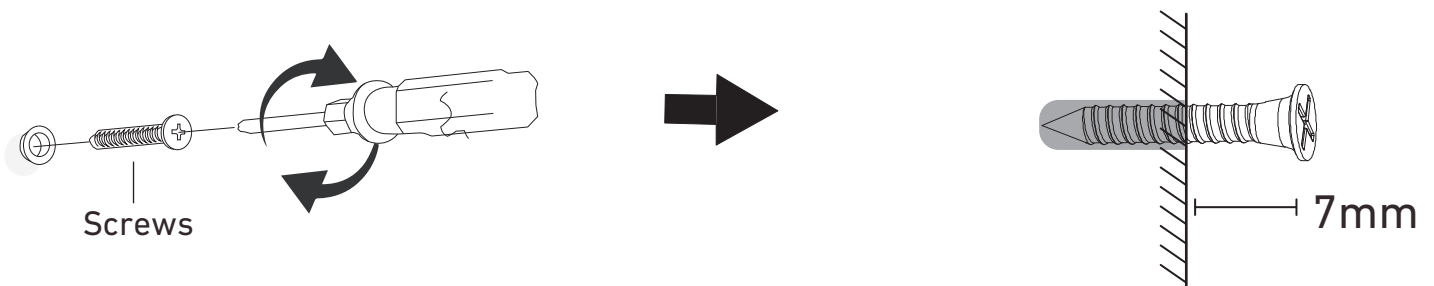
Use a ruler to accurately measure the distance between the mirror's two hooks, then measure and mark the same distance on the wall. Make sure they match perfectly.

## Step 2



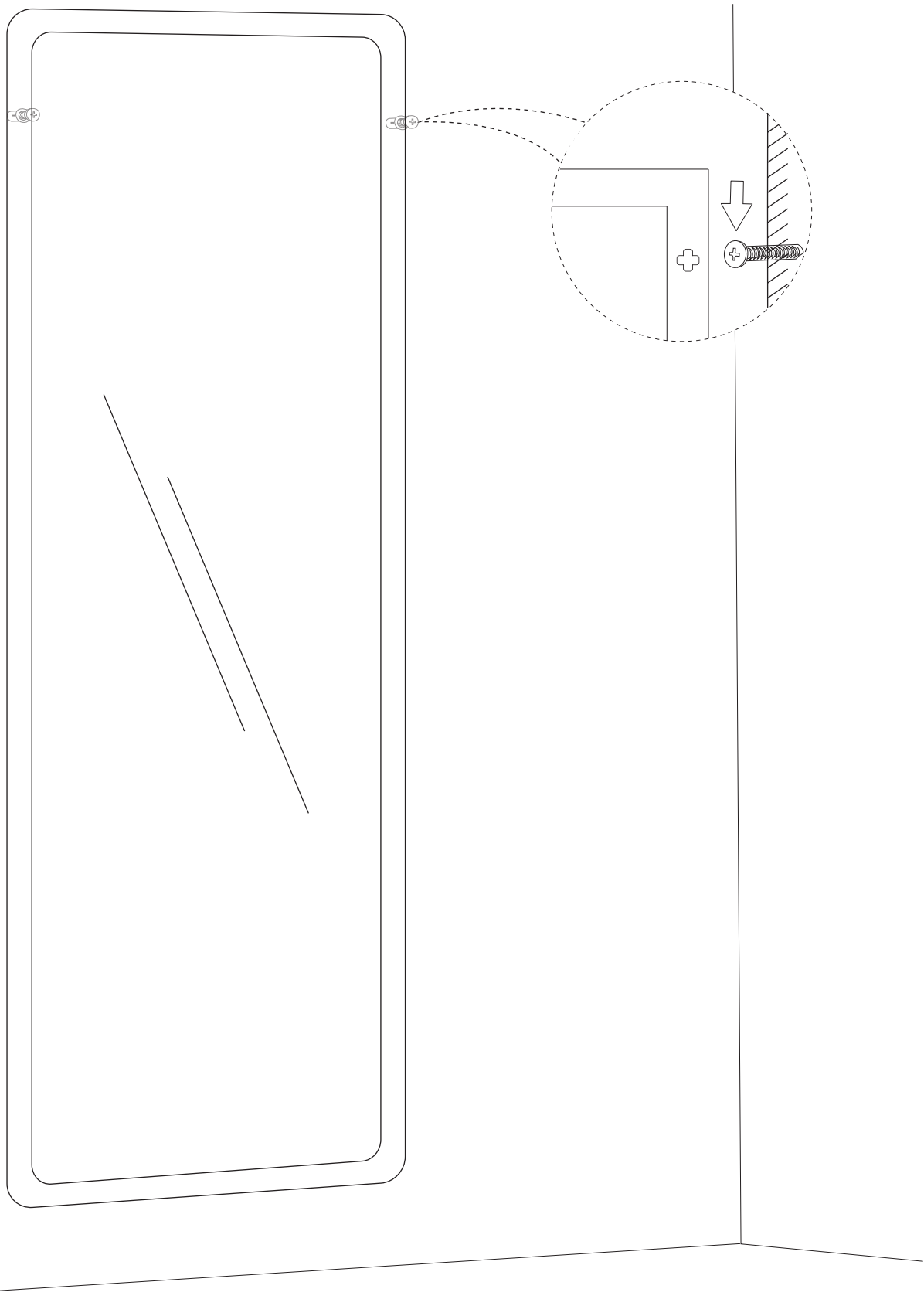
Drill holes at the marked positions on the wall. Hammer the Expansion Tube into the holes.

## Step 3



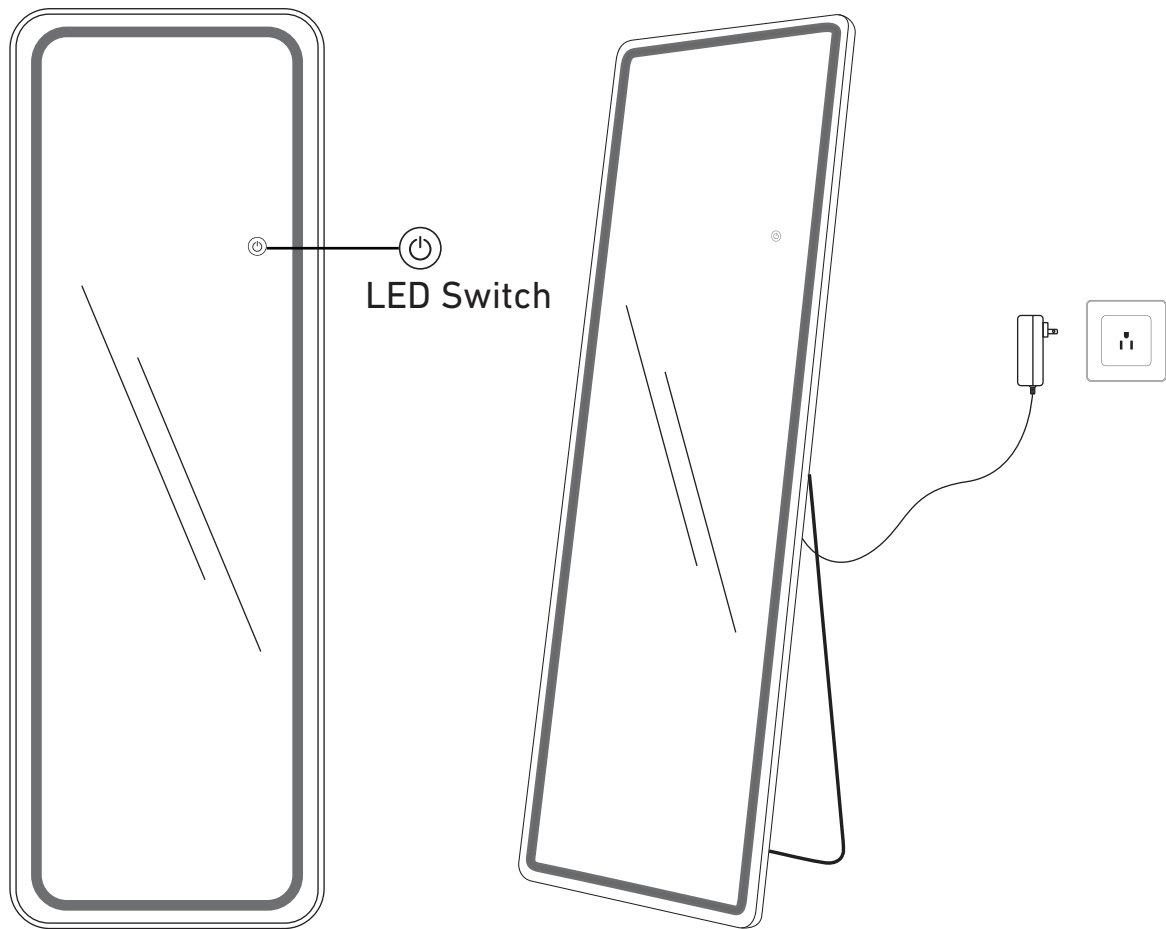
Fix the Screws into the Expansion Tube, leaving about **7mm** of the screws exposed.

# Step 4



Hang the Mirror on the wall.

## Step 5



Junction box(not supplied)

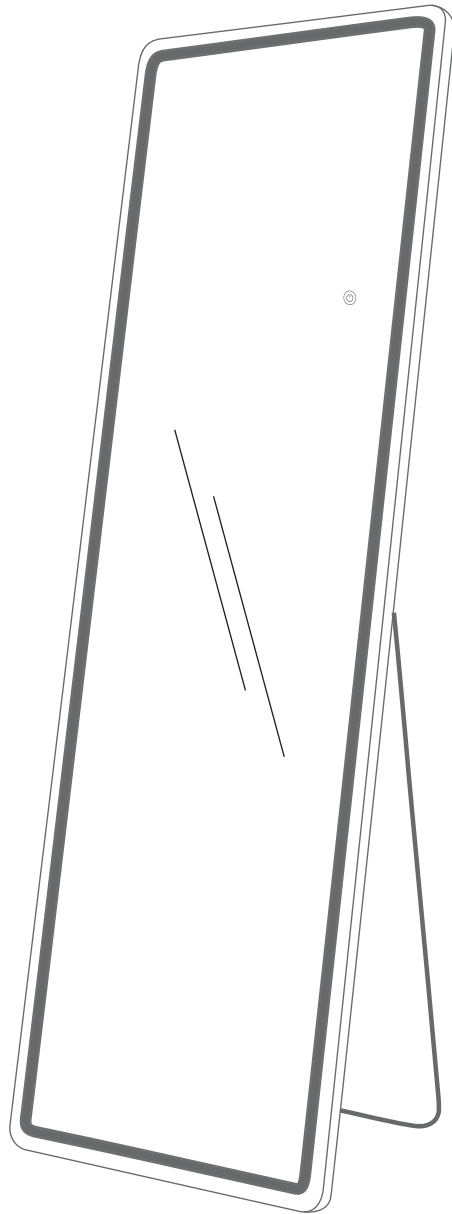
**Warning:** Must be operated by a professional licensed electrician.

### ON/OFF/Color temperature changing

**【3 COLORS & DIMMING FUNCTION】** Short press the intelligent touch button to turn on/off and adjust 3 colors: warm light, cold white, and warm white. Press and hold this button for a few seconds to adjust the brightness you like.

**DISCLAIMER:** Be careful! Glass products are fragile and may badly injure users. It should be clearly known by users that company won't be responsible for any injuries caused during use.





## **Technical Support**

(909)637-7665 | (909)637-7593

## **Other Info**

[HJ-Customer-Service@outlook.com](mailto:HJ-Customer-Service@outlook.com)

Thank you for choosing this product. We strive to provide you with the best quality products and service in the industry. Should you have any issues, please don't hesitate to contact us.