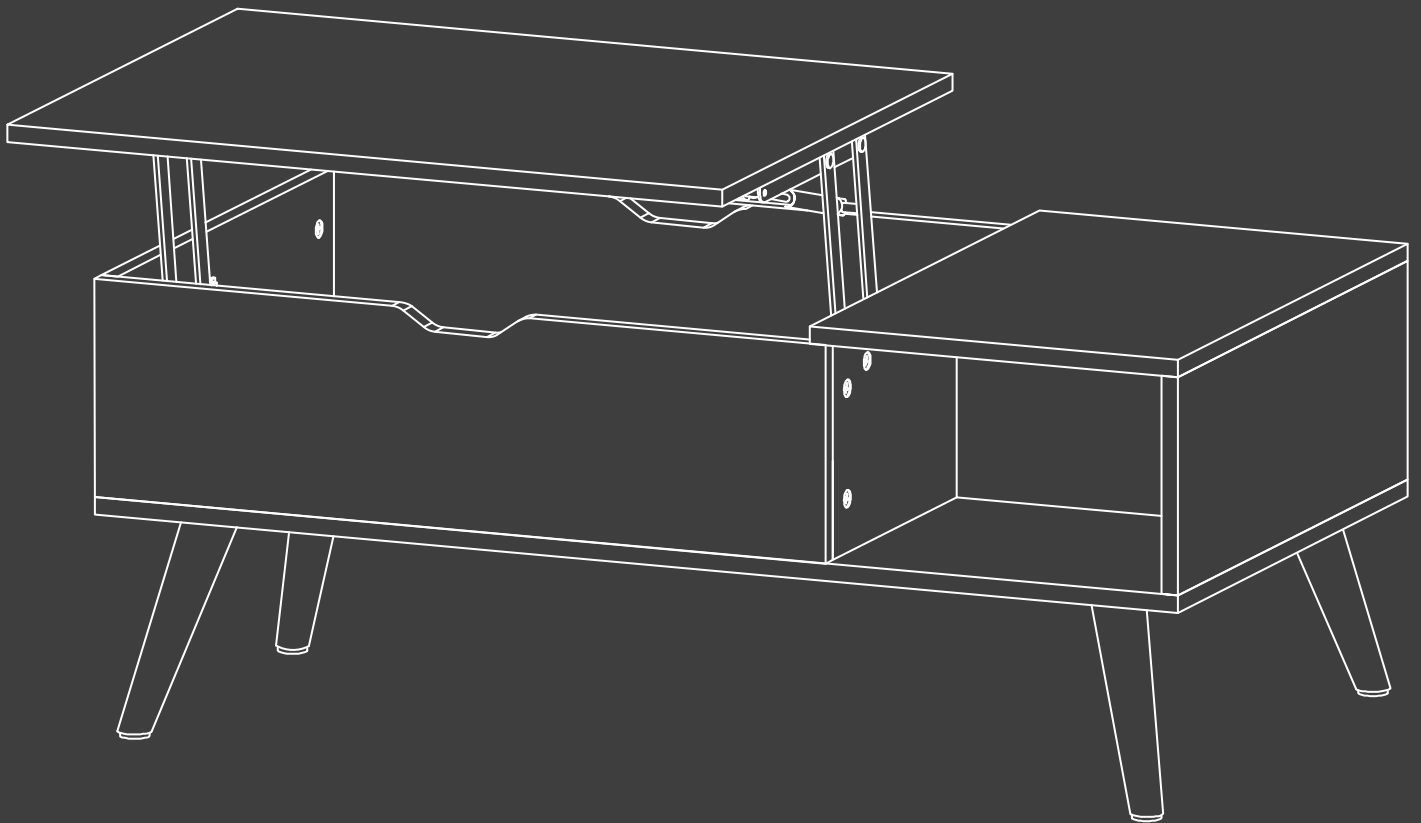


Lift Top Coffee Table

Instruction Manual

T-LIFT-001

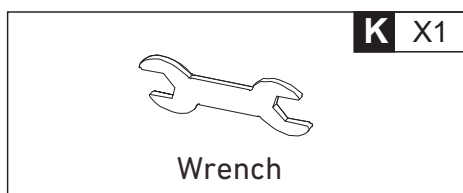
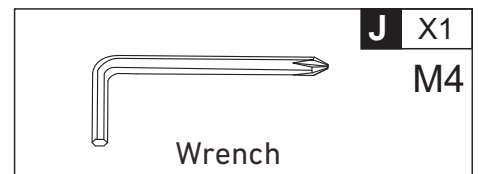
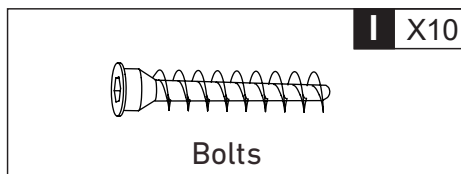
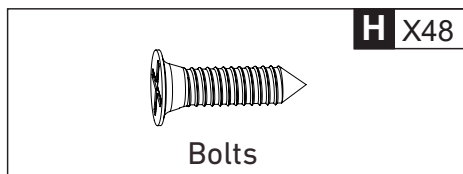
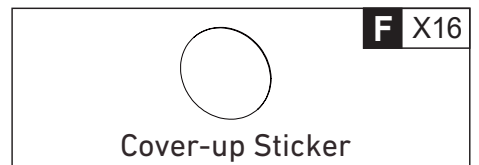
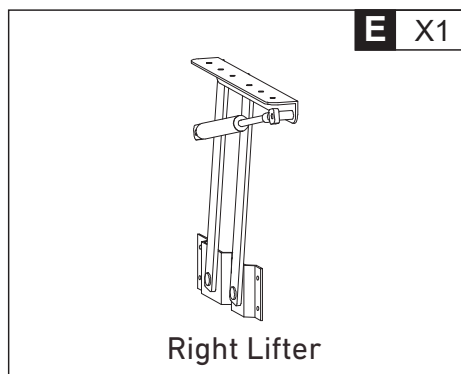
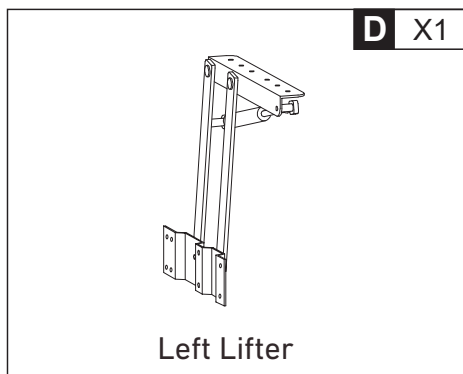
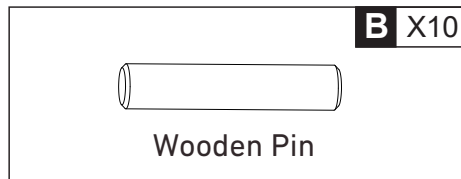
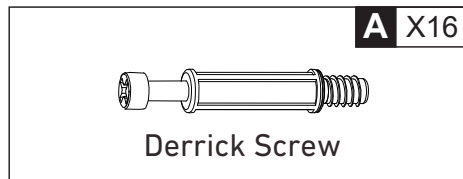
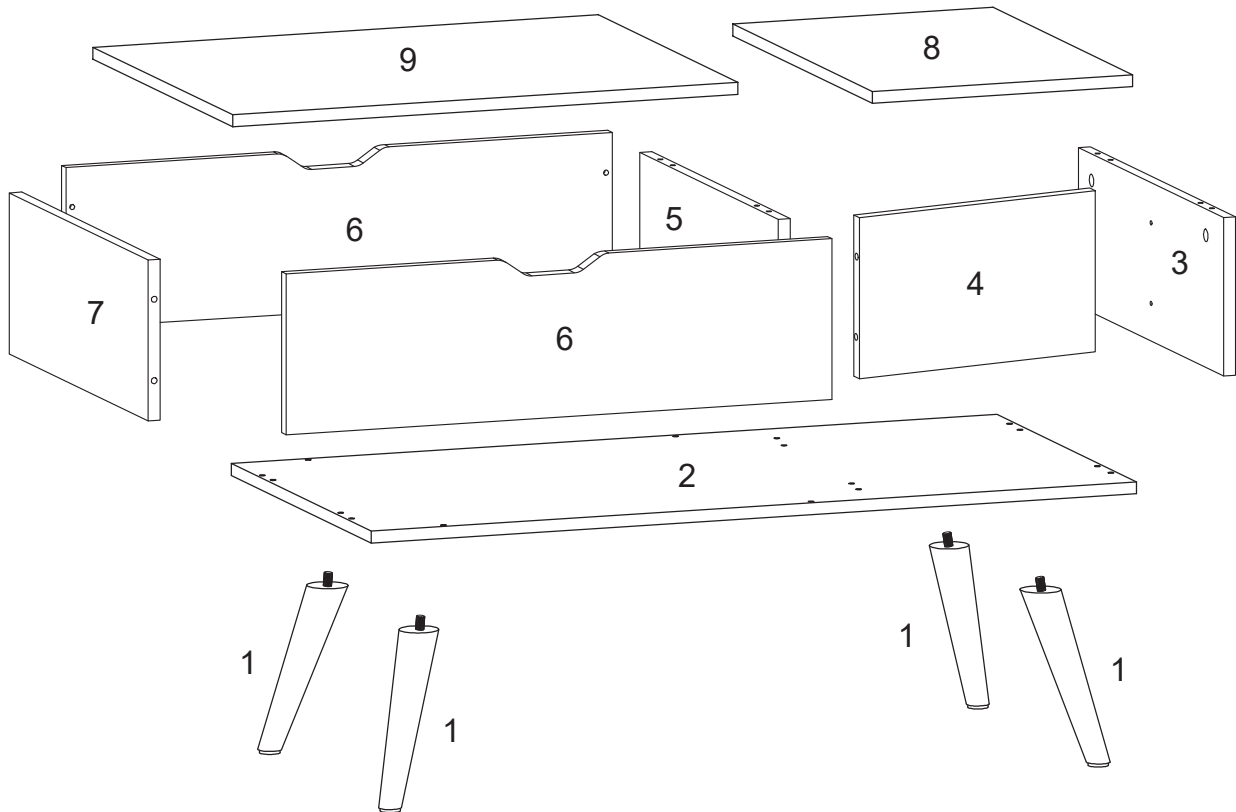


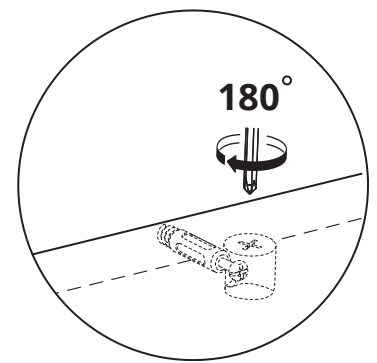
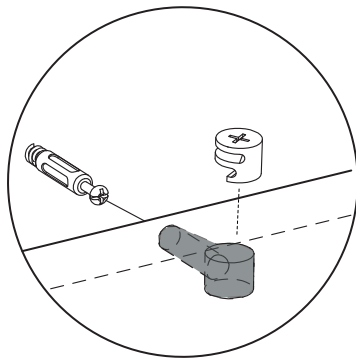
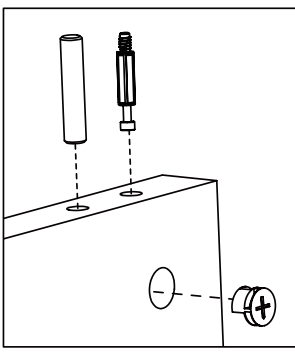
✉ HJ-Customer-Service@outlook.com

☎ (909)637-7665 | (909)637-7593

EST 9:00AM--17:00PM

1 Component List

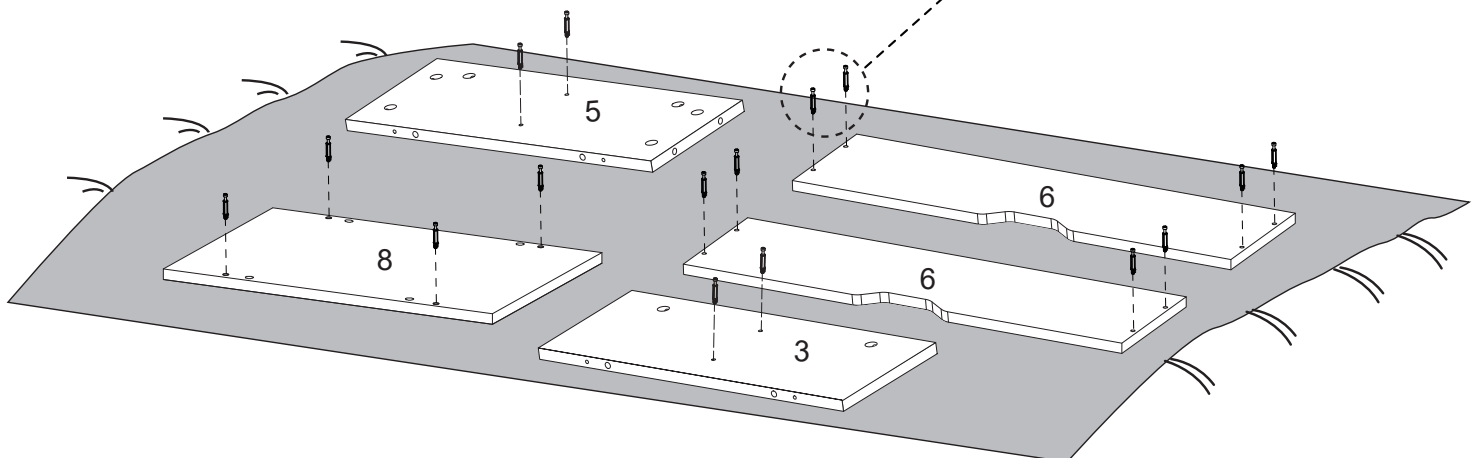
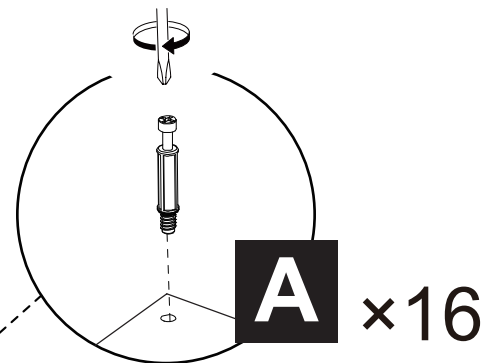
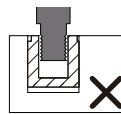
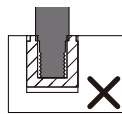
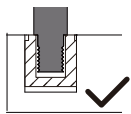
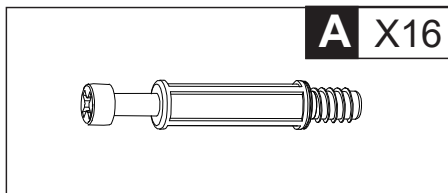




NOTE:

- 1.As shown, make sure each part is in the correct position.
- 2.Make sure the gap of the Eccentric Wheel is aligned with the Derrick Screw, and then tighten it completely.

Step 1

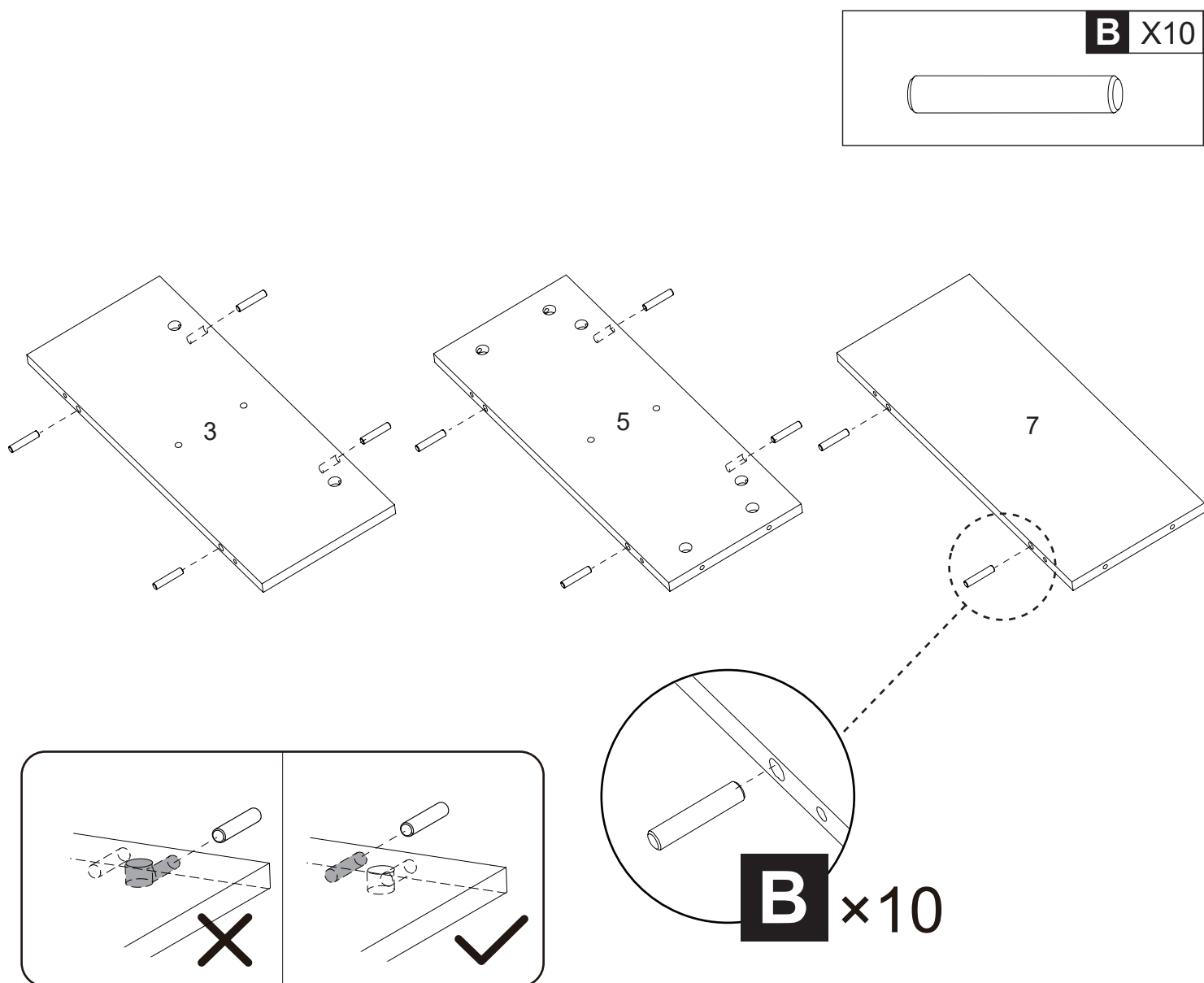


Fix Derrick Screw (A)*16 to Board (3), (5), (6)*2, (8) as shown.

NOTE:

1. Put a blanket under the board to avoid scratch or damage.
2. Please do not screw Derrick Screw (A) too deep or too shallow.

Step 2

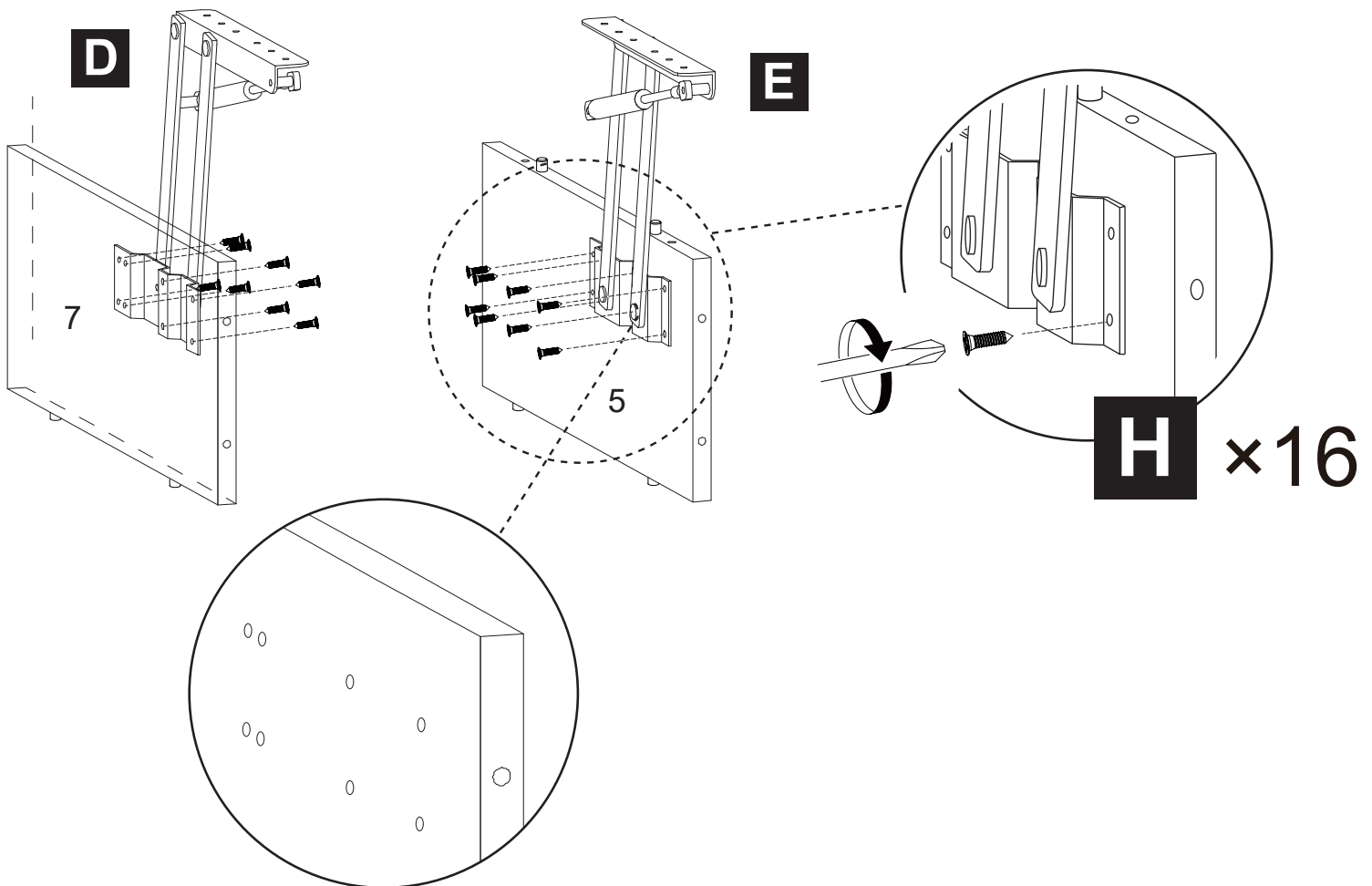
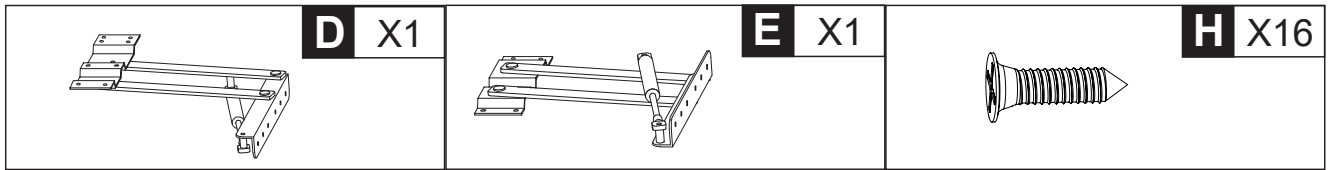


Attach Wooden Pin (**B**)*10 to Board (**3**), (**5**) and (**7**).

NOTE:

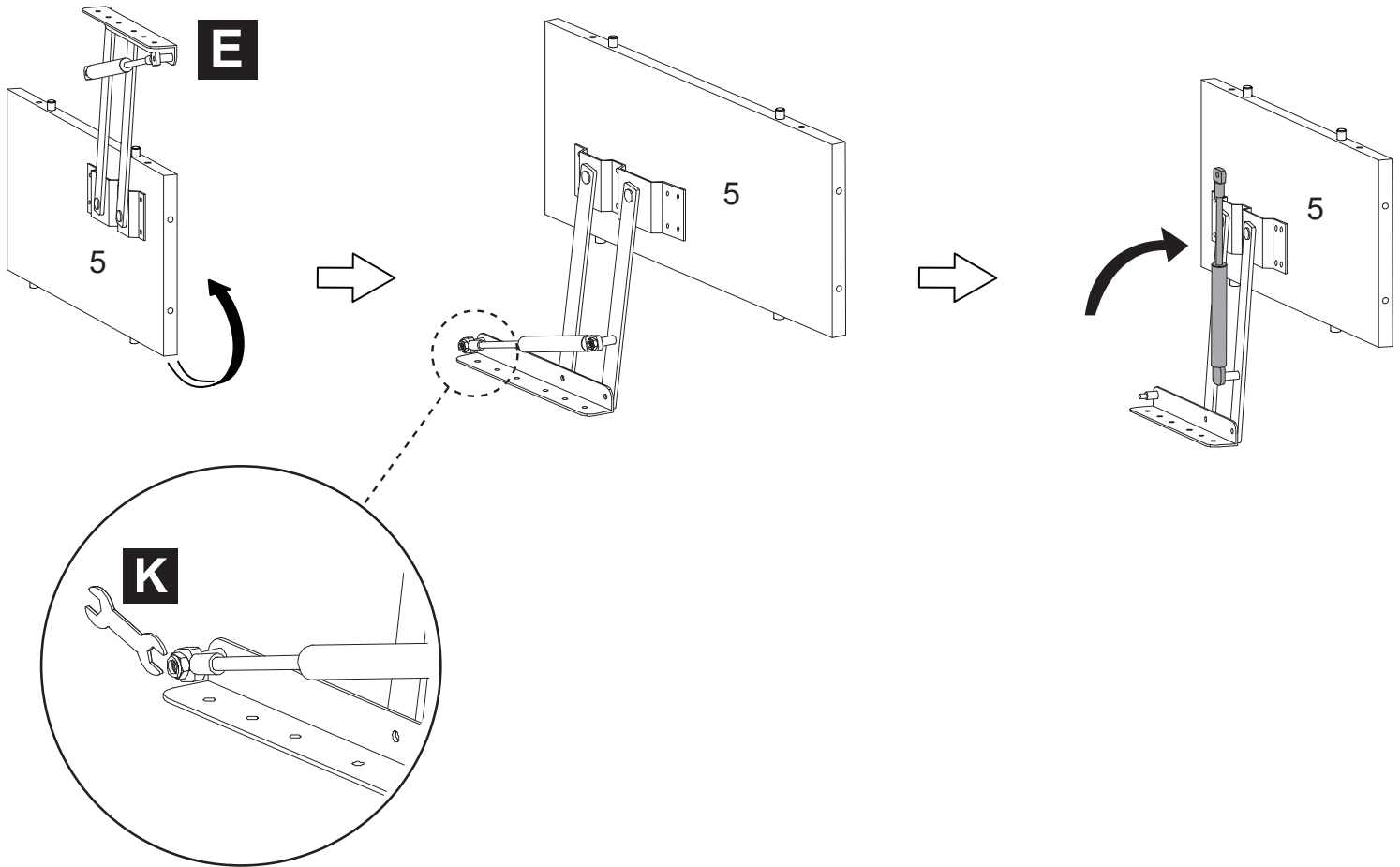
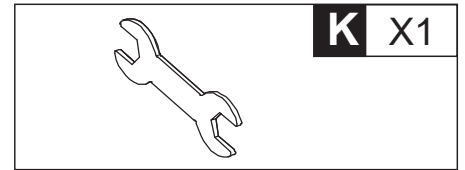
Install Wooden Pin (**B**) into the inner holes, not the outer holes.

Step 3



Using Bolts **(H)*16**, install Left Lifter **(D)** to the pre-drilled holes on the inside of Board **(7)**, and Right Lifter **(E)** to the pre-drilled holes on the inside of Board **(5)**.

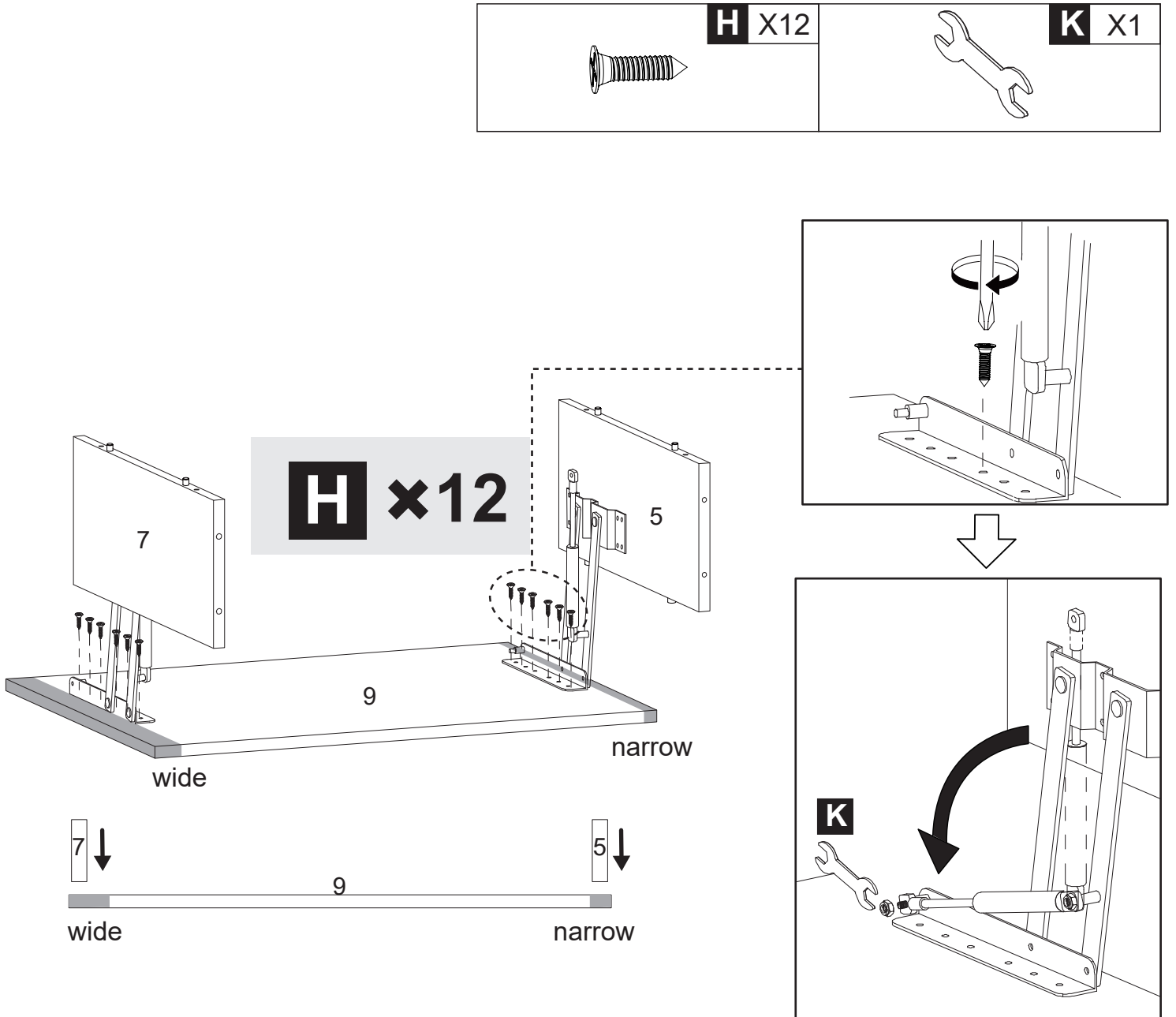
Step 4



With Right Lifter (**E**) facing down, use Wrench (**K**) to unscrew the nut at the connection, then lift the damping rod.

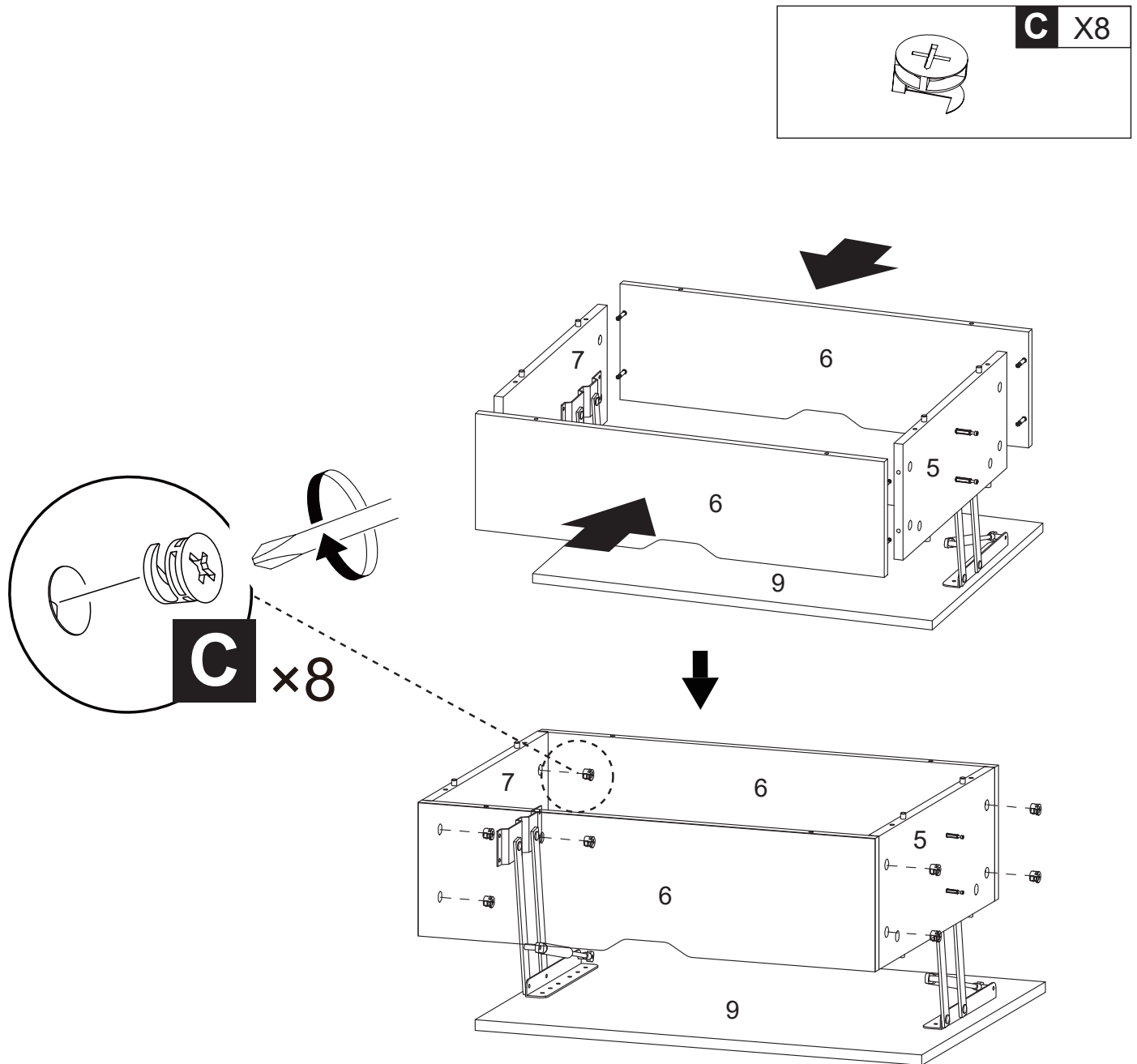
Prepare Left Lifter (**D**) and Board (**7**) in the same way.

Step 5



Using Bolts **(H)*12**, install Left Lifter **(D)** to the “wide” side of Board **(9)** and Right Lifter **(E)** to the “narrow” side of Board **(9)**, then lower the damping rod and re-tighten the nut with Wrench **(K)**.

Step 6

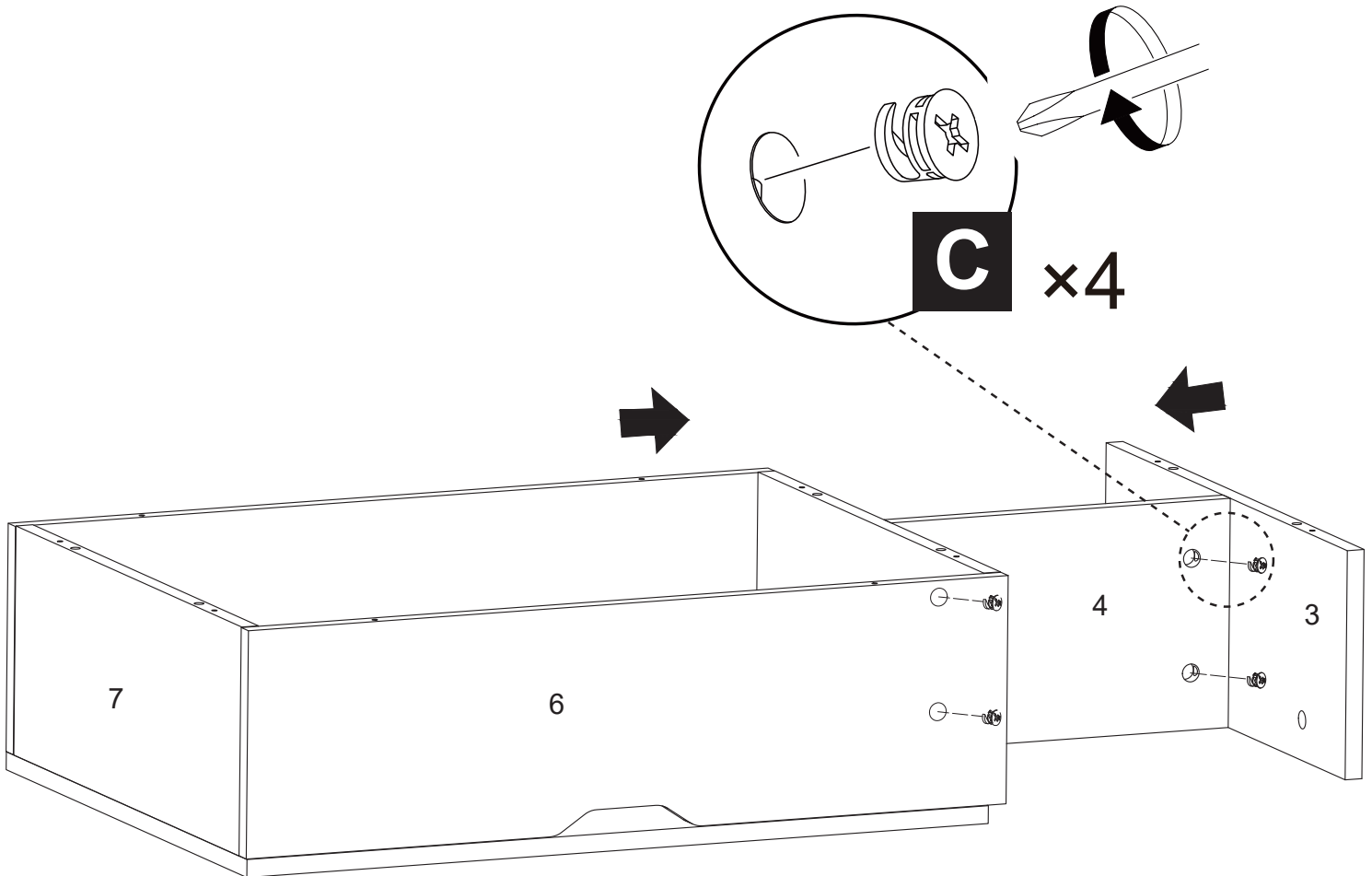
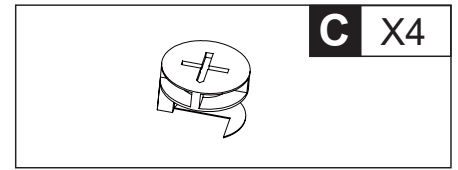


With the notched side of Board **(6)** facing down, install Board **(6)*2** to Boards **(5&7)** with Eccentric Wheel **(C)*8**.

NOTE:

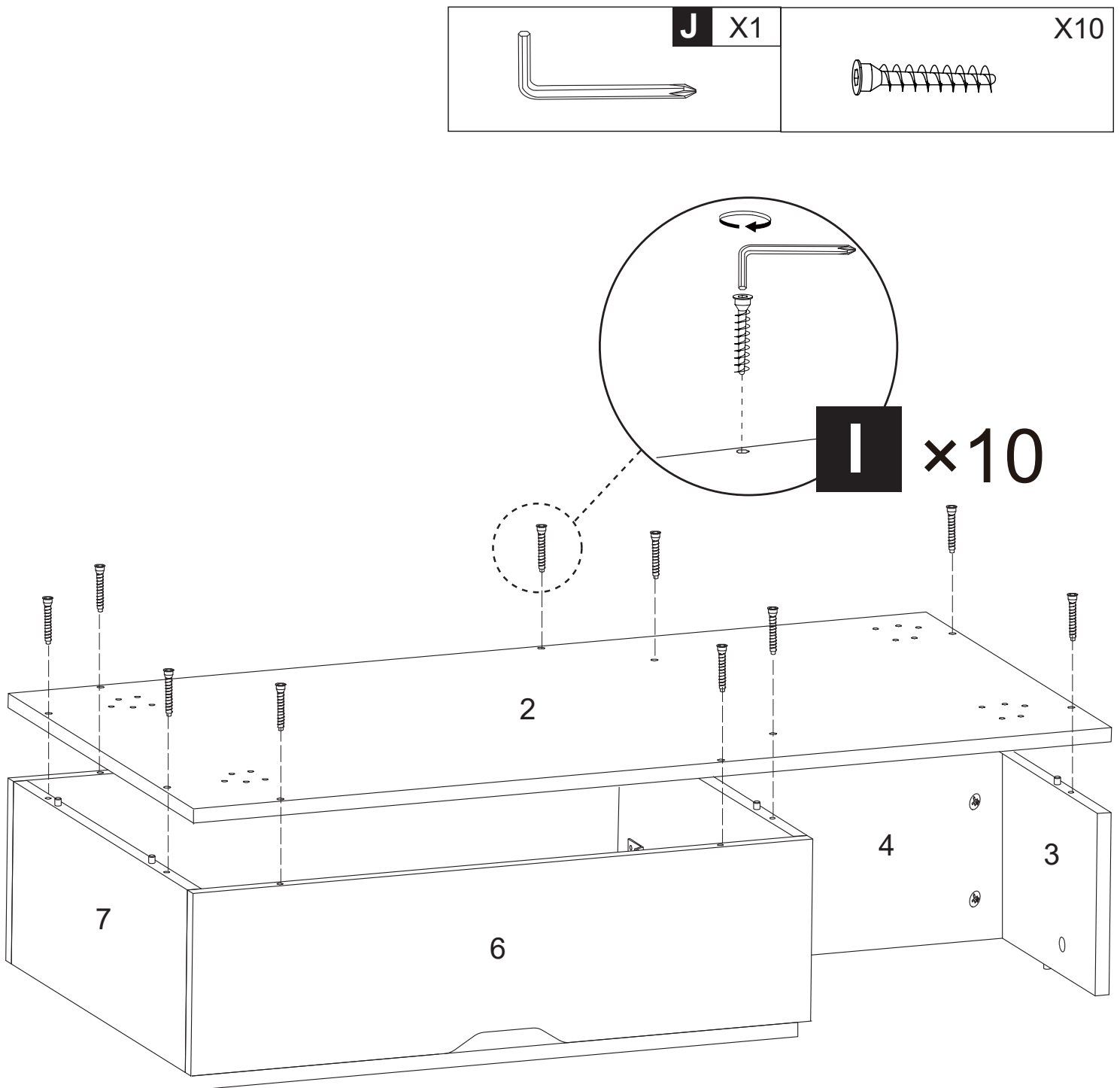
The screw holes of Board **(7)** are on the inside and the screw holes of Board **(5)** are on the outside.

Step 7



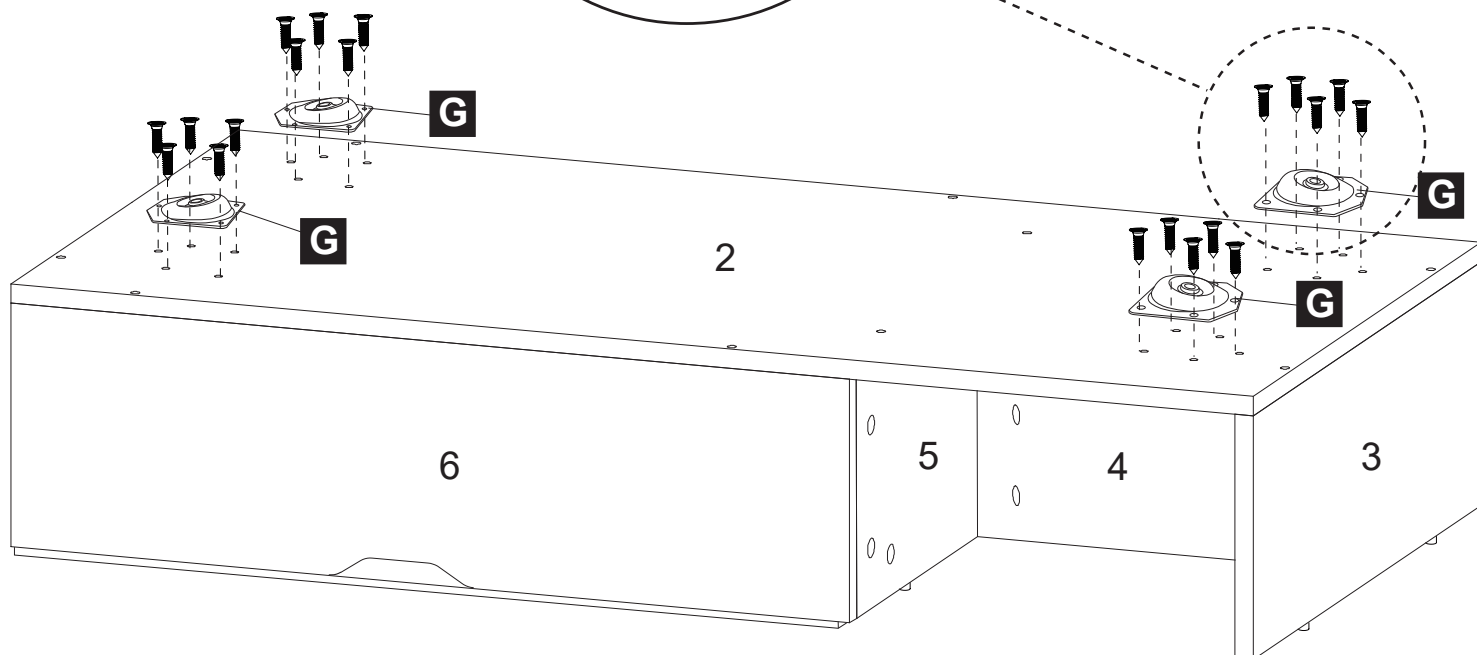
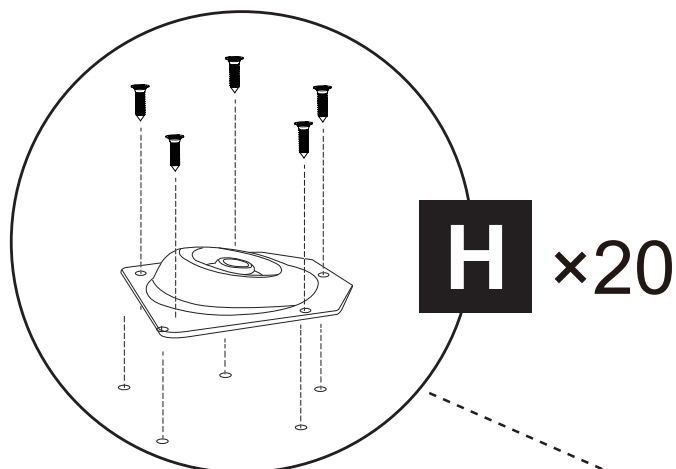
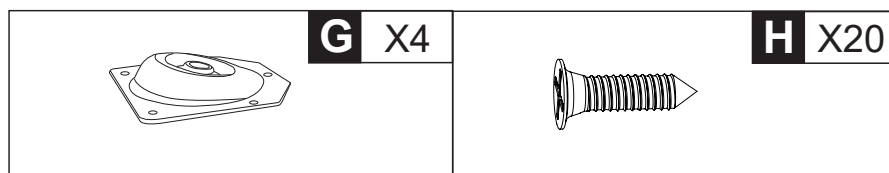
As shown, install Board (4) to Board (5), and install Board (3) to Board (4) with Eccentric Wheel (C)*4.

Step 8



Using Wrench (**J**), install Board (**2**) to the completed frame with Bolts (**I**)*10.

Step 9

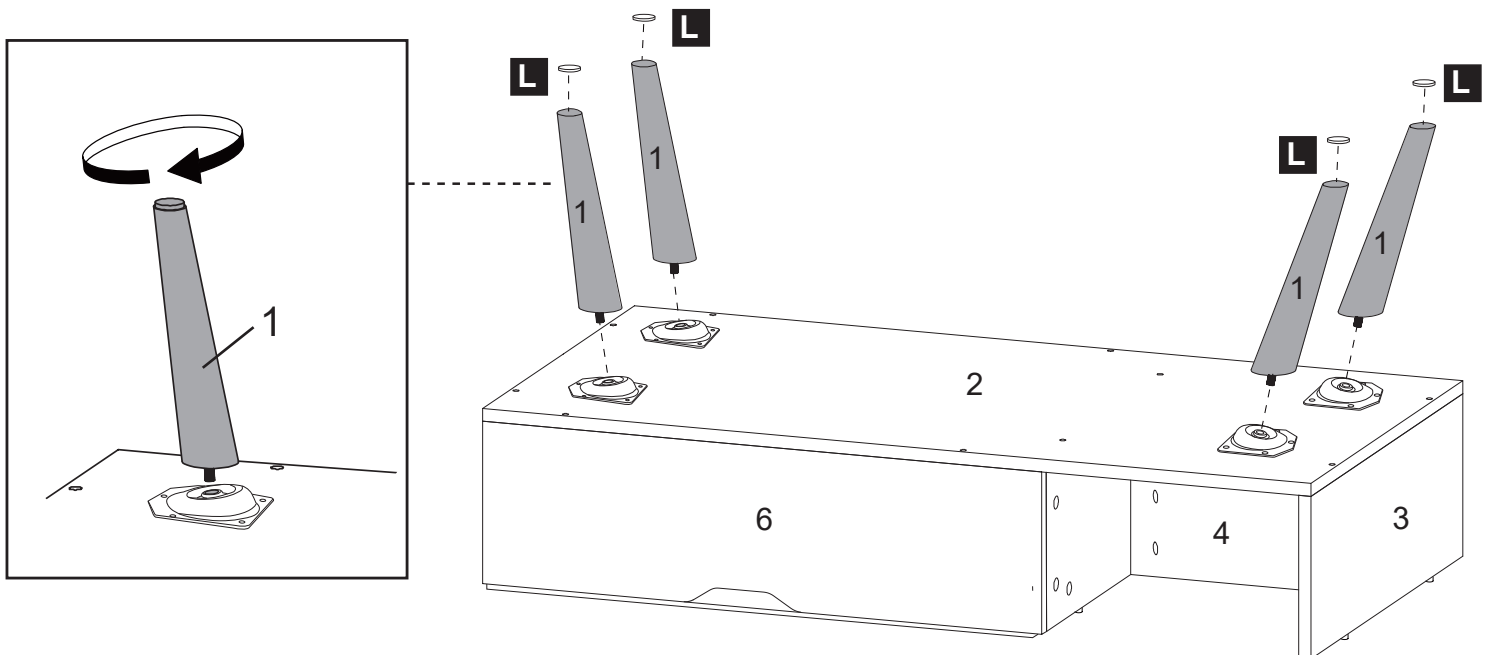
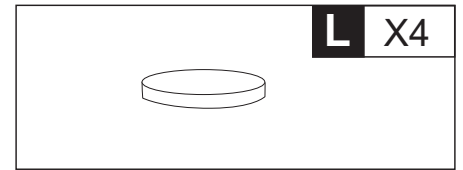


Using Bolts **(H)*20**, install Solid Wood Foot Connector **(G)*4** to the four corners of Board **(2)**.

NOTE:

The Wooden Foot Connector **(G)*4** faces outward.

Step 10

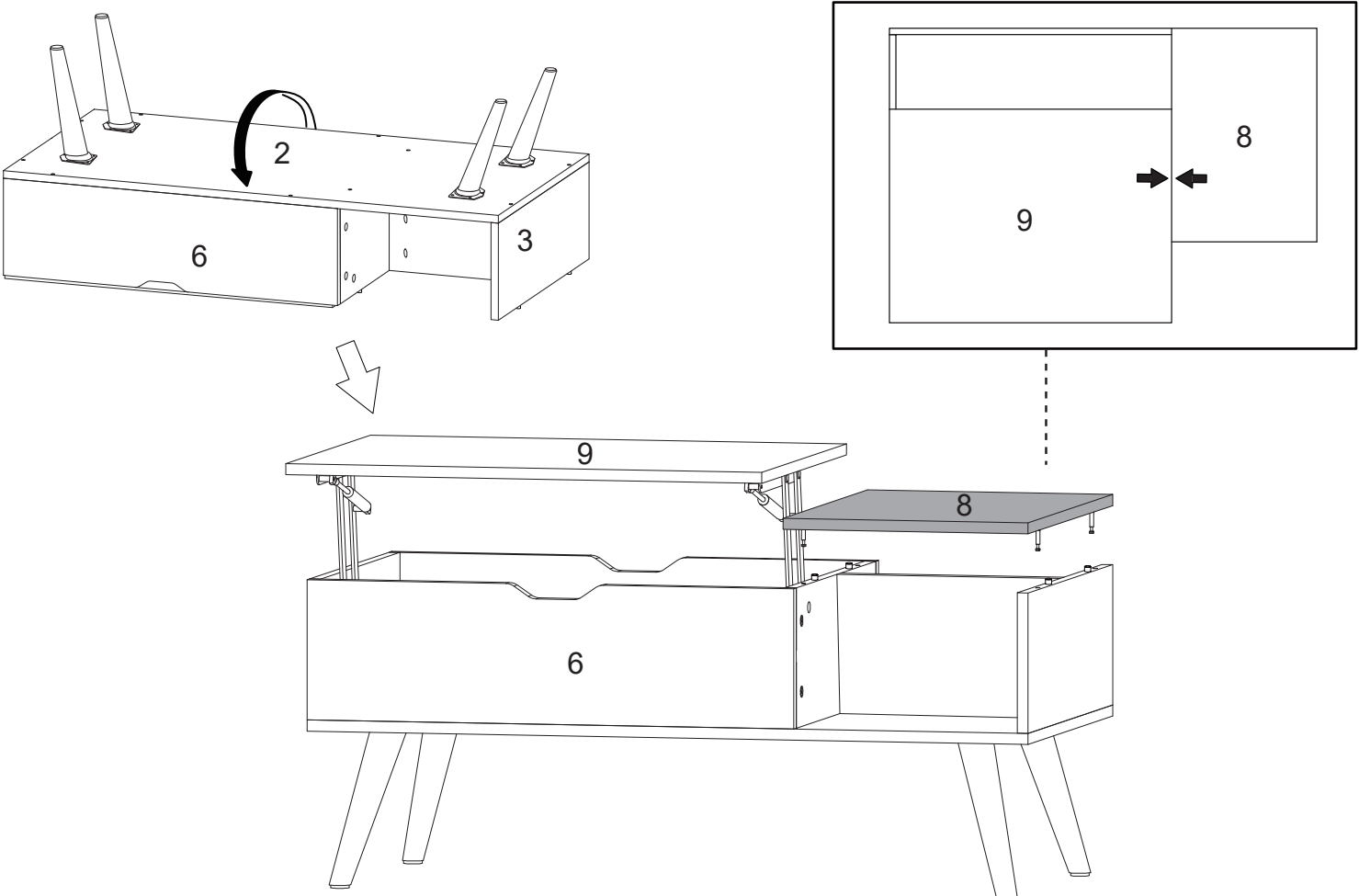


Tighten Wooden Leg (1)*4 completely, and glue Silicone Foot Pad (L)*4 on the bottom of it.

NOTE:

Please wait for 3 minutes until Silicone Foot Pad (L) are completely glued.

Step 11

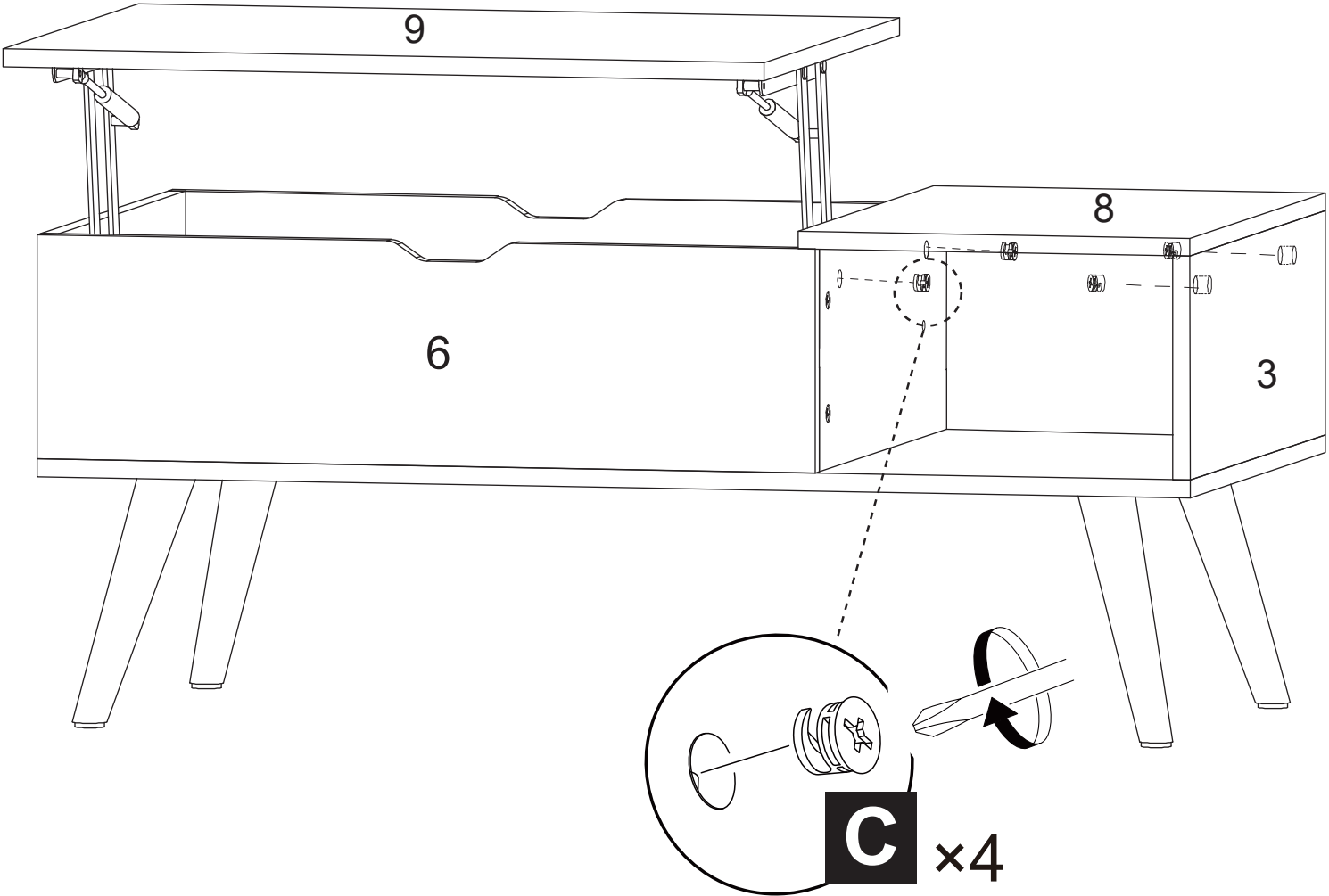
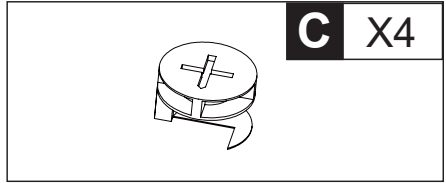


Attach Board (8) to Boards (3&5).

NOTE:

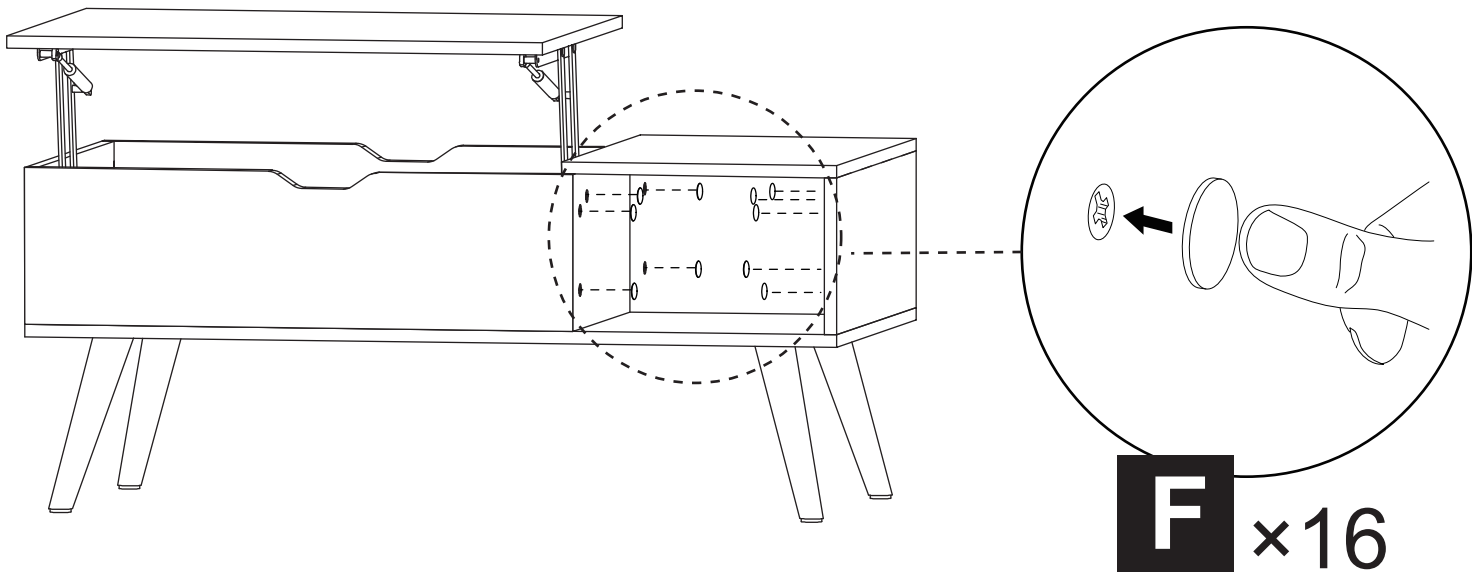
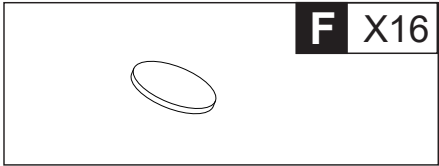
Make sure arrows on Board (9) and Board (8) point to each other.

Step 12

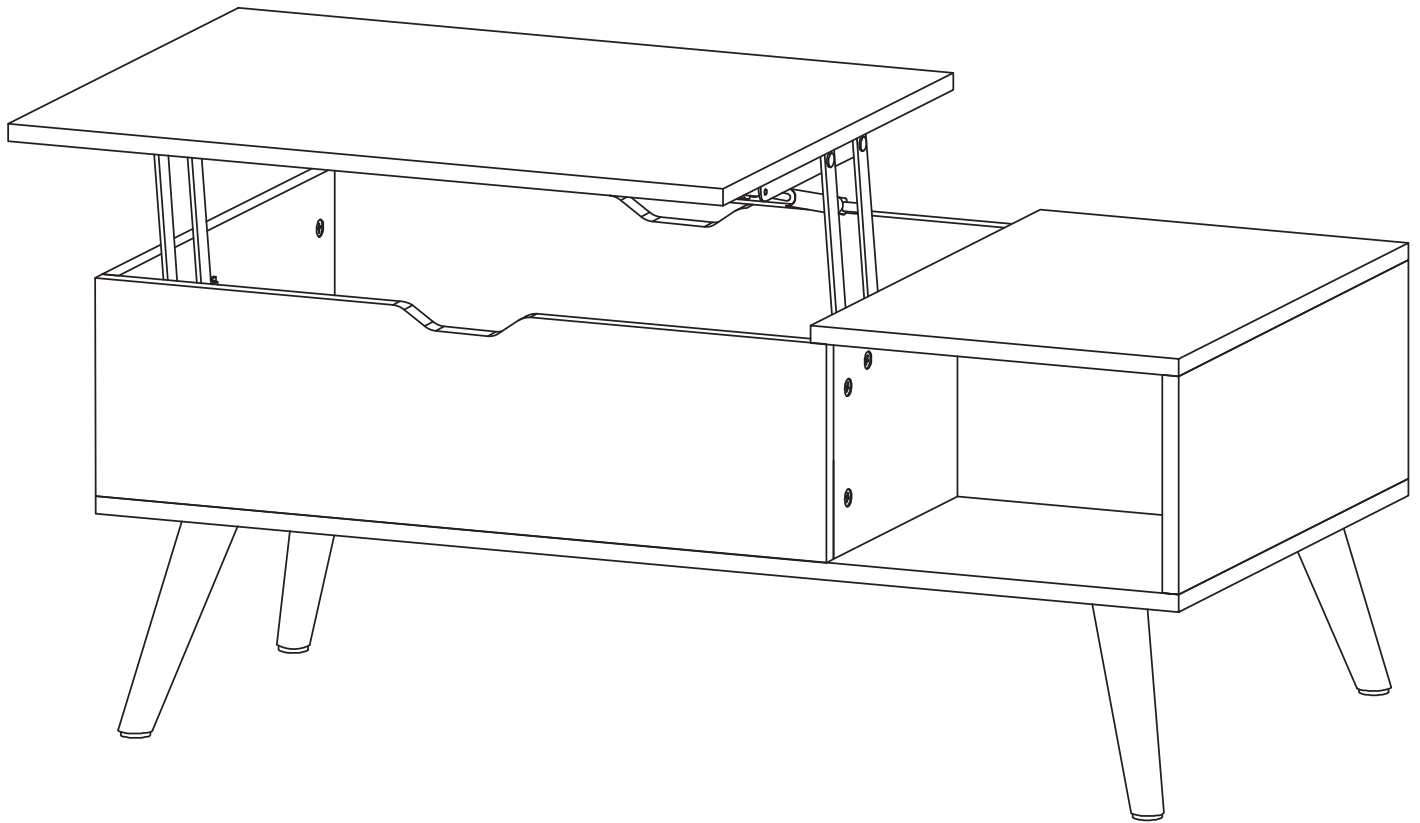


Tighten Eccentric Wheel (C)*4 and make sure Board (8) is fixed.

Step 13



As shown, use Cover-up Sticker **(F)*16** to cover the exposed part of bolts.



Technical Support

(909)637-7665 | (909)637-7593

Other Info

HJ-Customer-Service@outlook.com



Thank you for choosing this product. We strive to provide you with the best quality products and service in the industry. Should you have any issues, please don't hesitate to contact us.

<https://hlinstallationvideos.s3.amazonaws.com/T-LIFT-001-Lift+Top+Coffee+Table.mp4>