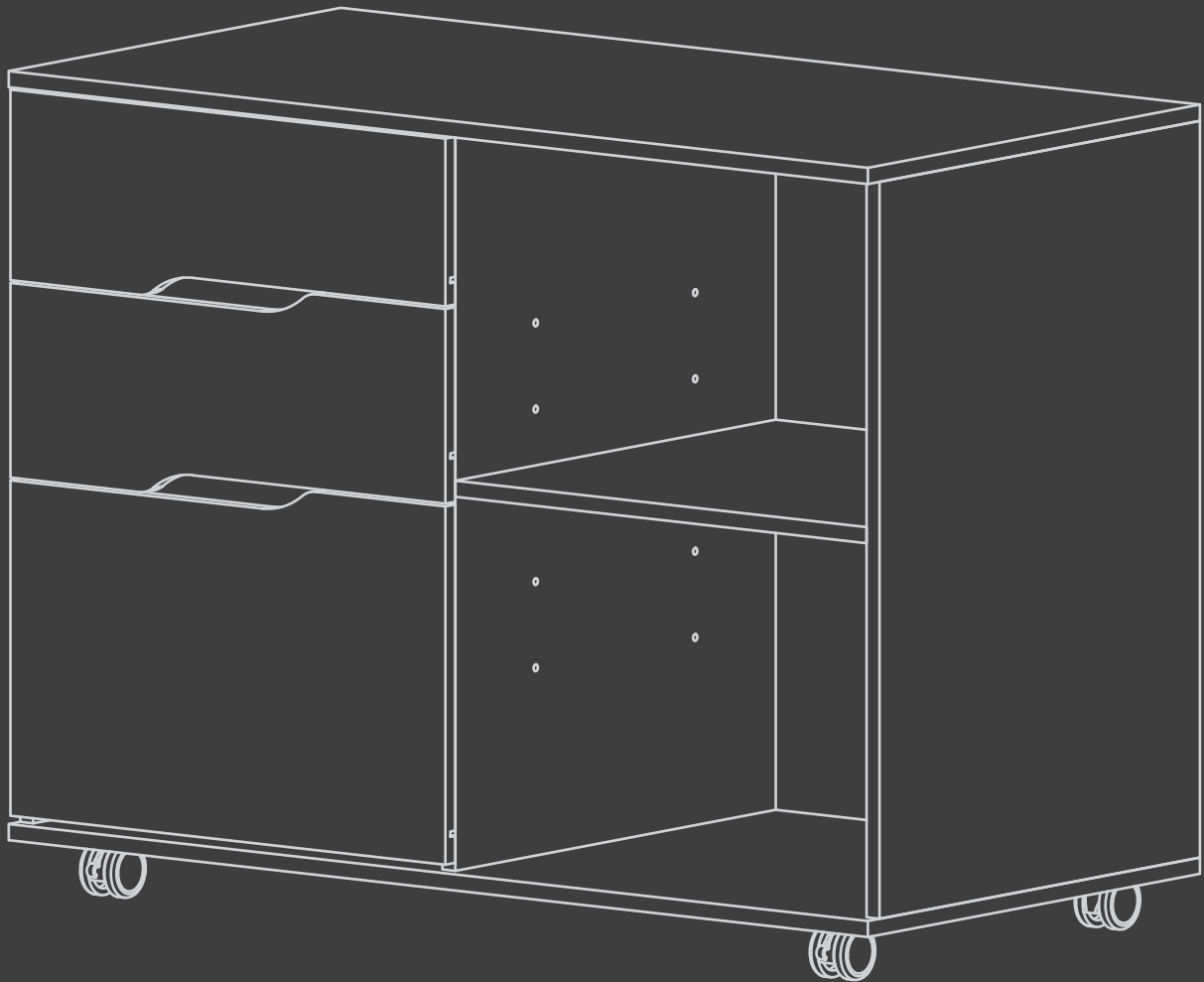


# Mobile Lateral Filing Cabinet

## Instruction Manual

3CHDG-01

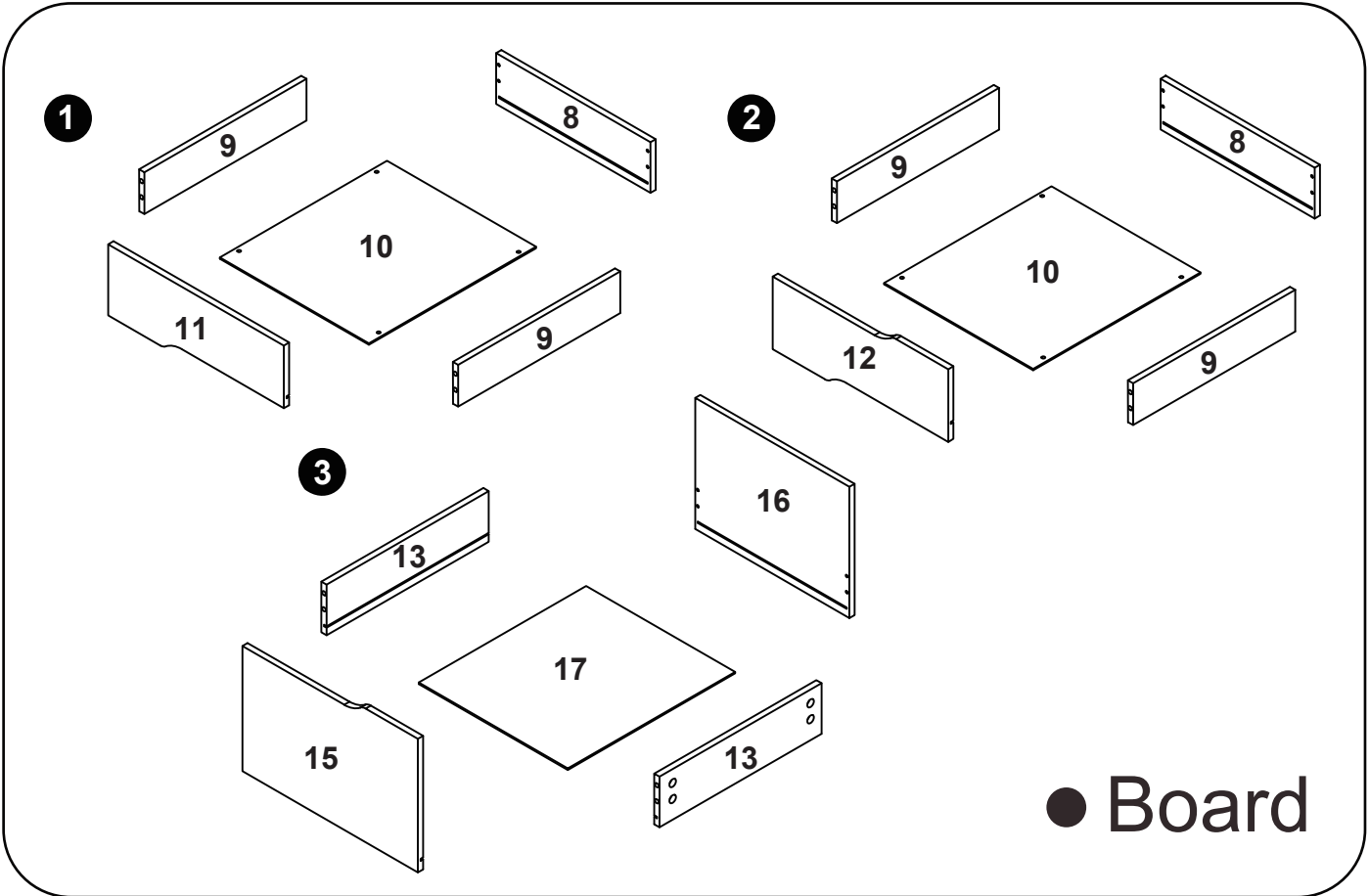
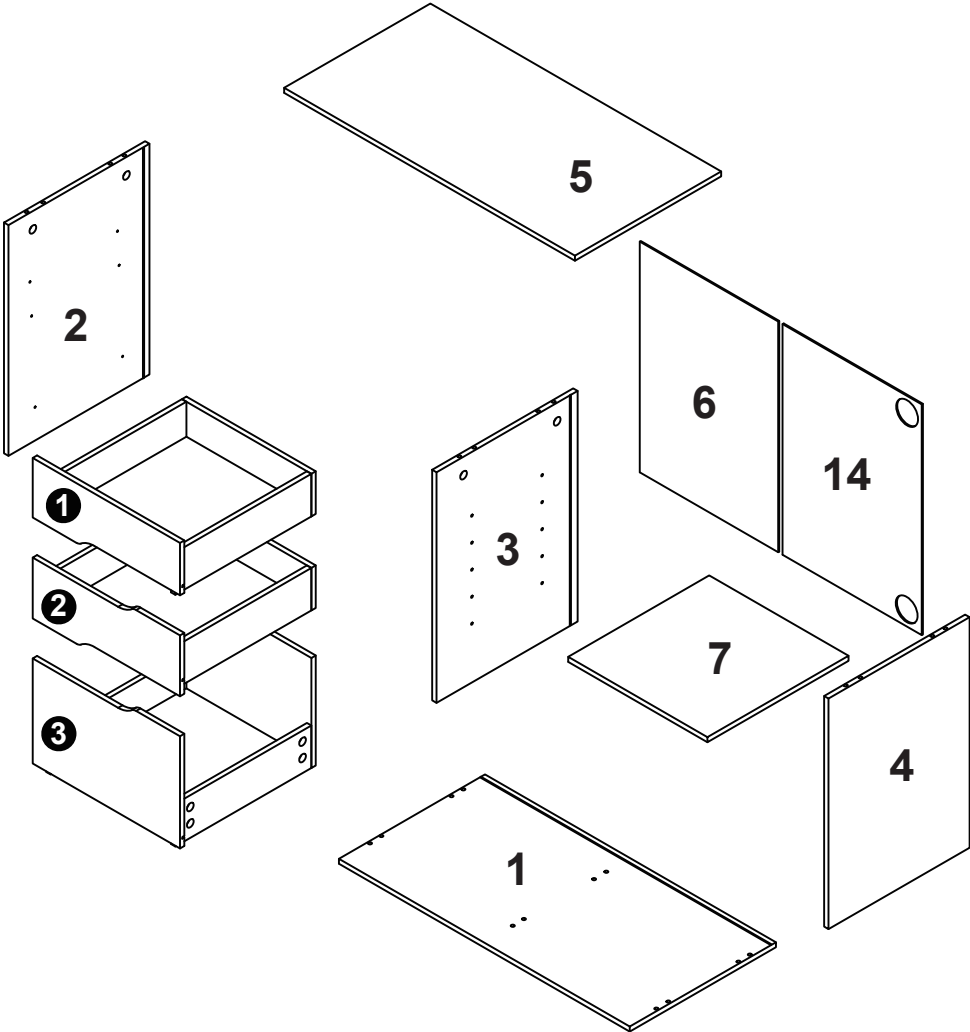


 EST 9:00AM--17:00PM

 HJ-Customer-Service@outlook.com

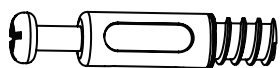
 (909)637-7665 | (909)637-7593

# Mobile Lateral Filing Cabinet



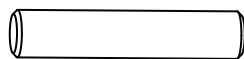
# Package List

**A** X22



Dowel

**B** X12



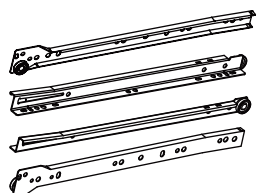
Wooden Dowel

**C** X22



Eccentric Wheel

**D** X2



||



**CL**

+



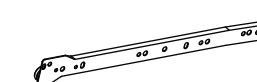
**DL**

+



**DR**

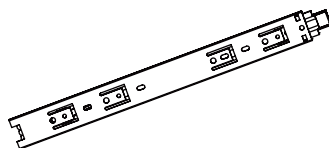
+



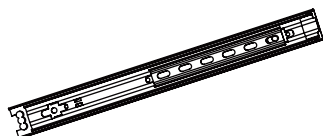
**CR**

Slide Rail

**E** X2

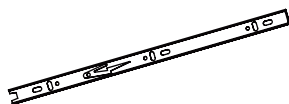


||



**E1**

+



**E2**

Slide Rai

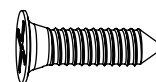
**F** X2



Rod

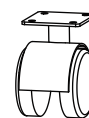
**G** X48

M4x14



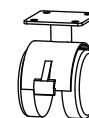
Screws

**H** X2



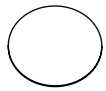
360° Swivel Casters

**I** X2



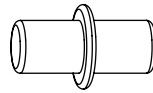
Lockable Casters

**J** X22



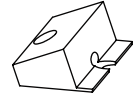
Cover-up Sticker

**K** X4



Shelf Pin

**L** X8



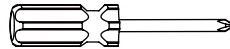
Buckle

**M** X6  
M5x50



Screws

**N** X1



Screwdriver

**O** X2

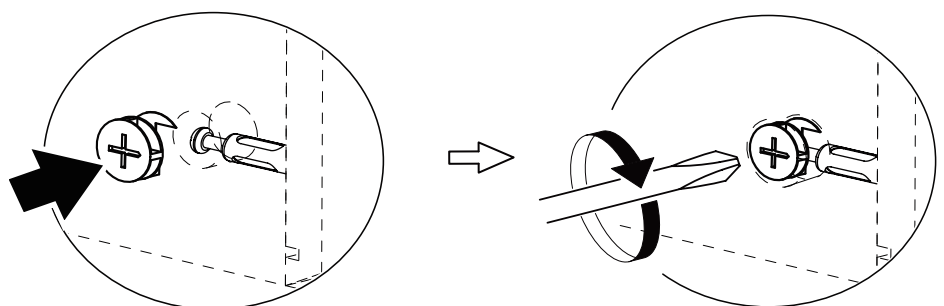
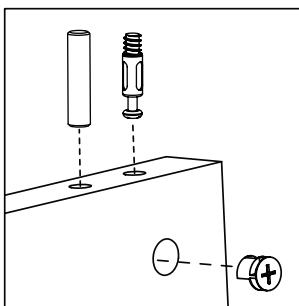
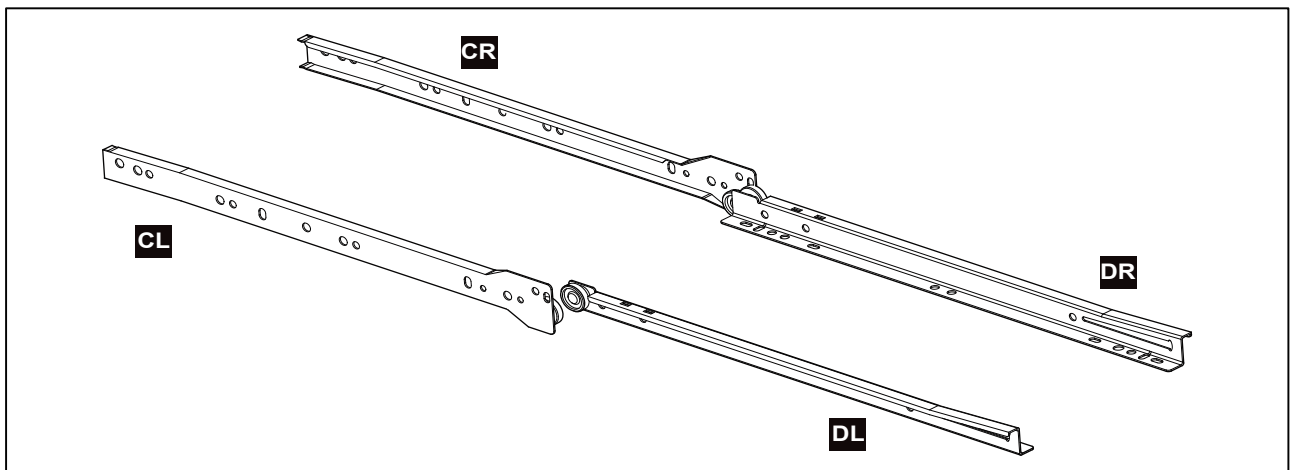


Wire Hole

**P** X8  
M4x30



Screws



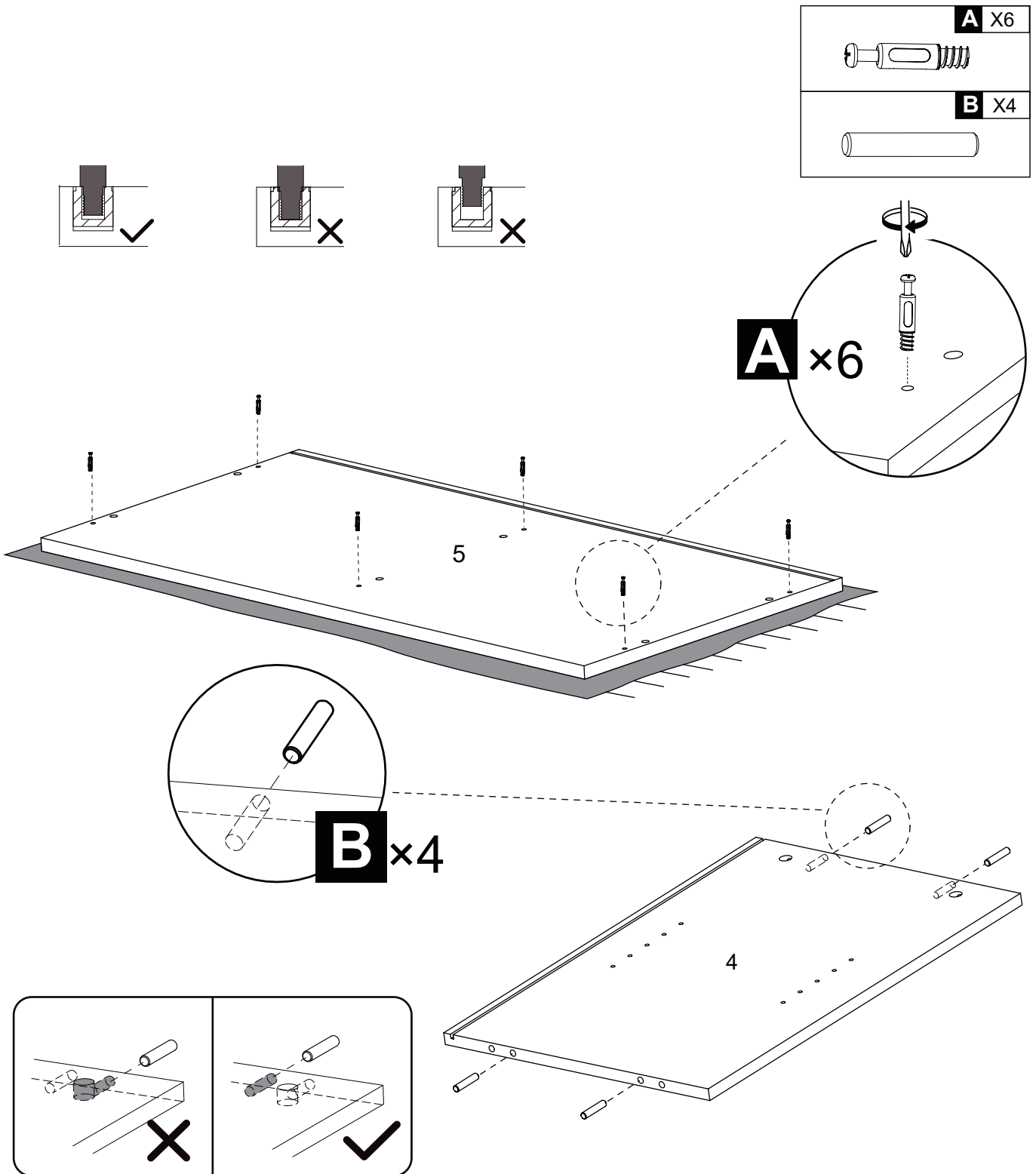
**TIPS:**

As shown, make sure each part is in the correct position.

Make sure the gap of the Eccentric Wheel is aligned with the Dowel, and then tighten it completely.



# Step 1

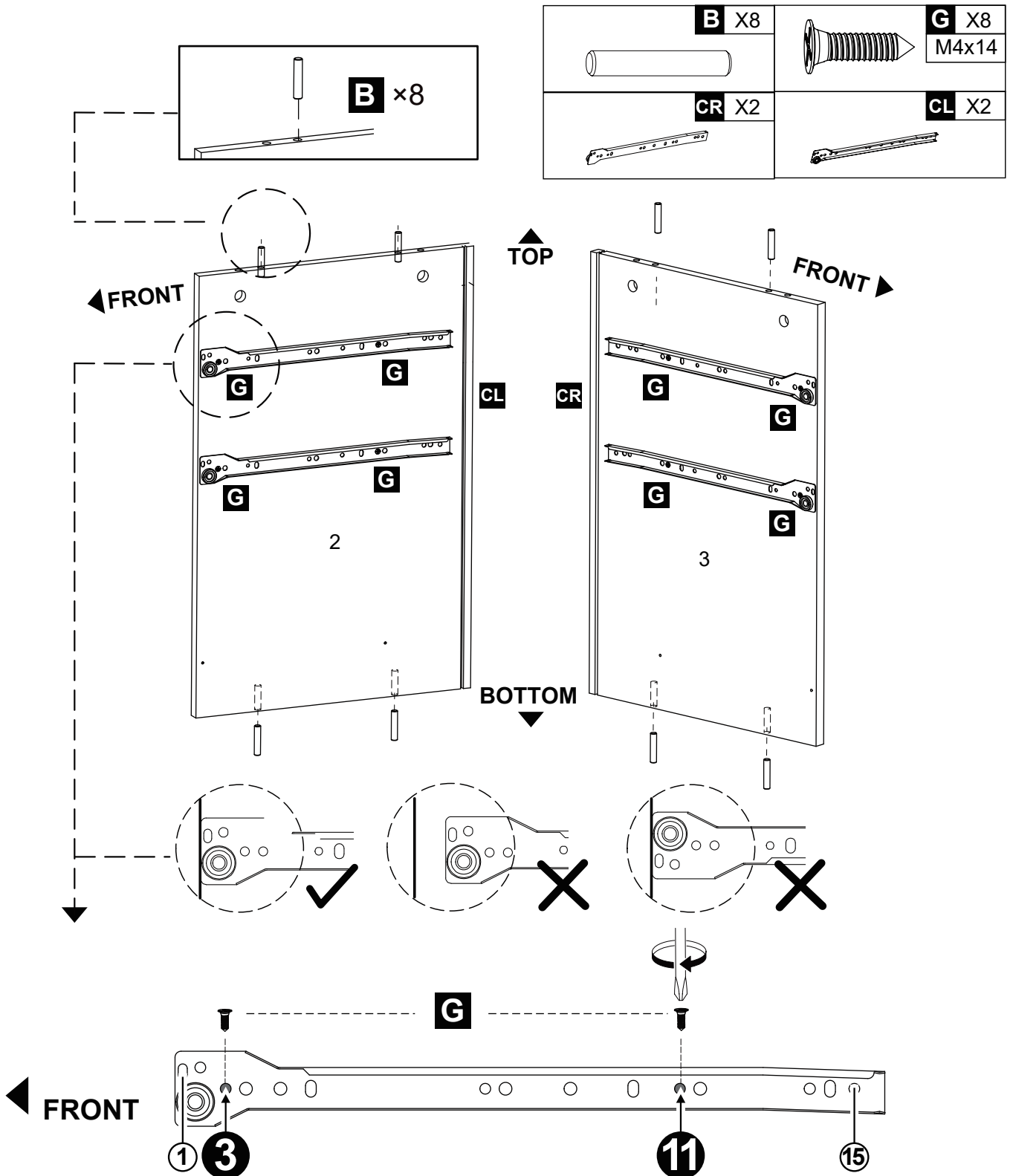


Fix Dowel (A)\*6 to the Board (5). And attach Wooden Dowel (B)\*4 to the Board (4) as shown

## Note:

1. Put a blanket under the Board to avoid scratch or damage.
2. Please do not screw Dowel too deep or too shallow.
3. Make sure the Wooden Dowel is installed in the correct position.

# Step 2

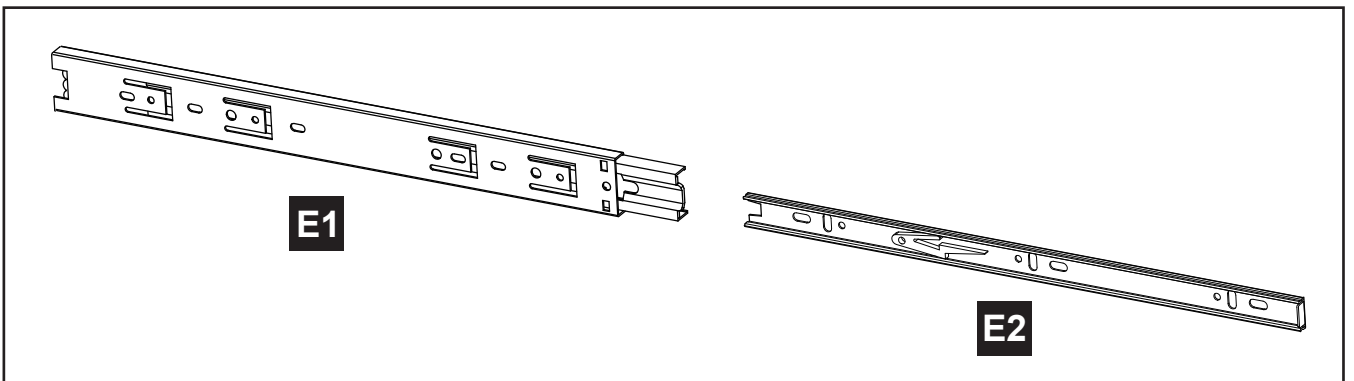
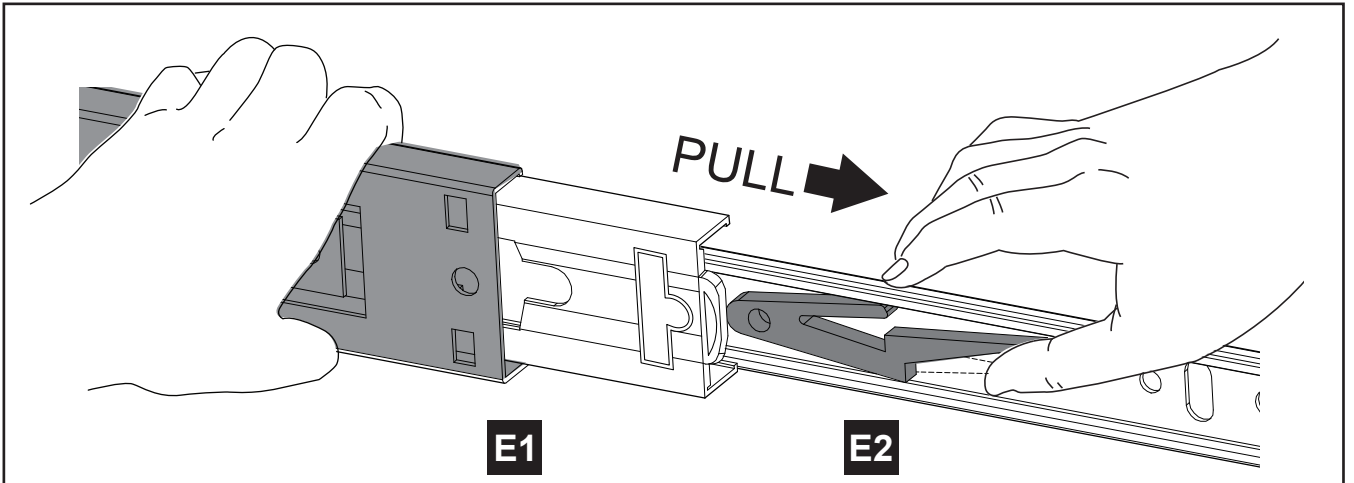
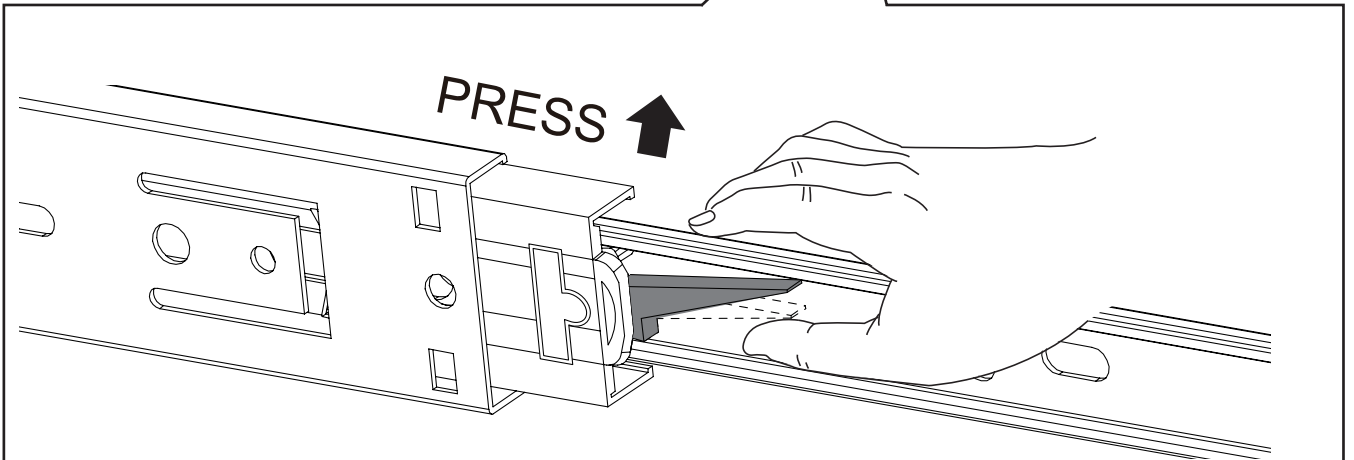
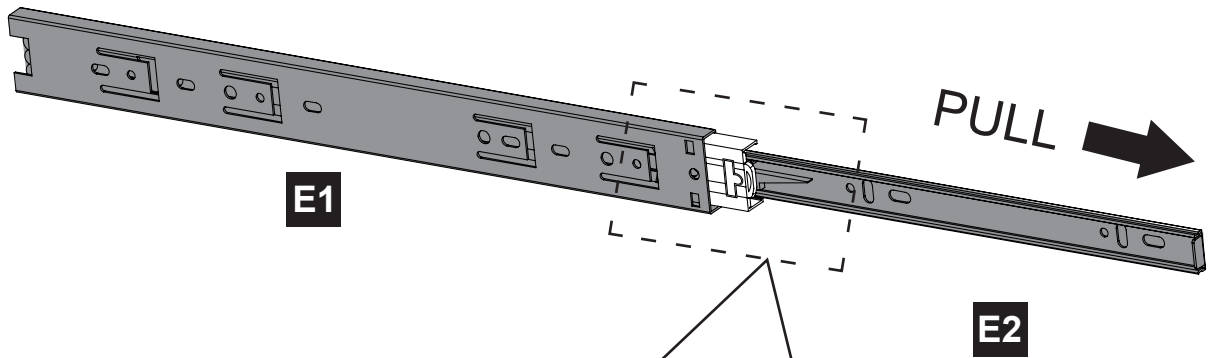


Attach Wooden Dowel (**B**)\*8 to the Boards (**2**&**3**). Attach Slide Rail (**CL**)\*2 to the Board (**2**), and Slide Rail (**CR**)\*2 to the Board (**3**) with Screws (**G**)\*8.

## Note:

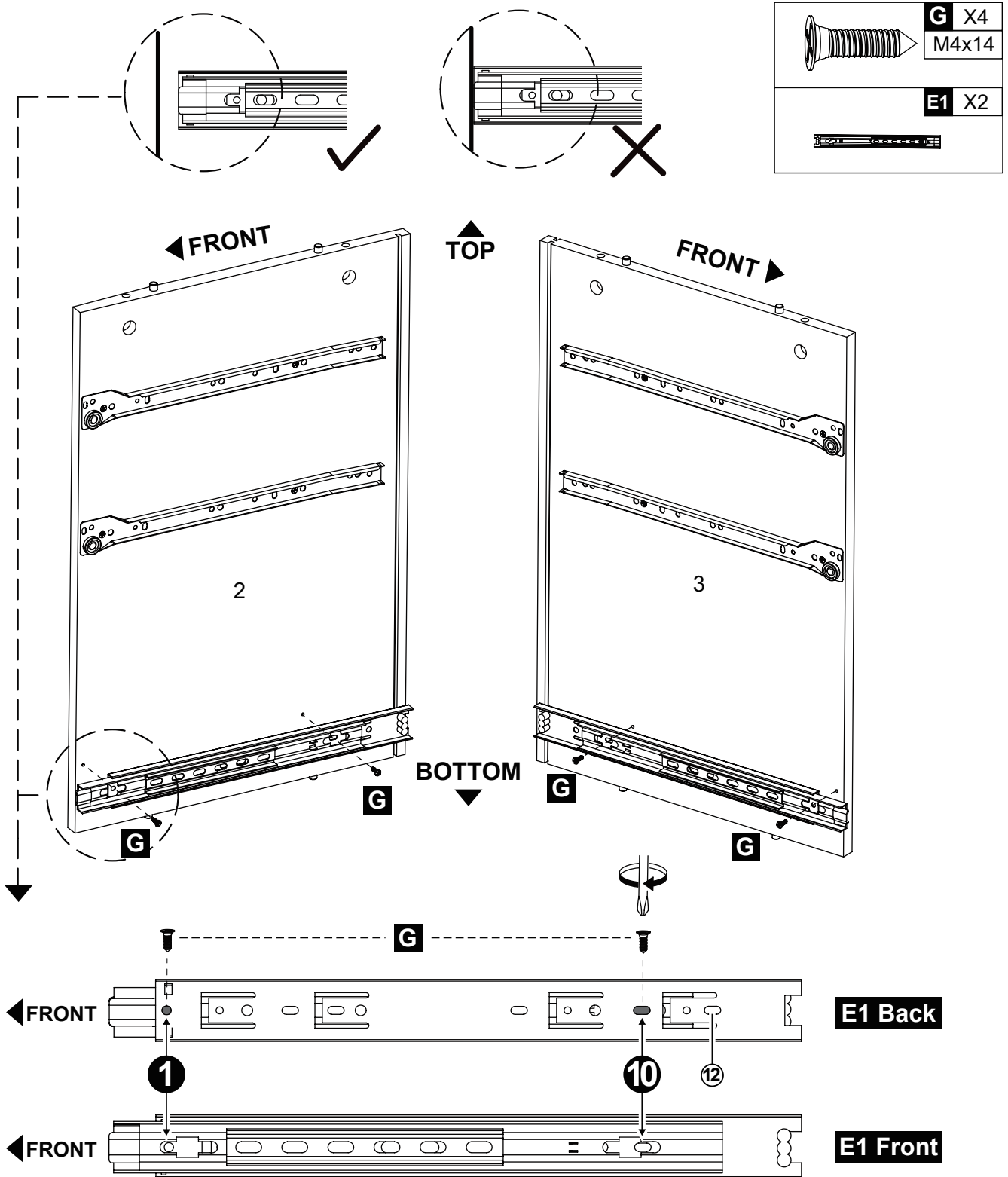
1. As shown, make sure the Board and Slide Rail are oriented correctly.
2. Install the Screws in holes #3 and #11 in this step.
3. When installing, please make sure the Screws are flattened, not crooked. Otherwise the drawers will not be installed perfectly.

# Step 3



As shown, press Slide Rail (**E**) in the indicated direction to separate it into the **E1** and **E2** parts. Please grip the **E1** part while sliding the **E2** part.

# Step 4

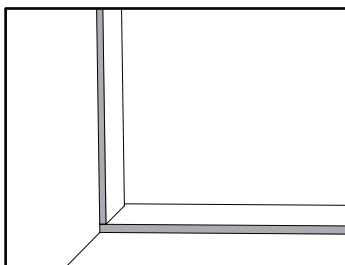
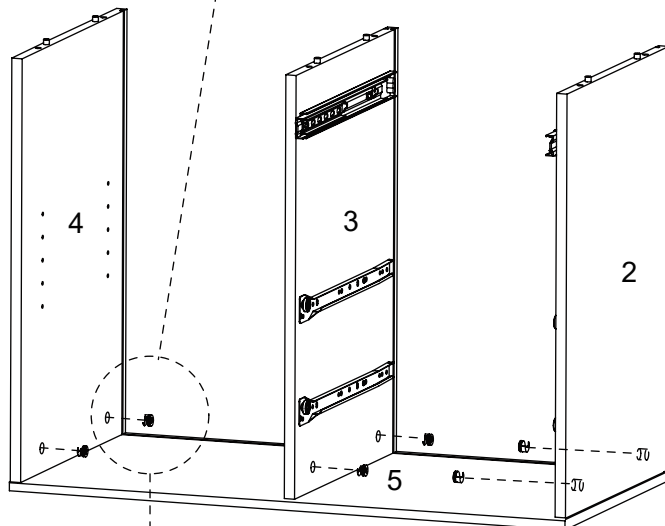
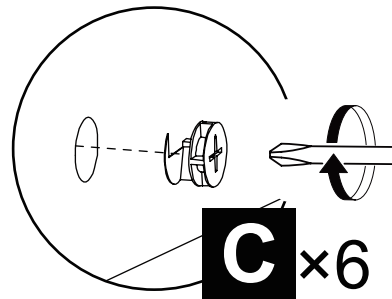
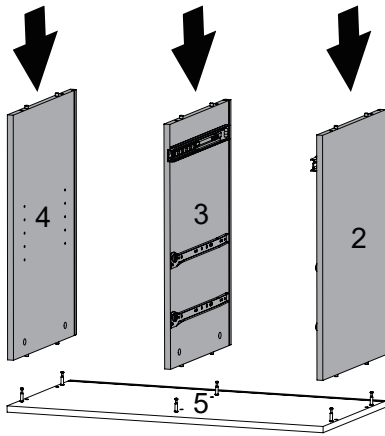
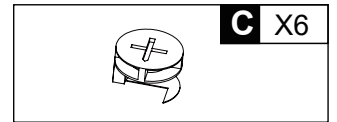


Locate the holes from the back of the Slide Rail (**E1**). Then install Slide Rail (**E1**)\*2 to the Boards (**2&3**) with Screws (**G**)\*4.

## Note:

1. Install the Slide Rail against the rear of the Board.
2. Please install hole #1 first, then hole #10.

# Step 5

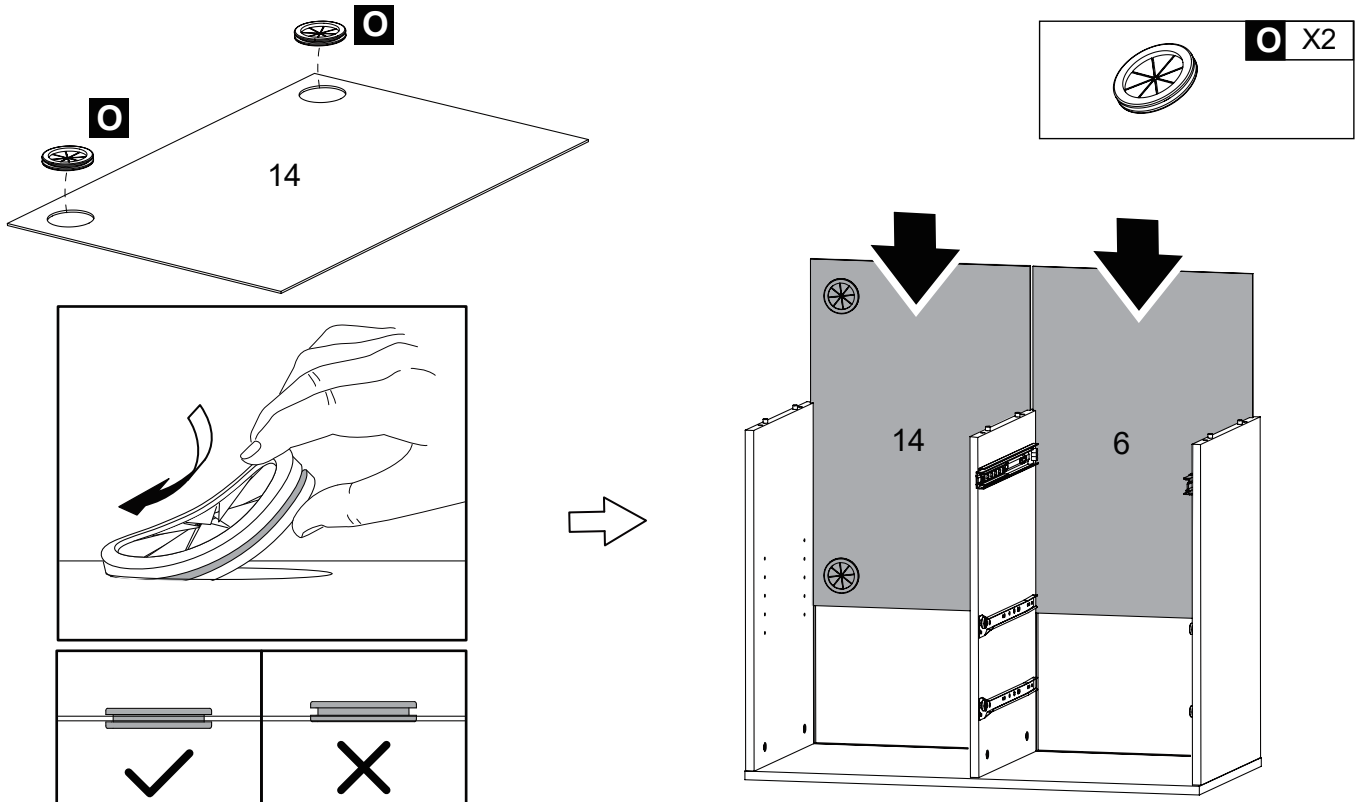


According to the Board position as shown attach Boards **(4&3&2)** to the Board **(5)** with Eccentric Wheel **(C)\*6**.

## Note:

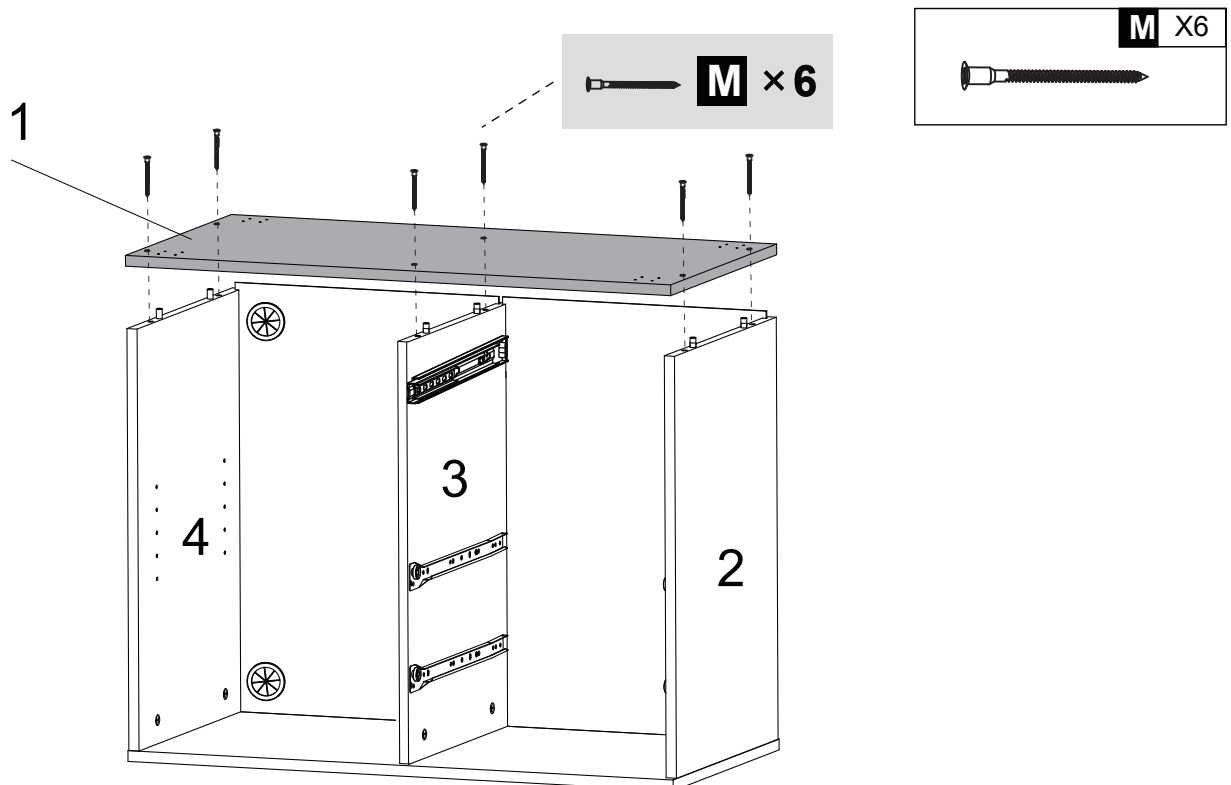
Connect the grooves on the Boards **(4&3&2)** to the grooves on the Board **(5)**.

## Step 6



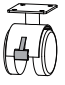
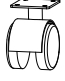
Attach Wire Hole (O)\*2 completely to the Board (14). Insert the Boards (14&6) into the grooves of the Boards (2&3&4).

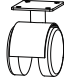

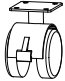
## Step 7



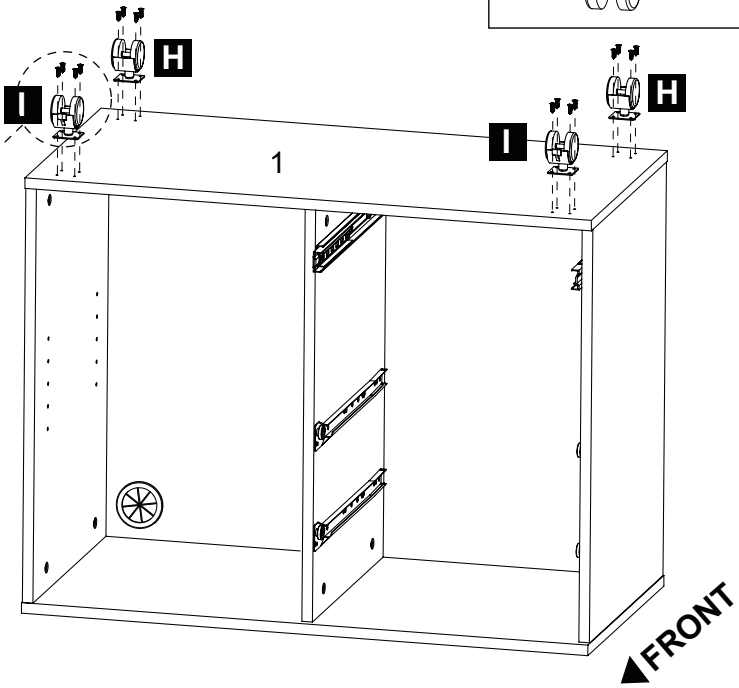
Attach Board(1) to the Boards(2&3&4) with Screws(M)\*6.

# Step 8

<b>I</b>		Lockable casters
<b>H</b>		360° Swivel Casters


	<b>H</b> X2		<b>G</b> X16 M4x14
	<b>I</b> X2		

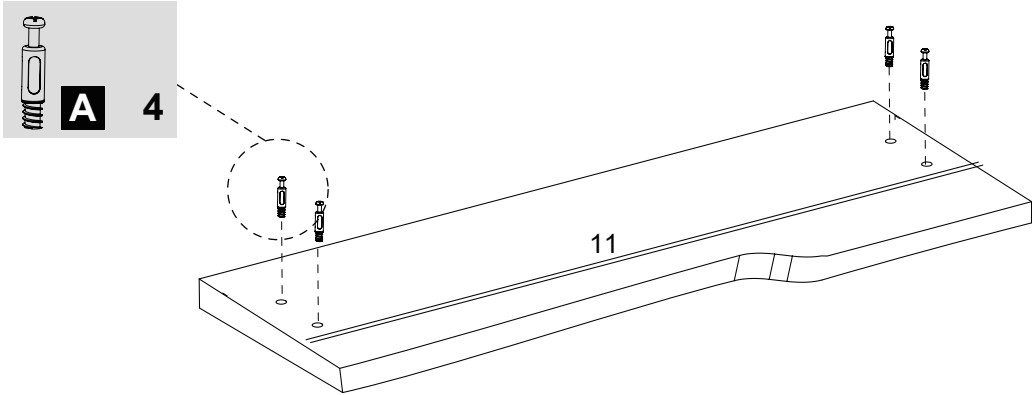
	<b>G</b> X16
---	--------------



Attach Lockable Casters (**I**)\*2 to the front side of the Board (**1**) and 360° Swivel Casters (**H**)\*3 to its back side with Screws (**G**)\*16.

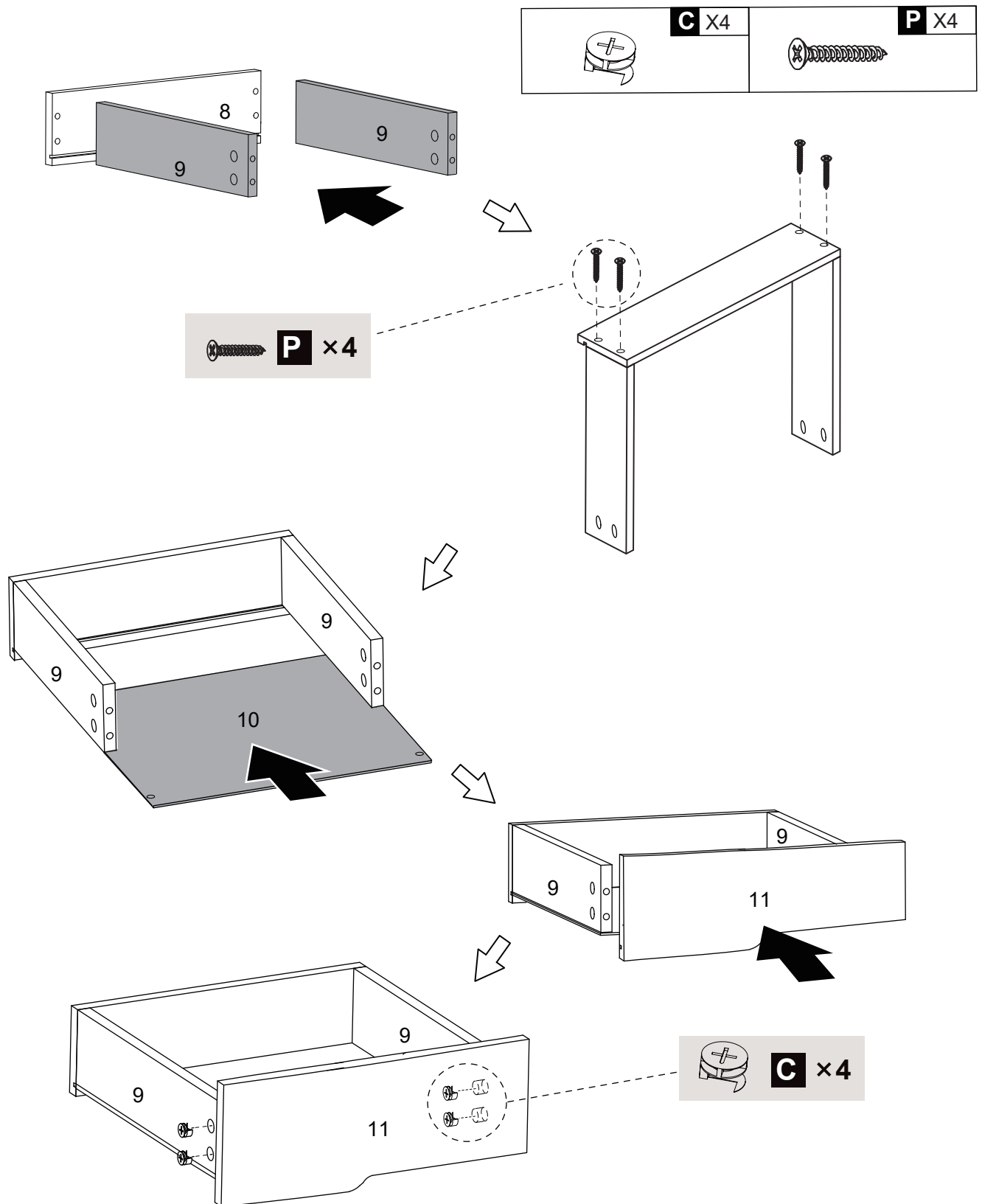
# Step 9

	<b>A</b> X4
---	-------------



Fix Dowel (**A**)\*4 to the Boards (**11**).

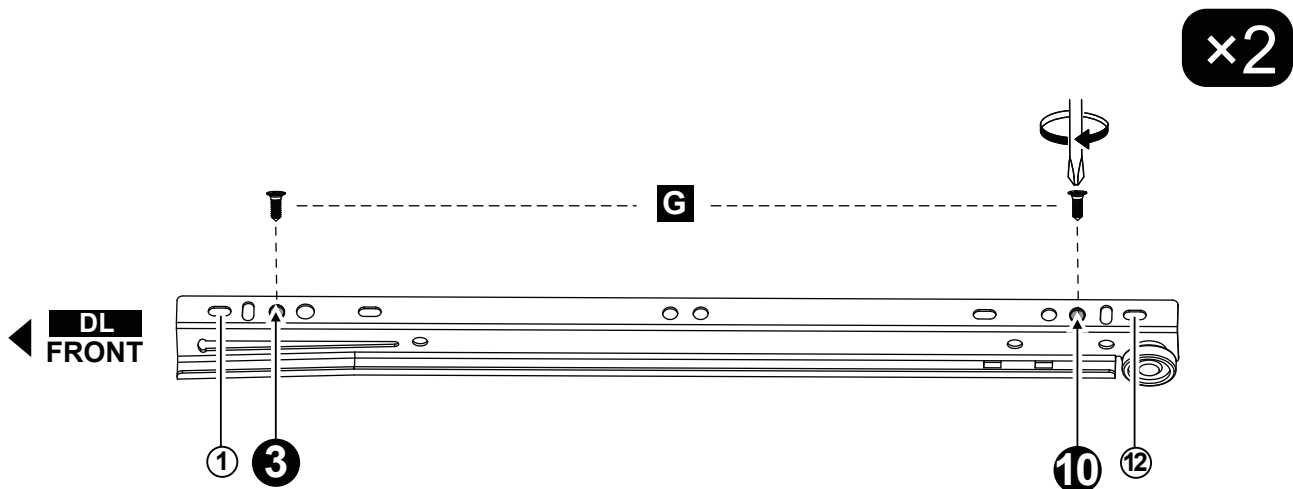
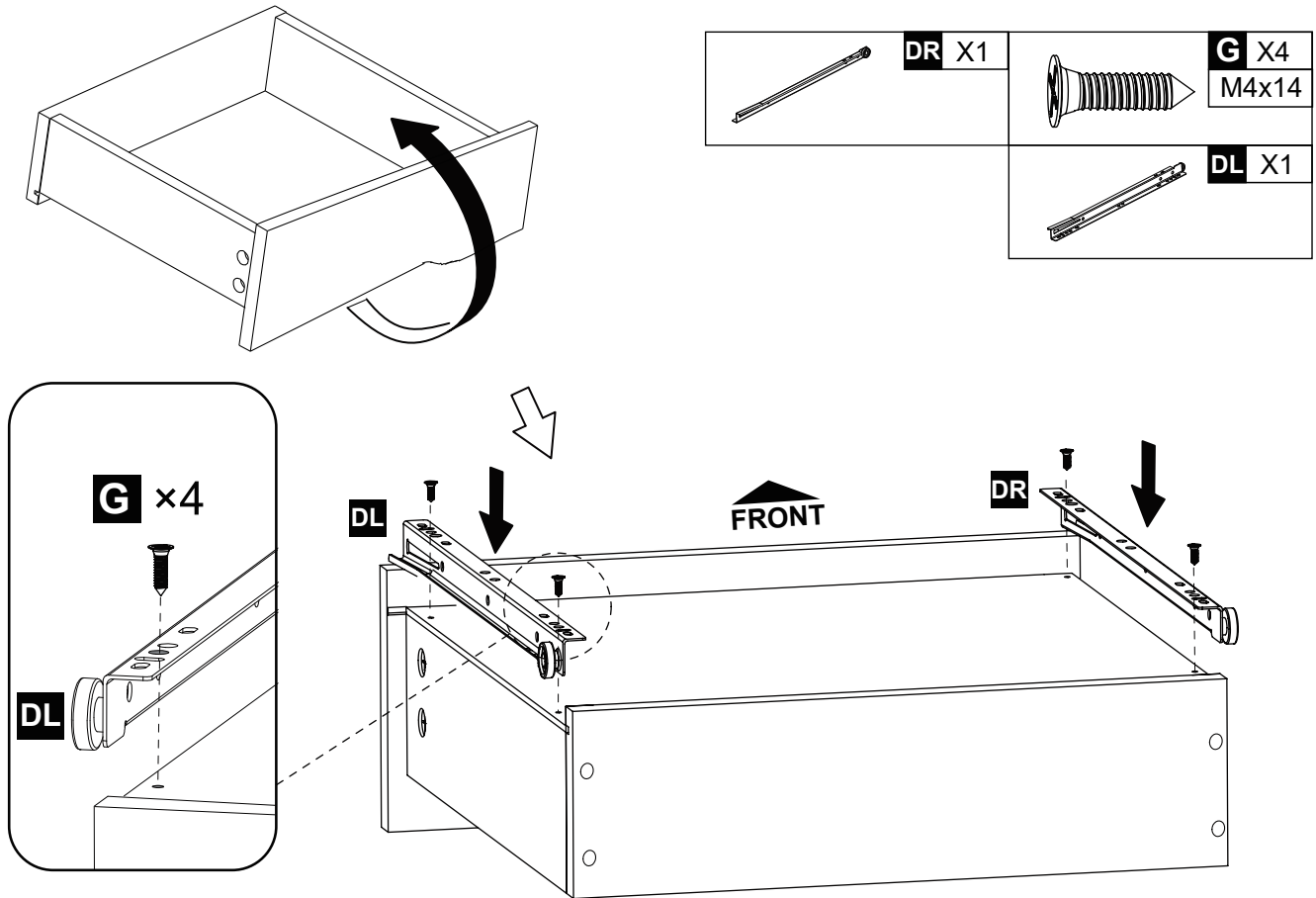
# Step 10



Fix Board(9)\*2 to both sides of the Board(8)with Screws(P)\*4 and slide the Board (10) into the installed Board groove. Then fix Board (9)\*2 to both sides of the Board(11)with Eccentric Wheel(C)\*4



# Step 11

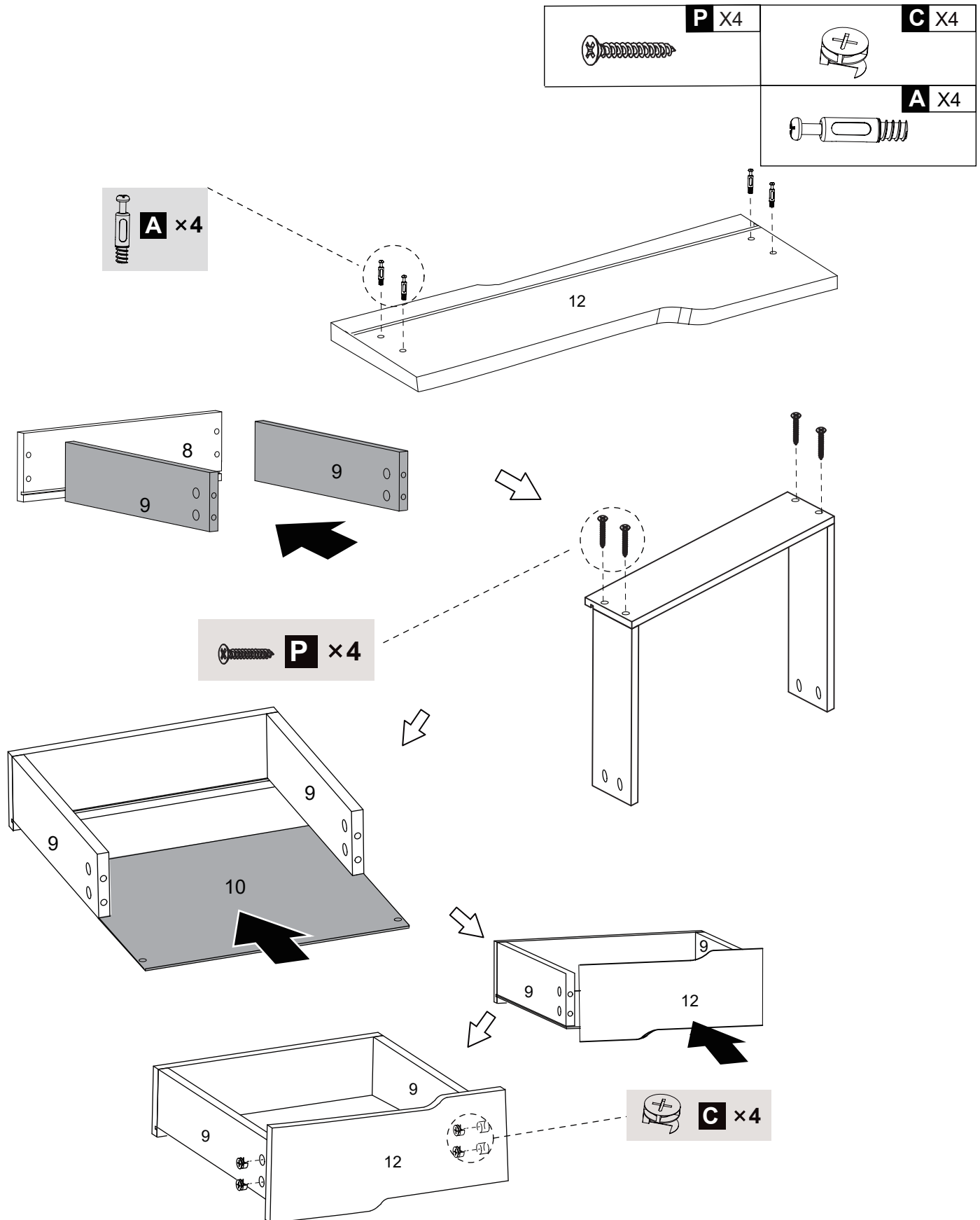


Turn the installed Drawer over. Attach Slide Rails (**DL&DR**) to the Boards (**9**)\*2 on each side of the drawer with Screws (**G**)\*4.

## Note:

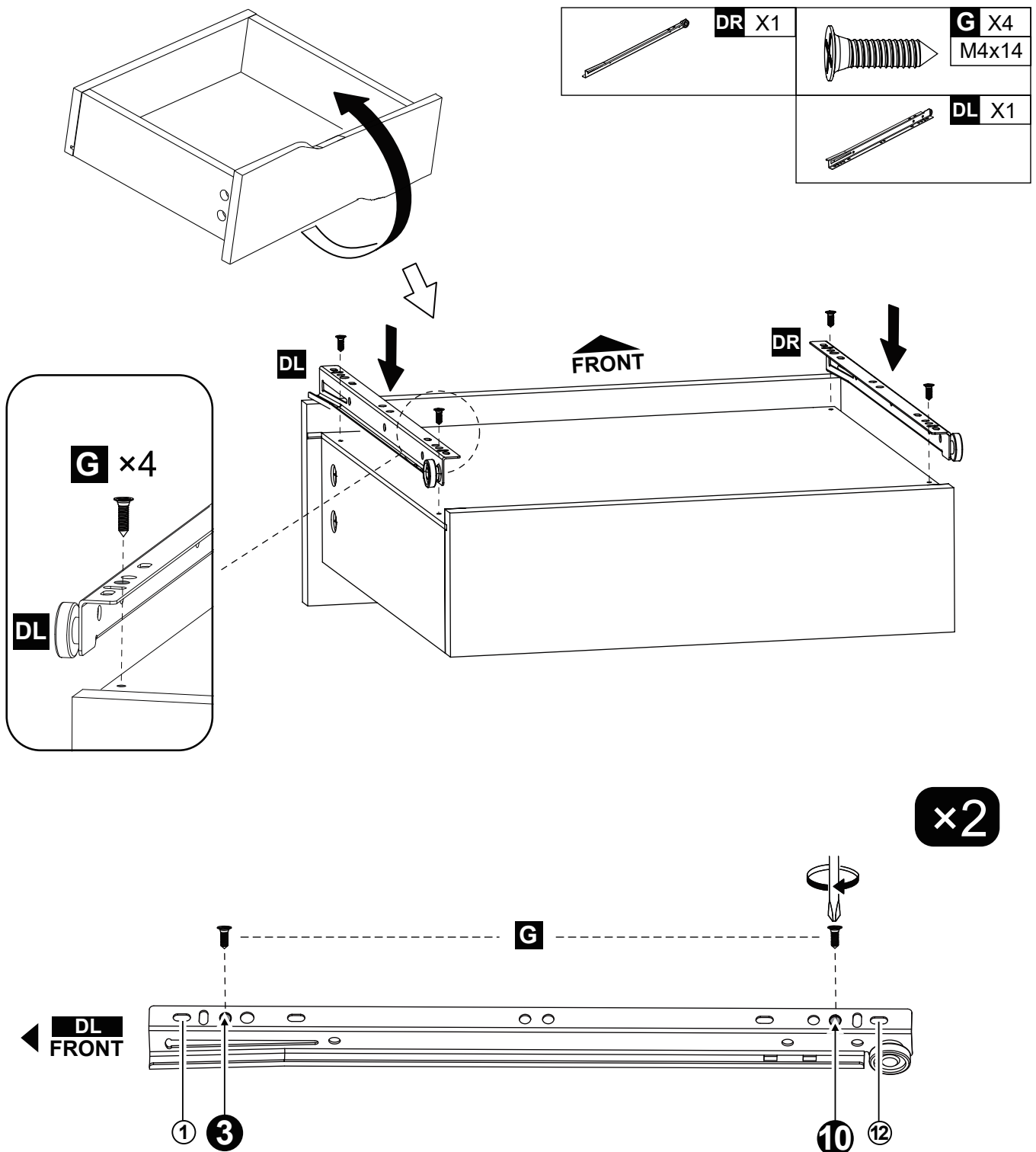
1. According to the "**FRONT**" of the Drawer, distinguish the left and right side of the Slide Rail.
2. Install the Slide Rail against the Board (**11**).
3. Install the Screws in holes **#3** and **#10** in this step.

# Step 12



Fix Dowel(A)\*4 to the Boards(12). Fix Board(9)\*2 to both sides of the Board(8) with Screws(P)\*4, and slide the Board(10) into the installed Board groove. Then fix Board (9)\*2 to both sides of the Board(12) with Eccentric Wheel(C)\*4.

# Step 13

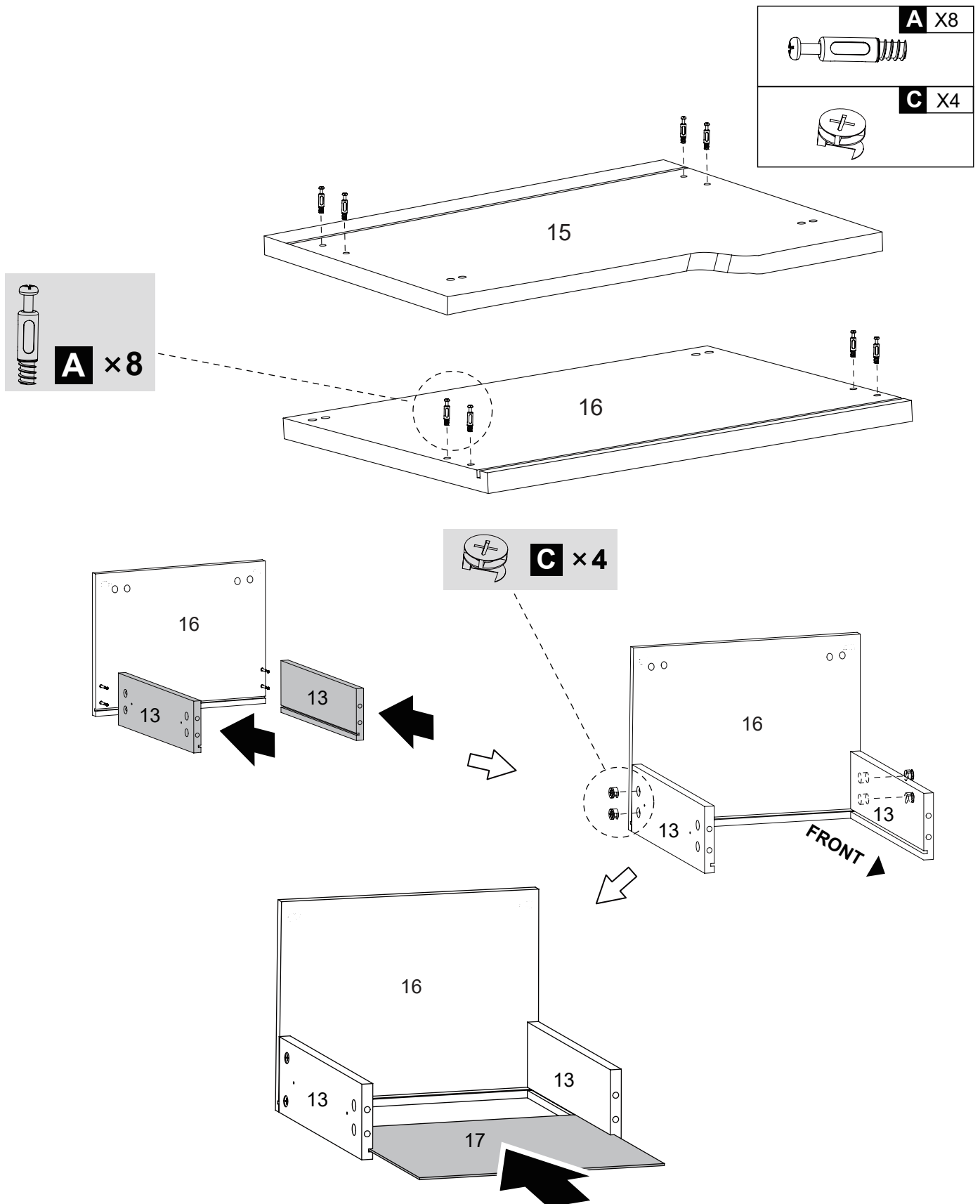


Turn the installed Drawer over. Attach Slide Rails (**DL&DR**) to the Boards (**9**)\*2 on each side of the drawer with Screws (**G**)\*4.

## Note:

1. According to the "**FRONT**" of the Drawer, distinguish the left and right side of the Slide Rail.
2. Install the Slide Rail against the Board (**12**).
3. Install the Screws in holes **#3** and **#10** in this step

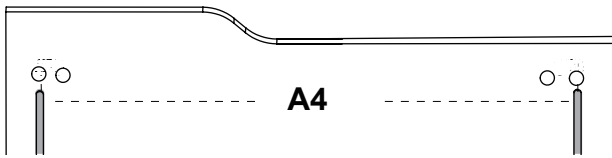
# Step 14



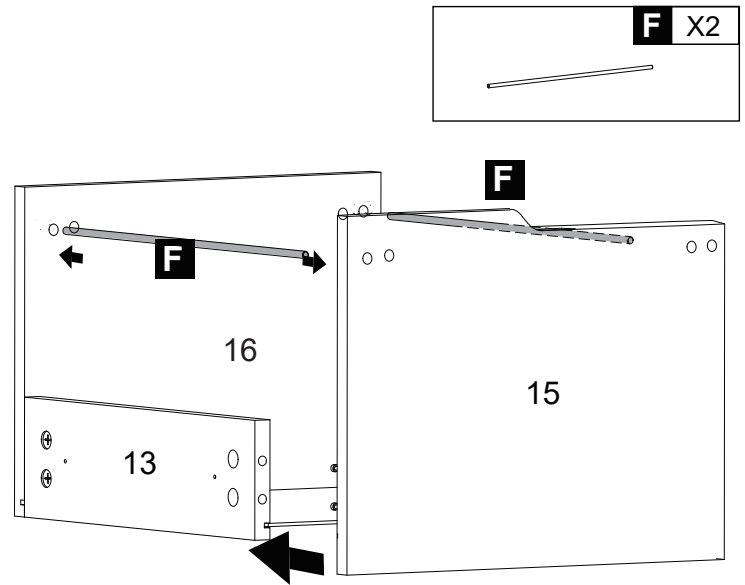
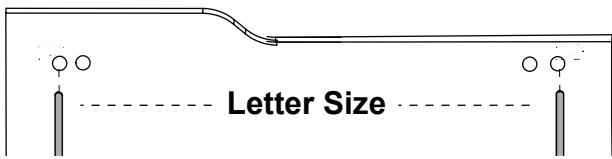
Fix Dowel **(A)\*8** to the Boards **(15&16)**. Fix Board **(13)\*2** to both sides of the Board **(16)** with Eccentric Wheel **(C)\*4**, and slide the Board **(17)** into the installed Board groove.

## Step 15

(1)



(2)

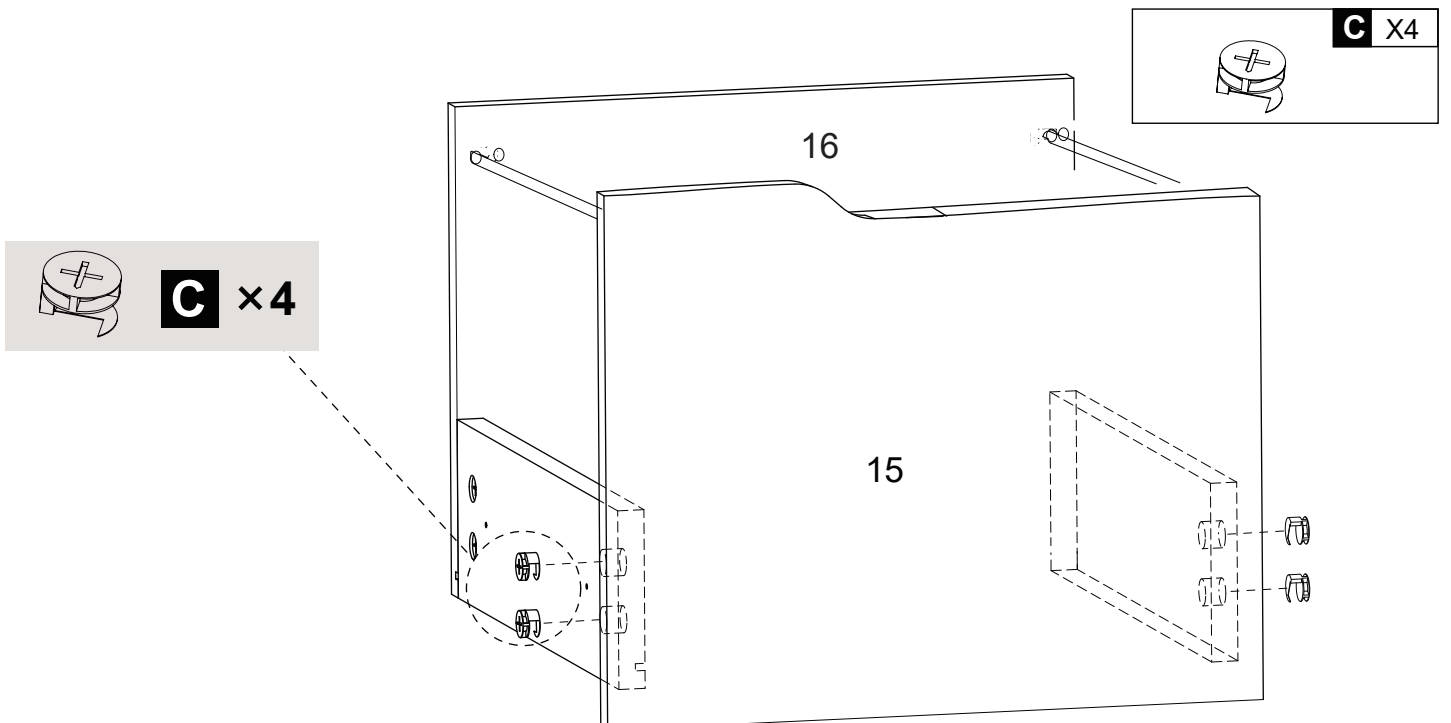


Insert the Rod **(F)\*2** into the hole of the Boards **(15&16)** to secure them.

As shown in Fig. **(1)** installation method, the A4 Size file can be hung after installation.

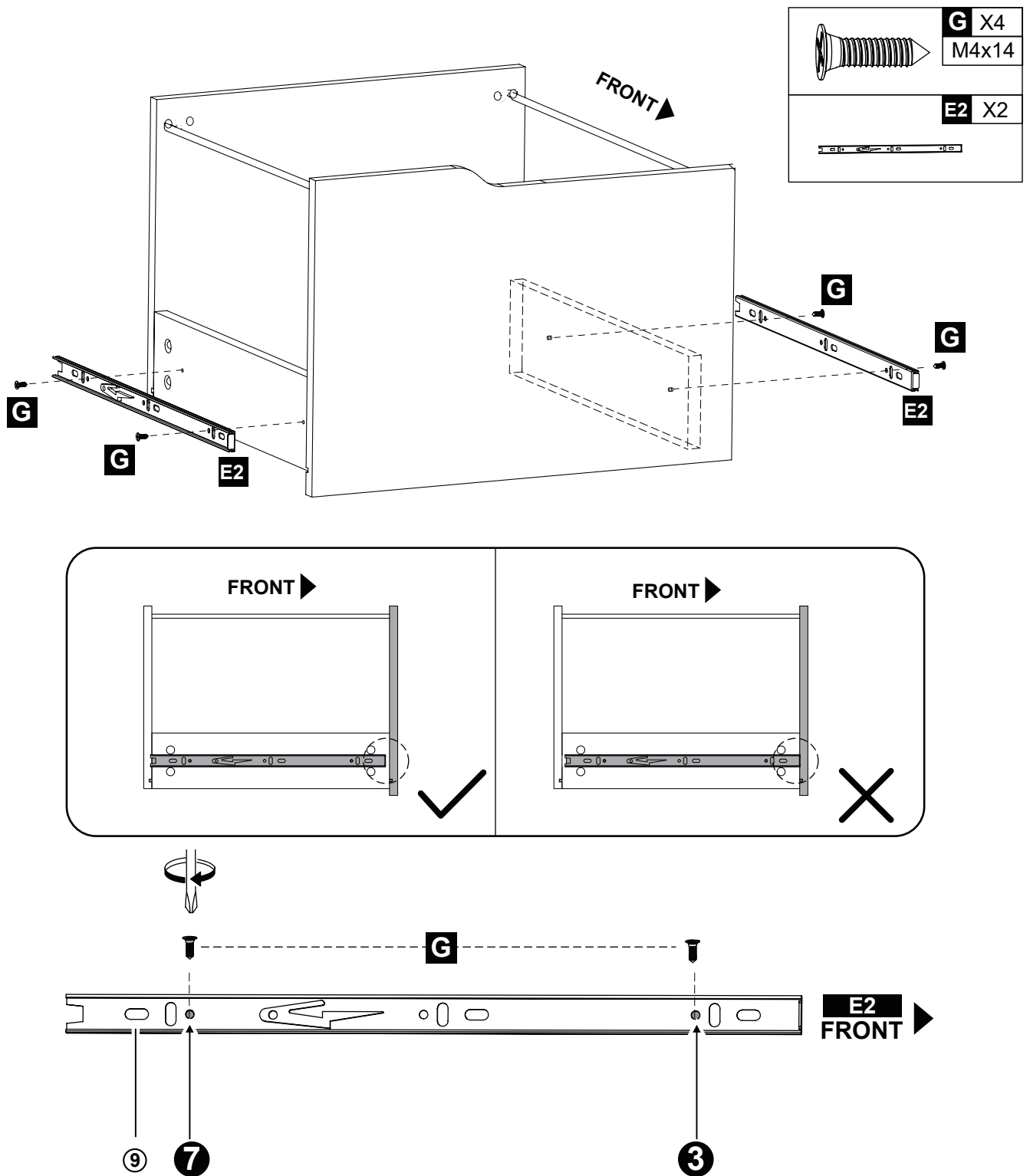
As shown in Fig. **(2)** installation method, the Letter Size file can be hung after installation.

## Step 16



Fix Board **(13)\*2** to both sides of the Board **(15)** with Eccentric Wheel **(C)\*4**.

# Step 17

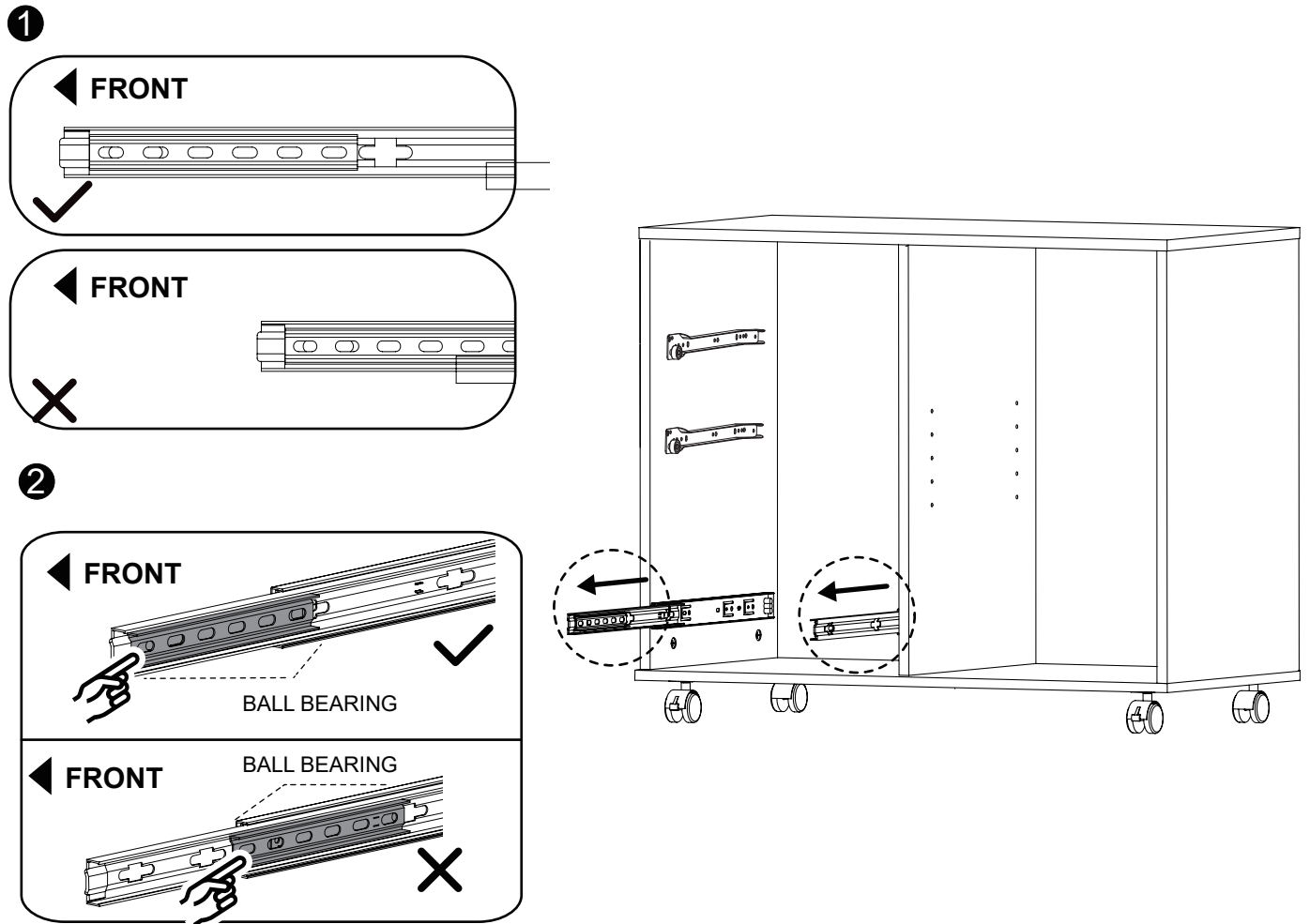


Attach Slide Rail (**E2**)\*2 to the Board (**13**)\*2 on both sides of the Drawer with Screws (**G**)\*4.

## Note:

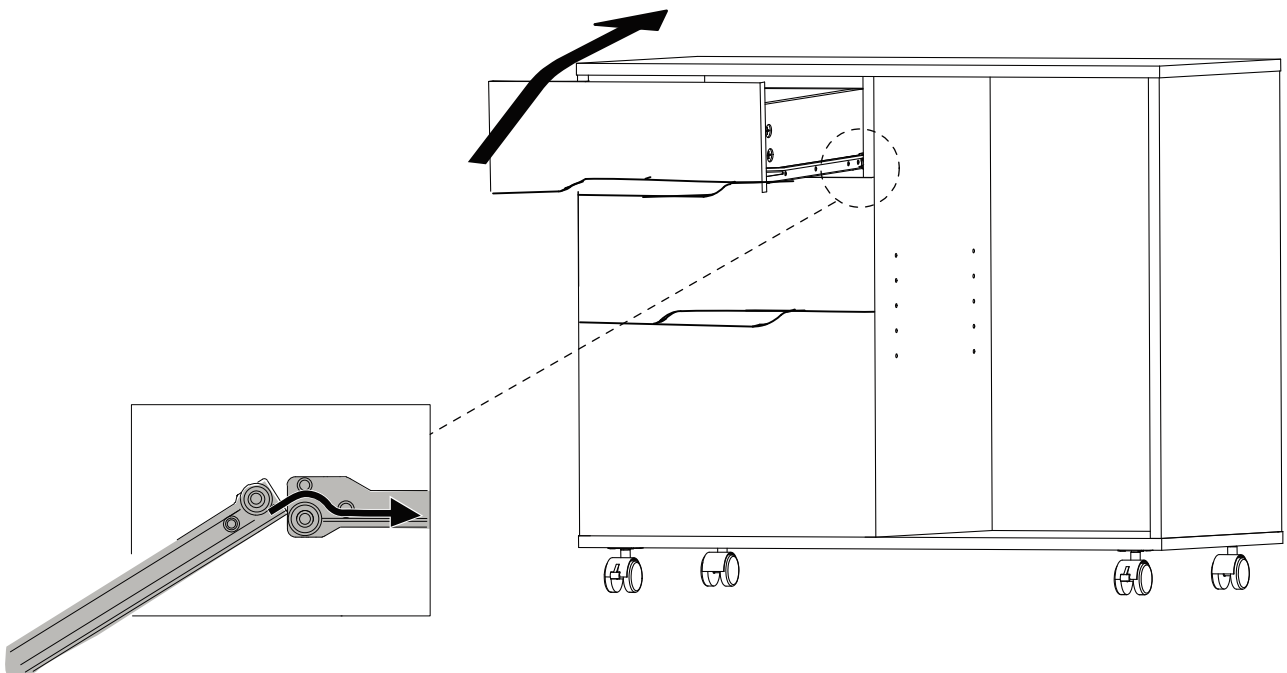
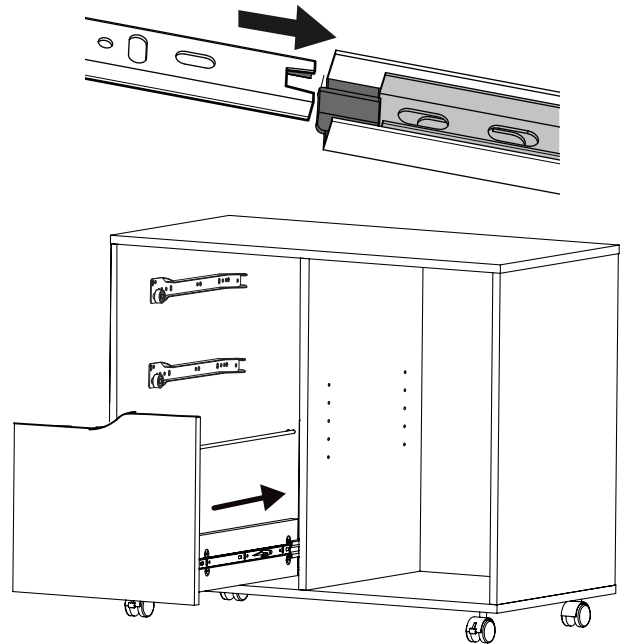
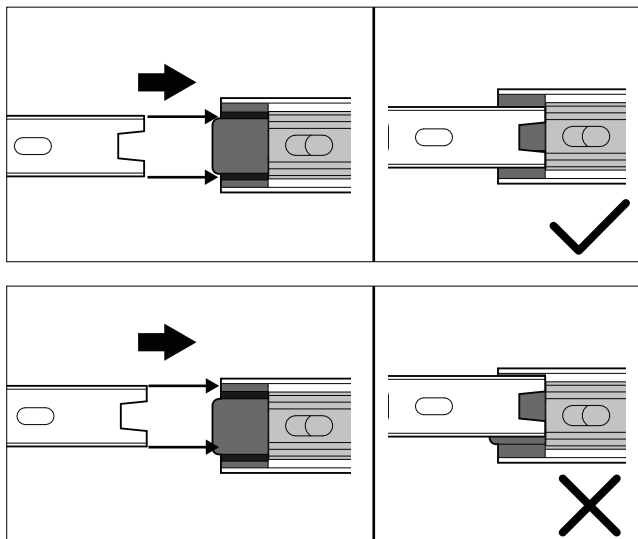
1. Make sure the Slide Rail is oriented correctly.
2. Install the Slide Rail against the Board (**16**).
3. Install the Screws in holes **#3** and **#7** in this step.

# Step 18



Please full extend the Slide Rail **(E1)\*2**. Simply push the Ball Bearing cart all the way to the end of the slide.

# Step 19



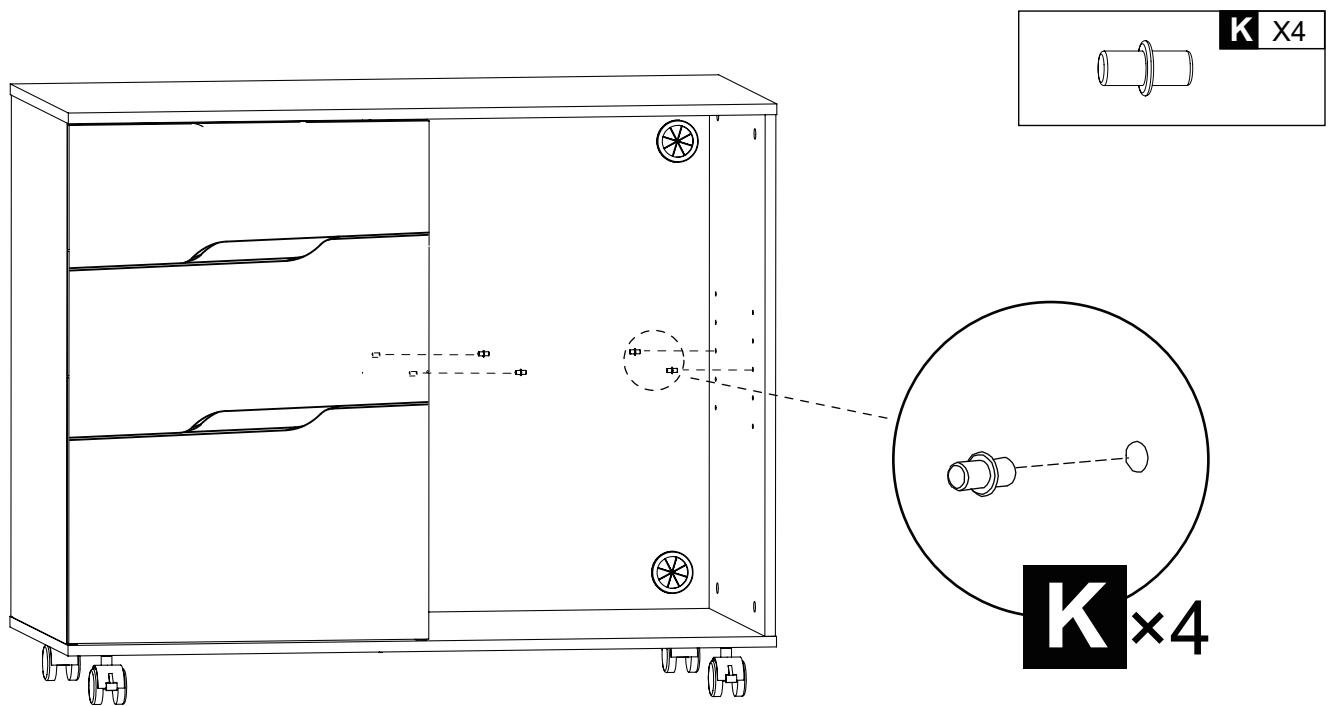
Align the Slide Rail on the Drawer with the unit and push it carefully inside until it stops.

## Note:

If the drawer does not go in smoothly please take it out and repeat the step.

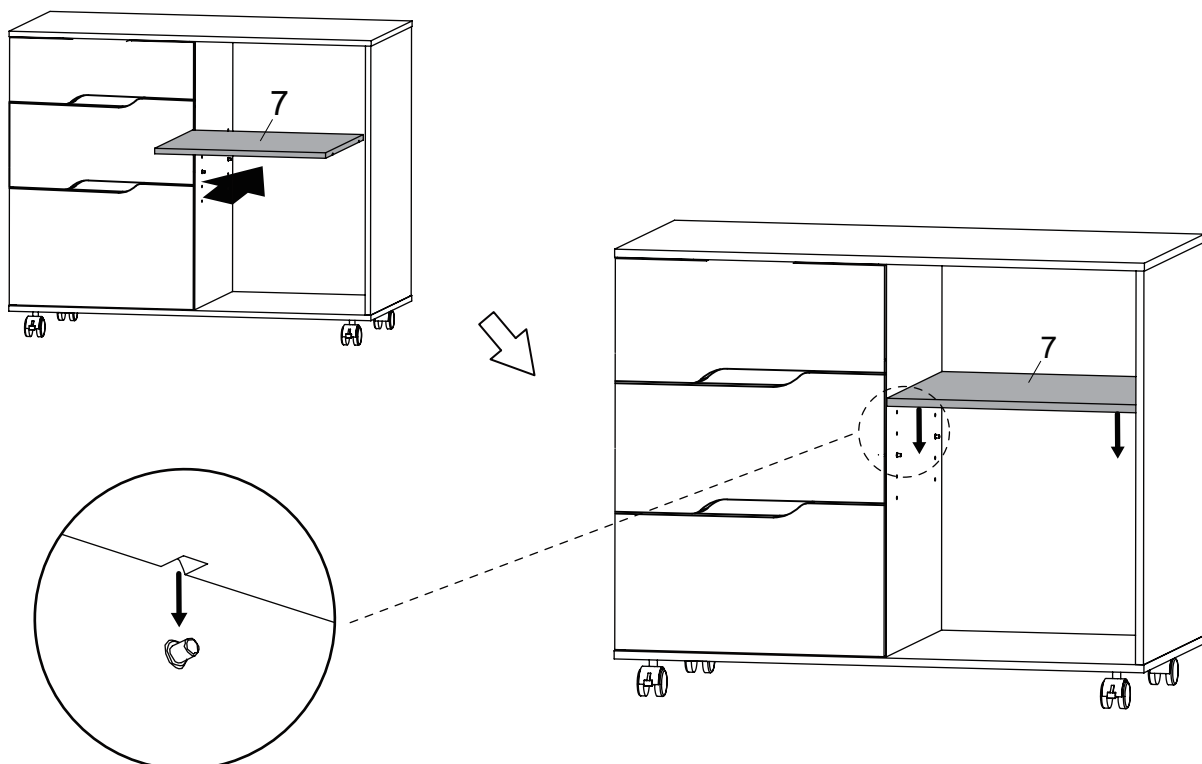


## Step 20



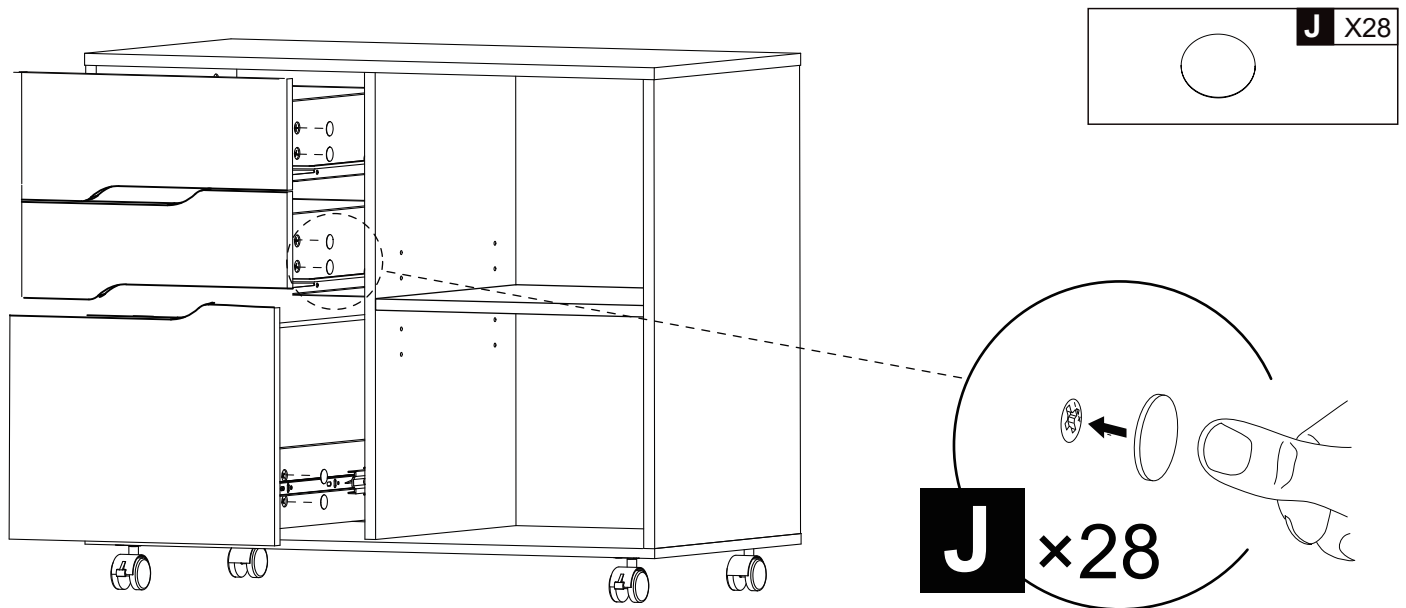
Attach Shelf Pin (K)\*4 to the Boards (3&4).

## Step 21



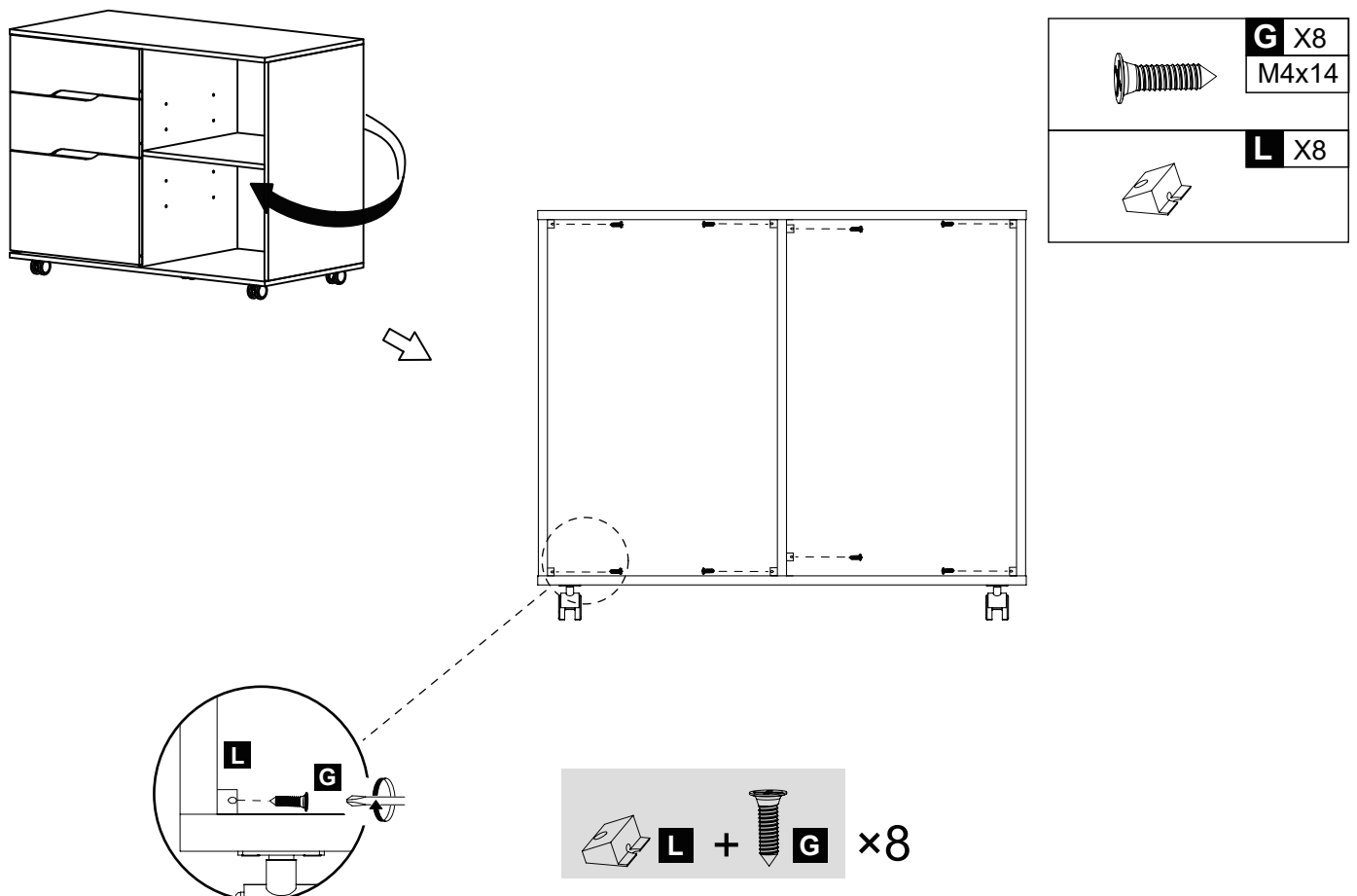
Put the Board (7) into it, make the groove on Board (7) match with the Shelf Pin (K).

## Step 22

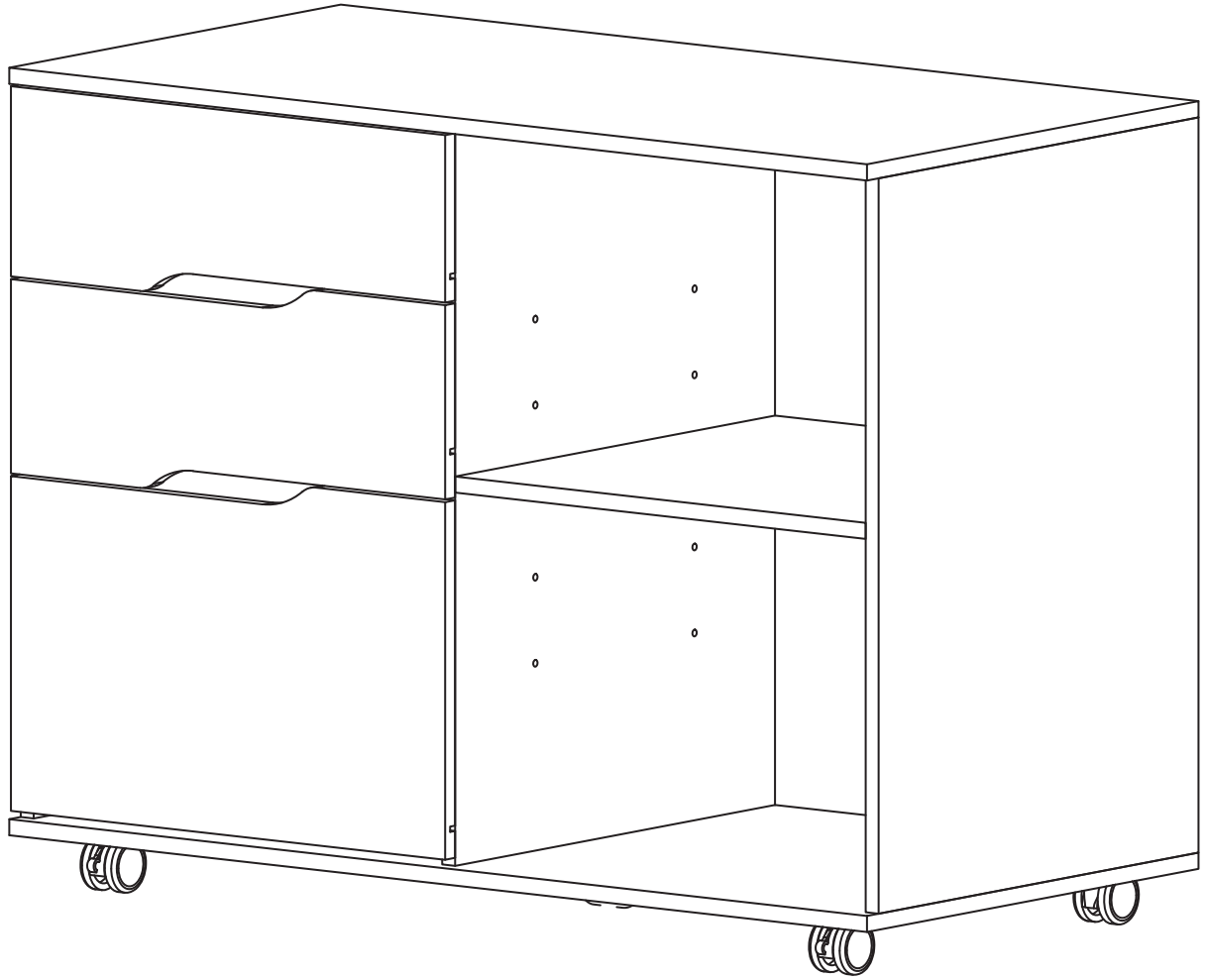


Using Cover-up Sticker (**J**)\*28 to cover the exposed part of Screws.

## Step 23



As shown, fix Buckle (**L**)\*8 on the back of the installed Mobile Lateral Filing Cabinet with Screws(**G**)\*8.



## Technical Support

(909)637-7665 | (909)637-7593

## Other Info

[HJ-Customer-Service@outlook.com](mailto:HJ-Customer-Service@outlook.com)

Thank you for choosing this product. We strive to provide you with the best quality products and service in the industry. Should you have any issues, please don't hesitate to contact us.