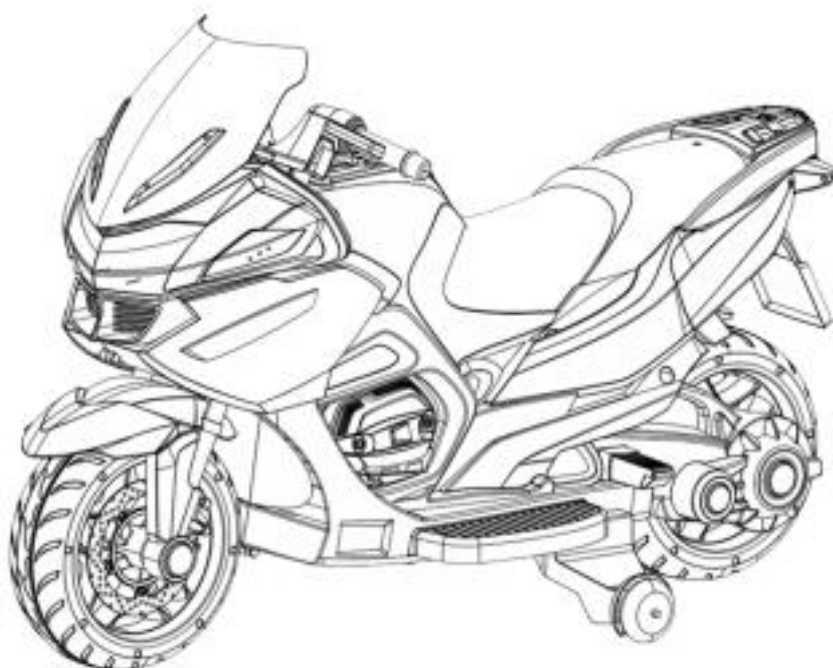


## Owner's Manual

### Thanks for choosing our Product- **ELECTRIC MOTORCYCLE**

**Please carefully read this manual before use and keep for future reference.**



#### **WARNING**

- Must be assembled by an adult!
- Read and understand this entire manual before using!
- Before first time use, charge the battery for at least 4-6 hours.
- Please keep this manual well for reference in the future.
- The toy should be used with caution since skill is required to avoid falls or collisions causing injury to the user or third parties.

**Warning: Not to be used in traffic !**

# **Table of Contents**

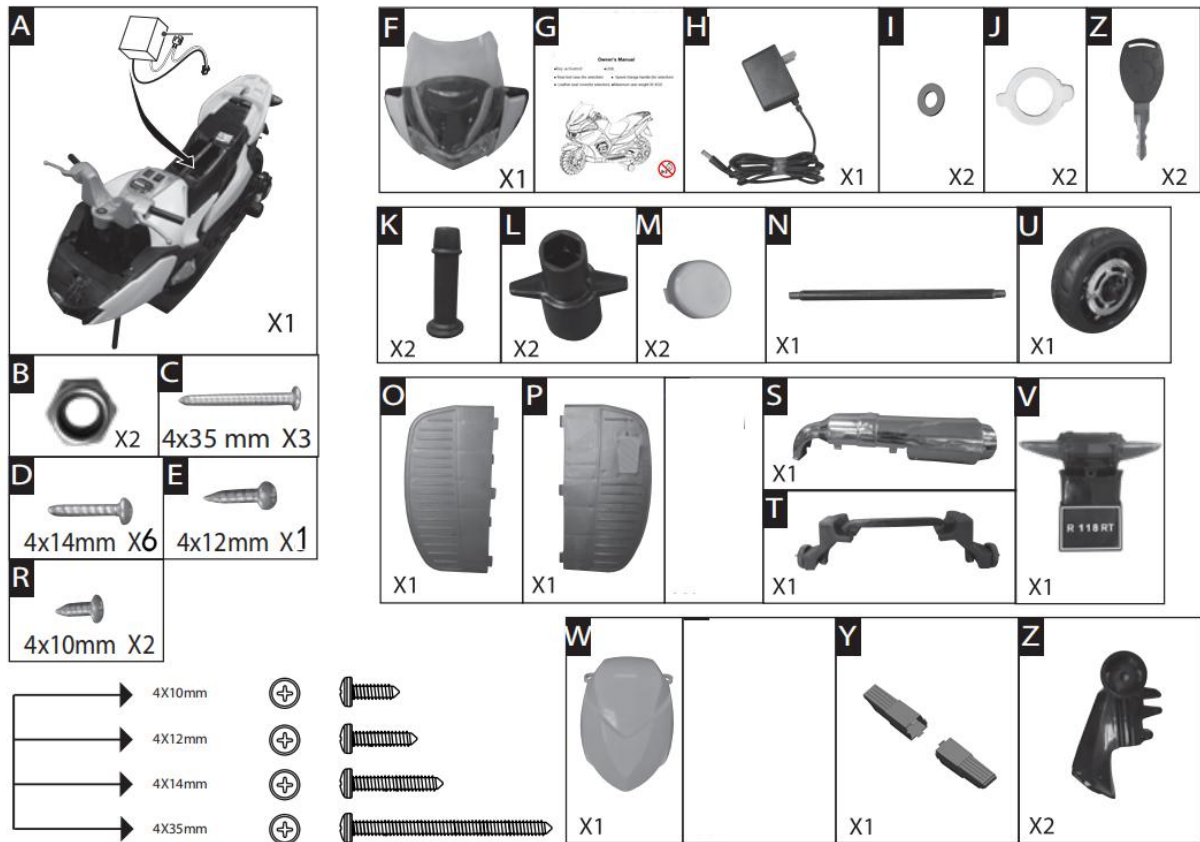
- 1.Specification
- 2.Structure chart
- 3.Assembly steps
- 4.How to operate your “Ride on”
- 5.How to use Controller
- 6.Charging the battery
- 7.Trouble shooting guide
- 8.Maintaining your “ride on”
- 9.Wiring diagram
- 10.Disclaimer

## **1.SPECIFICATION**

Age for: 37-95months	Max weight capacity:35kgs
Battery:12V 4.5Ah*1	Vehicle size:120*60*65cm
Charge time:8-12 hours	Speed:3 km/h
Charger:Input: According to local voltage;Output: DC12V 500MA	
Motor: 12V 35W*1	

- One click Start
- Maximum user weight:35 KGS
- Rear tool case (for selection)
- Speed change handle (for selection)
- Leather seat cover(for selection)
- Alarm Light ( for selection)

## 2. Structure chart



## 3. Assembly Steps

### Assembly Warning

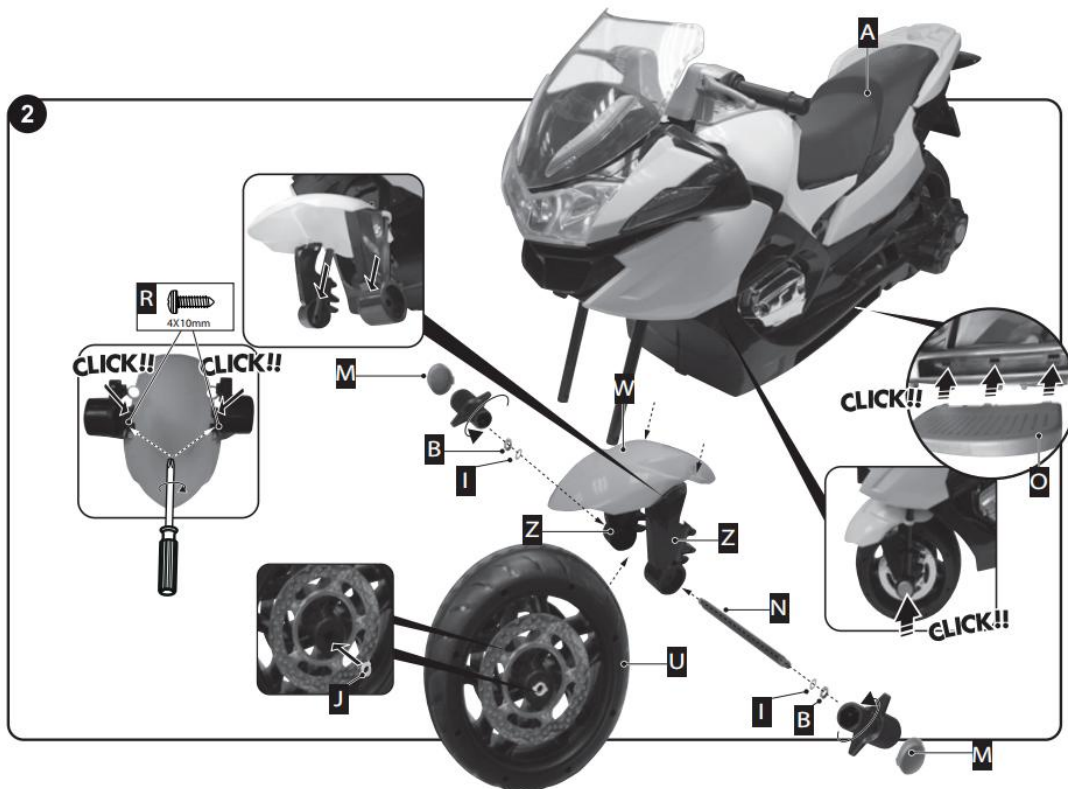
The toy should be used with caution since skill is required to avoid falls or collisions causing injury to the user or third parties.

- The vehicle must be assembled by adults, which needs about 10 minutes.

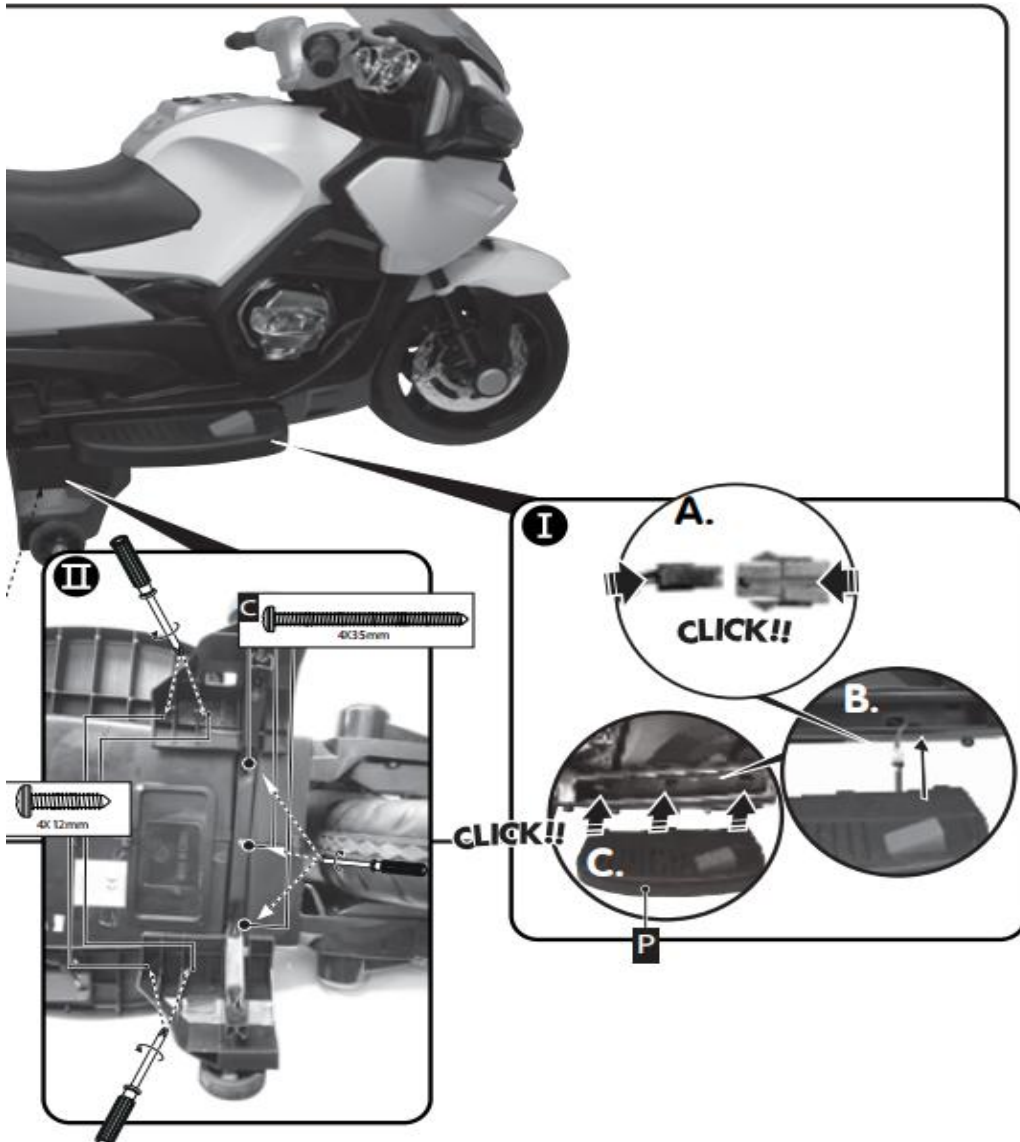
- Tools needed: a screwdriver(  prepared by yourself)

●Don' t let children touch or play the small components so as to avoid children being choked.

●Please check the packing list before assembling. Deal with the plastic bags properly and don' t let children play the bags so as to avoid them being choked.



1. With 4 \* 10 screws front fender
- 2, remove front axle, install front wheel cover.
- 3, insert axle from one side to the other side to install front wheel
- 4, use cap to cover axle up.

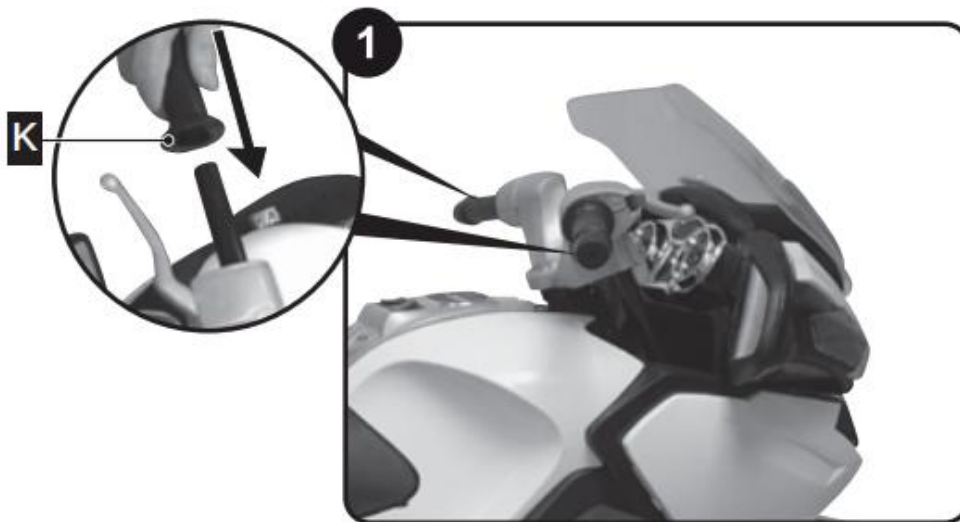
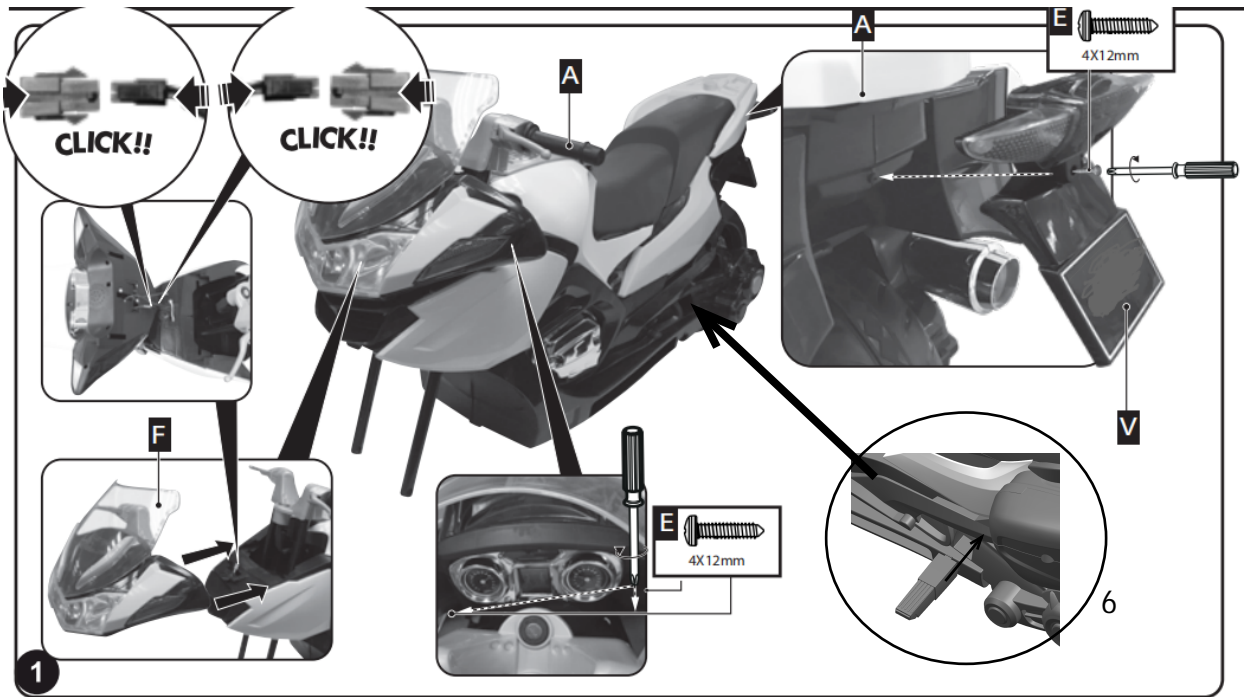


Turn the vehicle body upside down.

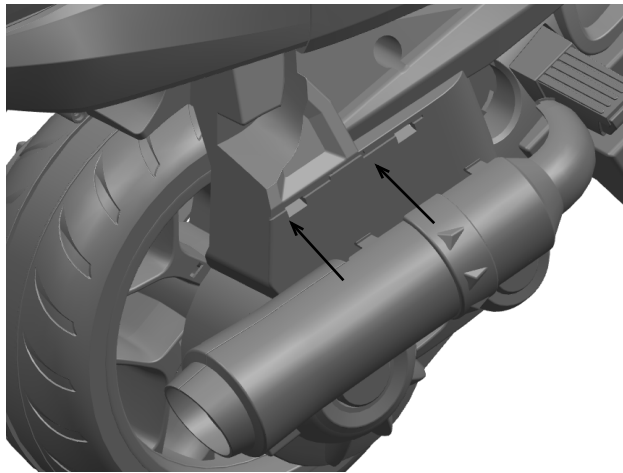
1. Fit the side wheel to vehicle body.

2. Insert  $\text{Ø}4 \times 14$  screws\*4 ,  $\text{Ø}4 \times 35$  screws\*3 and tighten with a screwdriver. Turn the vehicle body upright.

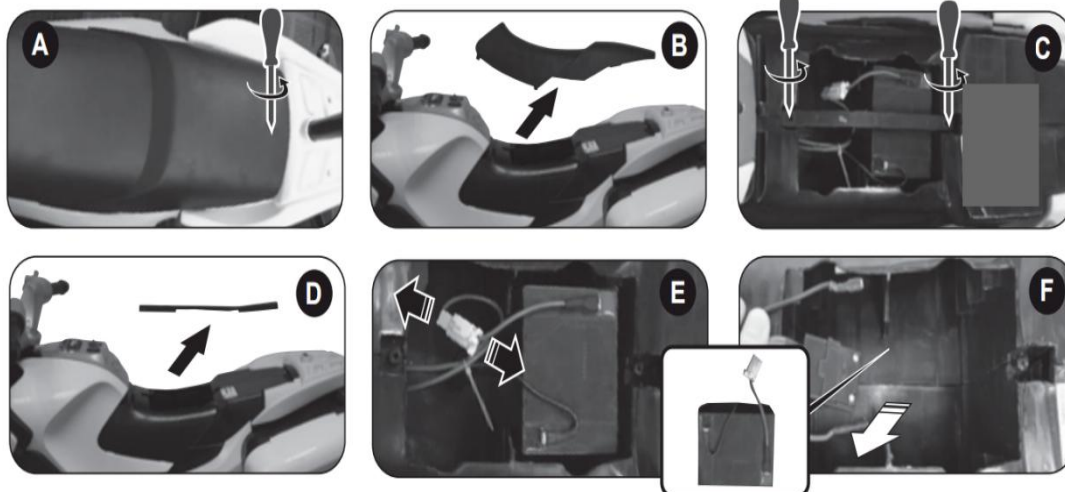
3. Fit the rear foot pedal into the hole on the vehicle body. Push it until you hear it "click" into place. Repeat for the other rear foot pedal.



1. The dock with the line of car body will tap the link line,
- 2 install the leading to the front position of installed,
3. using the 4 \* 14 screws and tighten
4. Insert the handle into the iron grip.
5. With 4 \* 12 screws to license plate fixed to the body position.
6. Insert the foot within the interface.



Install the exhaust pipe directly to the body, make it together.



**The power electricity:**

1. The cushion screw removed, remove the cushion.
2. Insert the battery and docking to the battery terminals, make it good.
3. Mount cushion and screw down the screws.

**Replace the battery:** as shown, to dismantle battery holder, take out the battery replacement.



player

High-speed  
low-speed

Forward  
backward  
switch



charging

**⚠ WARNING!**  
This product with **Charging Protection**: when charging, all functions will be cut off! Only an adult can charge and recharge the battery!

- The POWER SWITCH must be turned in **OFF** position when charging.
- Before the first use, you should charge the battery for 4-6 hours. Do not recharge the battery for more than 10 hours to avoid overheating the charger.
- When the vehicle begins to run slowly, recharge the battery.
- After each use or once a month minimum recharge time as 8 to 12 hours, less than 20 hours at most.
- Use the only rechargeable battery and charger supplied with your vehicle. NEVER substitute the battery or the charger with another brand. Using another battery or charger may cause a fire or explosion.
- Do not use the battery or charger for any other product.