

| 1.0 Reference and Address | | | | | |
|---------------------------|---|------------------|---|----------|-------------|
| Report Number | 221205009GZU-001 | Original Issued: | 20-Mar-2023 | Revised: | 15-Jul-2023 |
| Standard(s) | Commercial Refrigerators and Freezers [NSF/ANSI 7:2021] | | | | |
| Applicant | Shandong Xinhai Intelligent Technology Co., Ltd. | Manufacturer | Shandong Xinhai Intelligent Technology Co., Ltd. | | |
| Address | No. 37, Huaihe Road, Shibe Economic Development Zone, Wulian County, Rizhao City, Shandong Province | Address | No. 37, Huaihe Road, Shibe Economic Development Zone, Wulian County, Rizhao City, Shandong Province | | |
| Country | China | Country | China | | |
| Contact | Sun Zheng | Contact | Sun Zheng | | |
| Phone | 86-150 9229 9223 | Phone | 86-150 9229 9223 | | |
| FAX | NA | FAX | NA | | |
| Email | sunz@xinhigh.com | Email | sunz@xinhigh.com | | |

| 2.0 Product Description | |
|--------------------------------|---|
| Product | Commercial Refrigerator / Freezer |
| Brand name | NA |
| Description | <p>The products covered in the report are commercial refrigerators or freezers intended for indoor use.</p> <p>For TUC series: The products are intended for storage of packaged products only.</p> <p>For TSSP series, TPP series: The products don't incorporate food pans, which shall be supplied by user separately and be placed on the trays in the top displaying area. The pans shall meet the requirements of NSF 2. The equipment is intended for use in rooms having an ambient temperature of 86 °F (30 °C) or lower. The below storage compartment of the appliances are intended for storage of packaged products only.</p> |
| Models | <p>TUC followed by 29R, 29R-2D, 48R, 48R-2D, 48R-4D, 60R, 60R-2D, 60R-4D, 72R, 72R-2D, 72R-4D. 72R-6D, 29F, 48F, 60F or 72F;</p> <p>TSSP followed by 29, 29-2D, 29(M), 29(M)-2D, 48, 48-2D, 48-4D, 48(M), 48(M)-2D, 48(M)-4D, 60, 60-2D, 60-4D, 60(M), 60(M)-2D, 60(M)-4D, 72, 72-2D, 72-4D, 72-6D, 72(M), 72(M)-2D, 72(M)-4D or 72(M)-6D;</p> <p>TPP followed by 44, 44-2D, 67, 67-2D, 67-4D, 93, 93-2D, 93-4D or 93-6D.</p> |
| Model Similarity | <p>TSSP series and TUC series have similar construction, the difference as below:</p> <ol style="list-style-type: none"> 1) TSSP series have refrigerated open top to hold salad pans while TUC series have closed top. 2) compressor and refrigerant charged quantity. 3) TSSP series are refrigerators while TUC series with postfix F are freezers and TUC series with postfix R are refrigerators. <p>TPP series and TSSP series have similar construction, the difference as below:</p> <ol style="list-style-type: none"> 1) the location of evaporating unit and condensing unit. 2) enclosure size. 3) compressor and refrigerant charged quantity. <p>TUC series models have similar construction except for enclosure size, compressor, door type and quantity, eva. fan motor quantity, evaporator and condenser. The postfix R means refrigerator, F means freezer. Models with postfix F have defrost heater and thermal cutout while models with postfix R don't have such system.</p> <p>TSSP series models have similar construction except for enclosure size, salad pan quantity, compressor, door type and quantity, eva. fan motor quantity, evaporator and condenser.</p> <p>TPP series models have similar construction except for enclosure size, pizza pan quantity, compressor, door type and quantity, evaporator and condenser.</p> <p>The postfix 29, 44, 48, 60, 67, 72, 93 means product size.</p> <p>The models with postfix D mean drawer or combination of drawer & door used, models without D mean only door used. 2D, 4D, 6D mean 2 drawer, 4 drawer or 6 drawer used.</p> <p>For TSSP series, models with the postfix (M) mean larger open refrigerated top to hold 3 rows of pan, models without such postfix mean smaller open refrigerated top to hold 2 rows of pan.</p> <p>Refer to Ill. 6. 6.1. of sec 7.0</p> |

| 2.0 Product Description | |
|--------------------------------|--|
| Ratings | TUC29R series: 115VAC, 60Hz, 2.5A, R290 / 1.23OZ; TUC48R series: 115VAC, 60Hz, 3.0A, R290 / 2.12OZ; TUC60R series: 115VAC, 60Hz, 3.1A, R290 / 1.94OZ; TUC72R series: 115VAC, 60Hz, 3.9A, R290 / 3.35OZ; TUC29F: 115VAC, 60Hz, 3.0A, R290 / 1.41OZ, Defrost power 330W; TUC48F: 115VAC, 60Hz, 4.7A, R290 / 2.12OZ, Defrost power 490W; TUC60F: 115VAC, 60Hz, 4.5A, R290 / 2.12OZ, Defrost power 530W; TUC72F: 115VAC, 60Hz, 4.5A, R290 / 2.12OZ, Defrost power 530W; TSSP29 series: 115VAC, 60Hz, 2.9A, R290 / 1.59OZ; TSSP48 series: 115VAC, 60Hz, 3.4A, R290 / 2.29OZ; TSSP60 series: 115VAC, 60Hz, 3.5A, R290 / 2.29OZ; TSSP72 series: 115VAC, 60Hz, 5.2A, R290 / 3.35OZ; TPP44 series: 115VAC, 60Hz, 3.0A, R290 / 5.26OZ; TPP67 series: 115VAC, 60Hz, 4.7A, R290 / 5.26OZ; TPP93 series: 115VAC, 60Hz, 8.8A, R290 / 5.26OZ. |
| Other Ratings | Design Pressure - High /Low side: 340 psig / 140 psig |

3.0 Product Photographs

Photo 1 - Front view - TUC72R, TUC72F



Photo 2 - Front view - TUC72R-6D (represent TUC72R-2D, TUC72R-4D except for door and drawer's quantity, TUC72R-2D uses 2 doors & 2 drawers instead of 6 drawers, TUC72R-4D uses 1 door & 4 drawers.)



3.0 Product Photographs

Photo 3 - Rear view - TUC72R, TUC72R-2D, TUC72R-4D, TUC72R-6D, TUC72F



Photo 4 - Front view - TSSP72-6D (represent TSSP72-2D, TSSP72-4D except for door and drawer's quantity, TSSP72-2D uses 2 doors & 2 drawers instead of 6 drawers, TSSP72-4D uses 1 door & 4 drawers)



3.0 Product Photographs

Photo 5 - Front view - TSSP72(M)-2D (represent TSSP72(M)-4D, TSSP72(M)-6D except for door & drawer's quantity, TSSP72(M)-4D uses 1 door & 4 drawers instead of 2 doors & 2 drawers, TSSP72(M)-6D uses 6 drawers)



Photo 6 - Bottom view - TUC72R (represent TUC series, TSSP series except for product size)



3.0 Product Photographs

Photo 7 - Thermostat part view - TUC72R (represent TUC series, TSSP series)



Photo 8 - Inside of storage compartment view - TUC72R, TUC72F



3.0 Product Photographs

Photo 9 - Door gasket view - TUC72R, TUC72F

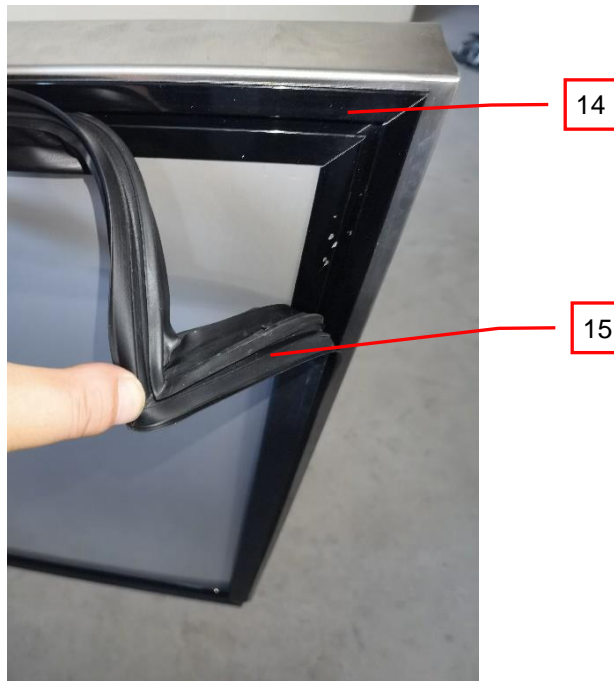


Photo 10 - Inside of storage compartment view - TUC72R, TUC72R-2D, TUC72R-4D, TUC72R-6D, TUC72F (represent TSSP72 series)



3.0 Product Photographs

Photo 11 - Front view - TUC60R, TUC60F (represent TUC48R, TUC48F except for product length, represent TUC60R-2D, TUC60R-4D except for door and drawer's quantity, represent TUC48R-2D, TUC48R-4D except for drawers and product length, TUC60R-2D and TUC48R-2D use 1 door & 2 drawers instead of 2 doors, TUC60R-4D and TUC48R-4D use 4 drawers)



Photo 12 - Rear view - TUC60R, TUC60F (represent TUC60R-2D, TUC60R-4D, represent TUC48R, TUC48R-2D, TUC48R-4D, TUC48F except for product length)



3.0 Product Photographs

Photo 13 - Front view - TSSP48 (represent TSSP48(M) except for width of top storage compartment , represent TSSP60 except for product length, represent TSSP60(M) except for product length and width of top storage compartment, represent TSSP48-2D, TSSP48-4D except for door & drawer's quantity, represent TSSP60-2D, TSSP60-4D except for product length and door & drawer's quantity, TSSP48-2D and TSSP60-2D use 1 door & 2 drawers instead of 2 doors, TSSP48-4D and TSSP60-4D use 4 drawers)



Photo 14 - Rear view - TSSP48 (represent TSSP48 series, represent TSSP60 series except for product length)



3.0 Product Photographs

Photo 15 - Inside of top storage compartment view - TSSP48, TSSP48-2D, TSSP48-4D (represent TSSP60, TSSP60-2D, TSSP60-4D except for product length) (Note: food pans not provided)



Photo 16 - Inside of top storage compartment view - TSSP48(M) (represent TSSP48(M) series, represent TSSP60(M) series except for product length)



3.0 Product Photographs

Photo 17 - Inside of storage compartment view - TUC60R, TUC60F (represent TSSP60 series, represent TUC48R, TSSP48 series, TUC48F except for product length)



Photo 18 - Fan guard part view - TUC60R, TUC60F (represent TSSP60 series, TUC48R, TUC48F, TSSP48 series)



3.0 Product Photographs

Photo 19 - Front view - TUC29R, TUC29F (represent other models except for cabinet size)



Photo 20 - Front view - TUC29R-2D



3.0 Product Photographs

Photo 21 - Rear view - TUC29R, TUC29F, TUC29R-2D



Photo 22 - Front view - TSSP29(M) (Note: TSSP29 has similar construction except for the width of open top. TSSP29-2D has similar construction with TSSP29 except that TSSP29-2D uses 2 drawers while TSSP29 uses 1 door, TSSP29(M)-2D has similar construction with TSSP29(M) except that TSSP29(M) -2D uses 2 drawers while TSSP29(M) used 1 door.)



3.0 Product Photographs

Photo 23 - Rear view - TSSP29M (Note: TSSP29 has similar construction except for the width of open top. TSSP29-2D has similar construction with TSSP29 except that TSSP29 uses door while TSSP29-2D uses 2 drawers)



Photo 24 - Inside of drawer view - TUC29R-2D (TSSP29(M)-2D has the same drawer construction)

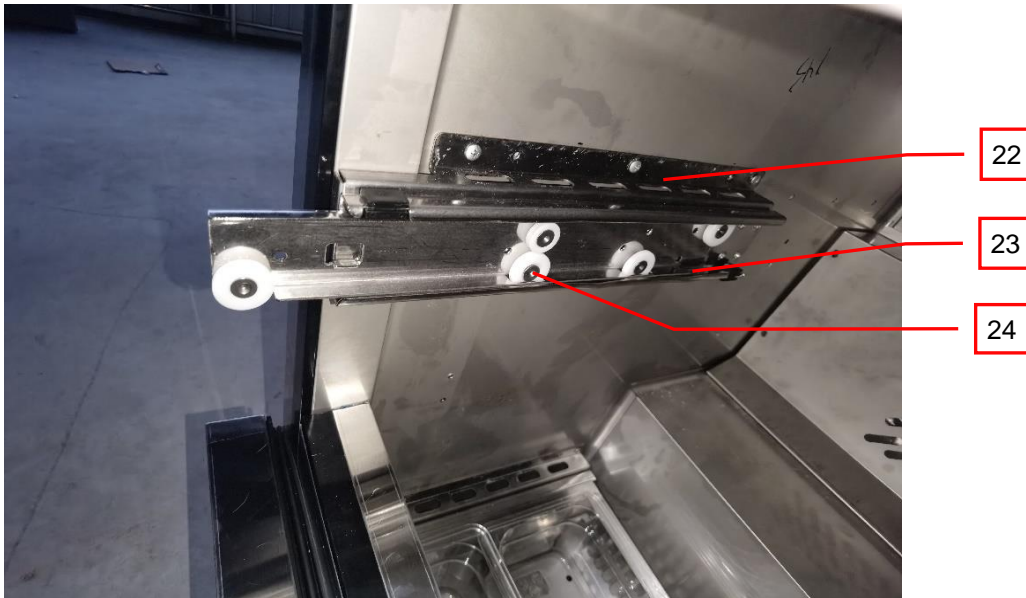


3.0 Product Photographs

Photo 25 - Storage compartment view - TUC29R-2D (TSSP29(M)-2D has the same drawer construction)



Photo 26 - Drawer sliding guide view - TUC29R-2D (TSSP29(M)-2D has the same drawer construction)



3.0 Product Photographs

Photo 27 - Drawer door part view - TUC29R-2D (TSSP29(M)-2D has the same drawer construction)



Photo 28 - Front view - TPP93 (TPP93-2D has similar construction except for 2 door & 2 drawers used instead of 3 doors, TPP93-4D uses 1 door & 4 drawers, TPP93-6D uses 6 drawers)



3.0 Product Photographs

Photo 29 - Control panel view - TPP93, TPP93-2D, TPP93-4D, TPP93-6D (Represent TPP67 series, TPP44 series)



Photo 30 - Rear view - TPP93, TPP93-2D, TPP93-4D, TPP93-6D (Represent TPP67 series, TPP44 series except for enclosure size)

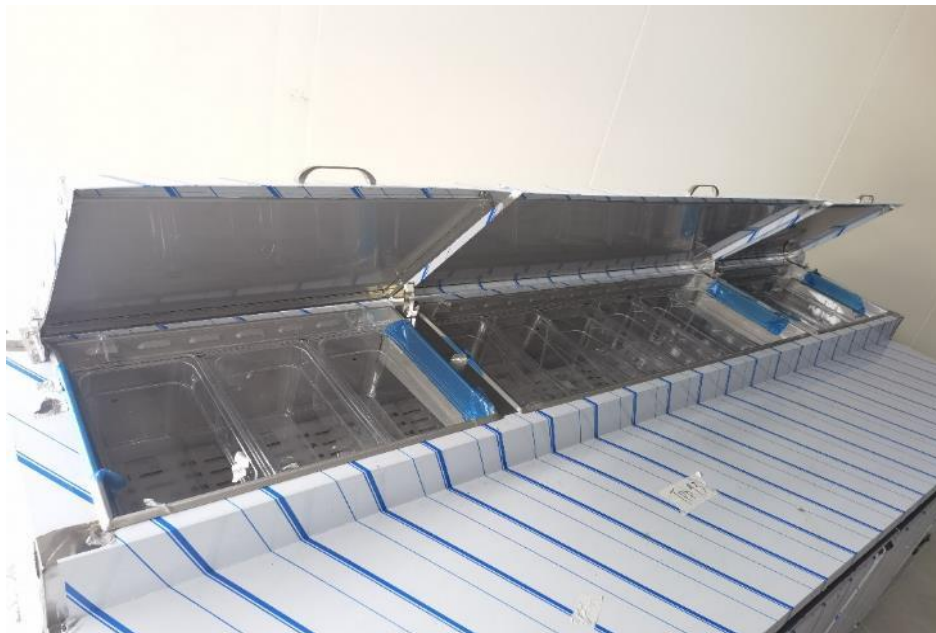


3.0 Product Photographs

Photo 31 - Bottom view - TPP93, TPP93-2D, TPP93-4D, TPP93-6D (Represent TPP67 series, TPP44 series except for enclosure size)



Photo 32 - Top storage compartment view - TPP93, TPP93-2D, TPP93-4D, TPP93-6D (Represent TPP67 series, TPP44 series except for opening length and pan quantity)

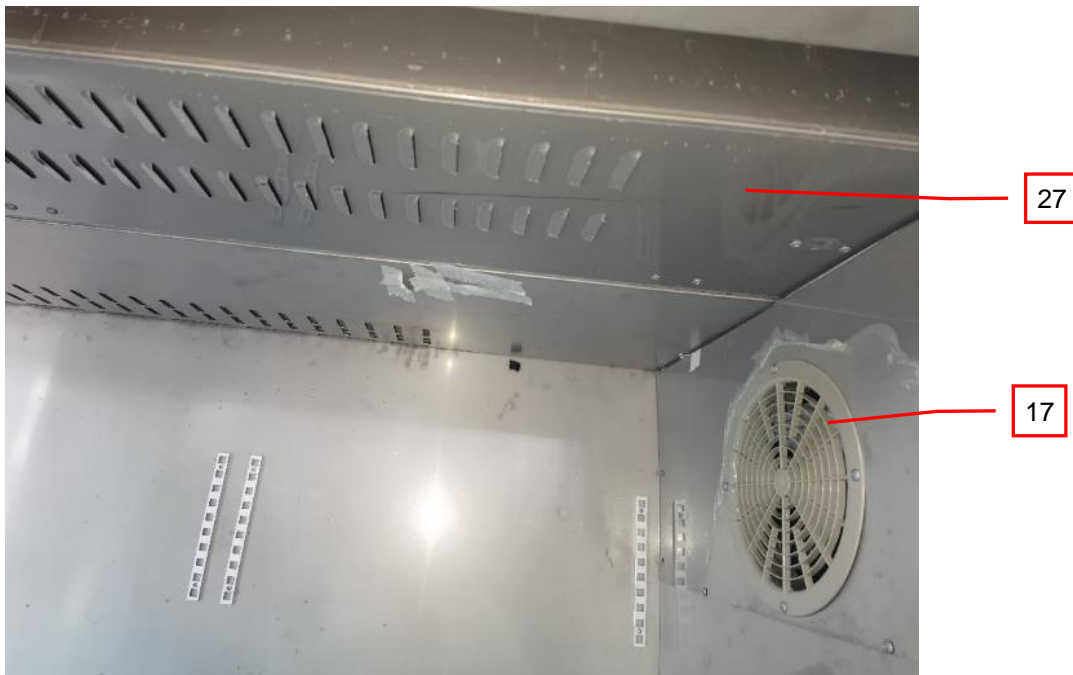


3.0 Product Photographs

Photo 33 - Open door view - TPP93



Photo 34 - Fan guard view - TPP93, TPP93-2D, TPP93-4D, TPP93-6D (Represent TPP67 series, TPP44 series)



3.0 Product Photographs

Photo 35 - Front view - TPP67 (TPP67-2D has similar construction except for 1 door & 2 drawers used instead of 2 doors, and TPP67-4D uses 4 drawers instead of 2 doors)



Photo 36 - Front view - TPP44 (TPP44-2D has similar construction except for 2 drawers used instead of 1 door)



| 4.0 Critical Components | | | | | | |
|-------------------------|-----------------------|--|---|---|--|------------------------------------|
| Photo # | Item no. ¹ | Name and location ^{2,3} | Manufacturer ⁴ | Model/tradename, material type ⁵ | Technical data and acceptance | Mark(s) of conformity ⁶ |
| 1 | 1 | Enclosure (top, right, left, front), SZ | Various | Stainless Steel | SAE Grade 430 | NR |
| 1 | 2 | Door - external side, SZ | Various | Stainless Steel | SAE Grade 430 | NR |
| 3 | 3 | Back enclosure, NFZ | Various | Galvanized steel | Surfaced with electrolytic zinc coating according to ASTM A879-00. Accessible and easily cleanable. | NR |
| 3 | 4 | Compressor grill, NFZ | Various | Hard drawn steel | Accessible and easily cleanable. Coated with Item 4-1. | NR |
| 3 | 4-1 | Powder Coating-enclosure (not shown), SZ | Shandong Tongkang Plastic Powder Co. Ltd. | Organic Coating, THERMOPLAS TIC POWDER SB05 (Black) | Applied thickness: min. 50µm. Galvanized steel substrate. | NR |
| 3 | 5 | Electrical cover, SZ | Various | Stainless Steel | SAE Grade 430 | NR |
| 3 | 6 | Switch button, SZ | Various | Polymeric, PC | Transparent. Smooth surface, accessible and easily cleanable. | NR |
| 6 | 7 | Bottom enclosure, NFZ | Various | Galvanized steel | Surfaced with electrolytic zinc coating according to ASTM A879-00. Accessible and easily cleanable. | NR |
| 6 | 8 | Caster, NFZ | Various | Horn: Galvanized steel Wheel: Nylon | For all models, surfaced with hot dip zinc coating according to ASTM A653/653M-01. Accessible and easily cleanable. Refer to Ill. 5 of sec 7.0 for detailed dimension. | NR |
| 7 | 9 | Thermostat cover, SZ | Various | Polymeric, PC | Transparent. Smooth surface, accessible and easily cleanable. | NR |
| 7 | 10 | Thermostat (Not shown), SZ | DIXELL SRL | Assembly, XR04CX-4N1F1 | Range from -40°C to +110°C. accurate to ± 1°C and is graduated in increments 1°C. removable, accessible and easily cleanable. | NR |
| | | | CAREL | Assembly, PZQDS1J1Q1K | Range from -50°C to +90°C min. accurate to ± 1°C and is graduated in increments 1°C. removable, accessible and easily cleanable. NSF/ANSI 2 Listed | NSF |
| 8 | 11 | Door - internal side, SZ | Various | Stainless Steel | SAE Grade 430 | NR |

| 4.0 Critical Components | | | | | | |
|-------------------------|-----------------------|--------------------------------------|---|--|--|------------------------------------|
| Photo # | Item no. ¹ | Name and location ^{2,3} | Manufacturer ⁴ | Model/tradename, material type ⁵ | Technical data and acceptance | Mark(s) of conformity ⁶ |
| 8 | 12 | Shelf, SZ | Various | Hard drawn steel | Removable and easily cleanable. Coated with Item 12-1. | NR |
| 8 | 12-1 | Powder Coating-Shelf (Not Shown), SZ | Shandong Tongkang Plastic Powder Co. Ltd. | Organic Coating, PE POWDER DW2 (White) | Applied thickness: min. 50µm. Hard-drawn steel substrate. | NR |
| 8 | 13 | Liner, SZ | Various | Stainless Steel | SAE Grade 430 | NR |
| 9 | 14 | Door gasket holder, SZ | Various | Polymeric, PVC | Black, accessible and easily cleanable. | NR |
| 9 | 15 | Door gasket, SZ | Various | Polymeric, PVC | Black, removable and easily cleanable. | NR |
| 10 | 16 | Inner back cover, SZ | Various | Stainless Steel | SAE Grade 430 | NR |
| 10, 34 | 17 | Inner fan guard, SZ | Various | Hard-drawn steel | For TUC series, TSSP series: Surfaced with electrodeposited chromium coating according to ASTM B650-95. Accessible and easily cleanable. | NR |
| | | | | Polymeric, ABS | For TPP series: Gray. Smooth surface, accessible and easily cleanable. | NR |
| 13 | 18 | Top cover, FZ, NFC | Various | Stainless Steel | Only for TSSP series, TPP series: SAE Grade 430 | NR |
| 13 | 19 | Top lid, FZ, NFC | Various | Stainless Steel | Only for TSSP series, TPP series: SAE Grade 430 | NR |
| 13 | 20 | Lid handle, SZ | Various | Stainless Steel | Only for TSSP series, TPP series: SAE Grade 430 | NR |
| 13 | 21 | Cutting board, FZ, FC | Guangdong Jinze Metals Co., Ltd. | Polymeric, PE, JZ-PE CUTTING BOARD (Natural) | NSF/ANSI 2 Listed | NSF |
| 26 | 22 | Drawer guide fixer, SZ | Various | Stainless Steel | Only for models with postfix D: SAE Grade 430 | NR |
| 26 | 23 | Drawer guide, SZ | Various | Stainless Steel | Only for models with postfix D: SAE Grade 430 | NR |
| 26 | 24 | Sliding wheel, SZ | Various | Polymeric, PE | Only for models with postfix D: White. Smooth surface, accessible and easily cleanable. | NR |
| 27 | 25 | Drawer gasket, SZ | Various | Polymeric, PVC | Only for models with postfix D: Black, removable and easily cleanable. | NR |
| 27 | 26 | Drawer basket frame, SZ | Various | Stainless Steel | Only for models with postfix D: SAE Grade 430 | NR |
| 34 | 27 | Separate board, SZ | Various | Stainless Steel | Only for TSSP series, TPP series: SAE Grade 430 | NR |

| 4.0 Critical Components | | | | | | |
|-------------------------|-----------------------|----------------------------------|-----------------------------------|---|---|------------------------------------|
| Photo # | Item no. ¹ | Name and location ^{2,3} | Manufacturer ⁴ | Model/tradename, material type ⁵ | Technical data and acceptance | Mark(s) of conformity ⁶ |
| 4 | 28 | Compressor(Not shown), NFZ | Changhong Huayi Compressor Co Ltd | NUT55NR | Closed. Rated 115V, 60Hz, R290. Refer to Ill. 6, 6.1 of sec 7.0 for detailed models used this compressor. | NR |
| | | | | NUG90NR | Closed. Rated 115V, 60Hz, R290. Refer to Ill. 6, 6.1 for detailed models used this compressor. | NR |
| | | | | NUT70NR | Closed. Rated 115V, 60Hz, R290. Refer to Ill. 6, 6.1 of sec 7.0 for detailed models used this compressor. | NR |
| | | | Huayi Compressor Barcelona S L | NLY12NR | Closed. Rated 115V, 60Hz, R290. Refer to Ill. 6, 6.1 of sec 7.0 for detailed models used this compressor. | NR |

NOTES:

1) Not all item numbers are indicated (called out) in the photos, as their location is obvious.

2) Identifies location on equipment by zone. Identifiers are:

Food Zone, Direct Food Contact (FZ, FC);

Food Zone, One square inch or less of Direct Food Contact (FZ, 1in2)

Food Zone, Non-direct Food Contact (FZ, NFC);

Add "H" in front of FZ designations to indicate a Heated Food Zone;

Splash Zone (SZ);

Non-food Zone (NFZ);

Unexposed non-food zone (UNFZ)

Food zone material requirements with splash zone design and construction requirements are to be designated with applicable FZ requirements in Section 4.0 with SZ construction requirements detailed in Sections 5.0 and 6.0

3) Materials with ITK numbers identify unlisted food contact materials that have been evaluated by Intertek. The material manufacturer and material tradename for these items are not expected to be confirmed onsite during follow-up service inspection

4) "Various" means any type, from any manufacturer, that complies with the "Technical Data and Acceptance" and meets the "Mark(s) of conformity" may be used.

5) Unique identifier (model for components or tradename for materials) must be included in addition to material type if necessary for conformance.

6) Indicates specific marks to be verified, which assures the agreed level of surveillance for the component.

"NR" - indicates Unlisted.

A physical mark may not be present on components made of listed materials (e.g. the listed material is purchased and then molded into a part), in which case evidence that the listing is current must be obtained (by use of an online CB directory, etc.).

"See 5.0" indicates unlisted components or assemblies to be evaluated periodically, refer to section 5.0 for details.

5.0 Critical Unlisted CEC Components

No Unlisted CEC components are used in this report.

6.0 Critical Features

Recognized Component - A component part, which has been previously evaluated by an accredited certification body with restrictions and must be evaluated as part of the basic product considering the restrictions as specified by the Conditions of Acceptability.

Listed Component - A component part, which has been previously Listed or Certified by an accredited Certification Organization with no restrictions and is used in the intended application within its ratings.

Unlisted Component - A part that has not been previously evaluated to the appropriate designated component standard. It may also be a Listed or Recognized component that is being used outside of its evaluated Listing or component recognition.

Critical Features/Components - An essential part, material, subassembly, system, software, or accessory of a product that has a direct bearing on the product's conformance to applicable requirements of the product standard.

Accessible - Manufactured to be exposed for cleaning and inspection with the use of simple tools.

Closed - Manufactured with no space exceeding 1/32 inch (0.031 inch, 0.79 mm).

Easily cleanable - Manufactured so that food and other soiling material may be removed by manual cleaning methods.

Exposed - Open to view from at least one angle.

Hardware - A component of a larger piece of equipment having a specific capability or function including, but not limited to, metal parts such as fasteners, locks, or hinges.

Manual cleaning - Cleaning by hand with appropriate cleaning tools.

Mobile - Mounted on casters, rollers, gliders, or similar devices that allow the equipment to be moved easily along a surface.

Readily accessible - Manufactured to be exposed for cleaning and inspection without the use of tools.

Readily removable - Capable of being detached and taken away from the parent unit without the use of tools.

Removable - Capable of being detached and taken away from the parent unit, and reattached to the parent unit with the use of simple tools.

Sealed - Manufactured without openings, to prevent entry or leakage of liquid or moisture.

Simple tools - Hand tools commonly available to food establishment maintenance and cleaning personnel, such as screwdrivers, pliers, open-ended wrenches, and Allen wrenches.

Smooth - Free of pits, pinholes, cracks, crevices, inclusions, rough edges, and other surface imperfections detectable by visual and tactile inspection.

Tight-fitting - Manufactured with no space exceeding 1/64 inch (0.016 inch, 0.40 mm).

Zones

Food zone, food contact - Equipment surfaces intended to be in direct contact with food

Food zone, non-food contact - Equipment surfaces that food or condensate may contact and then drain, drip, or splash back into food or onto surfaces that are intended to be in direct contact with food.

Heated food zone - Food zone surfaces that maintain a minimum temperature of 180 °F (82 °C) during normal operation.

Splash zone - Equipment surfaces, other than those in a food zone, that are subject to splash, spillage, or other food soiling during operation of the equipment.

| 6.0 Critical Features | |
|------------------------------------|--|
| | <p><u>Nonfood zone</u> - Exposed equipment surfaces other than those in a food or splash zone.</p> <p><u>Unexposed non-food zone</u> - Enclosed areas that are unexposed under normal use conditions. Included in this definition are areas that are inaccessible or are designed to be accessed only for maintenance and/or service through means including but not limited to covers, panels, or doors that are removable, readily removable, sliding or hinged.</p> |
| 6.1 Design and construction | |
| | All products are marked with: the Applicant's name; Basic or Multiple Listee's name as defined in section 9.0; or brand names and model number. |
| 1 | <u>Labeling</u> - For TUC series: The products are intended for storage of packaged products only. For TSSP series, TPP series: The equipment is intended for use in rooms having an ambient temperature of 86 °F (30 °C) or lower. The below storage compartment of the appliances are intended for storage of packaged products only. |
| 2 | <u>Literature</u> - Illustration 1 of section 7. |
| 3 | <u>General sanitation</u> - None |
| 4 | <u>Angles and corners</u> - Exposed external angles and corners shown in Illustration 2 are sealed and smooth. |
| 5 | <u>Joints and seams</u> - Permanent joints and seams shown in Illustration 3 are sealed and smooth. Permanent joints and seams shown in Illustration 4 are closed. |
| 6 | <u>Fasteners</u> - Fasteners are easily cleanable types, not used in a food zone, located in the splash and non-food zones, slotted and Phillips-head, some hex-head in the non-food zone, only one flat washer per fastener head, no external-toothed locking washers used. No pop-rivets. |
| 7 | <u>Insulation</u> - Insulation is installed so as to prevent becoming compacted under use condition. |
| 8 | <u>Reinforcing and framing</u> - Reinforcing beams on bottom of unit are closed along the entire channel and have no openings. |
| 9 | <u>Panels, doors and covers (include hinges, door gaskets, tracks & guides, etc.)</u> - Door gaskets are easily cleanable and removable for replacement. |
| 10 | <u>Louvers</u> - Louver is removable, and the space immediately behind the louver is easily cleanable. |
| 11 | <u>Hardware, drains, handles, latches, etc.</u> - Handles are accessible and easily cleanable. |
| 12 | <u>Equipment mounting (include legs, feet, casters, gliders, etc.)</u> - Equipment is floor-mounted on castors for mobility. |

7.0 Illustrations

Illustration 1 - Labels (Representative)



For TUC series model, marked as below:

This equipment is intended for the storage and/or display of packaged foods only.

For TSSP series, TPP series, marked as below:

The equipment is intended for use in rooms having an ambient temperature of 86 ° F (30 ° C) or lower.
The below storage compartment of the appliances are intended for storage of packaged products only

Illustration 2 - Exposed external angles and corners in Splash Zone



7.0 Illustrations

Illustration 3 - Permanent Joints and Seams in Splash Zone

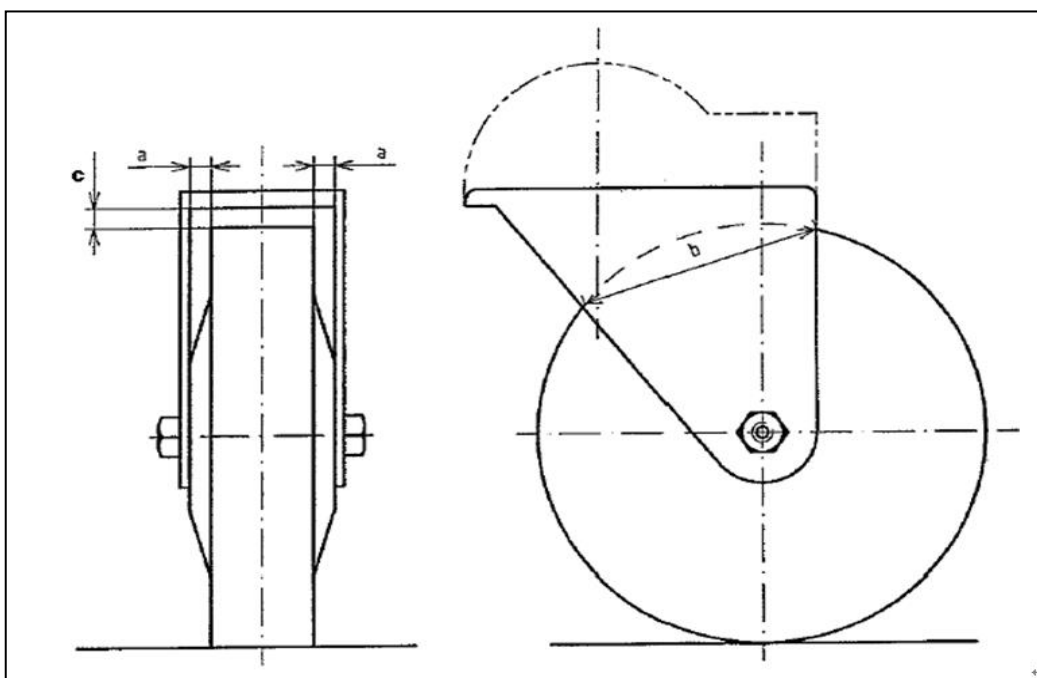


Illustration 4 - Permanent Joints and Seams in Non-food Zone



7.0 Illustrations

Illustration 5 - Caster Drawing



Swivel castor

Dimension measured for a: 6.5 mm

Dimension measured for b: 23 mm

Dimension measured for c: 6.5 mm

Dimension of outer diameter of castor measured: 34 mm

7.0 Illustrations

Illustration 6 - Table of product similarity

| Model | Product Type | Open refrigerated top | Door Type / Qty | Volume (L) | Enclosure size (DxWxH, mm) | Compressor | |
|--------------|--------------|----------------------------|-------------------------------|------------|----------------------------|------------|-----------|
| TUC29R | Refrigerator | No | Door / 1 pcs | 195 | 770x735x966 | NUT55NR 1 | |
| TUC29R-2D | Refrigerator | No | Drawer / 2 pcs | | | | |
| TUC48R | Refrigerator | No | Door / 2 pcs | 314 | 770x1230x966 | | |
| TUC48R-2D | Refrigerator | No | Door / 1 pcs & Drawer / 2 pcs | | | | |
| TUC48R-4D | Refrigerator | No | Drawer / 4 pcs | | | | |
| TUC60R | Refrigerator | No | Door / 2 pcs | 400 | 770x1555x966 | | |
| TUC60R-2D | Refrigerator | No | Door / 1 pcs & Drawer / 2 pcs | | | | |
| TUC60R-4D | Refrigerator | No | Drawer / 4 pcs | | | | |
| TUC72R | Refrigerator | No | Door & 3 pcs | 470 | 770x1827x966 | | NUT70NR 1 |
| TUC72R-2D | Refrigerator | No | Door / 2 pcs & Drawer / 2 pcs | | | | |
| TUC72R-4D | Refrigerator | No | Door / 1 pcs & Drawer / 4 pcs | | | | |
| TUC72R-6D | Refrigerator | No | Drawer / 6 pcs | | | | |
| TUC29F | Freezer | No | Door / 1 pcs | 195 | 770x735x966 | NUT55NR 1 | |
| TUC48F | Freezer | No | Door / 2 pcs | 314 | 770x1230x966 | NUG90NR 1 | |
| TUC60F | Freezer | No | Door / 2 pcs | 400 | 770x1555x966 | | |
| TUC72F | Freezer | No | Door / 3 pcs | 470 | 770x1827x966 | | |
| TSSP29 | Refrigerator | Yes & 2 rows of tray | Door / 1 pcs | 215 | 770x735x1144 | NUT55NR 1 | |
| TSSP29-2D | Refrigerator | Yes & 2 rows of tray | Drawer / 2 pcs | | 770x735x1144 | | |
| TSSP29(M) | Refrigerator | Yes & 3 rows of salad pans | Door / 1 pcs | | 863x735x1196 | | |
| TSSP29(M)-2D | Refrigerator | Yes & 3 rows of salad pans | Drawer / 2 pcs | | 863x735x1196 | | |
| TSSP48 | Refrigerator | Yes & 2 rows of tray | Door / 2 pcs | 390 | 770x1230x1144 | NUT70NR 1 | |
| TSSP48-2D | Refrigerator | Yes & 2 rows of tray | Door / 1 pcs & Drawer / 2 pcs | | 770x1230x1144 | | |
| TSSP48-4D | Refrigerator | Yes & 2 rows of tray | Drawer / 4 pcs | | 863x1555x1196 | | |
| TSSP48(M) | Refrigerator | Yes & 3 rows of tray | Door / 2 pcs | | | | |
| TSSP48(M)-2D | Refrigerator | Yes & 3 rows of tray | Door / 1 pcs & Drawer / 2 pcs | | | | |
| TSSP48(M)-4D | Refrigerator | Yes & 3 rows of tray | Drawer / 4 pcs | | | | |

7.0 Illustrations

Illustration 6.1 - Table of product similarities(Con'd)

| Model | Product Type | Open refrigerated top | Door Type / Qty | Volume (L) | Enclosure size (D×W×H, mm) | Compressor |
|--------------|--------------|-----------------------|-------------------------------|------------|----------------------------|------------|
| TSSP60 | Refrigerator | Yes & 2 rows of tray | Door & 2 pcs | 505 | 770×1555×1144 | NUT70NR 1 |
| TSSP60-2D | Refrigerator | Yes & 2 rows of tray | Door / 1 pcs & Drawer / 2 pcs | | | |
| TSSP60-4D | Refrigerator | Yes & 2 rows of tray | Drawer / 4 pcs | | | |
| TSSP60(M) | Refrigerator | Yes & 3 rows of tray | Door / 2 pcs | | 863×1555×1196 | |
| TSSP60(M)-2D | Refrigerator | Yes & 3 rows of tray | Door / 1 pcs & Drawer / 2 pcs | | | |
| TSSP60(M)-4D | Refrigerator | Yes & 3 rows of tray | Drawer / 4 pcs | | | |
| TSSP72 | Refrigerator | Yes & 2 rows of tray | Door / 3 pcs | 601 | 770×1827×1144 | NUG90NR 1 |
| TSSP72-2D | Refrigerator | Yes & 2 rows of tray | Door / 2 pcs & Drawer / 2 pcs | | | |
| TSSP72-4D | Refrigerator | Yes & 2 rows of tray | Door / 1 pcs & Drawer / 4 pcs | | | |
| TSSP72-6D | Refrigerator | Yes & 2 rows of tray | Drawer / 6 pcs | | | |
| TSSP72(M) | Refrigerator | Yes & 3 rows of tray | Door / 3 pcs | | 863×1827×1196 | |
| TSSP72(M)-2D | Refrigerator | Yes & 3 rows of tray | Door / 2 pcs & Drawer / 2 pcs | | | |
| TSSP72(M)-4D | Refrigerator | Yes & 3 rows of tray | Door / 1 pcs & Drawer / 4 pcs | | | |
| TSSP72(M)-6D | Refrigerator | Yes & 3 rows of tray | Drawer / 6 pcs | | | |
| TPP44 | Refrigerator | Yes & 1 row of tray | Door / 1 pcs | 310 | 1117×822×1069 | NUT55NR 1 |
| TPP44-2D | Refrigerator | Yes & 1 row of tray | Drawer / 2 pcs | | | |
| TPP67 | Refrigerator | Yes & 1 row of tray | Door / 2 pcs | 592 | 1702×822×1069 | NUG90NR 1 |
| TPP67-2D | Refrigerator | Yes & 1 row of tray | Door / 1 pcs & Drawer / 2 pcs | | | |
| TPP67-4D | Refrigerator | Yes & 1 row of tray | Drawer / 4 pcs | | | |
| TPP93 | Refrigerator | Yes & 1 row of tray | Door / 3 pcs | 874 | 2362×822×1069 | NLY12NR |
| TPP93-2D | Refrigerator | Yes & 1 row of tray | Door / 2 pcs & Drawer / 2 pcs | | | |
| TPP93-4D | Refrigerator | Yes & 1 row of tray | Door / 1 pcs & Drawer / 4 pcs | | | |
| TPP93-6D | Refrigerator | Yes & 1 row of tray | Drawer / 6 pcs | | | |

| 8.0 Test Summary | | | |
|---|---|-----------|--------------------------|
| Evaluation Period | 2022-12-06 to 2023-03-16 | | Project No. 221205009GZU |
| Sample Rec. Date | 12/5/2022 | Condition | Prototype |
| | | | Sample ID. TMP-001~007 |
| Test Location | Intertek Testing Services Shenzhen Limited Guangzhou Branch (Room 02, &101/E201/E301/E401/E501/E601/E701/E801 of Room 01 1-8/F., No. 7-2, Caipin Road, Science City, GETDD Guangzhou, China) | | |
| Test Procedure | Testing Lab | | |
| Determination of the result includes consideration of measurement uncertainty from the test equipment and methods. The product was tested as indicated below with results in conformance to the relevant test criteria. | | | |
| Due to the previous testing performed under Intertek Report 220514002GZU-001, only the following tests were performed: | | | |
| Test Description | NSF/ANSI 7: 2021 Clause | | |
| Performance – storage refrigerators and refrigerated food transport cabinets (TUC29R, TUC48R, TUC60R, TUC72R) | 6.10 | | |
| Performance-storage freezer (TUC29F, TUC48F, TUC72F) | 6.11 | | |
| Performance-Refrigerated buffet units and refrigerated food preparation units (TSSP29(M), TSSP48(M), TSSP60(M), TSSP72(M), TPP44, TPP67, TPP93) | 7.5 | | |

| 8.1 Signatures | | | |
|--|--------------------------|--------------|--------------------------|
| A representative sample of the product covered by this report has been evaluated and found to comply with the applicable requirements of the standards indicated in Section 1.0. | | | |
| Completed by: | Silva Zhou | Reviewed by: | Jack Yang |
| Title: | Asst. Manager | Title: | Sr. Technical Supervisor |
| Signature: | <i>Signature on file</i> | Signature: | <i>Signature on file</i> |

9.0 Correlation Page For Multiple Listings

The following products, which are identical to those identified in this report except for model number and Listee name, are authorized to bear the ETL label under provisions of the Intertek Multiple Listing Program.

| | |
|--------------|---|
| BASIC LISTEE | Shandong Xinhai Intelligent Technology Co., Ltd. |
| Address | No. 37, Huaihe Road, Shibe Economic Development Zone, Wulian County, Rizhao City, Shandong Province |
| Country | China |
| Product | Commercial Refrigerator / Freezer |

| | |
|-------------------|---|
| MULTIPLE LISTEE 1 | Greenfield World Trade Inc dba The Legacy Companies |
| Address | 3355 Enterprise Avenue, Weston, FL, 33331 |
| Country | USA |
| Brand Name | MAXX COLD, KRATOS, DURRA |

| | |
|-------------------------|---|
| ASSOCIATED MANUFACTURER | Shandong Xinhai Intelligent Technology Co., Ltd. |
| Address | No. 37, Huaihe Road, Shibe Economic Development Zone, Wulian County, Rizhao City, Shandong Province |
| Country | China |

| MULTIPLE LISTEE 1 MODELS | BASIC LISTEE MODELS |
|------------------------------|---------------------|
| MXSR29SHC, 69K-769HC, DUPT29 | TSSP29 |
| MXSR48SHC, 69K-770HC, DUPT48 | TSSP48 |
| MXSR60SHC, 69K-771HC, DUPT60 | TSSP60 |
| MXSR72SHC | TSSP72 |
| MXSPP50HC, 69K-772HC, DUPP50 | TPP44 |
| MXSPP70HC, 69K-763HC, DUPP70 | TPP67 |
| MXSPP92HC, 69K-762HC, DUPP92 | TPP93 |
| MXSR29UHC, 69K-767HC, DUR29 | TUC29R |
| MXSR48UHC, 69K-768HC, DUR48 | TUC48R |
| MXSR60UHC, 69K-752HC, DUR60 | TUC60R |
| MXSR72UHC | TUC72R |
| MXSF29UHC, 69K-766HC, DUF29 | TUC29F |
| MXSF48UHC, 69K-764HC, DUF48 | TUC48F |
| MXSF60UHC, 69K-753HC, DUF60 | TUC60F |
| MXSF72UHC | TUC72F |

9.0 Correlation Page For Multiple Listings

| | |
|--------------------------------|---|
| MULTIPLE LISTEE 2 | HONEY MANAGEMENT GROUP, INC. |
| Address | 14923 PROCTOR AVE, CITY OF INDUSTRY, CA 91746 |
| Country | USA |
| Brand Name | COOLER DEPOT |
| ASSOCIATED MANUFACTURER | Shandong Xinhai Intelligent Technology Co., Ltd. |
| Address | No. 37, Huaihe Road, Shibe Economic Development Zone, Wulian County, Rizhao City, Shandong Province |
| Country | China |

| MULTIPLE LISTEE 2 MODELS | BASIC LISTEE MODELS |
|--------------------------|---------------------|
| TSSP29 | TSSP29 |
| TSSP48 | TSSP48 |
| TSSP60 | TSSP60 |
| TSSP72 | TSSP72 |
| TSSP29(M) | TSSP29(M) |
| TSSP48(M) | TSSP48(M) |
| TSSP60(M) | TSSP60(M) |
| TSSP72(M) | TSSP72(M) |
| TSSP29(M)-2D | TSSP29(M)-2D |
| TSSP48(M)-2D | TSSP48(M)-2D |
| TSSP48(M)-4D | TSSP48(M)-4D |
| TSSP60(M)-2D | TSSP60(M)-2D |
| TSSP60(M)-4D | TSSP60(M)-4D |
| TSSP72-2D | TSSP72-2D |
| TSSP72-4D | TSSP72-4D |
| TSSP72-6D | TSSP72-6D |
| TPP44 | TPP44 |
| TPP67 | TPP67 |
| TPP93 | TPP93 |
| TPP44-2D | TPP44-2D |
| TPP67-2D | TPP67-2D |
| TPP67-4D | TPP67-4D |
| TPP93-2D | TPP93-2D |
| TPP93-4D | TPP93-4D |
| TPP93-6D | TPP93-6D |
| TUC29R | TUC29R |
| TUC48R | TUC48R |
| TUC60R | TUC60R |
| TUC72R | TUC72R |
| TUC29F | TUC29F |
| TUC48F | TUC48F |
| TUC60F | TUC60F |
| TUC72F | TUC72F |
| TUC29R-2D | TUC29R-2D |
| TUC48R-2D | TUC48R-2D |
| TUC48R-4D | TUC48R-4D |
| TUC60R-2D | TUC60R-2D |
| TUC60R-4D | TUC60R-4D |
| TUC72R-2D | TUC72R-2D |
| TUC72R-4D | TUC72R-4D |
| TUC72R-6D | TUC72R-6D |

9.0 Correlation Page For Multiple Listings

| | | |
|--------------------------------|--|----------------------------|
| MULTIPLE LISTEE 3 | NORTH AMERICAN RESTAURANT EQUIPMENT | |
| Address | 10 INDUSTRIAL DRIVE, SMITHFIELD RI 02917 | |
| Country | USA | |
| Brand Name | NORTH AMERICAN | |
| ASSOCIATED MANUFACTURER | Shandong Xinhai Intelligent Technology Co., Ltd. | |
| Address | No. 37, Huaihe Road, Shibei Economic Development Zone, Wulian County, Rizhao City, Shandong Province | |
| Country | China | |
| | MULTIPLE LISTEE 3 MODELS | BASIC LISTEE MODELS |
| | ASP2-27-8 | TSSP29 |
| | ASP2-48-12 | TSSP48 |
| | ASP2-60-16 | TSSP60 |
| | ASP2-72-18 | TSSP72 |
| | ASP2-27-12 | TSSP29(M) |
| | ASP2-48-18 | TSSP48(M) |
| | ASP2-60-24 | TSSP60(M) |
| | ASP2-72-30 | TSSP72(M) |
| | ASP2-27-8-2D | TSSP29-2D |
| | ASP2-48-12-2D | TSSP48-2D |
| | ASP2-48-12-4D | TSSP48-4D |
| | ASP2-60-16-2D | TSSP60-2D |
| | ASP2-60-16-4D | TSSP60-4D |
| | ASP2-72-18-2D | TSSP72-2D |
| | ASP2-72-18-4D | TSSP72-4D |
| | ASP2-72-18-6D | TSSP72-6D |
| | ASP2-27-12-2D | TSSP29(M)-2D |
| | ASP2-48-18-2D | TSSP48(M)-2D |
| | ASP2-48-18-4D | TSSP48(M)-4D |
| | ASP2-60-24-2D | TSSP60(M)-2D |
| | ASP2-60-24-4D | TSSP60(M)-4D |
| | ASP2-72-30-2D | TSSP72(M)-2D |
| | ASP2-72-30-4D | TSSP72(M)-4D |
| | ASP2-72-30-6D | TSSP72(M)-6D |
| | P2-44 | TPP44 |
| | P2-67 | TPP67 |
| | P2-93 | TPP93 |
| | P2-44-2D | TPP44-2D |
| | P2-67-2D | TPP67-2D |
| | P2-67-4D | TPP67-4D |
| | P2-93-2D | TPP93-2D |

| 9.0 Correlation Page For Multiple Listings | |
|--|-----------|
| P2-93-4D | TPP93-4D |
| P2-93-6D | TPP93-6D |
| AWTC2-27 | TUC29R |
| AWTC2-48 | TUC48R |
| AWTC2-60 | TUC60R |
| AWTC2-72 | TUC72R |
| AWTF2-27 | TUC29F |
| AWTF2-48 | TUC48F |
| AWTF2-60 | TUC60F |
| AWTF2-72 | TUC72F |
| AWTC2-27-2D | TUC29R-2D |
| AWTC2-48-2D | TUC48R-2D |
| AWTC2-48-4D | TUC48R-4D |
| AWTC2-60-2D | TUC60R-2D |
| AWTC2-60-4D | TUC60R-4D |
| AWTC2-72-2D | TUC72R-2D |
| AWTC2-72-4D | TUC72R-4D |
| AWTC2-72-6D | TUC72R-6D |

9.0 Correlation Page For Multiple Listings

| | |
|--------------------------|---|
| MULTIPLE LISTEE 4 | US Restaurant Group Inc. |
| Address | P.O.Box 1323 Long Island City, NY 11101 |
| Country | USA |
| Brand Name | COLDLINE |

| | |
|--------------------------------|---|
| ASSOCIATED MANUFACTURER | Shandong Xinhai Intelligent Technology Co., Ltd. |
| Address | No. 37, Huaihe Road, Shibe Economic Development Zone, Wulian County, Rizhao City, Shandong Province |
| Country | China |

| MULTIPLE LISTEE 4 MODELS | BASIC LISTEE MODELS |
|--------------------------|---------------------|
| SP-29S | TSSP29 |
| SP-48S | TSSP48 |
| SP-60S | TSSP60 |
| SP-72S | TSSP72 |
| SMP-29S | TSSP29(M) |
| SMP-48S | TSSP48(M) |
| SMP-60S | TSSP60(M) |
| SMP-72S | TSSP72(M) |
| SMP-29S-2D | TSSP29(M)-2D |
| SMP-48S-2D | TSSP48(M)-2D |
| SMP-48S-4D | TSSP48(M)-4D |
| SMP-60S-2D | TSSP60(M)-2D |
| SMP-60S-4D | TSSP60(M)-4D |
| SP-72S-2D | TSSP72-2D |
| SP-72S-4D | TSSP72-4D |
| SP-72S-6D | TSSP72-6D |
| CPT-44S | TPP44 |
| CPT-67S | TPP67 |
| CPT-93S | TPP93 |
| CPT-44S-2D | TPP44-2D |
| CPT-67S-2D | TPP67-2D |
| CPT-67S-4D | TPP67-4D |
| CPT-93S-2D | TPP93-2D |
| CPT-93S-4D | TPP93-4D |
| CPT-93S-6D | TPP93-6D |
| UC-29RS | TUC29R |
| UC-48RS | TUC48R |
| UC-60RS | TUC60R |
| UC-72RS | TUC72R |
| UC-29FS | TUC29F |
| UC-48FS | TUC48F |
| UC-60FS | TUC60F |
| UC-72FS | TUC72F |
| UC-29RS-2D | TUC29R-2D |
| UC-48RS-2D | TUC48R-2D |
| UC-48RS-4D | TUC48R-4D |
| UC-60RS-2D | TUC60R-2D |
| UC-60RS-4D | TUC60R-4D |
| UC-72RS-2D | TUC72R-2D |
| UC-72RS-4D | TUC72R-4D |
| UC-72RS-6D | TUC72R-6D |

9.0 Correlation Page For Multiple Listings

| | |
|--------------------------|--|
| MULTIPLE LISTEE 5 | ANHUI WEIYE REFRIGERATION TECHNOLOGY.,LTD |
| Address | NO.168 NORTH JINGQI RD, INDUSTRIAL ZONE, TIANCHANG CITY,ANHUI 239300 |
| Country | China |
| Brand Name | COLDLINE, FRICOOL |

| | |
|--------------------------------|---|
| ASSOCIATED MANUFACTURER | Shandong Xinhai Intelligent Technology Co., Ltd. |
| Address | No. 37, Huaihe Road, Shibe Economic Development Zone, Wulian County, Rizhao City, Shandong Province |
| Country | China |

| MULTIPLE LISTEE 5 MODELS | BASIC LISTEE MODELS |
|--------------------------|---------------------|
| SP-29 | TSSP29 |
| SP-48 | TSSP48 |
| SP-29M | TSSP29(M) |
| SP-48M | TSSP48(M) |
| SP-60M | TSSP60(M) |
| SP-72M | TSSP72(M) |
| UC29R | TUC29R |
| UC48R | TUC48R |
| UC60R | TUC60R |
| UC72R | TUC72R |
| UC29F | TUC29F |
| UC48F | TUC48F |

9.0 Correlation Page For Multiple Listings

| | |
|--------------------------|---|
| MULTIPLE LISTEE 6 | Genkraft Technologies Corp |
| Address | 11990 Rivera Rd Santa Fe Springs. CA. 90670 |
| Country | China |
| Brand Name | GENKRAFT |

| | |
|--------------------------------|--|
| ASSOCIATED MANUFACTURER | Shandong Xinhai Intelligent Technology Co., Ltd. |
| Address | No. 37, Huaihe Road, Shibei Economic Development Zone, Wulian County, Rizhao City, Shandong Province |
| Country | China |

| MULTIPLE LISTEE 6 MODELS | BASIC LISTEE MODELS |
|--------------------------|---------------------|
| GTSSP29 | TSSP29 |
| GTSSP48 | TSSP48 |
| GTSSP60 | TSSP60 |
| GTSSP72 | TSSP72 |
| GTSSP29(M) | TSSP29(M) |
| GTSSP48(M) | TSSP48(M) |
| GTSSP60(M) | TSSP60(M) |
| GTSSP72(M) | TSSP72(M) |
| GTSSP29-2D | TSSP29-2D |
| GTSSP48-2D | TSSP48-2D |
| GTSSP48-4D | TSSP48-4D |
| GTSSP60-2D | TSSP60-2D |
| GTSSP60-4D | TSSP60-4D |
| GTSSP72-2D | TSSP72-2D |
| GTSSP72-4D | TSSP72-4D |
| GTSSP72-6D | TSSP72-6D |
| GTSSP29(M)-2D | TSSP29(M)-2D |
| GTSSP48(M)-2D | TSSP48(M)-2D |
| GTSSP48(M)-4D | TSSP48(M)-4D |
| GTSSP60(M)-2D | TSSP60(M)-2D |
| GTSSP60(M)-4D | TSSP60(M)-4D |
| GTSSP72(M)-2D | TSSP72(M)-2D |
| GTSSP72(M)-4D | TSSP72(M)-4D |
| GTSSP72(M)-6D | TSSP72(M)-6D |
| GTPP44 | TPP44 |
| GTPP67 | TPP67 |
| GTPP93 | TPP93 |
| GTPP44-2D | TPP44-2D |
| GTPP67-2D | TPP67-2D |
| GTPP67-4D | TPP67-4D |
| GTPP93-2D | TPP93-2D |

9.0 Correlation Page For Multiple Listings

| | |
|------------|-----------|
| GTPP93-4D | TPP93-4D |
| GTPP93-6D | TPP93-6D |
| GTUC29R | TUC29R |
| GTUC48R | TUC48R |
| GTUC60R | TUC60R |
| GTUC72R | TUC72R |
| GTUC29F | TUC29F |
| GTUC48F | TUC48F |
| GTUC60F | TUC60F |
| GTUC72F | TUC72F |
| GTUC29R-2D | TUC29R-2D |
| GTUC48R-2D | TUC48R-2D |
| GTUC48R-4D | TUC48R-4D |
| GTUC60R-2D | TUC60R-2D |
| GTUC60R-4D | TUC60R-4D |
| GTUC72R-2D | TUC72R-2D |
| GTUC72R-4D | TUC72R-4D |
| GTUC72R-6D | TUC72R-6D |

9.0 Correlation Page For Multiple Listings

| | |
|--------------------------|---|
| MULTIPLE LISTEE 7 | Consolidated Brands of America, LLC |
| Address | 251 LITTLE FALLS DRIVE, WILMINGTON, DE, 19808 |
| Country | USA |
| Brand Name | ATLAS AIR |

| | |
|--------------------------------|---|
| ASSOCIATED MANUFACTURER | Shandong Xinhai Intelligent Technology Co., Ltd. |
| Address | No. 37, Huaihe Road, Shibe Economic Development Zone, Wulian County, Rizhao City, Shandong Province |
| Country | China |

| MULTIPLE LISTEE 7 MODELS | BASIC LISTEE MODELS |
|--------------------------|---------------------|
| ASP29, ASP29-SI | TSSP29 |
| ASP48, ASP48-SI | TSSP48 |
| ASP60, ASP60-SI | TSSP60 |
| ASP72, ASP72-SI | TSSP72 |
| ASP29M, ASP29M-SI | TSSP29(M) |
| ASP48M, ASP48M-SI | TSSP48(M) |
| ASP60M, ASP60M-SI | TSSP60(M) |
| ASP72M, ASP72M-SI | TSSP72(M) |
| AP44, AP44-SI | TPP44 |
| AP67, AP67-SI | TPP67 |
| AP93, AP93-SI | TPP93 |
| AU29, AU29-SI | TUC29R |
| AU48, AU48-SI | TUC48R |
| AU60, AU60-SI | TUC60R |
| AU72, AU72-SI | TUC72R |
| AU29F, AU29F-SI | TUC29F |
| AU48F, AU48F-SI | TUC48F |
| AU60F, AU60F-SI | TUC60F |

10.0 General Information

The Applicant and Manufacturer have agreed to produce, test and label ETL Listed products in accordance with the requirements of this Report. The Manufacturer has also agreed to notify Intertek and to request authorization prior to using alternate parts, components or materials.

COMPONENTS

Components used shall be those itemized in this Intertek report covering the product, including any amendments

LISTING MARK

The ETL Listing mark applied to the products shall either be separable in form, such as labels purchased from Intertek, or on a product nameplate or other media only as specifically authorized by Intertek. Use of the mark is subject to the control of Intertek.

The mark must include the following four items:

- 1) applicable country identifiers "US" and/or "C" or "US", "C" and "EU"
- 2) the word "Listed" or "Classified" or "Recognized Component" (whichever is appropriate)
- 3) a control number issued by Intertek
- 4) a product descriptor that identifies the standards used for certification. Example:

For US standards, the words, "Conforms to" shall appear with the standard number along with the word, "Standard" or "Std." Example: "Conforms to ANSI/UL Std. XX."

For Canadian standards, the words "Certified to CAN/CSA Standard CXX No. XX." shall be used, or abbreviated, "Cert. to CAN/CSA Std. CXX No. XX."

Can be used together when both standards are used.

If all standards on the ATM have the same standard title, the shared title or its abbreviation may be used in place of the examples above. Example: "Medical Electrical Equipment" or "MEE"; "Information Technology Equipment" or "ITE"; "Audio/Video Information And Communication Technology Equipment" or "A/V ICTE".

Note: A facsimile must be submitted to Intertek, Attn: Follow-up Services for approval prior to use.

The facsimile need not have a control number. A control number will be issued **after signed Certification Agreements** have been received by the Follow-up Services office, approval of the facsimile of your proposed Listing Mark, satisfactory completion of the Listing Report, and scheduling of a factory

MANUFACTURING AND PRODUCTION TESTS

Manufacturing and Production Tests shall be performed as required in this Report.

FOLLOW-UP SERVICE

Periodic unannounced audits of the manufacturing facility (and any locations authorized to apply the mark) shall be scheduled by Intertek. An audit report shall be issued after each visit. Special attention will be given to the following:

1. Conformance of the manufactured product to the descriptions in this Report.
2. Conformance of the use of the ETL mark with the requirements of this Report and the Certification Agreement.
3. Manufacturing changes.
4. Performance of specified Manufacturing and Production Tests.

In the event that the Intertek representative identifies non-conformance(s) to any provision of this Report, the Applicant shall take one or more of the following actions:

1. Correct the non-conformance.
2. Remove the ETL Mark from non-conforming product.
3. Contact the issuing product safety evaluation center for instructions.

10.1 Evaluation of Unlisted Components

Because Unlisted Components are uncontrolled, and they do not fall under a third party follow up program, Intertek may require these components to be tested and/or evaluated at least once annually, more often for certain components, as part of the independent certification process. The Unlisted Components in Section 5.0 require testing and/or evaluation as indicated.

The Applicant will be notified, in writing, via the applicable contact methods, as defined in Section 1.0, when these components must be selected and sent to Component Evaluation Center (CEC) for re-evaluation.

Due to particular testing requirements, some components may be requested to be shipped to specific labs. Thus, specific shipment destination(s) for each sample will be provided in the written notification.

Managing CEC Location:

Intertek Testing Services Shenzhen Limited Guangzhou Branch

ETL Component Evaluation Center

Room 02, &101/E201/E301/E401/E501/E601/E701/E801 of Room 01 1-8/F., No. 7-2,
Caipin Road, Science City

GETDD Guangzhou, Guangdong, China

Attn: Ms. Joey Kuang

Sample Disposition: Due to the destructive nature of the testing, all samples will be discarded at the conclusion of testing unless, the manufacturer specifically requests the return of the samples. The request for return must accompany the initial component shipment.

11.0 Manufacturing and Production Tests

The manufacturer agrees to conduct the following Manufacturing and Production Tests as specified:

Required Tests

None

