

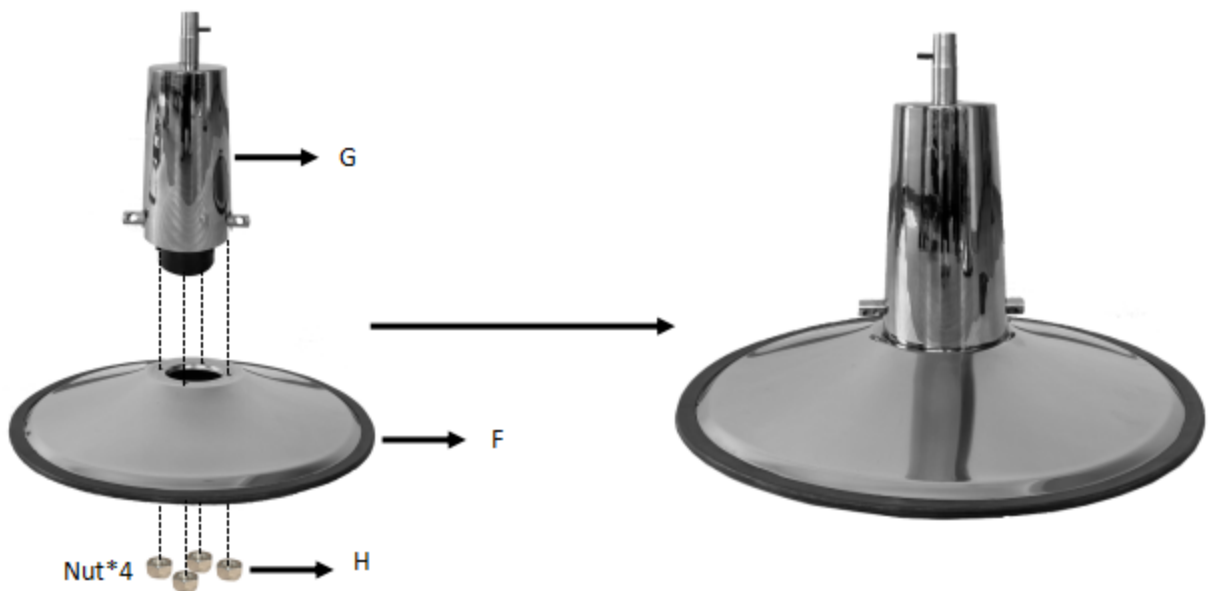
# Barber Chair Instruction



**Step1:**Check all parts you received.

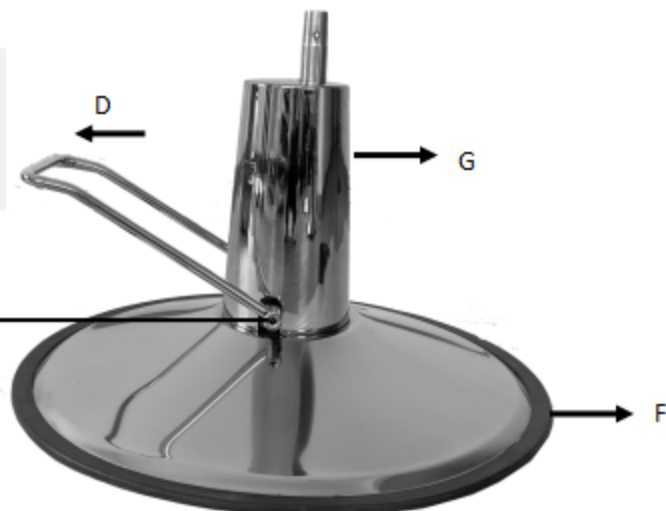
					
<b>A.1PC</b>	<b>B.1PC</b>	<b>C.2PCS</b>	<b>D.1PC</b>		
					
<b>E.1PC</b>	<b>F.1PC</b>	<b>G.1PC</b>	<b>H.4PCS</b>	<b>I.1PC</b>	<b>J.1PC</b>

**Step2:**Insert "G" into the holes on top of "F".Tighten and locking by "H".

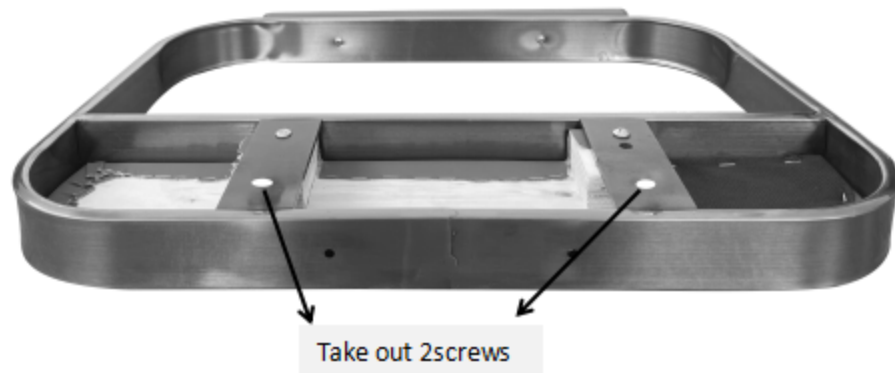


**Step3:**Insert "D" into "G",tighten the screws on the both sides.(please noted the direction of "D").

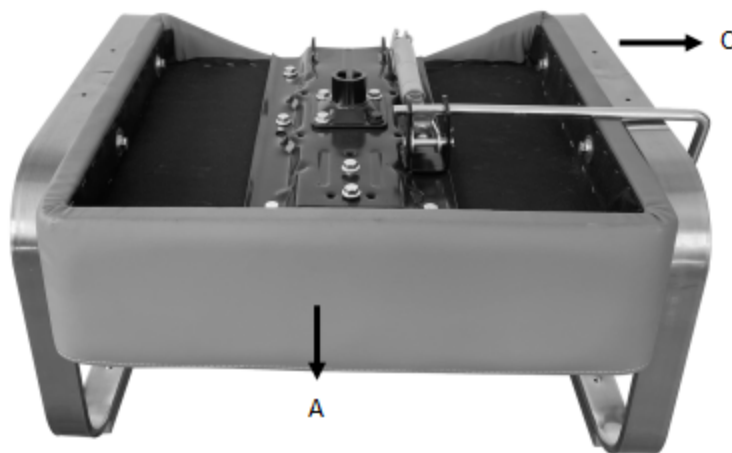
if its hard to insert "D"into "G",please loosen the screw on the "G" a little.



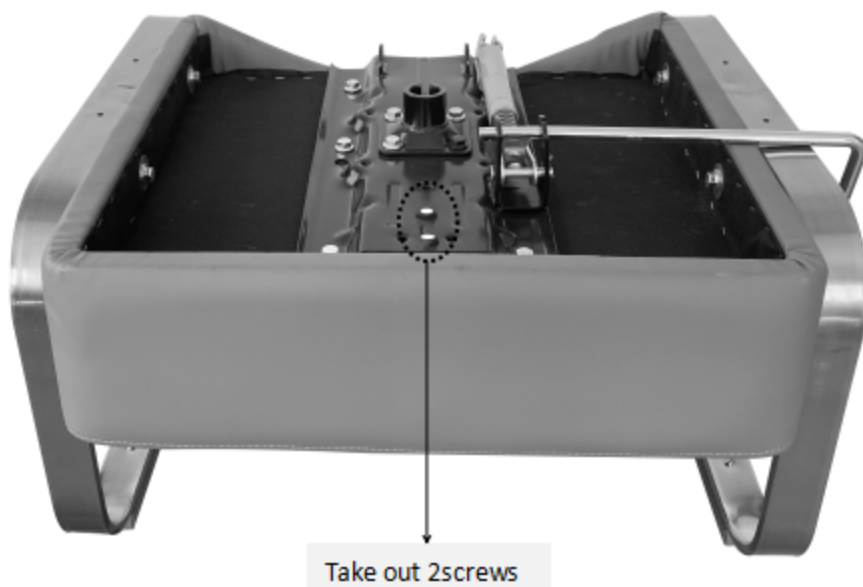
**Step4:**Unscrew 4 screws previously assembled under the “C”(2pcs) .



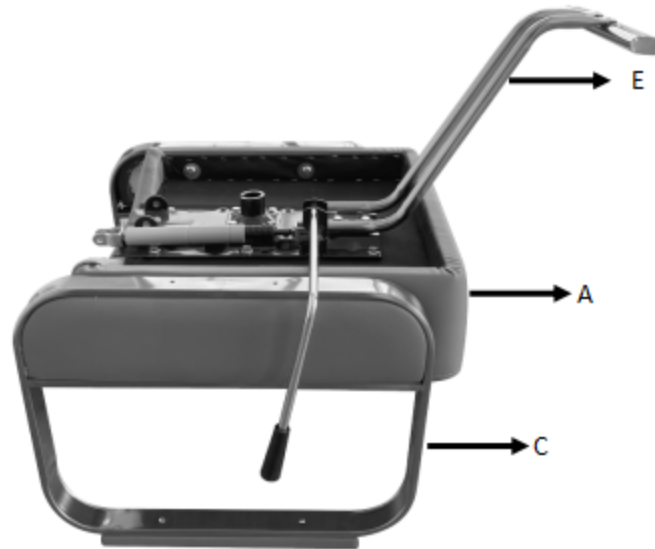
**Step5:**Attach 2pcs “C” to part “A” by those screws,tighten.



**Step6:**Unscrew 2 screws previously assembled under the “A”.



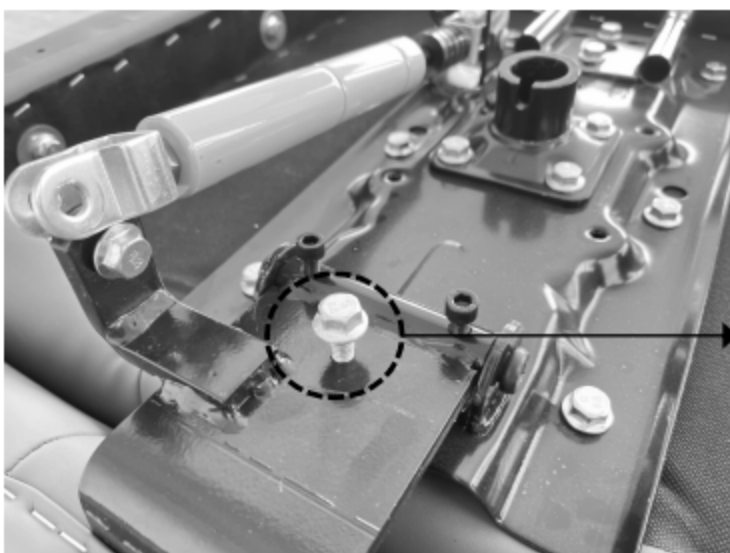
**Step7:**Attach "E" to part "A" by those screws,tighten.



**Step8:**Loosen the 4 embedded black screws on the round tube of the backrest "B" under the bottom of the backrest iron.

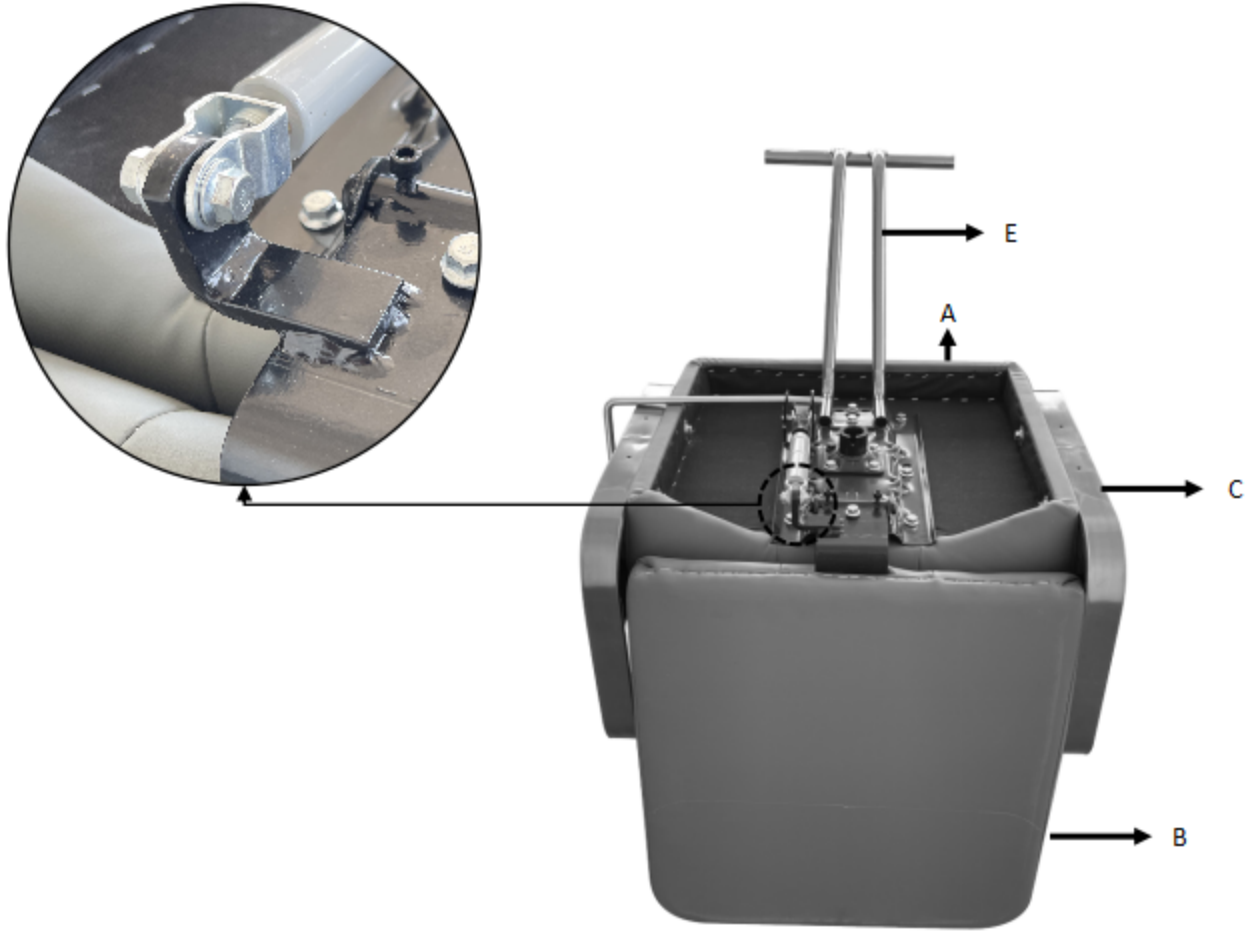


**Step9:**Attach the backrest to the assembled seat of chair ,make sure the angle of backrest correct, Tighten.



Please notice that the more you tighten the screw in, the greater the Angle between the back and the seat cushion; When youloosen this screw outward, the smaller the angle between the back and the seat cushion (closer to 90 degrees).

**Step10:**Loosen nut and bolt on the iron of backrest,Link gas pump and the iron on backrest by the nut and bolt ,tighten.



**Step11:**Put the assembled chair on the top of assemble base like picture.



Noted:the tray on the set plate must be aligned with the black pin of hydraulic.

