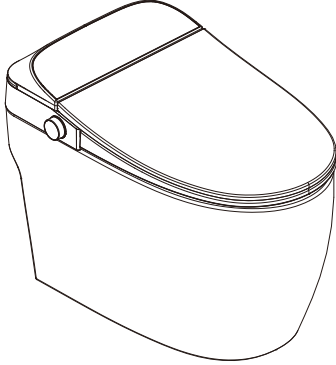


Smart Toilet USER MANUAL

Model No: B85G-A
SKU:WF314234AAA



Edition: V 2023.09.21

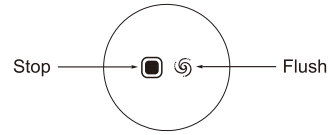
B05231539

- Before beginning installation, read all instructions first. Save these instructions for future use.

Product functions

Heated Seat, Soft Night Light, Auto Flush, Foot Induction Flush, Power-off Flush, Adjustable Water Temperature, Adjustable Seat Temperature.

Side button using guide



Please follow up the process below before product operation.

1. Turn on the valve.
2. Plug the power cord into electrical inlet.
3. If power button indicator lights, the bidet seat is good to use.

Standby Model

In the off seat state, closing the seat temperature heating function is deemed to be standby.

Seat Temperature

In the state of leaving the seat, press and hold the knob for 3 seconds to change the status of the seat temperature heating switch once. The buzzer sounds once, the knob light is a purple breathing light, and the seat ring heating is turned on; the buzzer sounds twice, the knob light is a white breathing light, and the seat ring heating is turned off.

Power off Flush

Short press the knob to flush once during power off.

Knob Flush

With no cleaning or drying function, short press the knob to flush once.

Foot sensing flush

When leaving the seat, put your foot hold for more than 1 second in the foot sensing area, then will flush 1 time automatically. When seating, can't flush automatically.

Automatic Flushing

After sitting for more than 10 seconds, it will automatically flush once after leaving the seat.

Night light

Clockwisely rotate the side knob, night light is turned on, Anticlockwisely rotate the side knob, night light is turned off.

Packing list

No.	Name	Quantity	No.	Name	Quantity
1	Smart Toilet	1	5	Flange	1
2	User Manual	1	6	G1/2 To G3/4 Angle Valve	1
3	Water Flow Restrictor	1	7	9V Battery	1
4	Battery Box	1			

1

Precautions for use

⚠ Attention	It may cause minor injury or damage, be sure to always pay attention.
🚫 Forbiddance	Do not operate forbidden content.
📌 Enforcement	Must comply with the enforcing content.
🔌 Ground	Connect the ground properly

⚠ Warning	
🚫 Do not disassemble	It is absolutely forbidden to disassemble, repair and transform this product by yourself. It may cause fire, electric shock and other accidents.
🚫 No watering	Do not pour water or detergent on the power plug. It may cause fire, electric shock and other accidents.
🚫 Forbiddance of fire	Do not bring lit cigarettes or burning species close to the product. It may cause a fire.
🚫 Forbiddance	Please do not continue to use the product when the product fails. Please contact the after-sales service staff for maintenance. When the following situation occurs, please remove the power plug and close the inlet angle valve. 1. Leakage from the inside of the product line; 2. The product is unusually hot; 3. The product makes an abnormal sound and smell; 4. The product is burnt. If the product is still used in the event of malfunction, it may cause problems such as fire, electric shock, water inflow in the room. (The normal life of this product is six years, the continued use beyond the service life may lead to accidents.)
🚫 Forbiddance	Only tap water can be used. Otherwise may cause infectious dermatitis and other diseases.
🚫 Forbiddance	Do not use loose power outlet. It may cause a fire or electric shock.
🚫 Forbiddance	Please use the power outlet within the specified conditions (110-120V~, 13A, 60Hz socket). Do only use 110-120V~ power supply. Using power beyond the socket regulations may cause the socket to heat up and cause a fire.
🚫 Forbiddance	Do not damage the power cord and seat wire. 1. Do not damage, do not process, do not heat; 2. Do not force bending, do not curly tied, do not pull; 3. Do not put heavy objects on the power cord and the seat lid connection, ignoring product damage and continuing to use may result in fire, electric shorts and other conditions.
📌 Enforcement	1. This product belongs to the electrical products, do not put it in places where there is water or the places of high humidity. When used in the bathroom, please install ventilation fan or ventilation port to keep the bathroom in good air circulation. Otherwise, it may cause a fire or electric shock. 2. If the power cord is damaged, do not disassemble it yourself and must be replaced by the manufacturer or its service department or relative department.
🔌 Grounding	Please check if grounding is done. A product that is not grounded may cause an electric shock in the event of a malfunction or leakage.

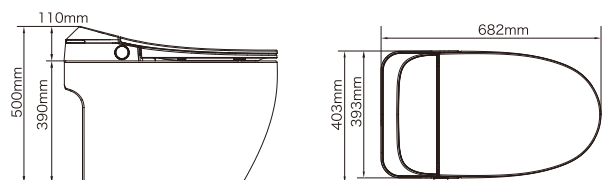
⚠ Attention	
🚫 Forbiddance	Forbiddance sitting on the seat for a long time, the seat temperature should be adjusted in low-grade, please note that low-temperature burns. The following personnel should set the seat temperature at low-grade when using the toilet. 1. Children and elderly people who cannot adjust the temperature to the right degree. 2. Patients, persons with disabilities and other people who can not move freely. 3. Lethargic crowd because of taking hypnotics (Such as sleeping pills, cold medicine, etc.) deep drinking and over fatigue.
🚫 Forbiddance	Do not forcibly stretch the connecting pipe of the water supply pipe. Otherwise it may cause water leakage.
🚫 Forbiddance	Do not rely on the seat cover or forcibly press the control panel. Otherwise it may result in malfunction or breakage. Forced application of force may cause seat cover and control panel damage, resulting in personal injury.
🚫 Forbiddance	Do not place containers containing liquid such as vials, cups, cosmetics, pharmaceuticals, etc. or small metal objects on top of the product. Inadvertent entry into the product may result in fire or electric shock.
🚫 Forbiddance	Do not place the product in direct sunlight, otherwise the appearance of products may be aging deformation.

2

Technical data

Rated voltage	110-120V~	
Rated frequency	60Hz	
Rated power	54W (15°C±1°C inlet water temperature)	
Length of wire	1.1m	
Water supply mode	Directly connected to the channel	
Ambient temperature	About 3°C to 40°C	
Water supply temperature	About 3°C to 35°C	
Water pressure range	0.12MPa-0.8MPa	
Safety devices	Electrical leakage protector, seated sensor	
Thermal seat	Seat temperature	Two grades (Room temperature or 37°C)
	Seat heater	45W
	Safety devices	Temperature sensor, temperature fuse
	Switch structure	Damping slowdown

Product size



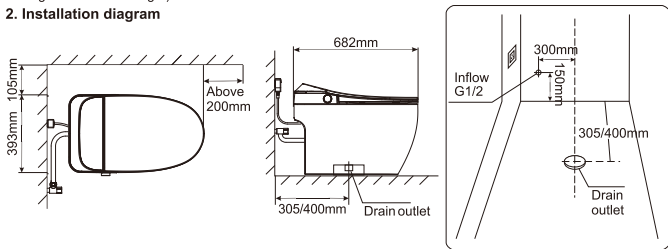
3

Precautions before installation

1. Installation space

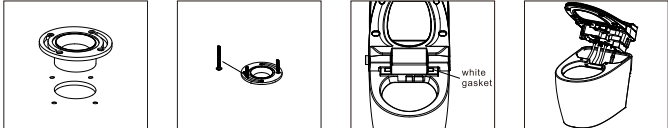
- ① To ensure that there is enough space for installation at the same time, please confirm the door switch does not affect the product's installation. The distance of water inlet pipe to the ground should be more than 150mm.
- ② Before installation, please confirm the location of the outfall and wax seal (For specific location please refer to the logo shown on the right)

2. Installation diagram

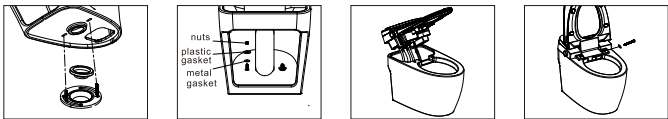


Product installation methods

1. The installation of flanges and ceramics



1. According to the position of the four screw holes of the flange, make four holes around the floor drain outlet, and drive in expansion screws to fix the flange.
2. Insert the toilet mounting bolts into the grooves of the flange, then align the flange with the sewage outlet and tighten the screws to fix it.
3. Open the electronic cover, take out the white gasket, loosen the fixing screws with a screwdriver, and separate the electronic cover from the toilet.
4. Lift the cover up a little from the back of the toilet, so that you can loosen the braided tube and wires behind the electronics cover.



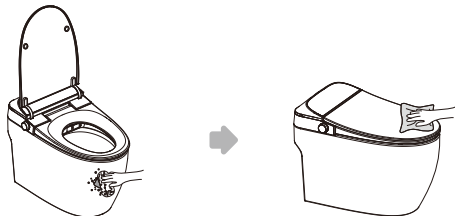
5. Put the flange sealing ring on the flange, and then align the mounting bolts through the mounting holes at the bottom of the toilet.
6. Put metal gaskets, plastic gaskets and nuts on the bolts in sequence, and then tighten the screws to fix them after the installation is stable. (Please process this installation from the top of the toilet bowl.)
7. Reinstall the braided tube as in step 4 and connect the wires.
8. Adjust the position of the electronic cover, tighten the screws to fix it, and the installation is complete.

2. Connect the water supply pipe

⚠ Before installing the valve, please drain all the impurities and sewage in the pipes. (Discharge the water for 1 to 2 minutes)

- ① When the water supply valve is closed, remove the old angle valve and replace it with the machine-equipped angle valve. Please use the supply hose included. Do not use the old one.
- ② Connect the supply line with inlet valve.
- ③ After the machine is installed, open the knob to detect no leakage at A, B, C.
- ④ Inspection is correct, plug in the power supply, press the "manual flush" button to confirm the siphon effect of sewage.

4



2. Seat toilet management methods in winter

In order to prevent freezing in winter, if there is no heating device inside the toilet, please wrap the connecting pipe with cloth or use other insulation materials for insulation.

When the ambient temperature is below 0°C.

1. Stop using the product;
2. Pull out the power plug or press the reset button on the leak protection;
3. Close the inlet valve.

• Note:

Please tighten the filter firmly, otherwise it may cause water leakage.

Do not grab the filter net too strongly as it may distort or rupture.

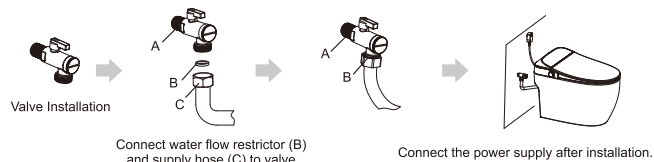
When blockage blocks the filter, the pressure of the flushing water may not be enough, so please clean the toilet regularly once in three months.

We recommend that you do not use detergent when cleaning. Clean it directly with tap water.

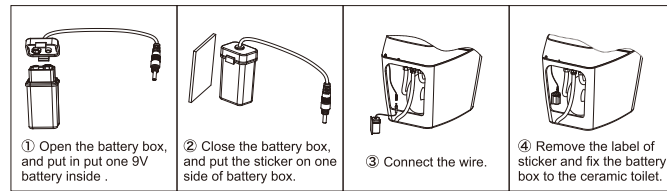
How to deal with common problems

Problems	Check	Handling
Functions does not work at all.	The seat sensing area uses cloth cover, mat and other items.	Please remove the cloth cover, mat and other items.
	Power is cut.	Please wait for power recovery.
	Socket is loose or poor contact.	Plug in, ensure good power supply.
	Whether the leakage protection reset button is pressed.	Please press the reset button on the leak protection.
Toilet Seat The heated seat is not heating.	Thermal seal's heating strength is set in the low or off state.	Turn the seat temperature up to high.
	The toilet is set in the energy-saving state.	Please exit energy-saving state.
	Whether the power outage.	Please wait for power recovery.

6



3. Battery Installation



Product cleaning and maintenance methods

Warning: waterproof toilet cleaning precautions

- Do not clean the product with your hands in case of damage or failure, to avoid secondary failure.
- Do not use hydrochloric acid detergent, thinner, bleach, benzene or strong detergent to clean the surface of the toilet. Do not allow pesticides, air fresheners and deodorants to stick to the toilet bowl.
- The body discoloration, cracking and damage caused by the use of the above-mentioned reagents, even within the warranty period also need to paid the services.

1. Filter cleaning

When the water supply valve is closed, cut off the machine water supply, do the following operation.

- ① Shut off inlet valve by clockwise rotation
- ② Unscrew water filter by a coin or slot screwdriver
- ③ Take out water filter and clean by toothbrush or other cleansers. Mount water filter back after cleaning.
- ④ Turn on inlet valve by counterclockwise rotation



Toilet appearance cleaning method diagram

- ① Please unplug the power plug from the socket or press the reset button on the leak protection.
- ② Use a soft cloth or sponge stained with neutral detergent to clean the machine.
- ③ Wipe the whole machine with cotton cloth after cleaning.

5

印刷材质：A4纸正反面