



Please scan the QR code above to view the installation video, or search the following link to view the homepage.  
Facebook Link: <https://www.facebook.com/czbidet>

If you encounter any after-sales problems, please contact us immediately, and our customer service will reply within 24 hours to ensure you have worry-free after-sales service.

# Intelligent toilet Operation instruction

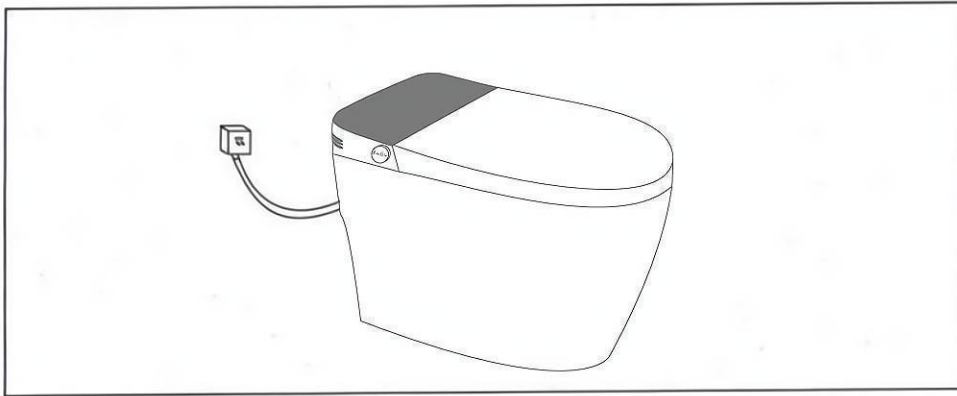
- Thank you for choosing our product. please read the instruction carefully before installation.
- To ensure that timely service is available for you, please keep the manual for future reference.



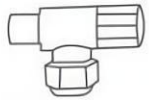
Thank you for choosing our smart toilet. Please read this manual carefully and use it correctly. Please keep this manual properly and read it carefully before use.

※ note: this instruction manual contains after-sales service guide.

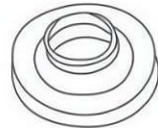
## 01 Package Contain



Angle valve assembly



Sealing flange



user's manual



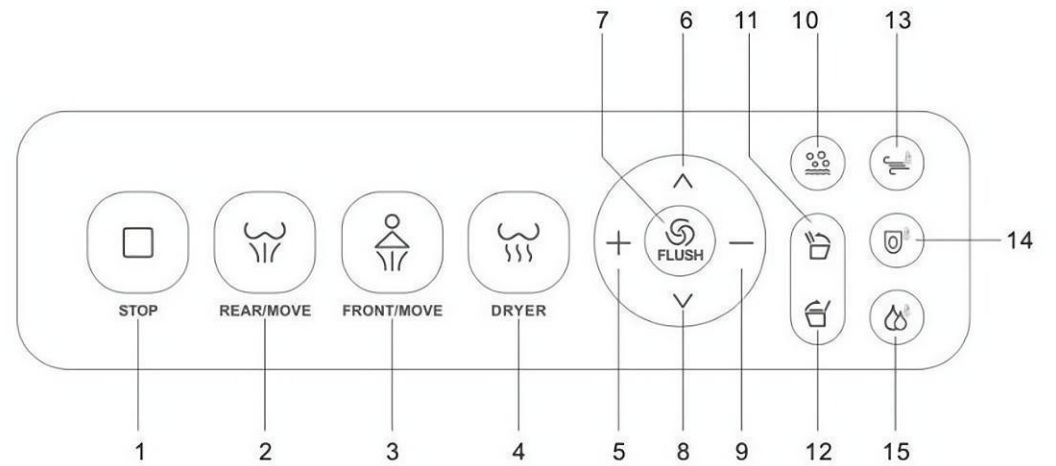
Remote control



(2 AAA Batteries not Include)

## 02 Remote Controller

### CONTROL PANEL FEATURES



1.Stop

2.Rear/move

3.Front/move

4.Dryer

5.Clean

6.Forward

7.Flush

8.Backward

9.Clean

10.Bubbles

11.Flip seat

12.Flip top cover

13.Wind temperature

14.Seat temperature

15.Water temperature

# PRODUCT INSTALLATION

## Construction Points and Names of Departments

The picture is shown in Figure 1. This picture shows the main components and construction points in the construction.

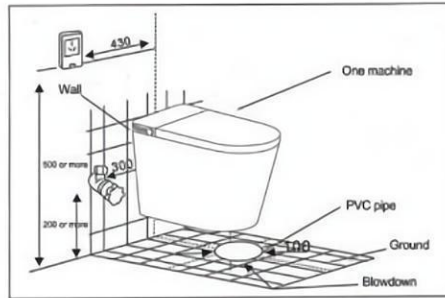


figure 1

## 1.Preparation before installation

User-supplied tools: adjustable wrench, woodworking spirit level, Phillips screwdriver, glass glue gun, glass glue, raw material tape, tape measure, right angle ruler, electric drill, drill bit

## 2.Installation steps

Mark the center line of the drain on the ground, and install the water inlet angle valve at a suitable position on the wall according to the size of the toilet.

- Install the water inlet angle valve (see Figure 1)
- Construction and installation instructions (see Figure 2, Figure 3, and Figure 4)
  1. Align the wall with the centerline of the drain pipe (there are two options: 305mm and 400mm).
  2. Draw the position of the center hole (select the installation hole according to the actual needs).
  3. Gently turn the toilet sideways, and press the side of the accessory seal ring with mud to the sewage drain at the bottom of the toilet.
  4. Align the toilet drain outlet with the vertical position of the drain outlet.

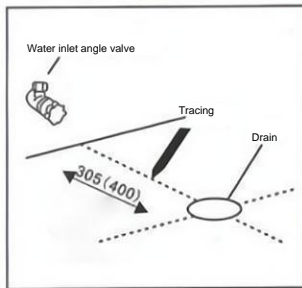


figure 2

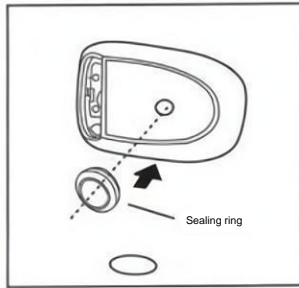


figure 3

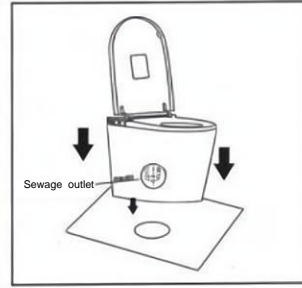
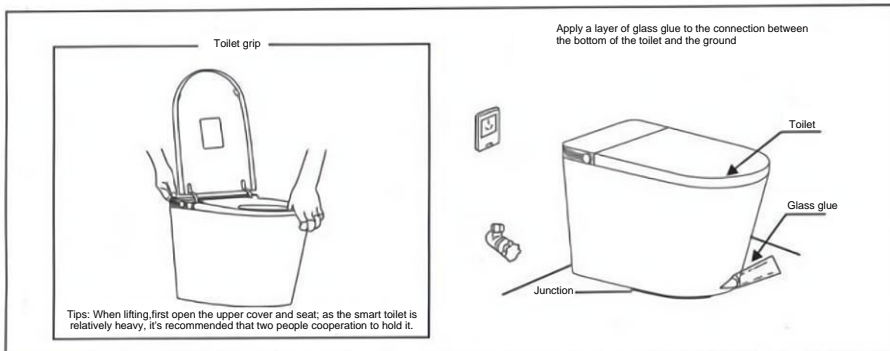


figure 4

## ● Installing toilet



## Tips 1:

1. The newly-renovated house is liable to damage the machine and affect human health due to residual debris such as mud and sand in the pipeline. Before installing, drain off the dirty water in the pipeline.
2. Please choose a professional installer to install this product. After installation, please carefully check whether each part is installed correctly. After 48 hours, the glass glue is completely cured before use.

## Tips 2:

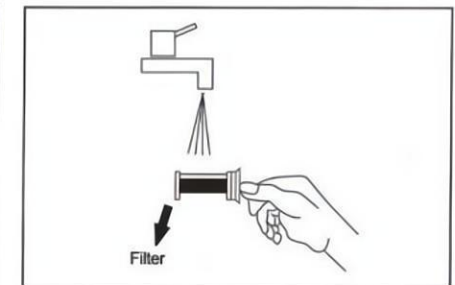
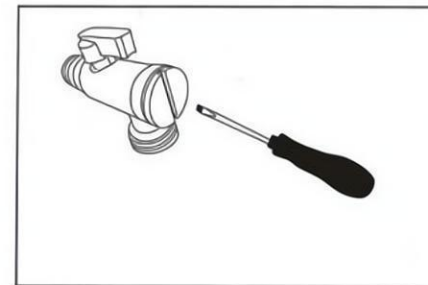
After connecting the water pipe to open the angle valve, if there is water flowing from the nozzle in the new product, please plug it in and it will automatically reset the nozzle and stop the water. Be sure to turn off the power and water before disassembling.

1. In the event of a power failure during the cleaning process, please do not move the spray boom. After a call, the function returns to normal after a self-test.
2. Be sure to use the special water inlet angle valve and other accessories provided by our company.

## Caveat:

1. Smart toilet accessories have been debugged before leaving the factory, and unauthorized disassembly is strictly prohibited. Please use the fittings and pipes provided by our company. Old fittings and pipes cannot be reused. If you have any questions, please contact your local dealer or our after-sales service department.
2. All contents in this instruction manual are based on the latest situation of the product at the time of printing. Subject to change without notice.

## CLEANING ANGLE VALVE



Turn off the angle valve switch, use a slotted screwdriver or coin tool to unscrew the back cover switch, remove the filter and clean