

# Smart Toilet Instructions

## ■ Safety Note

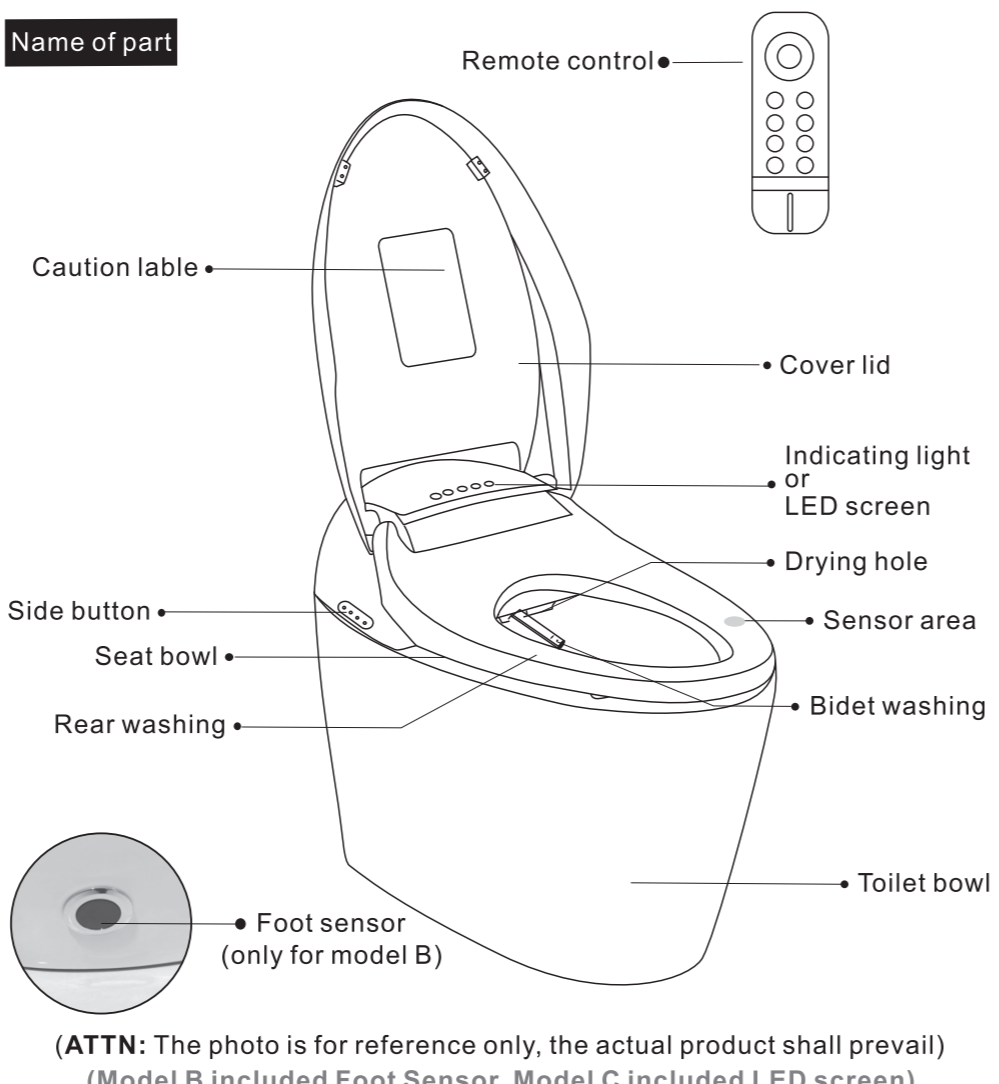
Please read and follow the instructions carefully for installation. Save the instructions in proper place and do not lose it. In order to ensure the safety and avoid the loss, please follow the instructions as below.

**Warning** Show how to avoid the injury.

**Caution** Show what you should follow and not to do.

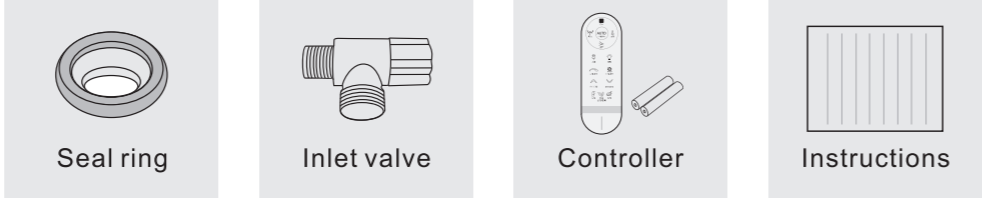
| Sign | Note   |
|------|--|
|      | Forbidden  |
|      | Must Follow  |
|      | <b>WARNING</b>   |
|      | <ul style="list-style-type: none"> <li>• Dismantle, repair or remodel the product are forbidden or else you will get an electric shock or causes fire.</li> <li>• Drop the lighting cigarettes and burning objects into toilet bowl are forbidden or else you will get an electric shock or causes fire.</li> <li>• Do not touch the plug with wet hands to avoid getting an electric shock.</li> <li>• The portable or tollering plug is forbidden or else you will get an electric shock or causes fire.</li> <li>• Do not replace the wire yourself while it is broken. The correct way is to call the professional maintenance staff to handle it.</li> </ul>  |
|      | <ul style="list-style-type: none"> <li>• Smart toilet belongs electric product. Do not use it in wet environment.</li> <li>• Make sure the voltage and plug can match the product or else it would be broken.</li> <li>• Drop the water and detergent on the seat cover and plug are forbidden or else you will get an electric shock or causes fire.</li> <li>• Do not touch the plug with wet hands to avoid getting an electric shock.</li> <li>• The portable or tollering plug is forbidden or else you will get an electric shock or causes fire.</li> <li>• Do not replace the wire yourself while it is broken. The correct way is to call the professional maintenance staff to handle it.</li> <li>• Make sure your ground lead wire can match the standard of law or else it is forbidden to use the product.</li> <li>• Ensure install the product with the pipe and fittings which is combined in the packing or else the toilet would be leaking.</li> <li>• Ensure the power and water valve is off while installing, dismantling and repairing.</li> <li>• Suggest clean out the water from product while room temperature below zero so as to avoid freezing.</li> <li>• People with disabilities or mental disabilities require use the product under supervision.</li> <li>• Require the cardiopath use the product with caution.</li> <li>• Do not allow children to play with the product.</li> </ul> |
|      | <ul style="list-style-type: none"> <li>• Cut the power and pull out the plug during thunder.</li> <li>• Do not wipe the product with thinner, petrol, detergent and insecticide.</li> <li>• Adjust the seat temperature to be minimum while seat on toilet cover in a long time, or else the toilet would be leaking.</li> <li>• Do not turn the product upside down while the power is working but without water supply or else the heating device would be broken.</li> <li>• Make sure the input water is clean. Do not use the process water, waste water and seawater and re-collected water.</li> <li>• Do not place the product in direct sunlight or else the product would discolor and causes burns.</li> <li>• Do not lean your back to the cover while it is working or else the cover would be broken.</li> <li>• Do not press the cover strongly or else the soft down device would be broken.</li> </ul>  |

## ■ List

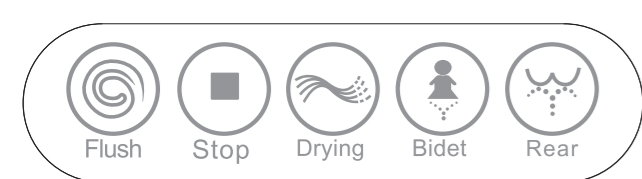


(ATTN: The photo is for reference only, the actual product shall prevail)

## ■ Fittings

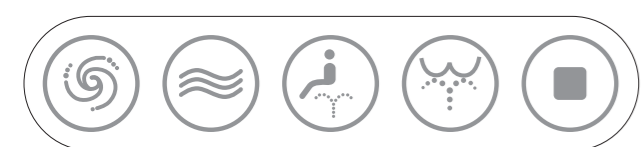


## ■ Side Button Instructions



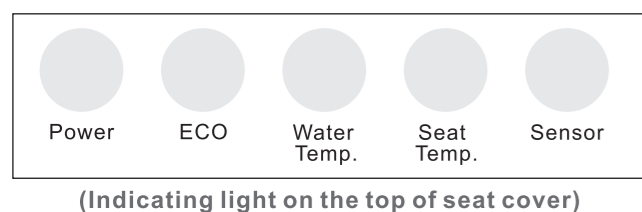
### ■ Drying

Press this button to start drying while there is people sitting on the seat cover bowl and you can cut the running by **Stop** button.



Press this button to start drying while there is people sitting on the seat cover bowl. The drying will finish in 3 minutes. It also can be stopped by **Stop** button.

## ■ Indicating Light Instructions

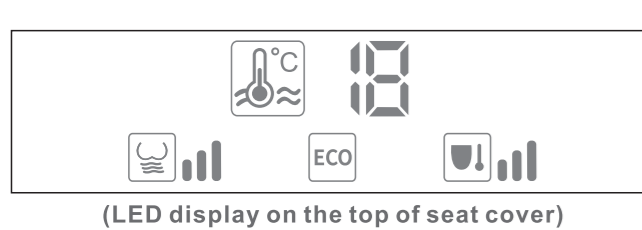


(Indicating light on the top of seat cover)

### ■ ECO light

The product is under energy saving mode when the light is on. The product is out of ECO mode when the light is off.

## ■ LED Display Instructions



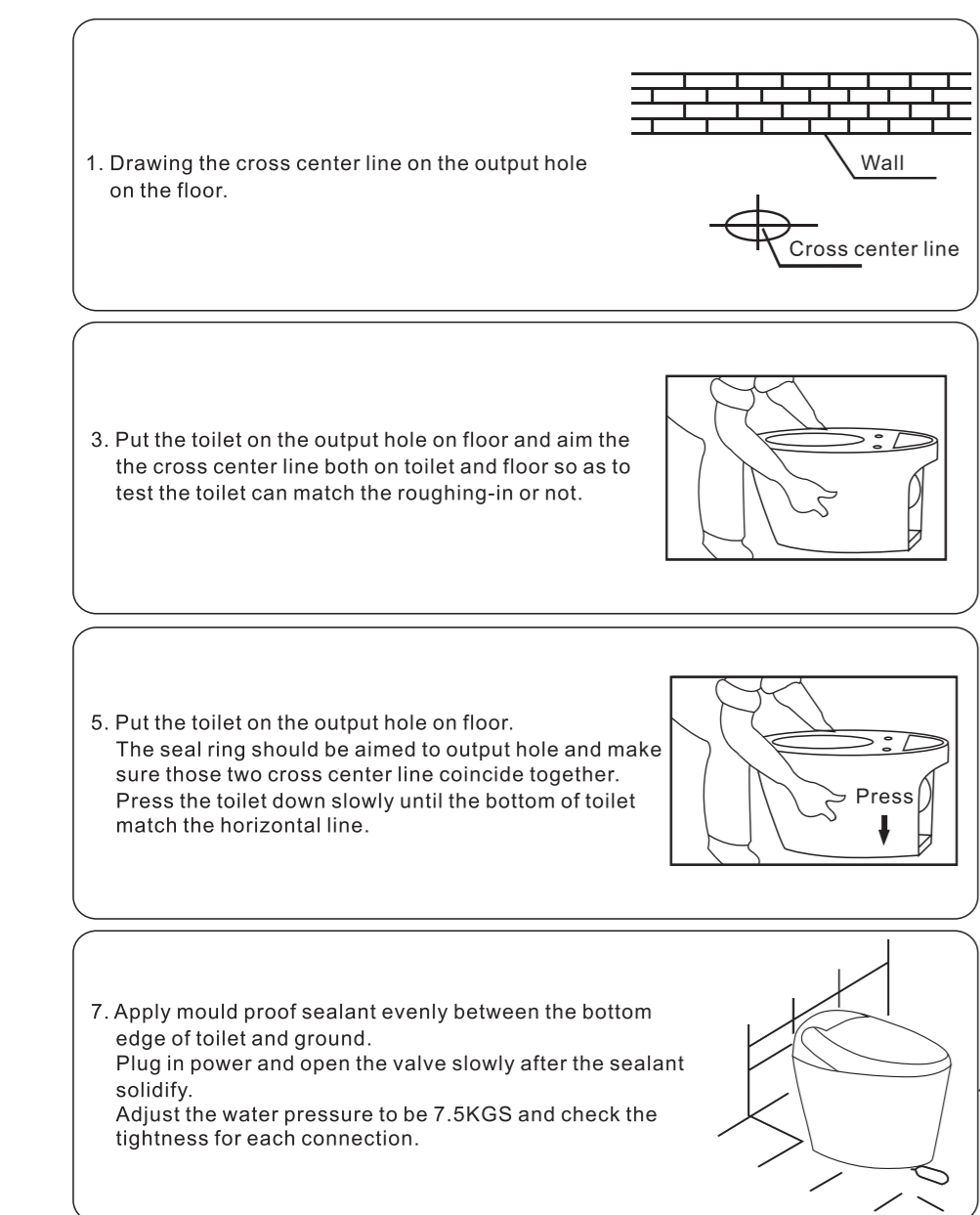
(LED display on the top of seat cover)

# Smart Toilet Instructions

## ■ Installation of smart toilet

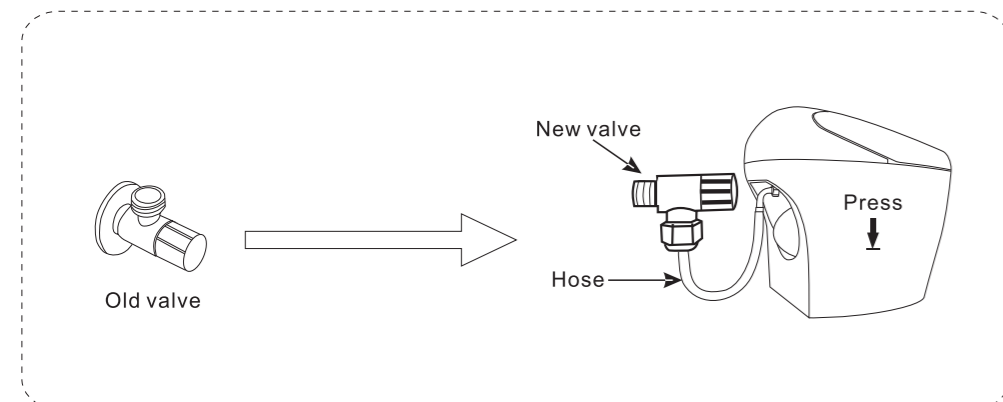
**CAUTION** The electric plug must follow the rule as below:  
• The length of wire is 1.5m at least and the plug should be close to product for easy installation and dismantling.  
• The plug and product should stay away from bathtub.  
• Suggest to use the water proof plug and do not use the portable plug.  
• Install and use the product in correct way or else you will get electric shock or causes fire.

## Step of Installation



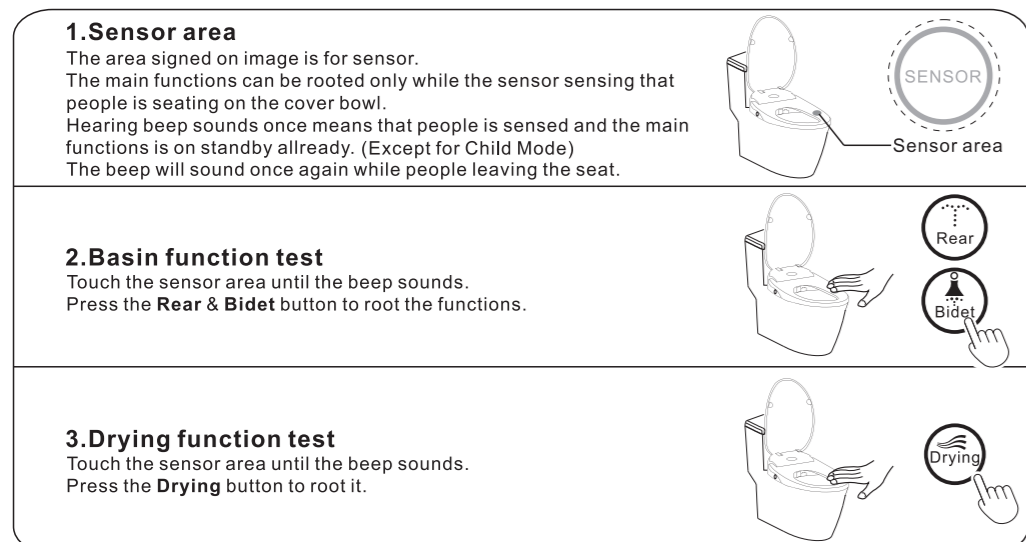
## Installation of hose

1. Replace the new valve and connect the hose to it. The other side of hose connect to the filter.
2. Plug in power and adjust the water pressure to be less than 7.5KGS by valve.

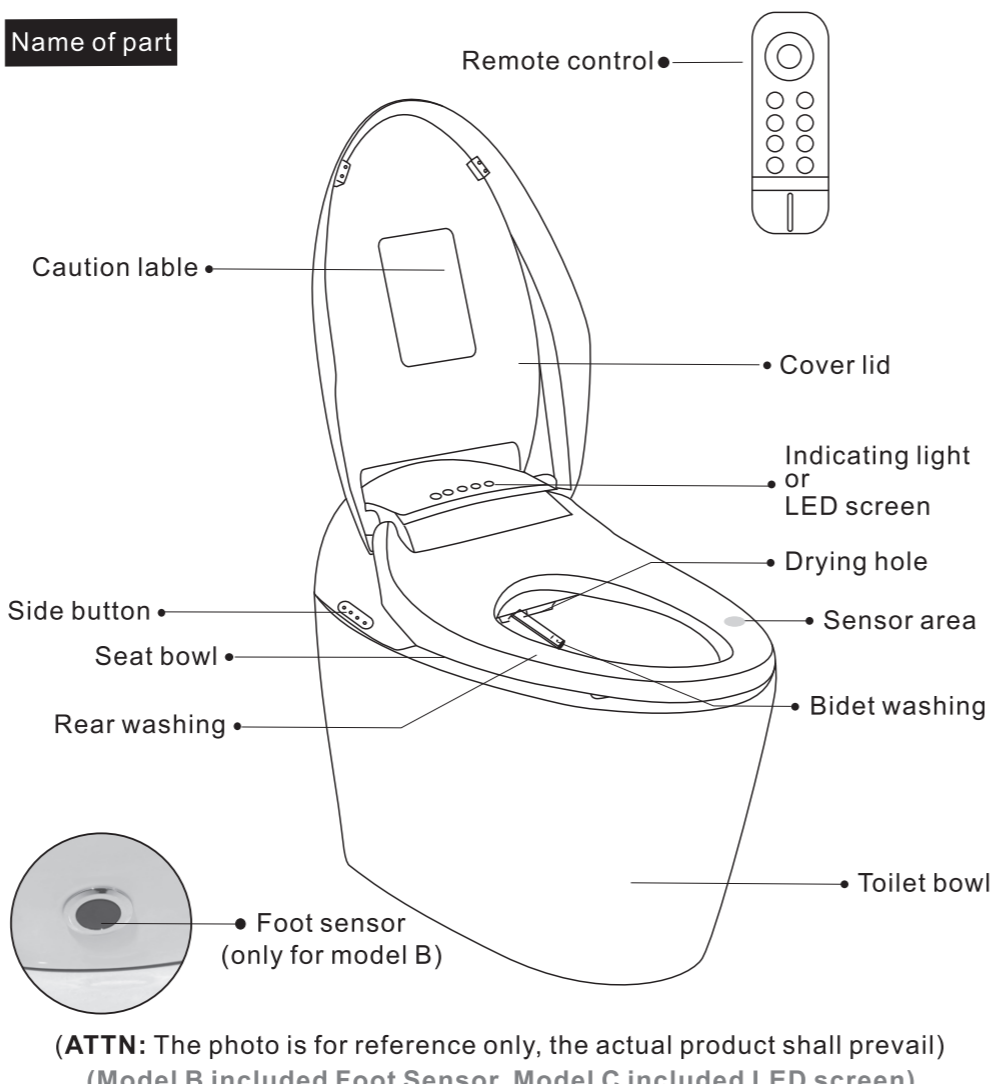


## ■ Using test

**First time to open inlet valve and plug in power**  
The distribution valve and the washer perform will reset and self-check (extend and return). All lights will be on. The sitting temperature, water temperature, wind temperature, water pressure and tube position are restored to the factory setting mode (all gear positions are mid-range) while sounds "DING". And the toilet will enter standby after self-checking finished.

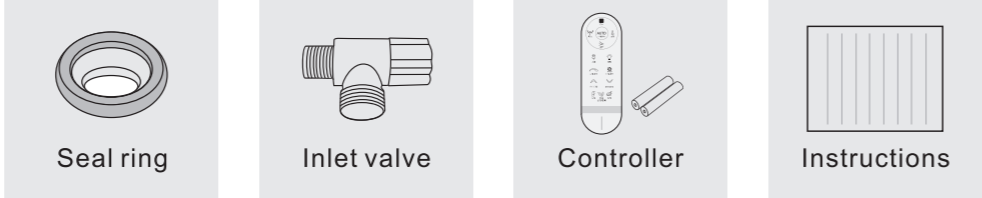


## ■ List



(ATTN: The photo is for reference only, the actual product shall prevail)

## ■ Fittings

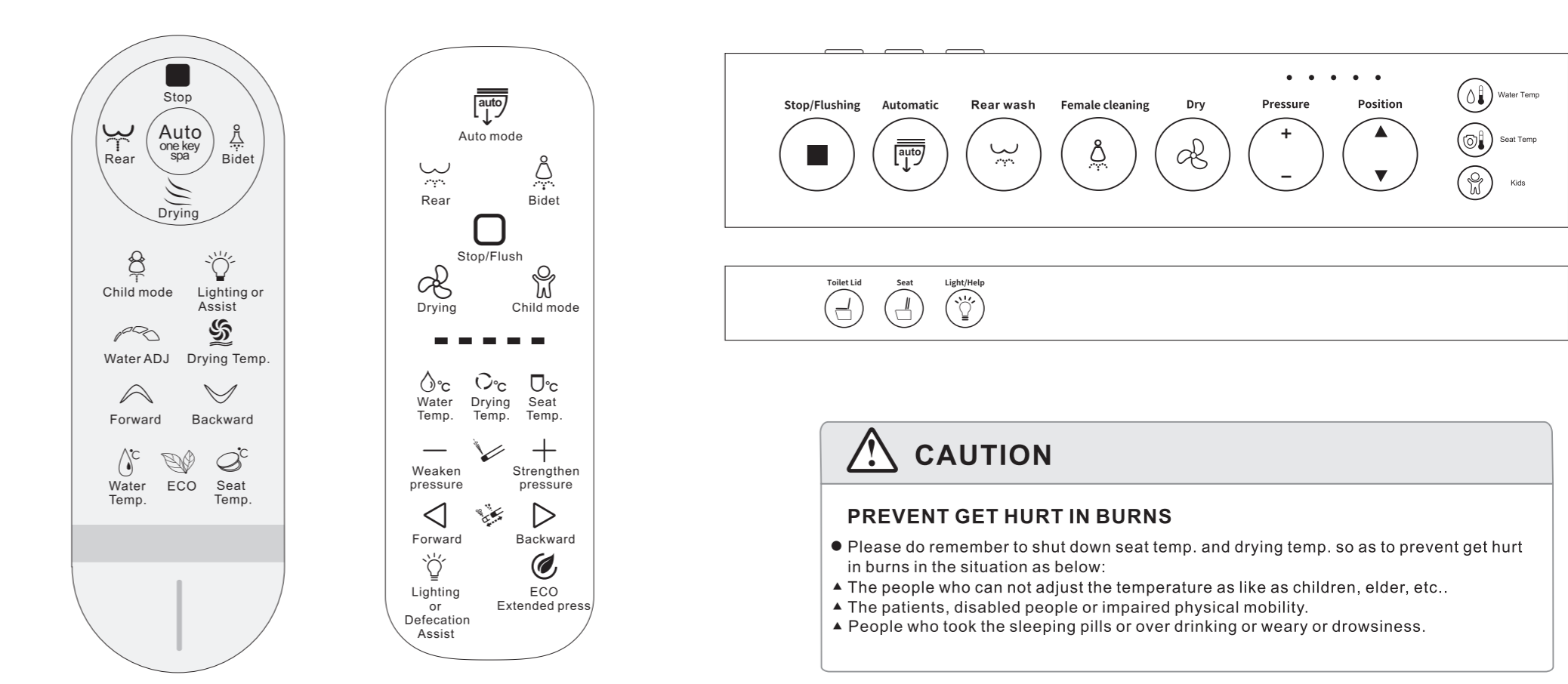


# Smart Toilet Instructions

## ■ Remote Control Instructions

**Note:** Please pair the code following the way below if the controller is not working at the first time in use.

- Press on side button both **Stop** and **Bidet** for 3-5 seconds. Press any button on controller when you hear a beep sounds.
- Press any button on controller when you hear a beep sounds.
- The code will be paired when hear a beep sounds again.



## SHAPE A

(The actual product shall prevail)

## SHAPE B

### ■ Rear

The nozzle will start rear washing by press this button while people sitting on the seat cover bowl. The washing will finish in 2 minutes. It also can be stopped by **STOP** button. While the rear washing is running, press this button can root the moving mode. During the washing, you can adjust the strength of spray. The washing will stop itself after people leaving the seat.

### ■ Auto one key spa

Press this button to root auto function while there is people sitting on the seat cover bowl. Includes 30s rear washing, 30s moving mode and 2mins drying. The working will stop itself or be ended by **Stop** button. This function is convenient to elders and children. Press this button after pressing **Bidet** button, the auto bidet washing will be rooted. The auto function will be off working while people left.

### ■ Child mode

Press this button to root auto washing for child. Includes 15s rear washing, 15s moving mode and 1mins drying in low strength grade. The working can be ended by **Stop** button. This function can be rooted without seating on the sensor area.

### ■ Forward & Backward

The position of nozzle can be adjusted by these two button while the washing function is working.

### ■ ECO & Extended press

Press once to root the product. Extended press to shut down the power. Press once to root the 8 hours electric save mode while the power is on. The electric save mode will be off in 8 hours or be off while there is people sitting on the seat cover.

## ■ Body Identification

### ■ Feet Sensor Flushing

While there is on people sitting on the toilet bowl seat, it can flush once after your feet meeting the area of sensor.

### ■ Feet Sensor Cover

While there is on people sitting on the toilet bowl seat, the cover can be opened by meeting the area of sensor. The cover will close itself in 1.5 minutes while there is not any other operation.

# Smart Toilet Instructions

## ■ Routine maintenance

### ■ Surface cleaning

1. The surface can be cleaned by sponge, soft rag with neutral detergent.
2. Do not wipe the product with thinner, petrol, detergent and insecticide.

### ■ Battery replacing

1. Turn off the power.
2. Hold the both sides on bottom of cover with hands and pull the cover out of toilet.
3. Take the battery out of box carefully.
4. Replace the battery.
5. Put the box back and install the cover back.

### ■ Nozzle cleaning

1. Prepare the toothbrush and soft towel.
2. Press the **Rear** or **Bidet** button and clean the nozzle during it comes out.
3. Press the **Stop** button after finish cleaning.

## ■ Specification

| Name           |                      | Smart Toilet                        |                         | Length of wire |                                     | 1.5m                                  |  |  |
|----------------|----------------------|-------------------------------------|-------------------------|----------------|-------------------------------------|---------------------------------------|--|--|
| Voltage        |                      | 110V 50/60Hz                        |                         | Rated power    |                                     | 1150W (Inlet Temp 15°C±2°C, 0.2MPa)   |  |  |
| Washing Device | Inlet Water Temp.    | 1°C-30°C                            |                         | Drying         | Speed                               | ≥4m/s                                 |  |  |
|                | Inlet Water Pressure | 0.15-0.75 MPa                       |                         |                | Temp.                               | 4 Grades (home temp-55°C)             |  |  |
|                | Water Temp.          | Adjustable Range: 30°C-40°C         |                         |                | Drying Power                        | 200W                                  |  |  |
|                | Water Output         | Rear                                | 0.35-1.2 L/min (0.2MPa) |                | Safety Device                       | Double metal sheet switch & Temp fuse |  |  |
|                |                      | Bidet                               |                         |                | Surface Temp.                       | 4 Grades (home temp-40°C)             |  |  |
| Position       | Rear                 |                                     |                         | Heating Power  | 40W                                 |                                       |  |  |
|                | Bidet                | 50mm~120mm                          |                         | Safety Device  | Temp controller & Temp fuse         |                                       |  |  |
| Power Rate     |                      | 1400W                               |                         | Structure      | Soft close                          |                                       |  |  |
| Safety Device  |                      | Temp sensor, Temp Switch, Temp Fuse |                         | Safety Device  | Leakage protection & Seating sensor |                                       |  |  |

## SERVICE CARD

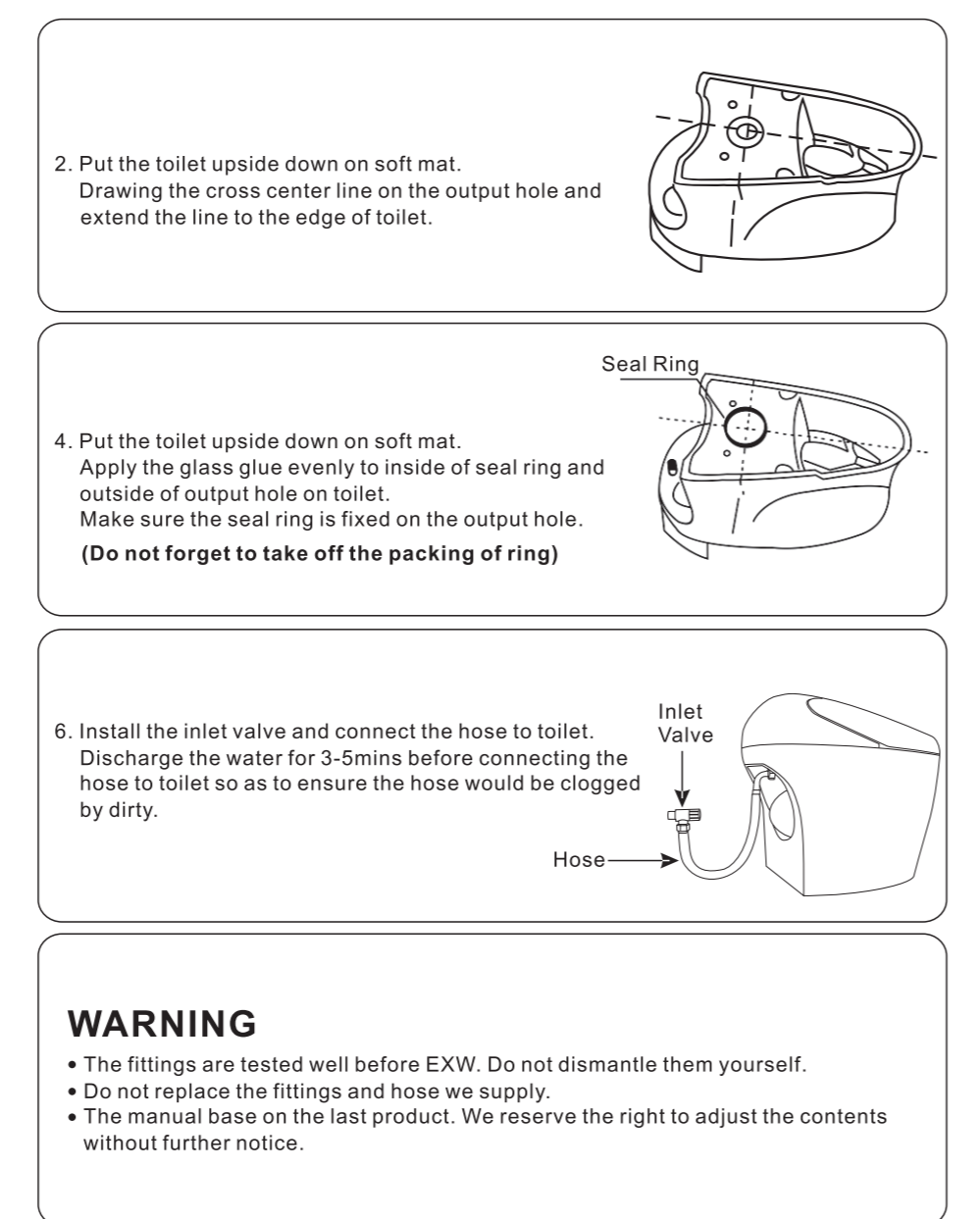
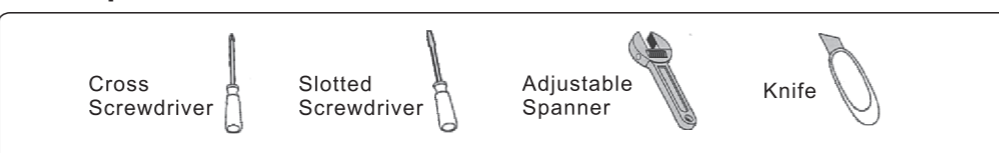
| Item No. | Date | Date   | Repair Subject | Unit in charge | Signed by Staff |
|----------|------|--------|----------------|----------------|-----------------|
| Exw No.  |      |        |                |                |                 |
| Tel.     |      | Vendor |                |                |                 |

## ADD:

### ■ Maintenance regulations

1. The obligation of maintenance base on normal using.
2. That would require charge as follow situations:
  - The failure causes by incorrect using or incorrect repairing & replacing.
  - The failure causes by moving the installed product.
  - The failure causes by fire, earthquake, flood, thunder, Public disaster & abnormal voltage.
  - The failure causes by using the incorrect plug & wire.
  - The failure causes by other uses except for home use.
  - Can not show this service card.
  - Please keep the card in a safe place.

## ■ Required tools



## WARNING

- The fittings are tested well before EXW. Do not dismantle them yourself.
- Do not replace the fittings and hose we supply.
- The manual base on the last product. We reserve the right to adjust the contents without further notice.

## ATTN:

The product is with super siphonic jet flushing system. There would be splash and big noise if the water pressure is over 3KGS. Decrease water pressure by adjusting the valve to make flushing in a right way.

## CAUTION

- Please close the valve during power cut.
- Ensure install the product with the pipe and fittings which is combined in the packing or else the toilet would be leaking.

## ■ Problem & Solution

### ■ Problem clearing

| PROBLEM  | CHECKING                         | SOLUTION                          |
|--|----------------------------------|-----------------------------------|
| Can not root                                   | Power cut or no plug in power    | Ensure plug in power              |
| No water in flushing or not in smooth flushing | Water cut or inlet valve closed  | Pull out the plug & plug in again |
|  | The inlet filter is clogged      | Check the valve and open it       |
|  | The nozzle is clogged by scale   | Clean the filter                  |
| Leaking  | Inlet valve is fully tightened   | Clean the nozzle by toothbrush    |
| Cool water & cool cover                        | The temp. adjusted to home temp. | Tighten inlet valve and hose      |
|  |                                  | Adjust the temp. again            |

## ■ Inlet filter cleaning

1. Close the valve and take off the filter by slotted screwdriver.
2. Take out the filter and clean it out before installing back to the valve.
3. Tighten the filter and open the valve.

