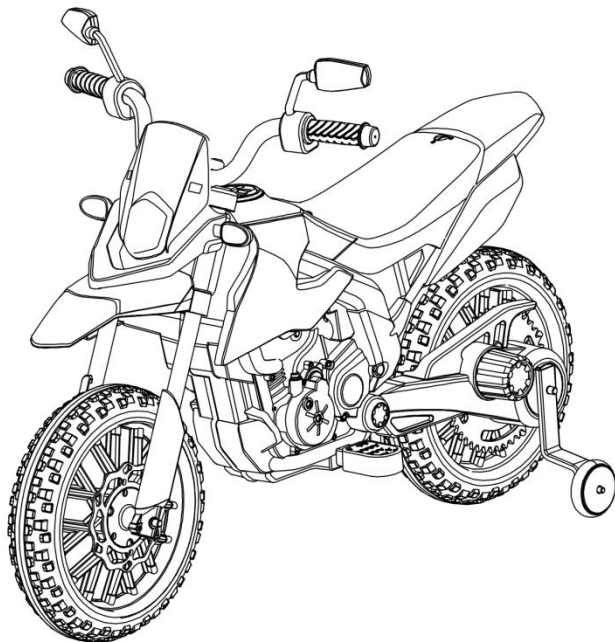


# PLEASE READ THE INSTRUCTIONS



**Styles and colors may vary**

- ◎ Suitable age for 3-8 Years
- ◎ Maximum user weight: 30kg
- ◎ Adult assembly required

## INSTRUCTION MANUAL

Charge for 4-6 hrs before initial use.

After initial charge, follow the normal recommended charging time.

Tips: due to different configurations, the number of screw, gaskets is also different. Please install them according to the contents of the manual, and the rest are for standby.

## **SAFETY**

Please retain these instructions for future reference.

**NOTE:**For best performance,only use this vehicle on flat and hard surfaces.

**AGE RANGE:**3 to 8 years old

**WEIGHT CAPACITY:**30KG is the maximum weight for 1 rider

The following safety hazards may result in serious injury or death:

- This product contains small parts.Keep children away during assembly.Make sure to remove all packaging material and parts from underneath the vehicle body.
- Never open the battery.Batteries contain lead and lead compounds(acids).
- Limbs,hair,and clothing can get caught in moving parts.Always wear shoes,keep limbs away from moving parts,and do not wear loose clothing while operating this vchile.
- This vehicle does not have brakes or braking capability.Do not leave a child unattended during operation.DO not use this in a location that may require braking capability.as this could result in loss of control,which may cause serious injury or death.
- Use of this vehicle near streets,motor vehicles,steps,bodies of water,sloped surfaces,hills,wet areas,flammable vapors,in alleys,at night,or in the dark could result in an unexpected accident.
- Usu of this vehicle in unsafe conditions such as snow,rain,loose dirt,mud.sand,or gravel may result in an unexpected accident such as tipping over,and could damage the electrical system or battery.
- Do not operate this vehicle in an unsafe manner.Examples include but are not limited to:
  - pulling the vehicle with another vehicle or similar device
  - Pushing the user
  - Traveling at an unsafe speed

## BATTERY WARNINGS

The following safety hazards may result in serious injury or death:

- Use of a battery or charger other than the supplied rechargeable battery and charger may cause a fire or explosion. Only use the supplied battery and charger.
- Use of the rechargeable battery and charger for any other product may result in overheating, fire, or explosion. Never use the supplied rechargeable battery and charger with another product.
- Explosive gases are created during charging. Charge the battery in a well-ventilated area. Do not charge the battery near heat or flammable materials.
- Contact between the positive and negative terminals may result in fire or explosion. Avoid direct contact between the terminals. Picking up the battery by the wires or charger can cause damage to the battery and may result in a fire. Always pick up the battery by its case or handles.
- Liquids on the battery may cause fire or electric shock. Always keep all liquids away from the battery and keep the battery dry. Contact or exposure to battery leakage (lead acid) may cause serious injury. If contact or exposure occurs immediately call your physician. If the chemical is on the skin or in the eyes, flush with cool water for 15 minutes. If the chemical was swallowed, immediately give the person water or milk. Do not give water or milk if the patient is vomiting or has a decreased level of alertness. Do not induce vomiting.
- Battery posts, terminals, and related accessories contain lead and lead compounds (acid)
- Tampering or modifying the electric circuit system may cause a shock, fire or explosion and permanently damage the system. Exposed wiring and circuitry in the charger may cause electric shock. Always keep the charger housing closed.

## USER WARNINGS

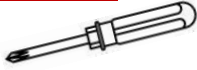
The following safety hazards may result in serious injury or death:

- Never leave a child unattended.
- Always sit in the seat when using this vehicle.
- Keep your hands, hair, and clothes away from moving parts.
- Always wear shoes when operating this vehicle.
- Children under 3 years of age cannot use the vehicle.
- Only drive on level ground.
- Do not go near swimming pools or other bodies of water, drop-offs, or up and down steep inclines.
- Do not drive the vehicle into loose dirt, mud, sand, fine gravel, or on wet surfaces.
- Do not drive the vehicle on streets or near cars.

## SPECIFICATIONS

Item	Specification
Batteries	12V
Motor	12V
Age	3-8years
Max Weight	30KG
Dimension	106.5*56*80cm
Speed	5.5~6km/hr
Play Time	1-2 hours / recharger time 8-12hours
Charger	Output DC 12V

## TOOLS REQUIRED



SCREWDRIVER  
(BRING YOUR OWN)



M8 WRENCH  
(PROVIDED)



2 PERSON  
ASSEMBLY



APPROXIMATELY  
45 MIN.  
ASSEMBLY

## HARDWARE

1

M4\*10mm  
ROUND HEAD SCREW



10 PCS

2

$\phi$  10 GASKETS



7 PCS

3

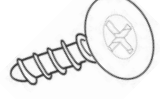
M8 NUTS



7 PCS

4

M4\*10mm  
FLAT HEAD SCREW



4 PCS

5

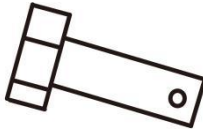
M8\*55mm  
SCREW



2 PCS

6

SCREW



2 PCS

7

M8\*155mm  
SCREW



1 PCS

8

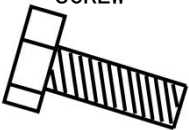
COTTER PIN



2 PCS

9

M8\*30mm  
SCREW



4 PCS

## PARTS

A

WHEEL



1 PCS

B

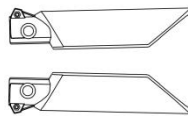
MIRROR



1 PCS

C

WHEEL TRIM (L/R)



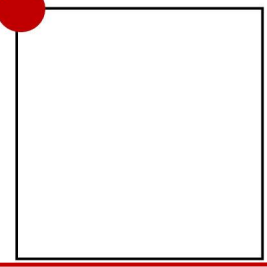
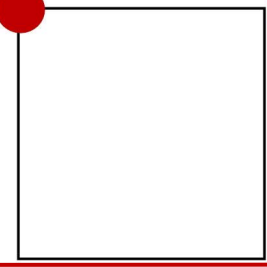
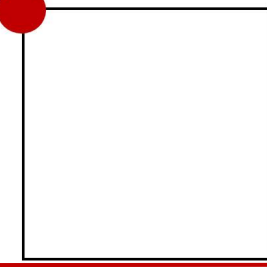
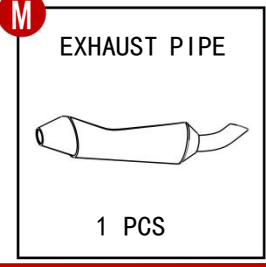
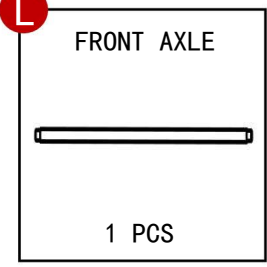
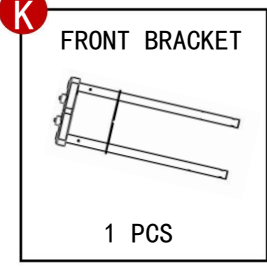
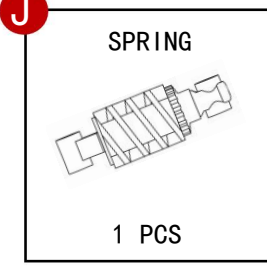
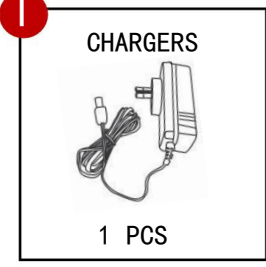
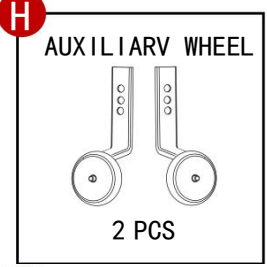
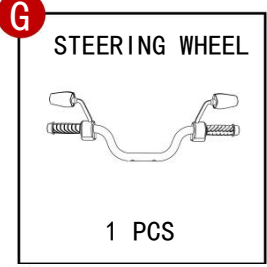
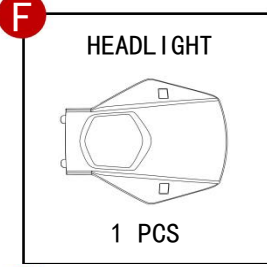
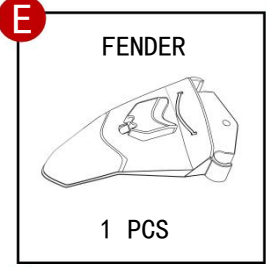
2 PCS

D

STEERING WHEEL  
PRESSURE BLOCK

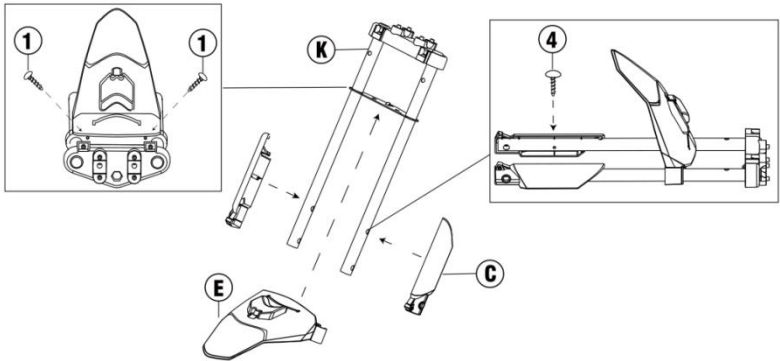


2 PCS



**PRODUCT ASSEMBLY**

- E** Fix the fender.
  - Clip the fender into the front bracket and fix it with M4 \* 10mm round head screw.
- C** Fix the wheel trim(L/R).
  - Clip the wheel trim into the front bracket and fix it with M4 \* 10mm flat head screw.(Note: install as shown in the figure. The wheel trim is divided into left and right sides)



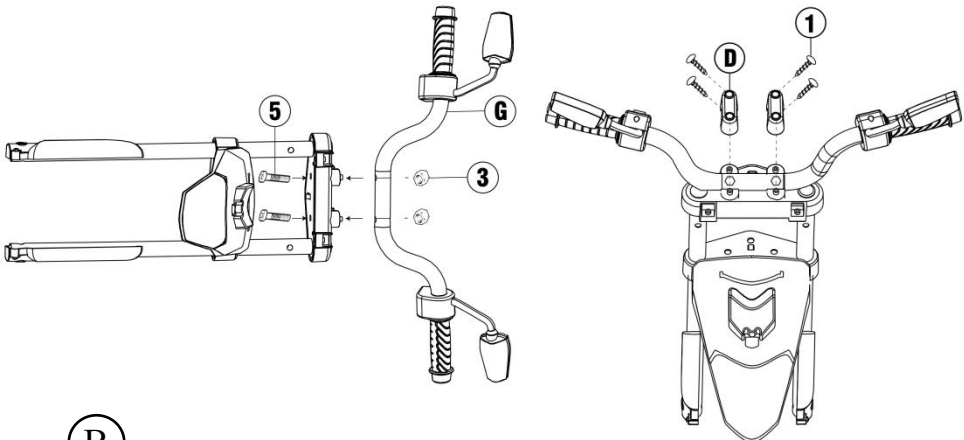
## PRODUCT ASSEMBLY

**G** Fix the steering wheel.

- Clip the steering wheel into the front bracket and fix it with M8 \* 55mm screws and M8 nuts with M8 wrench.

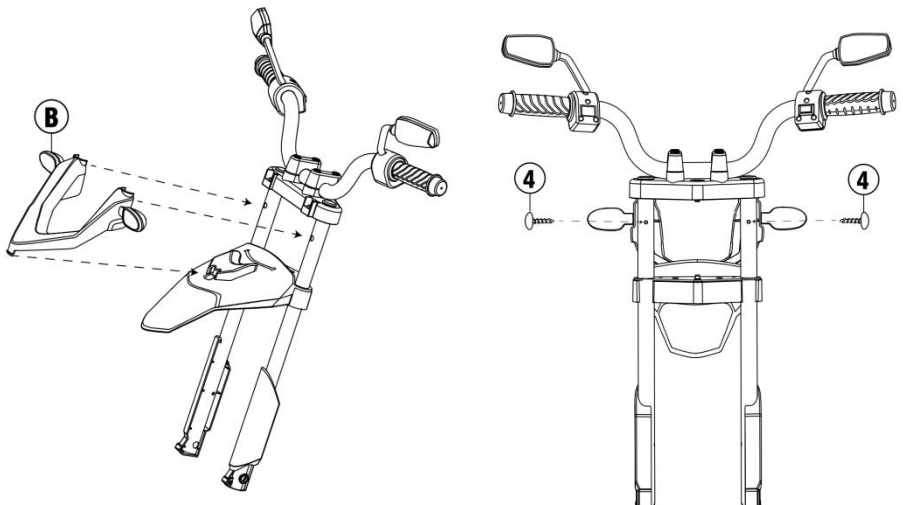
**D** Fix the steering wheel pressure block.

- Clip the steering wheel pressure block into the front bracket and fix it with M4 \* 10mm round head screw.



**B** Fix the mirror.

- Clip the clip of the mirror into the fender slot, clip the screw column of the mirror into the hole of the front bracket, and fix it with M4 \* 10mm flat head screws.

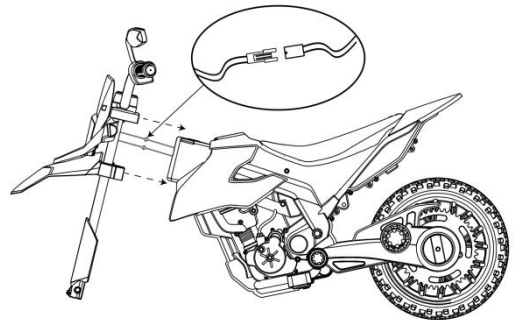
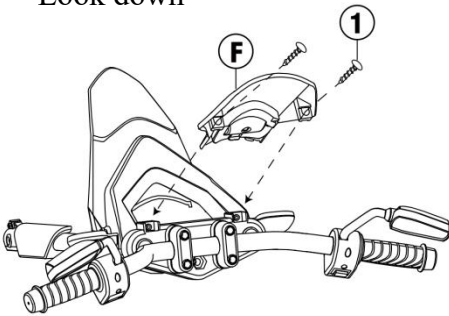


## PRODUCT ASSEMBLY

### F Fix the headlight.

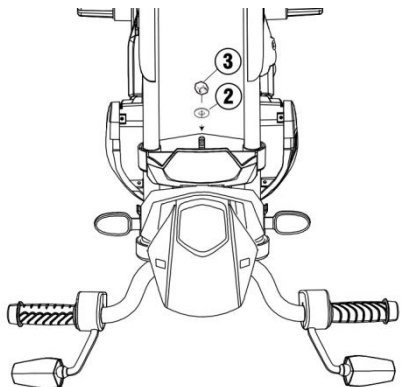
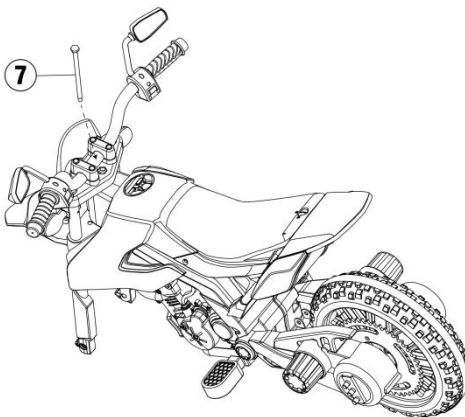
- Clip the headlight into the fender and the front bracket and fix it with M4 \* 10mm Round head screw.
- Connect the line of the headlight and the line of the steering wheel with the line on the vehicle body.(as shown in the figure)

Look down



### 7 Fix the m8\*155mm screw.

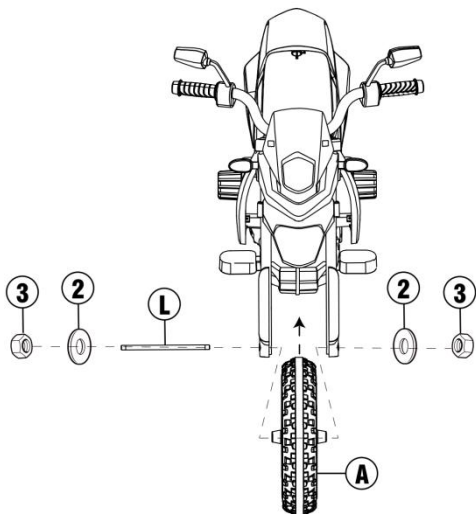
- Use M8 \* 155mm screw to connect them in series.
- Turn over the vehicle body (be careful of scratches).
- Put  $\varnothing$  10 gaskets, M8 nuts, fixed with M8 wrench.





## PRODUCT ASSEMBLY

(A) (L)



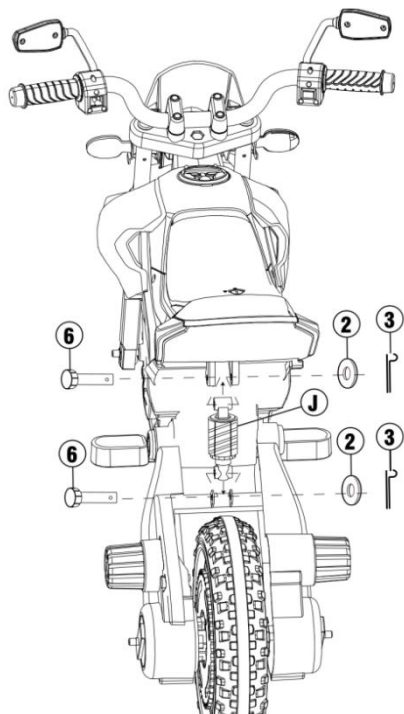
Fix the wheel/front axle.

- Clip the wheel into the front bracket, align the wheel hole with the front bracket hole, and penetrate the front axle.
- Put  $\phi$  10 gaskets, M8 nuts, fixed with M8 wrench.

(J)

Fix the spring.

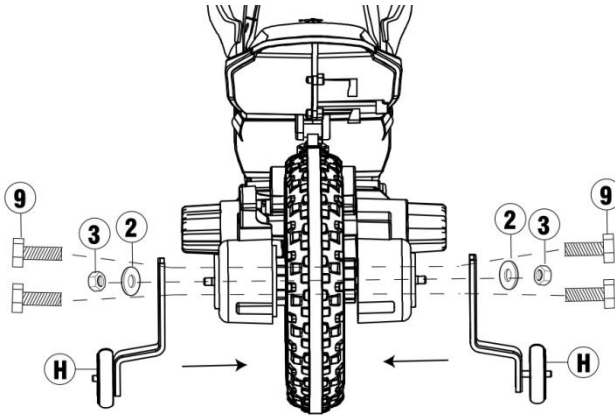
- Clip the spring into the body slot and thread it into the screw.
- Put  $\phi$  10 gaskets, Insert cotter pin fixed.



## PRODUCT ASSEMBLY

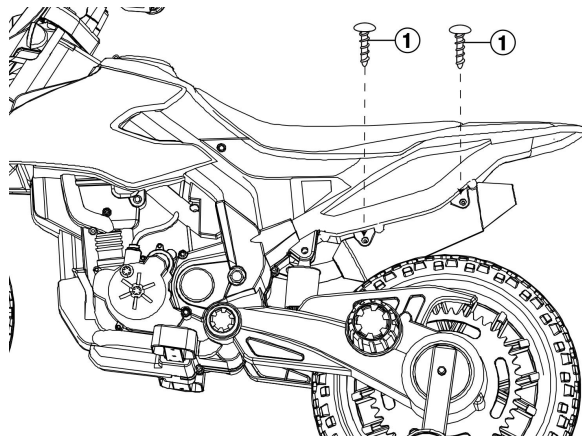
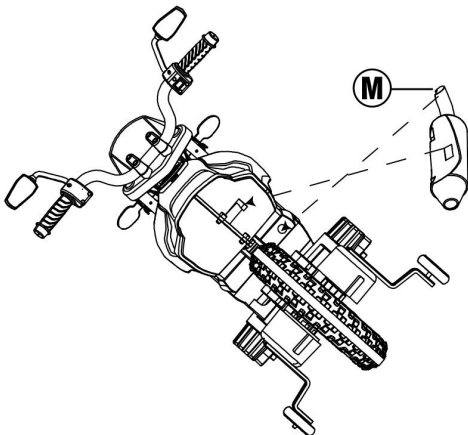
### H Fix the auxiliary wheel.

- Place the auxiliary wheel,  $\phi$  10 gaskets, and M8 nuts on the rear axle in turn, Fix The M8 nuts with the M8 wrench.
- Fix M8 \* 30mm screws with M8 wrench as shown in the figure.

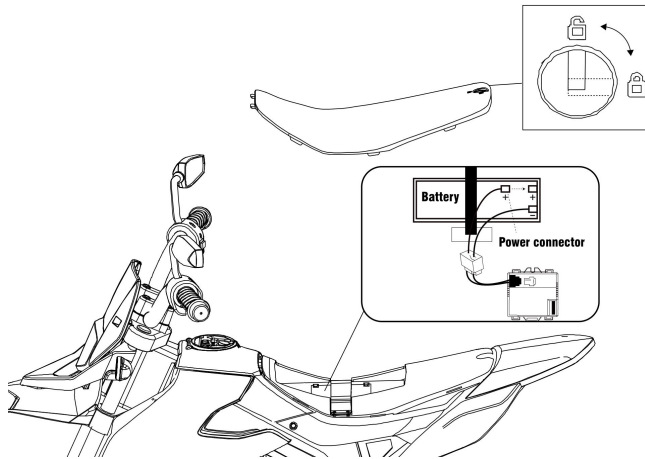


### H Fix the exhaust pipe.

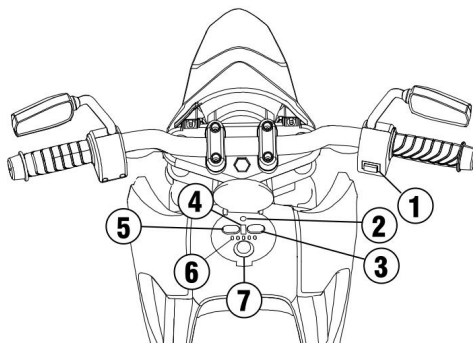
- Clip the exhaust pipe into the body orifice.
- Fix it with M4 \* 10mm Round head screw.



## DASHBOARD DIAGRAM



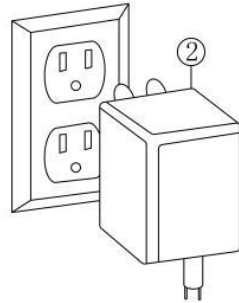
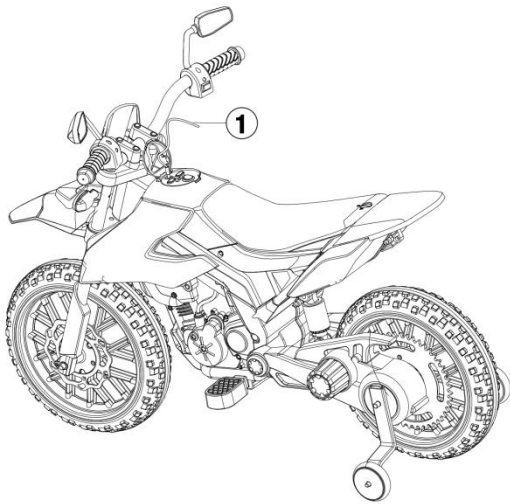
Rotate the seat cushion latch, open the seat cushion, find the power cable, connect the power supply, and then install the seat cushion again. Rotate the seat cushion latch and secure it.



Open the fuel tank cap:

1. Forward button: press forward and release to stop slowly;
2. Socket: charge;
3. Next song: press it to switch to the next song;
4. USB:
5. Mode switching: Wireless Technology mode: After connected your mobile phone and the wireless device, the car can play music from your mobile phone / Music mode: press it to play music;
6. Power display: clearly see the battery power and help judge whether the battery needs to be charged;
7. Power button: can turn the vehicle on or off;

## CHARGING INSTRUCTIONS



1. Insert the charger jack into the charging hole of the car.
2. Plug the charger plug into the stable matching AC power supply as shown in the picture.

- Charge the battery 15 to 18 hours before initial use.
- On average, you will need to charge the battery between 8 and 12 hours. Do not charge the battery for more than 20 hours. Failure to charge the battery as directed could cause permanent damage to the battery and void the warranty.
- Damage to the battery may occur if it is allowed to drain completely. Do not allow the battery to drain completely.
- Check the battery and charger (supply cord, connector) for wear and damage before charging. DO not charge the battery if damage has occurred.
- Only an adult who has read and understood the safety warnings should handle, charge and recharge the battery.

## CARING FOR YOUR RIDE-ON

- Park the vehicle indoors or cover it with a tarp to protect it from wet weather.
- Do not leave the vehicle in the sun for long periods of time or fading may occur. Store in shade or cover with tarp.
- Do not wash the vehicle with a hose.
- Do not wash the vehicle with soap.
- Charge battery at least once a month to prolong the life of the battery.

## TROUBLESHOOTING

PROBLEM	REASON	SOLUTION
Vehicle does not move	Low battery	Fully charge the battery
	Electrical protection	Stop use for several minutes and restart
	Switch not in the correct position	Completely press in switches
	Battery connectors disconnected	Plug in battery connectors
Battery does not recharge	Battery connectors disconnected	Plug in battery connectors
	Charge not connected to socket or outlet	Completely plug in the charger
Battery does not last	Battery does not have a full charge	Fully charge the battery
Battery is warm and makes a slight noise while charging	Normal	Normal
Slow speed	Low battery	Fully charge the battery
	Overloaded vehicle	Reduce the weight on the vehicle
	Uneven or sloped road	Drive on flat pavement
Vehicles shakes while driving	Loose connection to motor	Ensure the motor is properly connected to the battery
Forward and reverse switch is flipped	Gear boxes are installed incorrectly	Make sure the L gear box is on the left and R gear box is on the right

## WARNINGS REGARDING BATTERIES

The battery on the vehicle is not replaceable.

- DO not mix old and new batteries.  
DO not mix alkaline,standard(carbon-zinc),or rechargeable batteries.
- Non-rechargeable batteries should not be charged.
- Rechargeable batteries should be charged under adult supervision only.
- Exhausted batteries should be removed.
- The supply terminals should not be short-circuited.
- Do not put batteries next to or in a heat source(fire,electronic heating device,etc.)
- Do not hit batteries against hard objects.
- Do not submerge batteries in water.
- Batteries should be inserted with the correct polarity.
- Only use the battery specified by the manufacturer.
- Only use the charger specified by the manufacturer.




### WARNING:


- Protective equipment should be worn.Not to be used in traffic.
- The toy should be used with caution since skill is required to avoid falls or collisions causing injury to the user or third parties.
- To reduce the risk of injury,adult supervision is required.Never use in roadways.near motor vehicles,on or near steep inclines or steps,swimming pools or other bodies of water;always wear shoes,and never allow more than 1 rider.

### IMPORTANT

- Always charge battery for a FULL 18hrs the first time you use it.
- Always charge battery for a FULL 10hrs after each use.
- Charge the battery once a month. even if you are not using your vehicle.

 **WARNING:** ADULT ASSEMBLY REQUIRED

 **WARNING:** Not to be used in traffic

 **WARNING:** CHOLING HAZARD-Small parts.  
Not for children under 3yrs.

