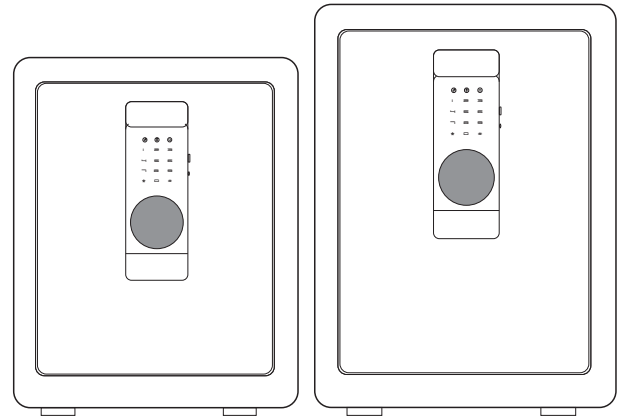


Instruction Manual

Suitable for KU-55/KU-68



Warnings	1
Box Contents	2
Set Up the Code	3-4
Open / Close the Door.....	5
Additional Features	6-7
Bolting Down Your Safe	8
Troubleshooting	9
Warranty.....	10

WARNINGS

1. Do not lock the emergency key or emergency battery box into your safe.
2. If the safe box is not used for a long time, the battery should be removed to prevent leakage of liquid from damaging the electronic system.
3. Purchase 4 AA batteries in advance, this safe doesn't contain batteries.

WARRANTY

We are committed to building high quality products and will make every effort to ensure our products are free from any defects. We guarantee your safe will be free of defects in materials or workmanship for a period of one year from the date of original.

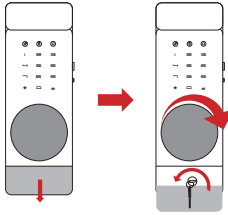
This warranty does not cover abuse, misuse, use in any manner for which is not designed, neglect, modification, damage in advertently caused by the owner, accidents or tampering.

If your safe is determined to be defective and we are responsible for the cause we will have it repaired at our expense, or we will send a new replacement at no cost to you. You will be required to return your existing unit as well as all included accessories to us to replace the defective unit.

If it is determined your safe needs to be returned, our customer support team will provide you with a return detail.

SET UP THE CODE

Step 1: Open the door with the key



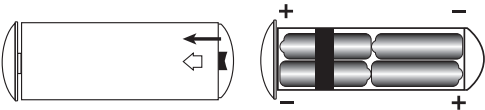
1. Down slide the keyhole cover to expose the emergency keyhole.
2. Insert the emergency key, turn it counterclockwise to the limit, and hold on it.
3. Then rotate the knob clockwise to open the door.

- ▲ NOTICE: 1. When you rotate the knob to open, you must have the key fully inserted and turned counterclockwise to the limit, keeping the key until the safe unlocked and opened.
2. Use the key to unlock, the led light will not light up.
 3. Please keep the keys in a secure place, do not lock the keys inside the safe.

Step 2: Install Battery

1. After first opening, keep the safe open and locate the battery case, prepare 4 brand-new AA 1.5 Volt alkaline batteries (not included).
2. Remove the internal battery case cover and install the 4 AA batteries by matching the + & - electrode.

- ▲ NOTICE: 1. Rechargeable battery is not recommended as it may destroy the internal electronic components of your safe.
2. Please use brand-new batteries, do not mix used batteries with new batteries.
 3. After putting in the batteries, the safe beeps once, it means the safe is energized and you can proceed to the next step.
 4. After opening the door, if the safe **beeps** 6 times in a row, it means the batteries are out of power, please replace the batteries.

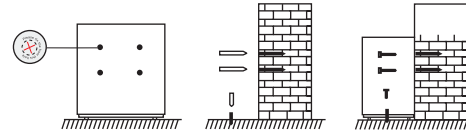


BOLTING DOWN YOUR SAFE

TOOLS NEEDED TO BOLT THE SAFE

1. Drill (not included)
2. Marker pen (not included)
3. Expansion screws (included)

MOUNT THE SAFE



Step1:

Place the safe at the installation place (wall or floor), mark the drilling spots on the wall/floor from the inside pre-drilled holes.

Step2:

Remove the safe and drill a about 10mm hole in the wall or floor with drill bit.

Step3:

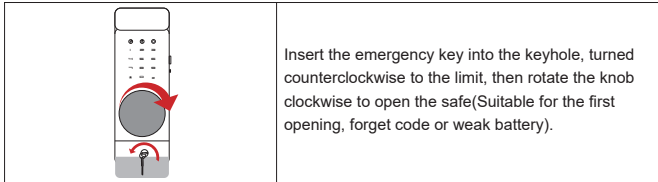
Position safe in place and install screws through safe in to the holes. Tighten screws.

▲ NOTICE: This safe has 6 pre-drilled holes, 4 pre-drilled holes in the back and 2 pre-drilled holes in the bottom, you can mount the safe on the wall or floor according to your needs.

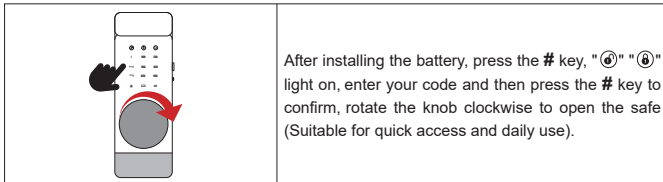
OPEN / CLOSE THE DOOR

THREE WAYS TO OPEN THE DOOR

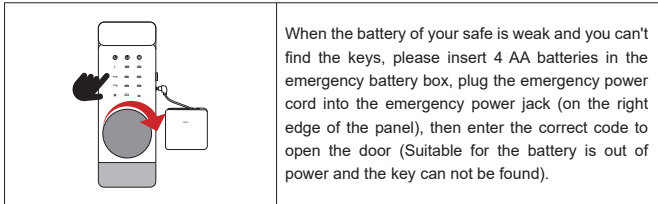
1. The first way to open: Use the emergency key.



2. The second way to open: Use the code.



3. The third way to open: Use the emergency battery box + code.



CLOSE THE DOOR

Close the door and rotate the knob counterclockwise.

ADDITIONAL FEATURES

DUAL ALARM SYSTEM

1. After 3 consecutive times of wrong code, your safe will activate the alarm system, the alarm will sound for one minute, enter the correct code and the alarm will be cancelled.
2. In standby state, press * then press 9, prompt sound comes up, the vibration alarm mode is turned on. If the box is shaken or hit violently, it will give an alarm immediately for one minute, at this point, enter the correct code to stop the alarm.

▲ NOTICE:

1. When power on, the system default for alarm is off.
2. After safe is opened with code, the vibration alarm will be turned off and needs to be turned on again.
3. The alarm can be stopped by using the key to open the safe or remove the battery to cut off the power.

RESET THE SYSTEM

1. Press and hold the setting button for about 3 seconds, prompt sound comes up, "Ⓜ" light on, indicating the reset successful (All stored codes will be deleted, please use the default code to unlock).
2. The default code is 123456, need to be modified.

MUTE FUNCTION

1. In standby state, press * then press 1, "Ⓜ" "Ⓜ" light on, prompt sound comes up, indicate the mute function is turned **on**.
2. In standby state, press * then press 1, "Ⓜ" "Ⓜ" light on, prompt sound comes up, indicate the mute function is turned **off**.

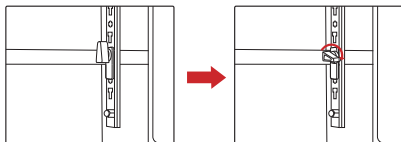
▲ NOTICE:

Under the mute function, the wrong code alarm and vibration alarm still work, and the alarm will sound when triggered.

ADDITIONAL FEATURES

HOW TO USE THE ADJUSTABLE SHELF

Turn the shelf holder clockwise and pull out the holder horizontally, you can adjust the position of the shelf or take out the shelf according to your needs.



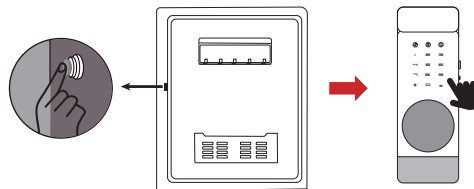
UNDER VOLTAGE WARNING

When the voltage is around 4.8V, after opening the door, the buzzer will **beeps** 6 times in a row, reminding that the battery power is low and needs to replace the battery.

SET UP THE CODE

Step3: Set up the code

1. Open the safe, keep the safe opening, short press the setting button (on the inner side of the door), the safe **beeps** once and "⊕" light on.
2. Input a new code(1-8 digits), then press #, "⊕" flash, repeat the code, then press # to confirm.
3. The safe **beeps** 3 times in a row indicate the two codes entered are different, please repeat the previous step.
4. Prompt sound comes up, panel lights off indicate the setting is successful.
5. Testing the code before you close the door.



Step4: Set up the second code

1. Open the safe, keep the safe opening, press # and enter 0 twice, then short press the setting button (on the inner side of the door), the safe **beeps** once and "⊕" light on. (The buzzer will make **beeps** 2 times when any one of the buttons is pressed during the second password setting process).
2. Input a new code(1-8 digits), then press #, "⊕" flash, repeat the code, then press # to confirm.
3. The safe **beeps** 3 times in a row indicate the two codes entered are different, please repeat the previous step.
4. Prompt sound comes up, panel lights off indicate the setting is successful.
5. Testing the code before you close the door.

▲ NOTICE:

1. 10 seconds without any operation after pressing the setting button, it will go back to standby mode, you need to retry from **STEP3**.
2. Please set up both of two codes immediately after receiving the safe.
3. The default code is **123456**, need to be modified.

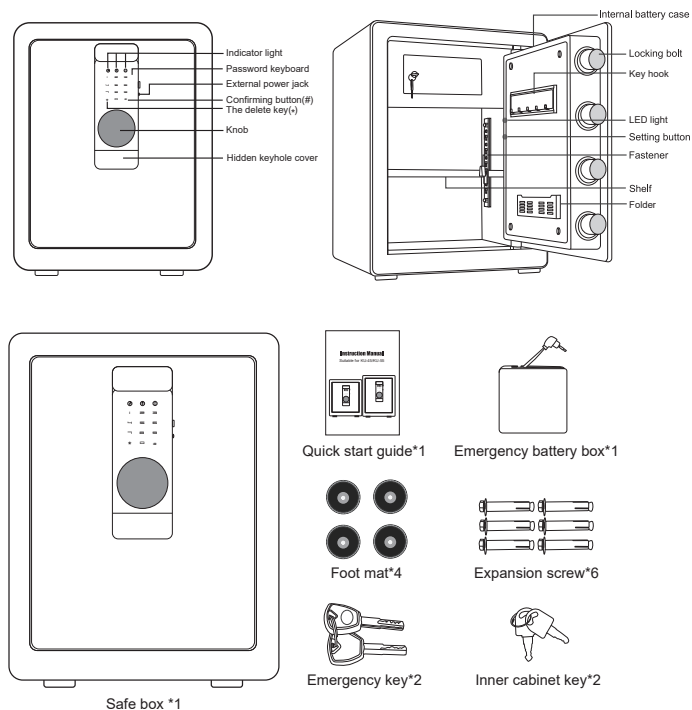
TROUBLESHOOTING

Malfunction	Cause	Solution
Inserting the battery does not work	Battery drained	Replacement battery
	Electrode reversed	Put the battery in the correct position
Can't open with password	Low battery	Replace with new battery
	Wrong password	Please reset your password
Door won't close	There is an obstacle in the middle of the latch or behind the door	Close the door after clearing the obstacle
Unlocked but the door won't open	The key is not turned to the specified position	After turning the key to the specified position, turn the knob to open
	The knob is not turned within 5 seconds of entering the password	After turning the key to the specified position, turn the knob to open
Cannot be locked	Key not pulled out	Lock the door after removing the key
LED won't light up	Use the key to open the safe	Use the electronic code to open the safe
<p>If you cannot handle the above problems properly, please feel free to contact our after-sales team, we will do our best to help you solve all your problems. We provide 7x24 hours after-sales service, please feel free to contact us.</p>		

Maintainance

- 1.If you do not use the safe for a long time, please take out the battery in the safe to prevent the battery fluid from leaking and damaging the safe.
- 2.Keep your keys and emergency battery box safe, it can open the the safe when the safe is out of power or if you forget your code.
- 3.Store the safe in a cool, backlit place.
- 4.Do not wipe the safe with corrosive chemical solvents, use a clean rag to wipe with a little cleaning agent.

BOX CONTENTS



▲ NOTICE:

1. The keys are in the accessories bag on the door.
2. The picture is for KU-55, there are only slight differences between different models.