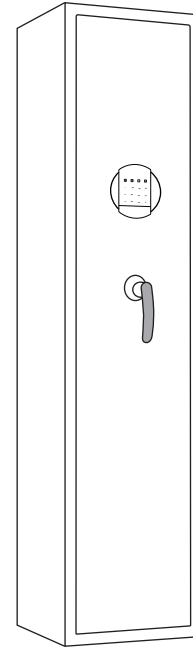


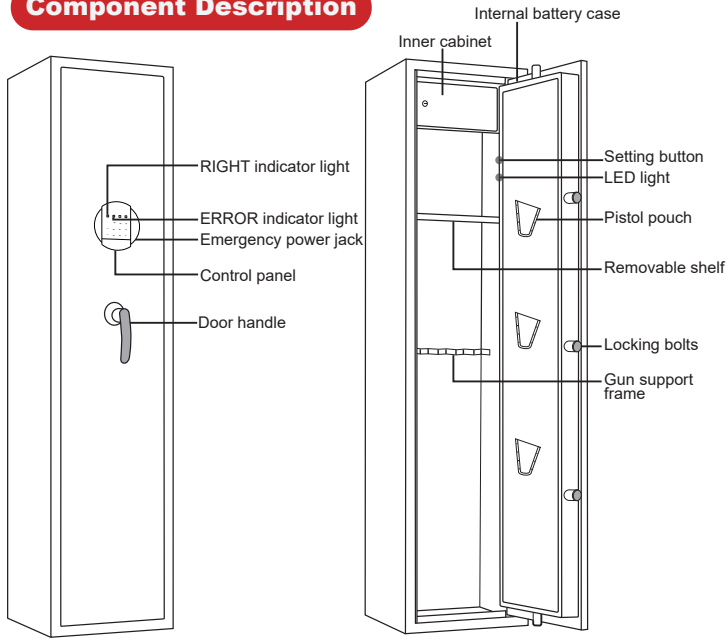
Instruction Manual

SKU:G2-145D



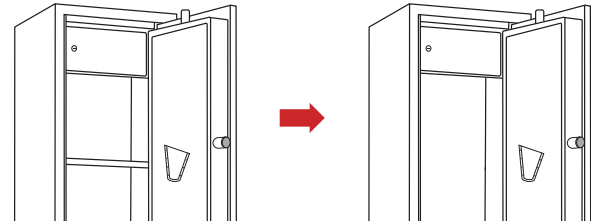
Never keep emergency keys and emergency battery box in your gun cabinet!!!

Component Description



Removable Shelf

This gun cabinet has a removable shelf, with the shelf, you could place short rifles and store your pistols and ammo on the shelf; without shelf, you could place your long rifles, more flexible storage space.



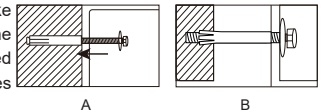
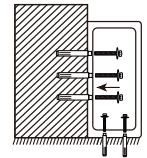
Under-voltage Warning

When the battery voltage is lower than 4.8V(±0.2V) after opening the door, the "LOW BATTERY REMINDER" indicator light will on, and there will be a constant beep sound reminding that the battery is low and needs to be replaced.

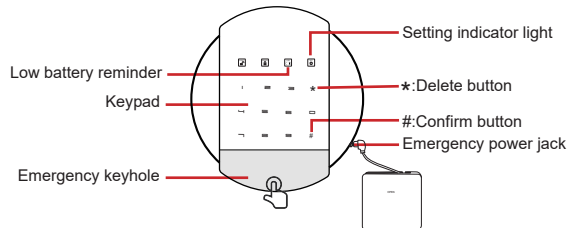
Mounting Instructions

⚠ NOTE: Please make sure to mount the gun cabinet on the wall or floor otherwise it may fall over and threaten your safety.

- Place the gun cabinet in the desired location. Lift the bottom carpeting up to find the install holes locations on the floor or wall.
- Mark the drilling spots on the wall or floor from the inside pre-drilled holes, then remove gun cabinet and drill the holes. Drill the appropriate diameter and depth of pilot holes depending on the type of hardware.
- Put the expansion bolts into the drilled holes, take the expansion bolt out of the sleeves, then place the gun cabinet and align the pre-drilled holes with drilled holes, and insert the expansion bolts into its sleeves from inside of the safe.



Schematic Drawing of Control Panel



Thank you for choosing our products! Please take your time to read and familiar with the proper operating procedures presented on the following pages.

IMPORTANT

⚠ WARNING

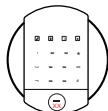


- Tip over hazard: Secure the cabinet! The cabinet can be tipped over by children or adults, please make sure the cabinet is mounted on the wall or floor.
- Keep the keys in a secure place away from children.
- Do not move this cabinet using its handle.

Lifetime Key Matching Service

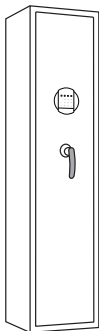
Record the serial number on the locks! (They are important information for the manufacturer to make up keys if you lose your keys.)

Serial # (panel lock) : _____

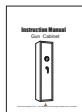


Panel lock

Parts List



Gun Cabinet *1



Instruction Manual*1



Emergency Battery Box*1



Expansion Screws*5



Emergency Key*2



Inner Cabinet Key*2

Warnings

- ⚠ 1. Do not lock the emergency key or emergency battery box into the cabinet.
- ⚠ 2. The initial user code is "123456", which need to be modified.
- ⚠ 3. If the cabinet is not used for a long time, the battery should be removed to prevent leakage of liquid from damaging the electronic system.
- ⚠ 4. Purchase 4 AA batteries in advance, this cabinet does not contain batteries.

Dual Alarm System

1. After 3 consecutive times of wrong code, your safe will activate the alarm system, the alarm will sound for one minute, enter the correct code and the alarm will be canceled.
2. In standby state, press * then press 9, prompt sound comes up, the vibration alarm mode is turned on. If the box is shaken or violent hit, it will give an alarm immediately for one minute, at this point, enter the correct password to stop the alarm.

⚠ NOTE:

1. When power on, the system default for alarm is off.
2. After the cabinet is opened with code, the Vibration alarm will be turned off and needs to be turned on again.
3. The alarm beeps can be stopped by use the key to open the safe and remove the battery to cut off the power.
4. Vibration alarm mode is one-off, If necessary, please reset each time after opening.

Mute Function

1. In standby state, press "*" then press "1", the "SETTING" and "RIGHT" indicator light on, prompt sound comes up, indicate the mute function is turned on.
2. In silent mode, press "*" then press "1", the "SETTING" and "RIGHT" indicator light on, prompt sound comes up, indicate the mute function is turned off.

⚠ NOTE:

Under the mute function, the wrong code alarm and vibration alarm still work, and the alarm will sound when triggered.

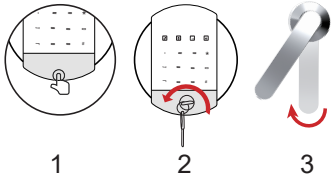
Reset the System

1. Press and hold the setting button for about 3 seconds, prompt sound comes up, "RIGHT" indicator light on, indicating the reset successful. (All stored codes will be deleted, please use the initial code to unlock).
2. The initial code is 123456, need to be modified.

System Setting

Step1 Opening Your Cabinet For The First Time

NOTE: Please use the emergency key to open the cabinet for the first time.



Open the keyhole cover to expose the emergency keyhole. Insert the emergency key into the keyhole, turn it counterclockwise to the limit. Turn the door handle clockwise to open the door for the first time.

NOTE: There is a detachable, hidden keyhole cover on the bottom of the panel, please press the middle of the bottom panel with your finger to open it.

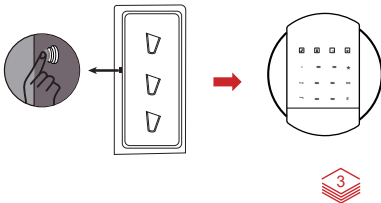
Step2 Insert The Battery

Remove the internal battery case cover. Install 4 AA batteries(not included) and restore battery case cover.

- NOTE:**
1. Under normal condition, if the batteries are low, the "LOW BATTERY REMINDER" indicator light on the keypad control will light up, indicate that you should install new batteries.
 2. If batteries are too low to open the door, please use the emergency battery box comes with cabinet.
 3. Rechargeable battery is not recommended, as it may destroy the internal electronic components of the cabinet.

Step3 Set The User Code

- NOTE:**
1. The user can set two independent codes for the gun cabinet.
 2. The initial user code is "123456", need to be modified. (After you set two new different user code successfully, the initial user code will be covered automatically.)
 3. The code consists of a minimum 1 number and maximum 8 numbers.
 4. The "*" button is delete button. After pressing the "*" key, the entered code will be cleared.



To set the new user code, the door must be opened first, then press the setting button on the inner side of the door for 1 second. Buzzer "beep" will sound for once, then the "SETTING" indicator light will on.

1. Input new code(1-8 digits), and press the "#" button to confirm.
2. Repeat the code, then press "#" button to confirm.
3. Beep three times indicate the two codes entered are different, please repeat the previous step.
4. Prompt sound comes up, panel lights off indicate the setting is successful.
5. Testing the code before you close the door.

Step4 Set up the second code

1. Open the safe, keep the safe opening, press "#" and enter 0 twice, then press the setting button (on the inner side of the door) for 1 second, buzzer "beep" will sound and "SETTING" indicator light on.
2. Input new code(1-8 digits), and press the "#" button to confirm.
2. Repeat the code, then press "#" button to confirm.
3. Beep three times indicate the two codes entered are different, please repeat the previous step.
4. Prompt sound comes up, panel lights off indicate the setting is successful.
5. Testing the code before you close the door.

NOTE:

1. 10 seconds without any operation after pressing the setting button, it will go back to stand by mode, you need to retry from **STEP 3**.
2. Please set up both of two codes immediately after receiving the safe.

Three Ways to Open the Door

1. The first unlocking method: Use the emergency key

Insert the emergency key into the keyhole, turn it counterclockwise to the limit. Then turn the door handle clockwise to open the safe door.(Suitable for the first opening, forgetting the code or when the battery is dead).

2. The second unlocking method: Use the user code

After installing the battery, press the "*" button, then enter your code and press the "#" button again, the "RIGHT" light on, then turn the door handle clockwise to open the door.

3. The third unlocking method: Use the emergency battery box + user code

When the battery is too low to open the door, insert 4 AA batteries in the emergency battery box, plug the emergency power cord into the emergency power jack on the right of the panel, then enter the correct user code to open the door.