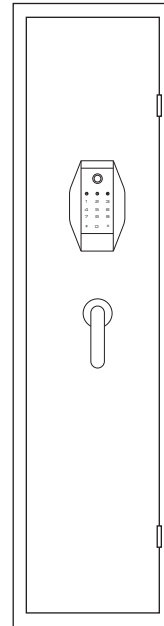
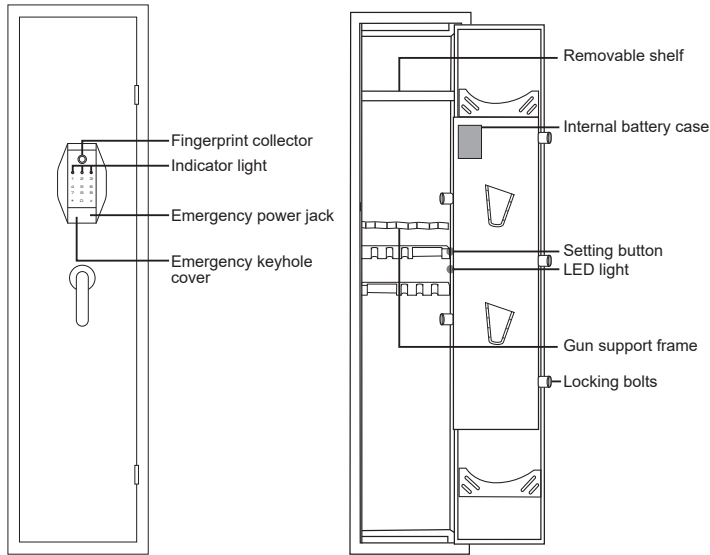


Instruction Manual

Suitable for G9-138W

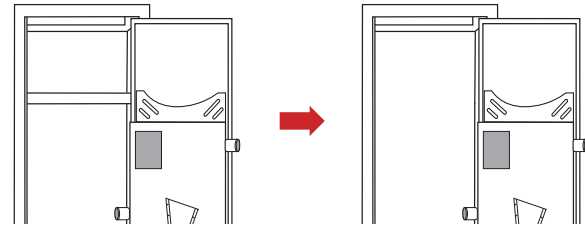


Component Description



Removable Shelf

This gun cabinet has a removable shelf, with the shelf, you can place short rifles, store your pistols and ammo on the shelf; without the shelf, you can place your long rifles, more flexible storage space.

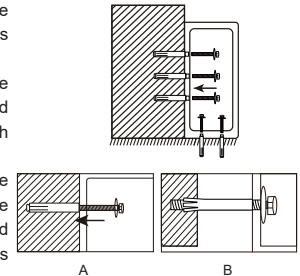


Under-voltage Warning

When the voltage is around 4.8V, after opening the door, the buzzer will beep 6 times in a row, reminding the user that the battery power is low and the user needs to replace the battery.

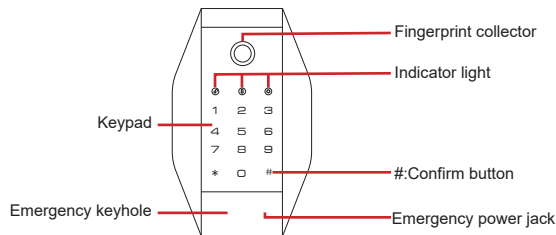
Mounting Instructions

- Place the gun cabinet in the desired location. Lift the bottom carpeting up to find the install holes locations on the floor or wall.
- Mark the drilling spots on the wall or floor from the inside pre-drilled holes, then remove gun cabinet and drill the holes. Drill the appropriate diameter and depth of pilot holes depending on the type of hardware.
- Put the expansion bolts into the drilled holes, take the expansion bolt out of the sleeves, then place the gun cabinet and align the pre-drilled holes with drilled holes, and insert the expansion bolts into its sleeves from inside of the safe.



⚠ NOTICE: Please make sure to mount the gun cabinet on the wall or floor otherwise it may fall over and threaten your safety.

Schematic Drawing of Control Panel



Thank you for choosing our products! Please take your time to read and familiar with the proper operating procedures presented on the following pages.

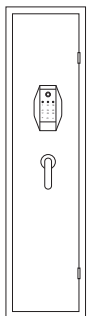
IMPORTANT

⚠ WARNING



- Tip over hazard: Secure the cabinet! The cabinet can be tipped over by children or adults, please make sure the cabinet is mounted on the wall or floor.
- Keep the keys in a secure place away from children.
- Do not move this cabinet using its knob.

Parts List



Gun Cabinet *1



Instruction Manual*1



Emergency battery box*1



Expansion Screws*5



Emergency Keys*2

Warnings

- ⚠ 1. Do not lock the emergency key or emergency battery box into the cabinet.
- ⚠ 2. The default user code is **123456**, which needs to be modified.
- ⚠ 3. If the cabinet is not used for a long time, the battery should be removed to prevent leakage of liquid from damaging the electronic system.
- ⚠ 4. Purchase 4 AA batteries in advance, this cabinet does not contain batteries.

Dual Alarm System

1. After 3 consecutive times of wrong code, your safe will activate the alarm system, the alarm will sound for 30 seconds, enter the correct code and the alarm will be cancelled.
2. In standby state, press *, there is a beep and all the lights came on at once, the vibration alarm mode is turned on. If the box is shaken or hit violently, it will give an alarm immediately for 30 seconds, at this point, enter the correct code to stop the alarm.

⚠ NOTICE:

1. When power on, the system default for alarm is off.
2. After safe is opened with code, the vibration alarm will turned off and needs to be turned on again.
3. When you forget the code, the alarm can be stopped by using the key to open the safe and remove the battery to cut off the power.

Mute Function

1. In standby state, press **1** twice, then press **#**, there is a long beep , indicate the mute function is turned on.
2. In mute function state, press **1** twice, then press **#**, there is a long beep , indicate the mute function is turned off.

⚠ NOTICE:

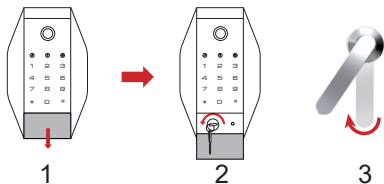
Under the mute function, the wrong code alarm and vibration alarm still work, and the alarm will sound when triggered.

Reset the System

1. Press and hold the setting button for 5 seconds, the buzzer plays a chord, indicating the reset successful (All stored codes will be deleted, please use the default code to unlock).
2. The default code is **123456**, needs to be modified.

System Setting

Step1 Open the door with the key



1. Down slide the keyhole cover to expose the emergency keyhole.
2. Insert the emergency key, turn it counterclockwise to the limit, and hold on it.
3. Then rotate the knob clockwise to open the door.

▲ **NOTICE:** 1. When you rotate the knob to open, you must have the key fully inserted and turned counterclockwise to the limit, keeping the key until the safe is unlocked and opened.

2. Use the key to unlock, the led light will not light up.

3. Please keep the keys in a secure place, do not lock the keys inside the safe.

Step2 Install Battery

1. After first opening, keep the safe open and locate the battery case, prepare 4 brand-new AA 1.5 Volt alkaline batteries (not included).
2. Remove the internal battery case cover and install the 4 AA batteries by matching the + & - electrode.

▲ **NOTICE:** 1. Rechargeable battery is not recommended as it may destroy the internal electronic components of your safe.

2. Please use brand-new batteries, do not mix used batteries with new batteries.

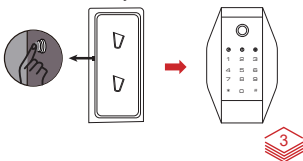
3. After opening the door, if the safe beeps 6 times in a row, it means the batteries are out of power, please replace the batteries.

Step3 Set the Administrator Code

1. Open the safe, keep it open, press # and enter 0 twice, then short press the setting button (on the inner side of the door), it will beep once and the **SETTING** indicator will light up.

2. Input new code(3-12 digits), and press the # to confirm.

3. Test the code before you close the door.



Step4 Set the second code

1. Open the safe, keep it open, press # and enter 1 twice, then short press the setting button (on the inner side of the door), it will beep once and the **SETTING** indicator will light up.

2. Input new code(3-12 digits), and press the # to confirm.

3. Test the code before you close the door.

▲ **NOTICE:** 1. 10 seconds without any operation after pressing the setting button, it will go back to standby mode, you need to retry.

2. Please set up both of two codes immediately after receiving the safe.

3. When setting the code, please short press the setting button. If you long press the setting button, the buzzer plays a chord, indicating the safe was restored to factory settings and all code will be deleted.

4. The default code is **123456**, need to be modified.

Step5 Set the Fingerprint

1. To set the new fingerprint, the door must be opened first, then short press the setting button on the inner side of the door.

2. Place one of your fingers on the fingerprint collector. When you hear the short "beep", remove your finger and press again, repeat four times.

3. Buzzer "beep" will sound and the "unlocking" indicator will light up, indicating the setting is successful.

▲ **NOTICE:** 10 seconds without any operation after pressing the setting button, it will go back to stand by mode, you need to retry.

Four Ways to Open the Door

1. The first method: Use the emergency key

Insert the emergency key into the keyhole, turn it counterclockwise to the limit. Then turn the door handle clockwise to open the safe door. (Suitable for the first opening, forgetting the code or fingerprint, or when the battery is dead).

2. The second method: Use the code

After installing the battery, press the "#" button, then enter your code and press the "#" button again, the "unlocking" indicator light will light up, then turn the door handle clockwise to open the door.

3. The third method: Use the fingerprint

Put your finger on the fingerprint collector, the "unlocking" indicator light will light up. Turn the door handle clockwise to open the door.

4. The fourth method: Use the emergency battery box + code/fingerprint

When the battery is too low to open the door, insert 4 AA batteries in the emergency battery box, plug the emergency power cord into the emergency power jack beside the key hole, then use your code/fingerprint to open the door.

