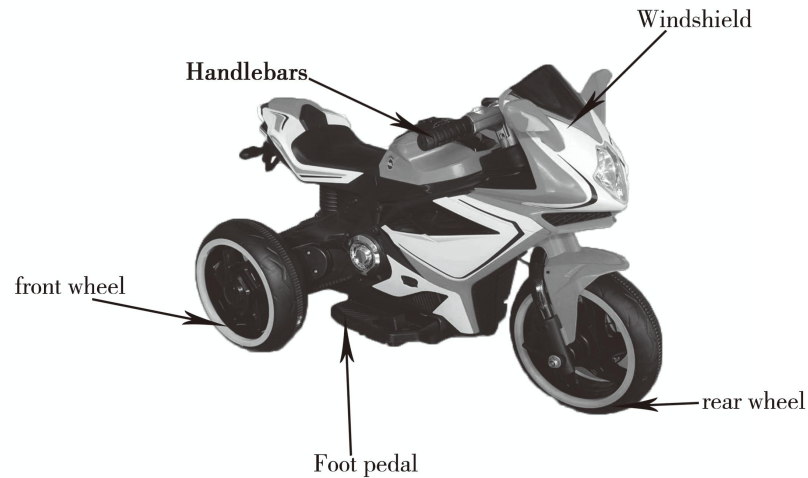


Specification parameter

| | | | |
|------------------------|-------------------------------------|--------------------|---------------------|
| Age of use: | 37-96Months of child use | Battery: | 6V4AH |
| Load limitation: | 30kg | Outline size: | 781*406*515mm |
| speed: | 3-5km/h | Power supply mode: | Charging type |
| Charger specification: | input: 110V-240V output: 6V500mA | Fuse: | Self-resetting fuse |
| Charging time: | About 8-10hours | Time of use | About 1-2 hours |

Product sketch



Maintenance and maintenance:

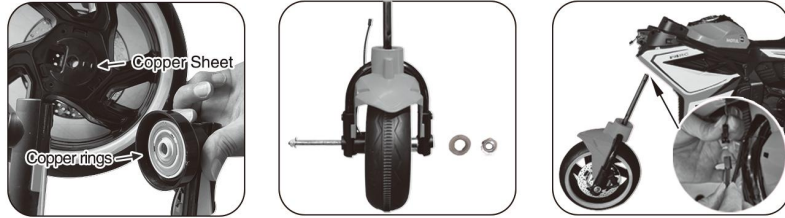
- After normal use of this product, adults should regularly (half a month is recommended) the main components of this afternoon, such as: Batteries, chargers, wires, enclosures, switches, steering systems and other components shall be inspected, and fastening components shall be exhausted. See if it is loose and stop using it until it is repaired when potential danger is found.
- Clean vehicles can be wiped with soft cloth which is slightly wet and dripleless, or with non-waxy furniture polishing instead of soft cloth polishing. Material parts to achieve surface finish effect. Do not wipe the plastic parts of toys with chemical solvents. Avoid Corrosion; do not use soap and water to clean vehicles, water will damage motors, batteries, resulting in short circuit circuit system.
- After using for a period of time, please lubricate the iron parts of the vehicle with lubricating oil to prevent rusting.
- Cars should be kept away from high temperature and humidity. Plastic parts can melt. When charging, keep away from inflammable goods, prevent Stop cattle fire.
- Please charge it in time after use. It must be operated by adults. If it is collected or not used for a long time, it must be filled first. Electricity is stored and recharged every month to extend battery life.
- When you stop using or place the car for a long time, please cut off the power supply of the car. All switches to "stop" Or "close" position. No unauthorized alteration of the product's structure and circuit system, maintenance and maintenance of key parts shall be allowed. Replacement should be conducted under the guidance of professionals.
- In areas where the supply voltage is unstable, it is recommended to install a power regulator to protect the battery when charging. Do not use fuses that do not conform to product specifications.

Simple maintenance:

| fault type | Cause analysis | Elimination method |
|---|---|--|
| The car won't move. | 1. Battery voltage is too low 2. Fuse protection 3. Wheel nuts fall off 4. Battery Connector Shedding 5. The battery is broken. 6. Electrical damage 7. Bad motor | 1. Charging Batteries 2. Stop for a few minutes and use it 3. Re-screw the nut 4. Re-insert 5. Replace new batteries 6. Maintenance at maintenance points 7. Maintenance at maintenance points |
| Batteries do not charge | 1. The connector on the battery is off. 2. Charger is not electrified 3. The charger is broken. | 1. Re-insert 2. Re-insert 3. Replacement of chargers |
| Short range | 1. Batteries are not charged 2. Batteries are old | 1. Recharge the battery 2. Replacement of batteries |
| There is a slight noise and heat when charging. | 1. belong to chemical reaction | normal |
| Slow speed | 1. battery old 2. Batteries are dead 3. overload 4. Road unevenness | 1. Replacement of new batteries 2. Recharge the battery 3. Reduce the load to less than 30 kg 4. Drive on flat ground |
| Noise in gearbox | 1. The gear is broken. | 1. Maintenance point maintenance |
| The car wobbled as it went along. | 1. Poor contact of motor connection wire 2. There is a dead point on the motor. | 1. Reconnect 2. Maintenance of Maintenance Points |

Installation steps

1. Install the front wheel



First of all, the front wheel with copper on the side of the fork with copper ring, and then into the front shaft at both ends with gasket nuts fixed. The front wheel assembly will be assembled into the body, and finally the power socket link, tighten the belt can be.

2. Install the handlebars



First, the axle into the body, sleeve on the bushing, aligned with the hole slot installation handlebars, through the screw fixed

3. Install rear wheel



Take two rear wheels and put them into the rear axle respectively, install the gasket, fix the nut and buckle the wheel cover.

4. Install the locomotive



First connect the front line, and then the front of the car body installed to the corresponding position, the screw can be fixed.

3

5. Connect the power supply



Remove the two screws on the seat plate, open the seat plate, remove the battery socket plastic protective cap, the red plug at the battery red socket plug that the total power is connected.

6. Install pedals



Take the pedal, first connect the pedal line, and then the pedal is installed to the corresponding position of the car body, clamp can be

7. Install mirrors and windshields



Insert the reflector into the front of the car in order of left and right.

8. Install license plates



Install the rear tag on the corresponding position of the rear body and tighten the screws.

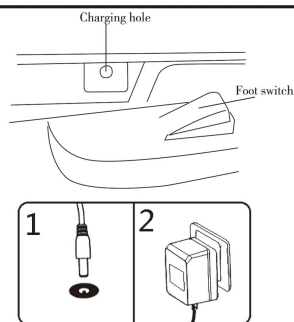
4

Battery warning:

- New and old batteries can not be mixed with different types of batteries.
- It is strictly forbidden to short circuit the positive and negative poles of batteries.
- Non-rechargeable batteries cannot be recharged.
- The rechargeable battery is removed from the toy before charging.
- Batteries are put in at the correct polarity.
- Rechargeable batteries can only be charged by adults.
- The exhausted batteries should be removed from the toys and handled properly to prevent children from playing.
- When you do not use toys for a long time, please remove the batteries from the toys and place them properly.

Charge:

- Power must be turned off when charging.
- The charging seat is under the seat cushion.
- Open the protective cover on the charging hole, and the charger plug is inserted into the socket of the charger socket.
- Then insert the charger into the power outlet.



Points for Attention in Charging:

- Charging must be done by adults.
- When using an electric vehicle for the first time, the battery must be charged for 4 ~6 hours.
- Permanently damaged batteries cannot be repaired.
When charging, please turn off the power supply. First, insert the charger plug into the charging hole to charge the charger. Plug in the power socket, the whole car can not be operated when charging.
- When the power is insufficient, please charge it in time. The normal charging time is 8~12 hours, but not more than 20 hours.
- Battery heating is a normal phenomenon in the charging process, but if the temperature is too high, it is necessary to check whether the charging current is too large or whether the battery is short-circuited.
- Water in the charging socket can not be charged, otherwise it will cause short circuit.
- Only the chargers and batteries equipped with this vehicle are allowed to be used. It is strictly forbidden to use other brands of chargers and batteries. Otherwise, the chargers and battery box wiring of this vehicle may be damaged.
- If the product is collected or not used for a long time, it must be fully charged and charged once a month to ensure the battery life.
- Chargers and batteries are not toys and children are not allowed to play.

Packing Diagram

Body 1, saddle 1, Charger 1,
accessories package 1,
front wheel 1, rear wheel 2,
reflector 2, front Fender 1,



Usage method ("Please check that the power switch is turned on correctly first.)

Manual function: (Note: There is no high and low speed switch in single drive.)

Forward:

1. Put forward/backward switch to forward position;
2. Push the pedal switch gently and the car will move forward.

Stop it:

Lift your foot and release the "pedal barrier" and the vehicle will stop moving.

Back off:

1. Put forward/backward switch to backward position.
2. Push the pedal switch gently and the car will move backwards.

Function description



Function Instructions:

- 1 Music /wireless connections
- 2 forward /stop /back
- 3 power switch
- 4 charging hole

WARNING: CHOKING HAZARD

— Small parts.

Not for children under 3 yrs.

Maintenance

1. Parents should check whether the main parts are in good condition, battery, charger, wire, plug, jack and other parts are damaged before use. Whether the screw is loose or not, whether there is a hidden danger in the safety, should stop using when it is found to be damaged, until it is repaired in good condition.
2. Use a little bit of lubricating to lubricate the iron part of the vehicle for a period of time to prevent wear and rust.
3. Vehicles should be placed away from the fire and avoid long-term illumination. Keep them flat and up-right. Do not lean down. In wet weather, the car should be parked indoors or covered with waterproof cloth.
4. Vehicles should be far away from the warmer objects, such as stoves and heaters, plastic parts may melt, charging, away from inflammable goods, to prevent fire.
5. Please charge in time after use. Charging must be operated by adults. If it is stored or not used for a long time, it must be charged first and then every three months. To extend battery life.
6. Use dry soft cloth to wipe the vehicle, or use non-waxy furniture polishing material instead of soft cloth to wipe the plastic parts, so as to achieve the surface polishing effect, do not use chemical solvents to wipe the plastic parts of the vehicle, do not use soap and water to clean the vehicle, do not drive in rainy or snowy weather, water will damage the motor, the vehicle's circuit system and the vehicle. Battery.
7. When stopping using or placing the product, please cut off the power supply of the product and dial all switches to "stop" or "close" position.
8. Do not use fuse that is not in conformity with the crystal specification of this product.
9. Do not change the structure and circuit system of this product without authorization. The maintenance work must be professional or technical personnel. Conduct under guidance.
10. Do not use toys for other purposes.
11. Strictly prohibit battery short circuit.
12. Rechargeable batteries can only be charged under adult monitoring.
13. The battery is put in the right polarity.
14. The exhausted batteries should be removed from toys, and should be handled well to prevent children from playing.

WARNING:

RISK OF FIRE. Do not bypass.

Do not mix old and new batteries.

Do not mix alkaline, standard (carbon-zinc), or re-chargeable batteries.

Only use the battery specified by the manufacturer.

Only use the charger specified by the manufacturer.

The battery in the vehicle is not replaceable

WARNING:

To reduce the risk of injury, adult supervision is required.

Never use in roadways, near motor vehicles, on or near steep

inclines or steps, swimming pools or other bodies of water,

always wear shoes, and never allow more than one rider.

CAUTION

The toy is to be assembled by an adult.

WARNING!

- 1.The toy may have potential sharp edges or sharp points or small points before assembly.Parts,therefore,must be assembled by adults.
- 2.Under the supervision and guidance of adults,use the car correctly Otherwise,it may cause injury to oneself or a third party.
- 3.Strictly prohibit dangerous places such as public streets, roads, slopes, swimming pools,etc.Driving and playing,otherwise it may cause traffic accidents and drowning hazards.
- 4.This toy car may have small parts falling off when it is used,so no. Suitable for children under 36 months.
- 5.This product is only suitable for children aged 37–96 months. Before use Please wear protective equipment,such as helmet,hand sheath,knee pads,etc.
- 6.Cars should not be overloaded.The maximum load is 30 kilograms
- 7.Chargers and batteries,wires,plugs and other components must be periodic Check whether it is damaged or not and stop using when it is found to be damaged until it is repaired.
8. Keep away from fire.
- 9.Please read the product instructions carefully before operation. This is very important and please Keep it for future reference.

Electric tricycle for children Installation and use instructions

- Early education function
- Lighting wheel
- LED headlights

