

#### Repair & Maintenance:

Please check the line, plug, shell and other parts regularly, once found damage, please stop using till it was repaired.

##### 1. Mechanical part

1.1 Check whether the rotation of wheels is agile and the driving motor of rear-wheel is normal after using it for half a month. Inject 3# methyl lubricant to the driving wheels regularly. 1.2 For safety, it is necessary to regularly check whether the function of direction rotation system is normal, and fixed screws and wheel fastener are loose. Review whether running parts such as wheel cover and wearing parts are damaged.

##### 2. Electrical part

2.1 Don't disassemble it in case of the malfunction of electrical part. It must be repaired by professionals. 2.2 See instructions for the usage of accumulator and charging methods. In case of leaving it unused for a long time, please turn off the power switch and fully charge the accumulator. Charge it once for every two months to prolong the service life of the accumulator. 3. Maintenance of appearance

3.1 This product is made from polypropylene. Neither make it exposure to burning sun nor use it at the ambient temperature of under 15°C. 3.2 Don't wash it with water. Wipe it with soft damp cloth during the maintenance.

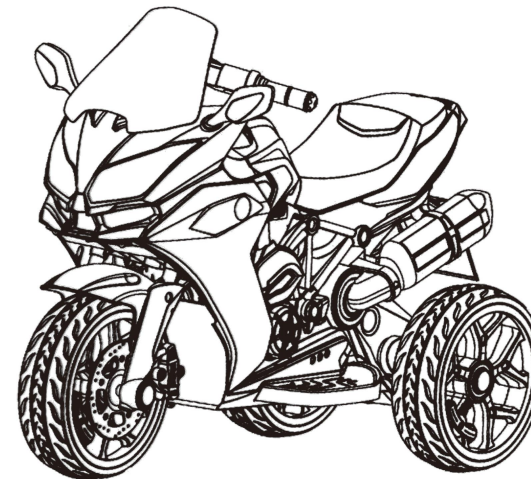
3.3 Don't ride it in rain to avoid the electrical failure.



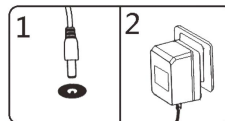
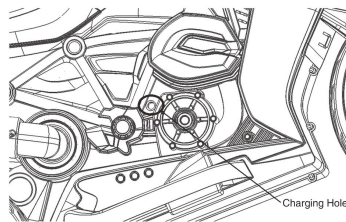
## Battery Motorcycle TAMCO 1200

Execution Standard:GB6675.1-2014/GB6675.2-2014  
GB6675.3-2014/GB6675.4-2014/GB19865-2005

- STORY
- SUSPENSION
- TWO WHEEL DRIVE
- MUSIC PLAYER
- ONE BATTERIES, TWO MOTORS
- LED HEADLIGHT



1. Connect wires of the charger and battery properly, then connect the charger with power supply.
2. After one-hour continuous use, should be charging, the charging time should be 10-12 hours, no more than 20 hours.
3. Charging must be conducted under the supervision of adults. Keep children away.
4. Please promptly charge it when the speed is low.
5. It is normal that the charger and accumulator are tepid during the charging.
6. People need to use the charger and battery which are equipped with the car.
7. Non-rechargeable batteries can be recharged.
8. Please take the battery out, which couldn't use anymore, and deal with it properly, to avoid the pollution.
9. It is prohibited to mix-use different kinds of batteries.
10. In case of leaving it unused for a long time, please turn off the power switch and fully charge the accumulator. Charge it once for every two months to prolong the service life if the accumulator.

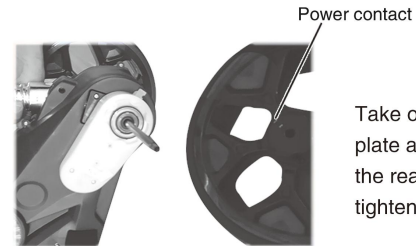


BREAKDOWN DRAWING

1. BODY
2. PEDAL PLATE
3. WIND MIRROR
4. FRONT WHEEL
5. BACK WHEEL
6. REFLECTIVE MIRROR

7. SIDE PLATE
8. FRONT DISK BRAKE
9. BACK DRIVING MOTOR
10. LUMINESCENT SCREEN
11. DISK BRAKE CALIBER
12. VENT-PIPE
13. BACK LICENSE PLATE

Install rear wheel



Take one side of the rear wheel with power contact plate and install it on the corresponding position of the rear wheel axle, put the steel cushion on it and tighten the nut.

Install front fender:



Insert the fender into the steering shaft in the direction shown in the picture.

**Install front wheels:**



Figure 1



Figure2

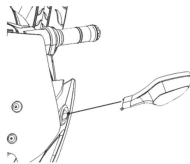


Figure3



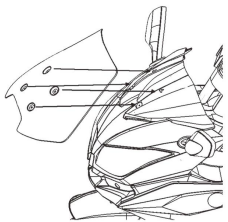
Figure4

Unscrew the nut on the left axle, pull out the AXLE (Fig. 1,2) and connect the power supply (Fig. 3) as shown in Fig. 4. Install the side of the wheel with the power contact into the front fork, put the axle on and add a steel pad to the inside of the front fork, just fix it with a nut.



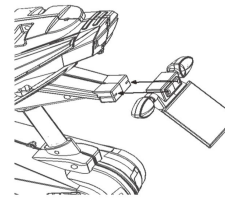
**Install review mirror**

Insert the review mirror into the hole of head, attention to the left and right, press it till a sound appear. Finished the other one in same way.



**Install wind plate**

Match the holes on the wind plate and head of car, insert the screw, then tighten.

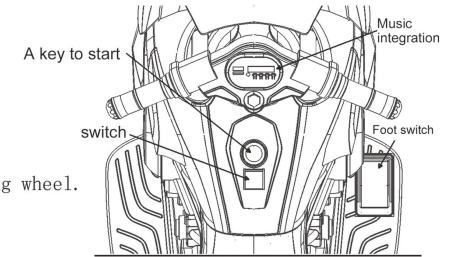


**Install back license plate**

Tighten the lampshade with screwdriver, as picture shows, match the holes on the license plate and body, then tighten them.

**Misic**

Press the button on the steering wheel.



**Instructions:**

1. After the rider sits down, set the power switch "ON" and step on the pedal switch to make the tricycle move on.
2. Press the music button to select and play music.

**The usage of charger and matters needing attention:**

Put the power off before charging. The charging hole is under the seat palte. Open the protective cover, connect the charger and jack socket. Then insert into the power socket.

# WARNING: CHOKING HAZARD

— Small parts.

Not for children under 3 yrs.

## Maintenance

1. Parents should check whether the main parts are in good condition, battery, charger, wire, plug, jack and other parts are damaged before use. Whether the screw is loose or not, whether there is a hidden danger in the safety, should stop using when it is found to be damaged, until it is repaired in good condition.
2. Use a little bit of lubricating to lubricate the iron part of the vehicle for a period of time to prevent wear and rust.
3. Vehicles should be placed away from the fire and avoid long-term illumination. Keep them flat and up-right. Do not lean down. In wet weather, the car should be parked indoors or covered with waterproof cloth.
4. Vehicles should be far away from the warmer objects, such as stoves and heaters, plastic parts may melt, charging, away from inflammable goods, to prevent fire.
5. Please charge in time after use. Charging must be operated by adults. If it is stored or not used for a long time, it must be charged first and then every three months. To extend battery life.
6. Use dry soft cloth to wipe the vehicle, or use non-waxy furniture polishing material instead of soft cloth to wipe the plastic parts, so as to achieve the surface polishing effect, do not use chemical solvents to wipe the plastic parts of the vehicle, do not use soap and water to clean the vehicle, do not drive in rainy or snowy weather, water will damage the motor, the vehicle's circuit system and the vehicle. Battery.
7. When stopping using or placing the product, please cut off the power supply of the product and dial all switches to "stop" or "close" position.
8. Do not use fuse that is not in conformity with the crystal specification of this product.
9. Do not change the structure and circuit system of this product without authorization. The maintenance work must be professional or technical personnel. Conduct under guidance.
10. Do not use toys for other purposes.
11. Strictly prohibit battery short circuit.
12. Rechargeable batteries can only be charged under adult monitoring.
13. The battery is put in the right polarity.
14. The exhausted batteries should be removed from toys, and should be handled well to prevent children from playing.

### WARNING:

RISK OF FIRE. Do not bypass. Replace only with 7A

Do not mix old and new batteries.

Do not mix alkaline, standard (carbon-zinc), or re-chargeable batteries.

Only use the battery specified by the manufacturer.

Only use the charger specified by the manufacturer.

The battery in the vehicle is not replaceable

### WARNING:

To reduce the risk of injury, adult supervision is required.

Never use in roadways, near motor vehicles, on or near steep

inclines or steps, swimming pools or other bodies of water,

always wear shoes, and never allow more than one rider.

### CAUTION

The toy is to be assembled by an adult.

CATALOGUE

1.INSTRUCTIONS AND CONFIGURATION

2.BREAKDOWN DRAWING

3.INSTALLATION PROCEDURE

4.METHOD OF

USAGE 5.CHARGING

6.MAITANNACNE AND REPAIR

INSTRUCTIONS AND CONFIGURATION

Instructions of Children's Electric Motorcycle

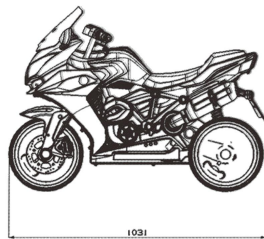
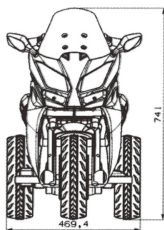
Thank you for purchasing the children's electric Tricycles produced by our company. Please take some time and read these instructions before using it to ensure easy

operation, and these instructions make you fully understand this product and properly use it.

Warning: this product is not a transportation vehicle, and it must be used under the care of guardians. This toy is unsuitable for children under 3 years due to its maximum speed.

Before using it, guardians must conduct safety education over their kids.

|                   |   |               |                          |
|-------------------|---|---------------|--------------------------|
| Age requirements: | 3-8 years old   | Power supply: | 12V4.5                   |
| Maximum loading:  | 30KG  | Measurement:  |                          |
| Maximum speed:    | 3-5KM/H   | Power supply: | Rechargeable             |
| Charger:          | input:100-240V<br>AC.50-60Hz, 0.26A<br>output:12VDC 800mA | Battery life: | 280 times of<br>charging |
| Charging time:    | charging for 8-12<br>hours.                               | Fuse mode:    | Self-centering           |



Simple troubleshooting:

|  |  |   |
|--|--|---|
| Motor malfunction                                | 1. Is the connection of pedal switch good?<br>2. Is the welding of motor terminals good?<br>3. Is the connector of motor lead good?<br>4. Does it rotate when disengaging the connector of motor and connecting it to battery?   | No,repair the pedal switch;yes,go to next item.<br>No,weld the terminal;yes,go to next item.<br>No,insert the connector well;yes,go to next item.<br>No,change motor;yes,the driving circuit board has failure,and user must send it for professional repair. |
| Low speed  | 1. Is the voltage of battery over 6.3V?<br>2. Is it quiet after directly connecting the motor(gear box) to battery?<br>3. Is the rotation of gear box good after removing gear box?<br>No,change it;yes,go to next item.<br>No,go to next item;yes,the driving circuit board has failure,and user must send it for professional repair.No,change gear box;yes,change the motor.                                  | No,charge it;yes,go to next item.<br>No,go to next item;yes,the driving circuit board has failure,and user must send it for professional repair.<br>No,change gear box;yes,change the motor.  |
| Failing to drive automatically                   | 1. Does the automatic switch lead fall off?<br>2. Is the automatic switch damaged?   | Yes,connect it well;no,go to next item.<br>Yes,replace the switch and insert the contacting pin.  |
| Failing to be recharged                          | 1. Does the output terminal of charger have the voltage of 6.8V-8.0V?<br>2. Insert the input and output plug of charger,and pull out the insertion spring. Is the voltage 6.8V-8.0V?<br>3. Does the fixed part of charging seat loosen or welding spot fall off?<br>Yes,change and replace the charger;yes,go to next item.<br>Yes,change the battery;no,go to next item.<br>Yes,connect the charging seat well. | Yes,change and replace the charger;yes,go to next item.<br>Yes,change the battery;no,go to next item.<br>Yes,connect the charging seat well.  |
| The motorcycle is driving without sound or light | 1. Check the plug of music plate   | No,replace it;yes,send it for professional repair.  |
| Motor rotates but the tricycle does not move     | 1. Does the right rear-wheel rotate?<br>2. Does the motor or gear box loosen?<br>3. Is the gear box or gear at all levels damaged?   | Yes,make the wheel down to the ground;no,go to next item.<br>Yes,take off the gear box and fasten the screws of motor;no,go to next item.<br>Yes,replace the gear box   |
| The tricycle can't stop                          | Is the pedal switch stuck?   | Repair the pedal switch.  |

1. before connect the battery, please move out the plastic protector which on the battery if have.

2. Before turn on the power, please be sure the charger unplug on the car Warning!

1. This product contains small parts, and is not suitable for children under three years old.
2. It is not a transportation vehicle. Don't ride it on road. Use it under the supervision of adults.
3. Charging must be conducted under the supervision of adults. It is normal that the charger and accumulator are tepid during the charging.
4. The assembly must be performed by adults. Don't let kids touch small parts to avoid the risks of swallowing them!
5. Don't short circuit the positive and negative electrodes of battery to avoid the risk of burning and fire!
6. Please turn off the power switch under non-riding status.
7. To ensure the electrical safety, the maximum current of fuse is 7A. Don't charge the parameters at random.
8. Please hold the charger and exert force vertically when inserting or pulling out the charger. Don't flip around.
9. During the use of children, adults or elder children are prohibited to push forward from behind to prevent the damage of motor.
10. As there is important information on the package and instruction, they must be retained.
11. This toy has no brake.
12. Protective equipment should be worn, not to be used in traffic.

EXPORTER:

TAMCO SUMMIT VEHICLE JIANGMEN CO.LTD  
ROOM 910 BUILDING 2 KINWAI PLAZA BAISHI ROAD PENGJIANG  
DISTRICT JIANGMEN CITY GUANGDONG CHINA