

Warning

1. The toy may have potentially sharp edges or sharp points or small parts prior to assembly, so it must be assembled by an adult.
2. Use The car properly under adult supervision or risk injury to yourself or a third party.
3. Do not drive or play in dangerous places such as public streets, roads, slopes, swimming pools, etc. Otherwise, it may cause traffic accident and drowning.
4. This toy car may have small parts falling off during use, so it is not suitable for children up to 36 months of age.
5. This product is only suitable for children aged 37–96 months. Please put on protective equipment before use, such as helmet, hand protective cover, kneepad, etc.
6. The car can not be overloaded with a maximum load of 30KG.
7. chargers and batteries, wires, plugs and other components must be checked regularly for damage and should be stopped from being used until they are repaired.
8. Stay away from fire.
9. It is important to read the product instructions carefully before doing so and keep them for future reference.
10. The remote control uses two cells of No. 7 battery, which must be placed in the correct polarity position.

Certificate of conformity

model: _____

Inspector: _____

Production date: _____

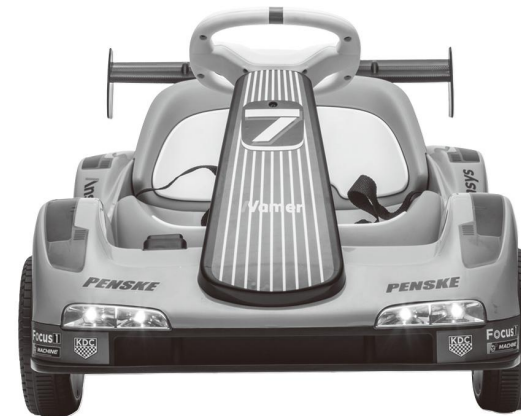
TAMCO[®]

Electric four-wheeler for children

Installation and operation manual

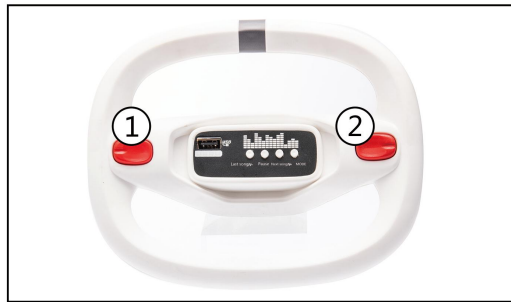
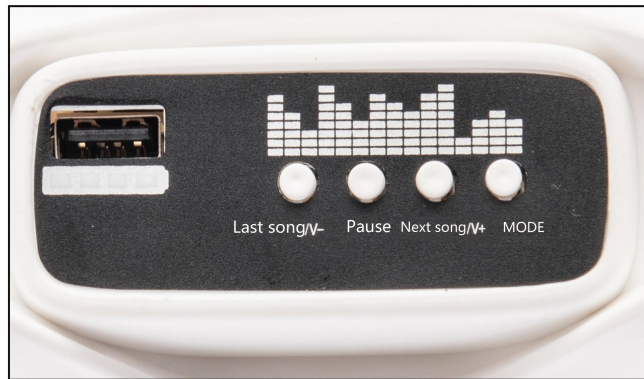
Applicable Age: 37–96 Months Child Use

- Front and rear shock absorbers,
- convenient pull rod,
- 2.4 g one-to-one function,
- hydraulic double door,
- swing function,
- LED light board,



Please take good care of the important information in it

Instructions for use



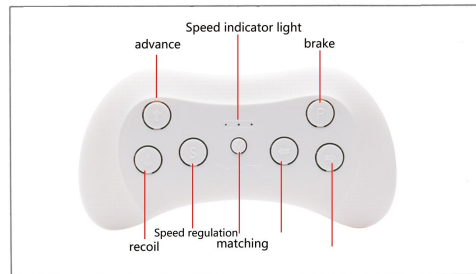
① music

② Song

Remote control functions and instructions

- Do not switch the forward and backward buttons during vehicle movement to avoid damaging the gearbox and motor.
- The remote control needs a battery to work properly.
- The remote control requires the use of a guardian.
- Remote control is preferred.

★ Code alignment method:
Press and hold the code key, the indicator flashes, turn on the power of the stroller, and the code is successfully matched



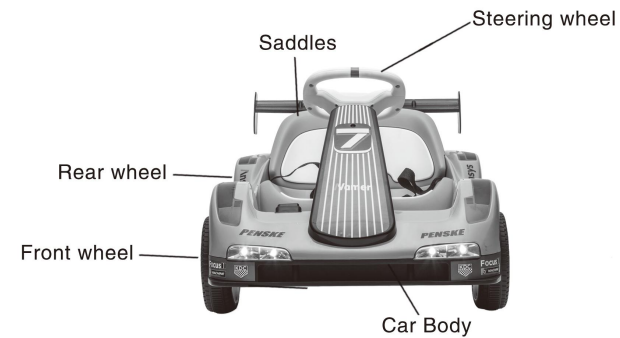
Precautions for use

1. Not in the streets, roads, slopes and other hazardous areas.
2. Please be on a well-level ground, please do not use on the smooth surface (such as marble, floor tiles) and other surfaces.
3. This product limited by one person, can not be overloaded, the maximum load 30KG.
4. Children must ride under adult guidance and caretakers must not leave during cycling.
5. Do not modify the vehicle wiring or additional charging device.
6. Do not use in water, do not pour water and other liquids in the car.
7. The car should not be blocked in the process of moving the car, so as to avoid damage to the device, such as blocked phenomenon, please immediately release Foot switch, remove the obstacles before riding,
8. The car should be timely charging slow cycling speed, cycling for too long will cause shortened battery life.
9. Do not use, please turn off the power switch, unplug the battery connector when not in use for a long time.
10. Do not drive in rainy weather.
11. The main use of PP car material, non-toxic, non-radiation, safe to use for a period of three years.

Packing Instruction

- | | | | |
|-------------------------|---|----------------------|---|
| ● Product specification | 1 | ● The front wheel | 2 |
| ● Car body | 1 | ● The rear wheel | 2 |
| ● The saddle | 1 | ● The steering wheel | 1 |
| ● The remote control | 1 | ● Wheel cover | 4 |
| ● The charger | 1 | | |
| ● Accessories package | 1 | | |

Schematic



Thank you for choosing our electric baby carriage

Please read the manual before using this product, it will tell you the correct operation method and installation steps. To avoid incorrect operation of the product and damage or injury to your baby. This manual shall be properly kept and kept in an accessible place,

Specifications

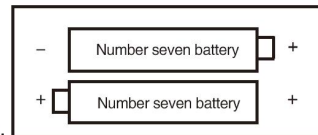
Storage battery	12V 4.5Ah
Motor	12V380*2
Applicable Age	For children aged 37–96 months
Maximum load	30kg
Dimensions	108x62x40CM
Speed	3km/h
Charger	Input: 100V–240V Output: 12V800mA
Usage time	Charge for 10–12 hours. Use for 1–2 hours

Charging points

1. When using an electric car for the first time, the battery must be fully charged for 16 hours! Otherwise the battery will be permanently damaged and beyond repair. The charging timeshould not exceed 18 hours.
2. When charging, first plug the charger DC into the charging socket, and then plug the charger into the power socket.
3. Each continuous use of 1 hour, you must be timely charging, normal charging time for 10–12 hours.
4. Charging process charger or battery heating phenomenon (below 600C) is normal.
5. When the electric baby carriage is not in use for a long time, it must be recharged at least once a month.

Battery instruction for Remote Control

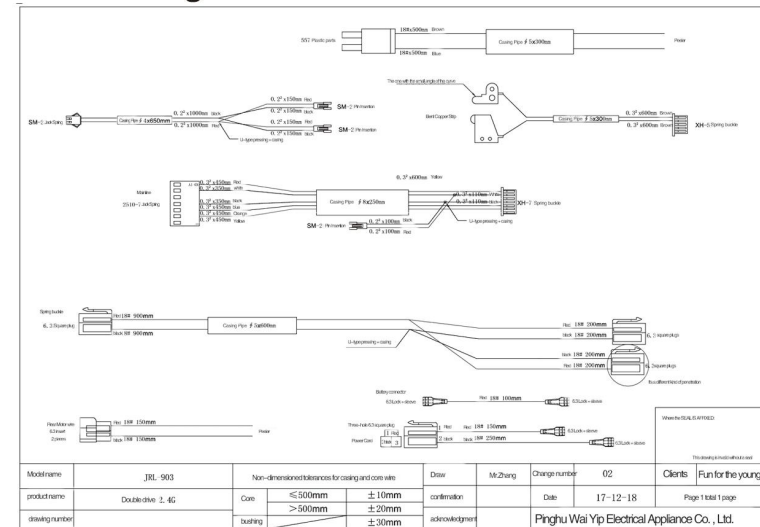
1. When installing the battery, first open the battery cover, then install the battery according to the polarity, lock the battery cover. In the same way, take out the battery.
2. The remote control uses 2 # 7 batteries.
3. The non-rechargeable battery can not be charged.
4. rechargeable batteries can only be charged under adult supervision.
5. The rechargeable battery should be removed from the toy before recharging.
6. Different types of batteries or old and new batteries should not be mixed.
7. Batteries should be placed at the correct polarity.
8. The depleted battery should be removed from the toy.
9. The power terminal must not be short-circuited.



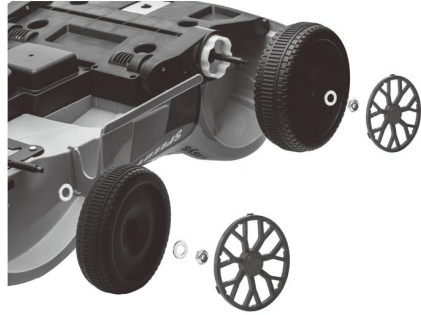
Trouble shooting

Fault type	Detection site	Method of elimination
The Motor won't run	<ol style="list-style-type: none"> 1. Is the foot switch in good contact? 2. Is the welding wire on the motor terminal in good condition? 3. Is the connector of the motor lead plugged in well? 4. Will the motor plug-in disconnect, directly, connected to the battery rotation? 	No, fix the foot switch; yes, next. No, weld the terminals to the wire; yes, next. No, plug the connector in; yes, next. Do not turn, change the motor; turn, Drive Circuit Board failure, send professional repair point repair.
To go only forward without going back, or to go only backward without going forward	<ol style="list-style-type: none"> 1. Detect reverse switch, with a three-meter test, good contact? 2. Drive line to reverse switch wiring, is it good? 	No, change the reversing switch; yes, next. No, the line connected; yes, Drive Circuit Board failure, send professional repair point repair.
It's slow	<ol style="list-style-type: none"> 1. Check if the BATTERY VOLTAGE IS ABOVE 12V? 2. Will the motor (with gearbox) directly connected to the battery, speed up or not? 3. Unload the gear box, check the gear rotation, move well or not? 	No, charge.–yes, next. No, next item; yes, Drive Circuit Board failure, send professional repair point repair. No, change the gear box; yes, change the motor.
It's not charging	<ol style="list-style-type: none"> 1. Does the charger output terminal have 12V voltage? 2. Will charger input, output plug good, will the battery end two plug springs pull out, test has 12V voltage? 3. Check that the charging seat fastener is loose and the solder joint is free? 	No, change the charger; yes, next. Yes, change the battery. No, next. Yeah, plug in the charger.

Circuit Diagram

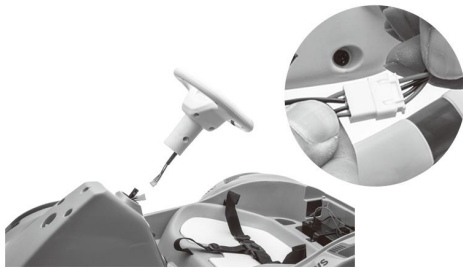


Instructions



1. Install the tires

Start with the front and rear wheels. Fix the gasket, front wheel, gasket in turn, and then fix it with nuts. Fix the rear wheel, gasket in turn, and then fix with nuts. And install the front and rear wheels on the other side in the same way.



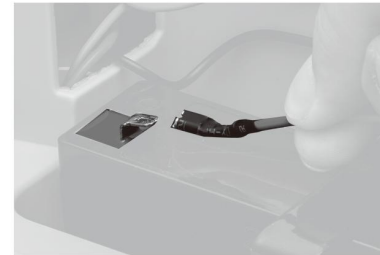
2. Install the steering wheel

Connect the steering wheel to the body wire, turn the steering wheel to the steering lever, Use a screw nut to fix



3. Install the front guard plate

The corresponding bayonet is stuck and fixed with a screw.



4. Connect power

The positive and negative wires can be connected



5. Install rear backrest

Clamp the backrest into the corresponding position and fix it with two screws.

6. Install the rear tail

Put the tail in position
Clamp in and fix with two screws.



WARNING: CHOKING HAZARD

— Small parts.

Not for children under 3 yrs.

Maintenance

1. Parents should check whether the main parts are in good condition, battery, charger, wire, plug, jack and other parts are damaged before use. Whether the screw is loose or not, whether there is a hidden danger in the safety, should stop using when it is found to be damaged, until it is repaired in good condition.
2. Use a little bit of lubricating to lubricate the iron part of the vehicle for a period of time to prevent wear and rust.
3. Vehicles should be placed away from the fire and avoid long-term illumination. Keep them flat and up-right. Do not lean down. In wet weather, the car should be parked indoors or covered with waterproof cloth.
4. Vehicles should be far away from the warmer objects, such as stoves and heaters, plastic parts may melt, charging, away from inflammable goods, to prevent fire.
5. Please charge in time after use. Charging must be operated by adults. If it is stored or not used for a long time, it must be charged first and then every three months. To extend battery life.
6. Use dry soft cloth to wipe the vehicle, or use non-waxy furniture polishing material instead of soft cloth to wipe the plastic parts, so as to achieve the surface polishing effect, do not use chemical solvents to wipe the plastic parts of the vehicle, do not use soap and water to clean the vehicle, do not drive in rainy or snowy weather, water will damage the motor, the vehicle's circuit system and the vehicle. Battery.
7. When stopping using or placing the product, please cut off the power supply of the product and dial all switches to "stop" or "close" position.
8. Do not use fuse that is not in conformity with the crystal specification of this product.
9. Do not change the structure and circuit system of this product without authorization. The maintenance work must be professional or technical personnel. Conduct under guidance.
10. Do not use toys for other purposes.
11. Strictly prohibit battery short circuit.
12. Rechargeable batteries can only be charged under adult monitoring.
13. The battery is put in the right polarity.
14. The exhausted batteries should be removed from toys, and should be handled well to prevent children from playing.

WARNING:

RISK OF FIRE. Do not bypass. Replace only with 7A

Do not mix old and new batteries.

Do not mix alkaline, standard (carbon-zinc), or re-chargeable batteries.

Only use the battery specified by the manufacturer.

Only use the charger specified by the manufacturer.

The battery in the vehicle is not replaceable

WARNING:

To reduce the risk of injury, adult supervision is required.

Never use in roadways, near motor vehicles, on or near steep

inclines or steps, swimming pools or other bodies of water,

always wear shoes, and never allow more than one rider.

CAUTION

The toy is to be assembled by an adult.