






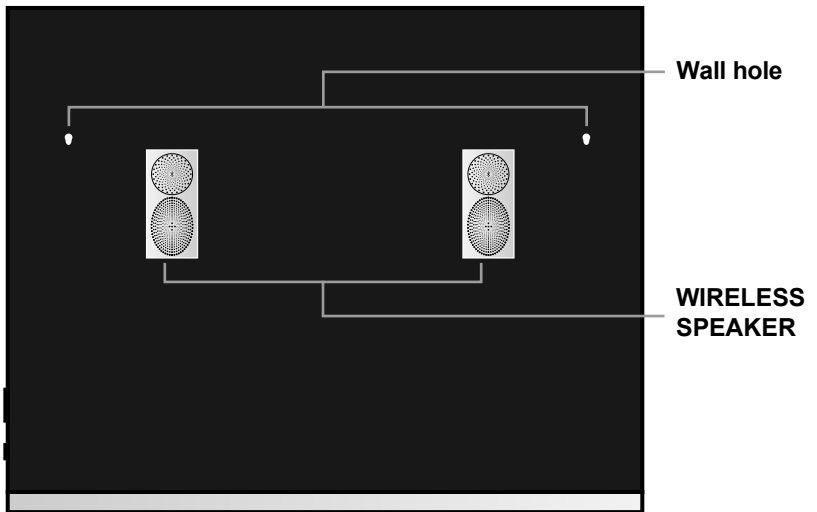
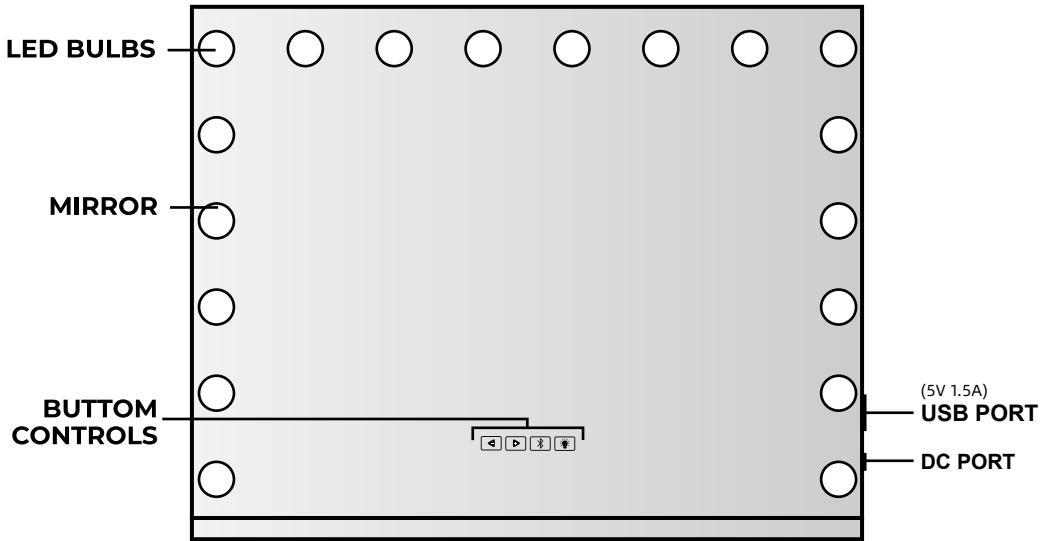


INSTRUCTION MANUAL

**LED Hollywood Style
Vanity Mirror**

Before You Start

-  Please read all instructions carefully.
-  Retain instructions for future reference.
-  Separate and count all parts and hardware.
-  Read through each step carefully and follow the proper order.
-  We recommend that, where possible, all items are assembled near to the area in which they will be placed in use, to avoid moving the product unnecessarily once assembled.
-  Always place the product on a flat, steady and stable surface.
-  Keep all small parts and packaging materials for this product away from babies and children as they potentially pose a serious choking hazard.



BUTTON CONTROLS



◀ 1. Short press to previous song
2. long press to adjust the volume

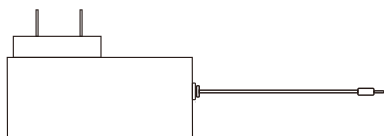
▶ 1. Short press to the next song
2. long press to adjust the volume

⌘ Turn on the Bluetooth function

Bluetooth Function - Connect this bluetooth vanity mirror with lights to your phone and you can directly play songs with its high quality speakers. The hollywood vanity mirror with lights has a microphone inside to help answer phone

💡 1.Short press to control the switch and change the light color
2.Long press to adjust brightness
Bluetooth domain name : music mirror

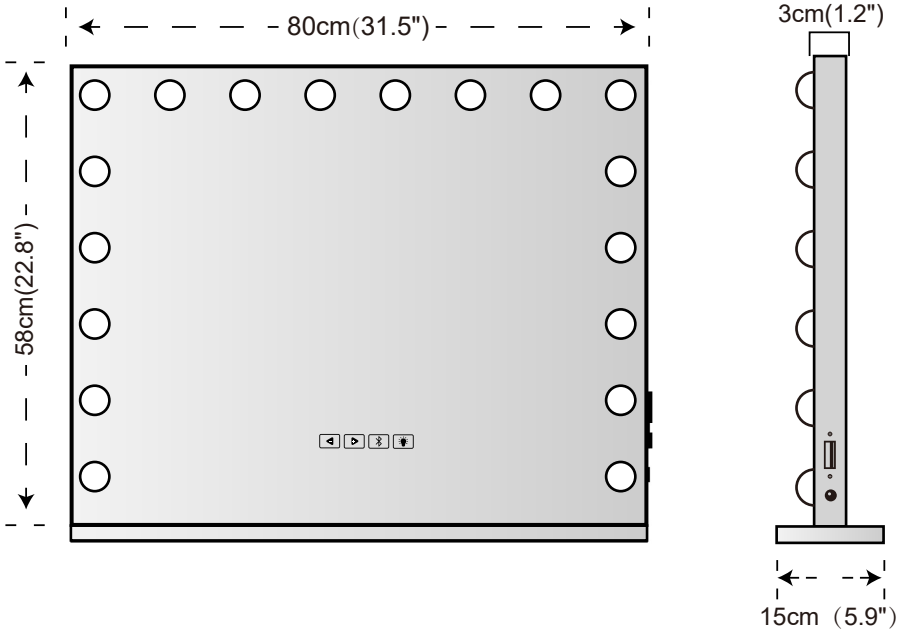
CONTAINED ITEMS



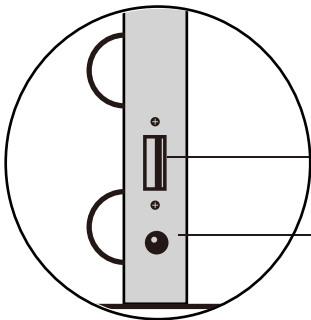
12V Power Adapter
Input 110-240V Output 12V 2A

Please use included power adapter, Do not use an unsuitable power adapter, otherwise it could damage the mirror electronics.

PRODUCT SIZE



CONTAINED ITEMS

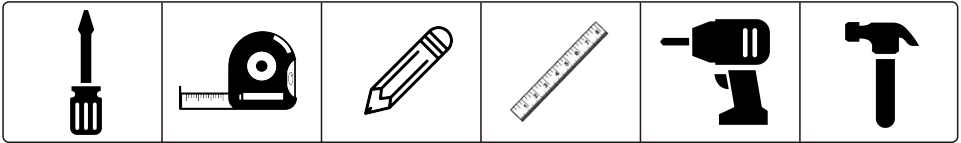


USB Port for charging the electronic advices, like mobile phone.

Connect the power to use LED Mirror lights.
Disconnect the power to off LED Mirror lights.

INSTALLATION STEPS

Preparation Tools (Not Included) :



Screwdriver

Tape Measure

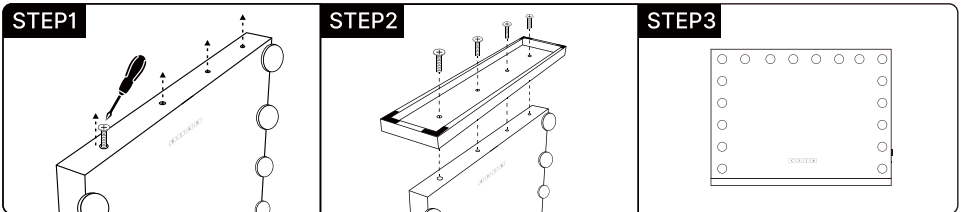
Pencil

Level Ruler

Electric Drill

Hammer

Desktop

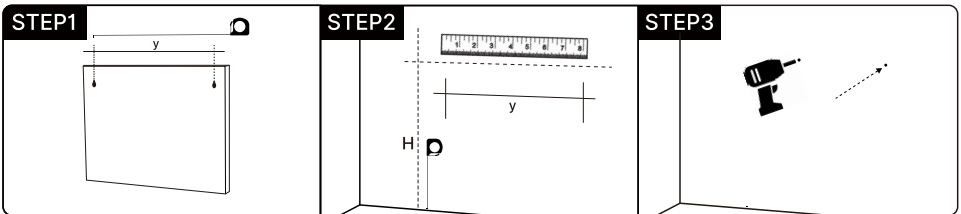


Unscrew the screws at the bottom of the mirror.

Align the holes on the base and the bottom of the mirror, and tighten the screws.

Installation is completed.

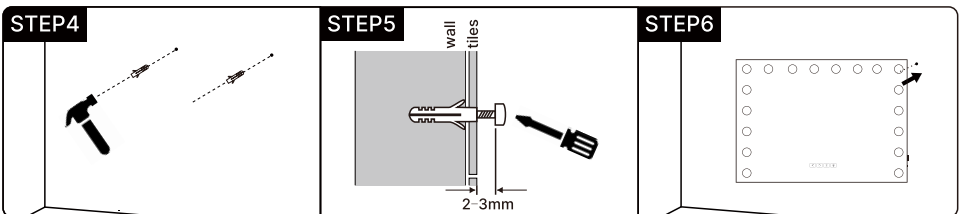
Wall-mounted



Use tape to measure the distance between the two hooks.

Use pencil to draw parallel lines on the wall, The intersection is the punch position.

Use electric drill to punch holes at the intersection.



Use hammer to drive the expansion tube into the hole

Use screwdriver to screw the expansion tube.

Hang up the mirror, installation is completed.