

Ping-Pong Table

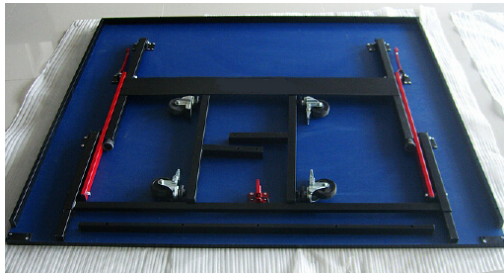


Installation Instructions

PARTS LIST

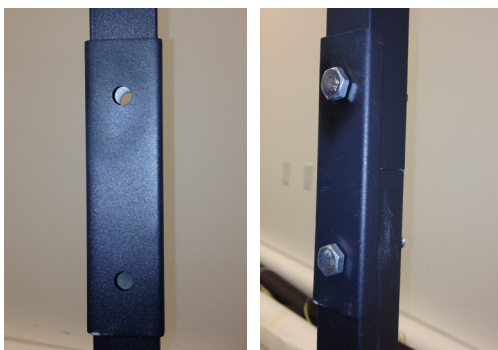
	Part Description	Quantity
1	Table Surface w/ Undercarriage Assembly	2
2	Net and Post Set	1
3	T Leg	4
4	Caster	8
5	Bolt Plate	8
6	Bolt	8
7	Metal Washer	16
8	Nylon Locking Nut	8

ASSEMBLY INSTRUCTIONS



1. Place table flat with playing surface down. When you set the table down, make sure that the space beneath it is clear of anything that can scratch the surface.

2. Unlock the undercarriage and raise the legs to a vertical position.



3. Lower the T-Leg into position. Apply bolt plate to junction of T-Leg and undercarriage. Insert bolt before positioning washer and nut to tighten. Then, tighten bottom bolt as well.

4. Twist the casters into the bottom of the T-Leg.



5. Re-lock the undercarriage into the storage position and raise the table onto the wheels. Standing table up may require two people! Please be careful and read warning below.

WARNING: End legs (without casters) should be in locked, storage position so that weight of the table is fully on the undercarriage (with casters) during set up. Damage may result if table set up procedure is not executed as specified in the instructions.

All assembly instructions and all descriptions of bolts and parts are given from the point of view of someone outside looking inward.

NOTE: The two halves do not connect to one another. They remain two separate pieces. You will apply the net to the middle where they meet .

NET ASSEMBLY



1. Make sure table is in playing position before installing the net. To do so, release the safety latch and carefully lower each table half.

2. Attach one net clamp to the middle edge of where the table halves meet. Repeat this with other net clamp on opposite side. Then, slide net post into corresponding clamp and repeat for the other side. Make sure the white fabric of the net is on top. Use strings at either end of the net to tighten the net and attach to base of net post securely.

YOU ARE NOW READY TO PLAY!





USAGE INSTRUCTIONS

Unfolding the Table: When unfolding the table, the first step is to lock the casters. Then, take caution so that all areas around you are clear. Please remember, the table is very heavy. If you are worried that it may be too heavy, it is recommended that at least two people unfold the table. To unfold the table, push on the lock to release the table from the storage position. After unlocking the table, slowly lower the table half down. Do the same for the other half. Check to make sure that the locking hinge bar attached to each leg of the table is straight (locked). Then install the net and post set, and enjoy the table tennis table.

Folding the Table: To fold the table into storage position, the first step is to lock the casters. Next, ensure that the net and post set have been removed from the table. Failure to do so could cause damage to the table when trying to fold the table with the net and post set still attached. Then, unlock (by bending) the locking hinge bar to enable the H-bar to be stored against the bottom of the table surface. Please remember that the table is very heavy. Ensure that you have enough ceiling height to raise the table half. If you are worried that the table will be too heavy for you to lift, it is recommended that at least two people fold the table. Raise the table half to the vertical position until you hear a loud clicking noise and make sure that the lock is fully engaged.

Playback Position: Playback position is achieved by unfolding one half of the table and folding the other half. Make sure that the locks of the folded half are fully engaged. Always use the locking casters and place them in lock position when the table is in playback position for added safety.

Leveling: The table comes with leveling feet. Spin the leveling feet to adjust the height and make the table level.

Using the locking casters: When the table is in storage position, or in play position, please remember to always lock the casters for added safety.