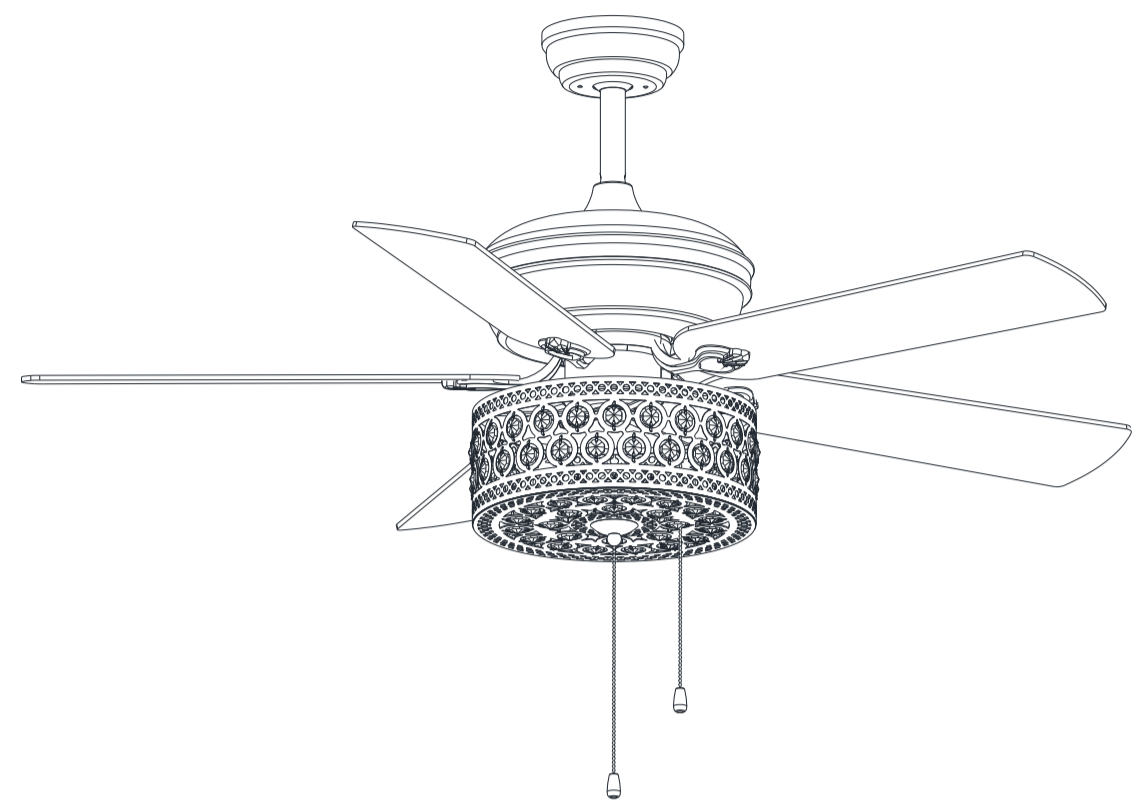


CUCULIDAE

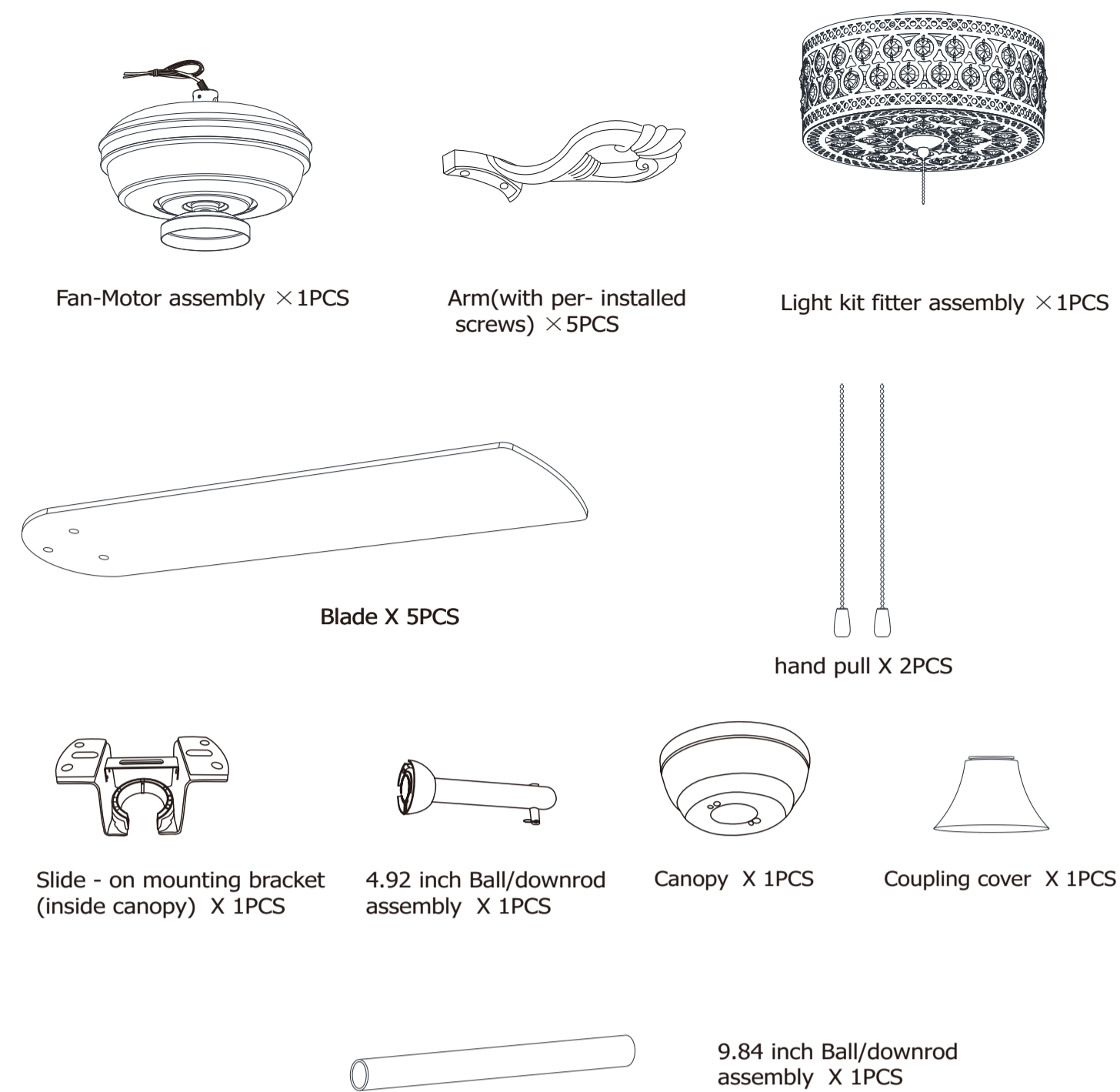
CEILING FAN



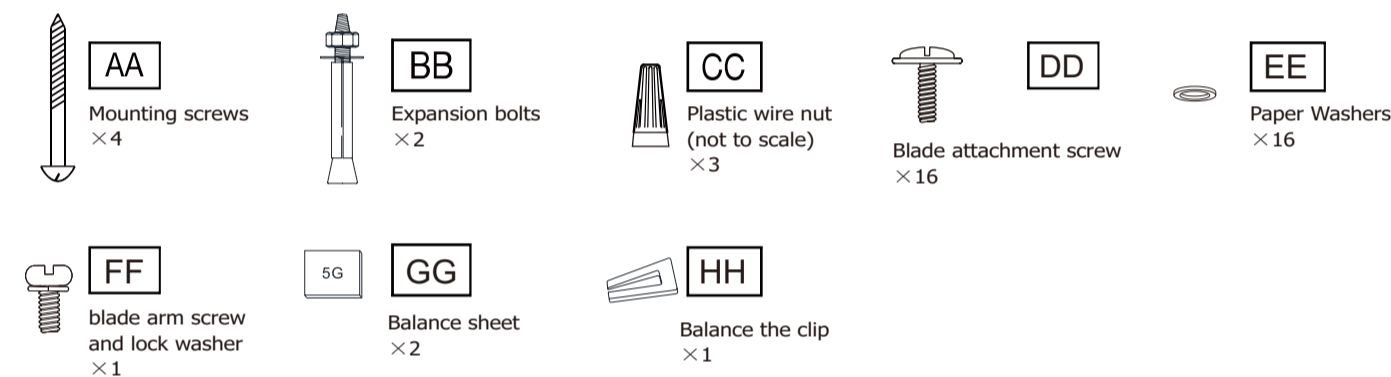
Y52CAC3010-CH

52-INCH DEROCATE CEILING FAN USE AND CARE GUIDE

Pre-Installation

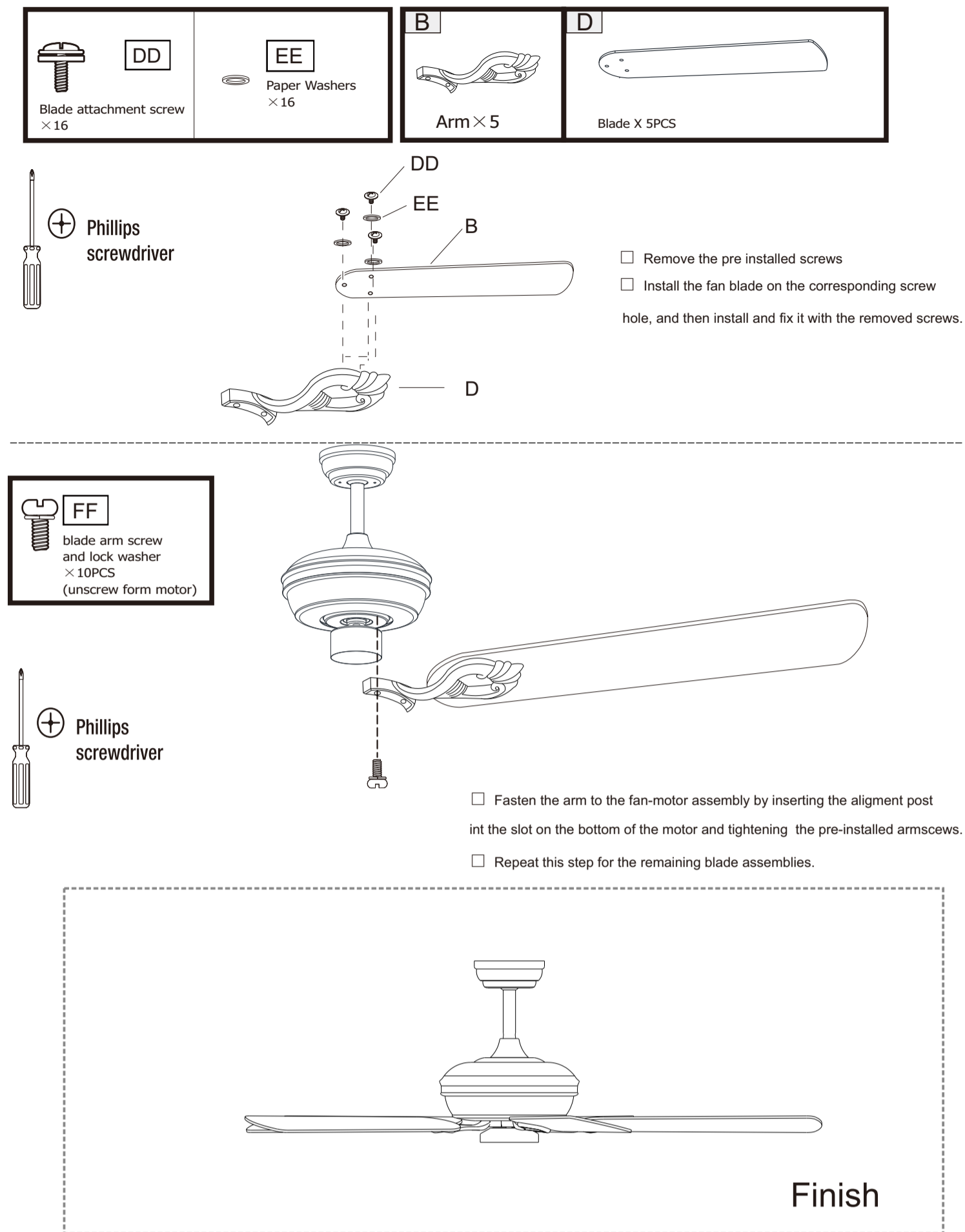


Parts Kit

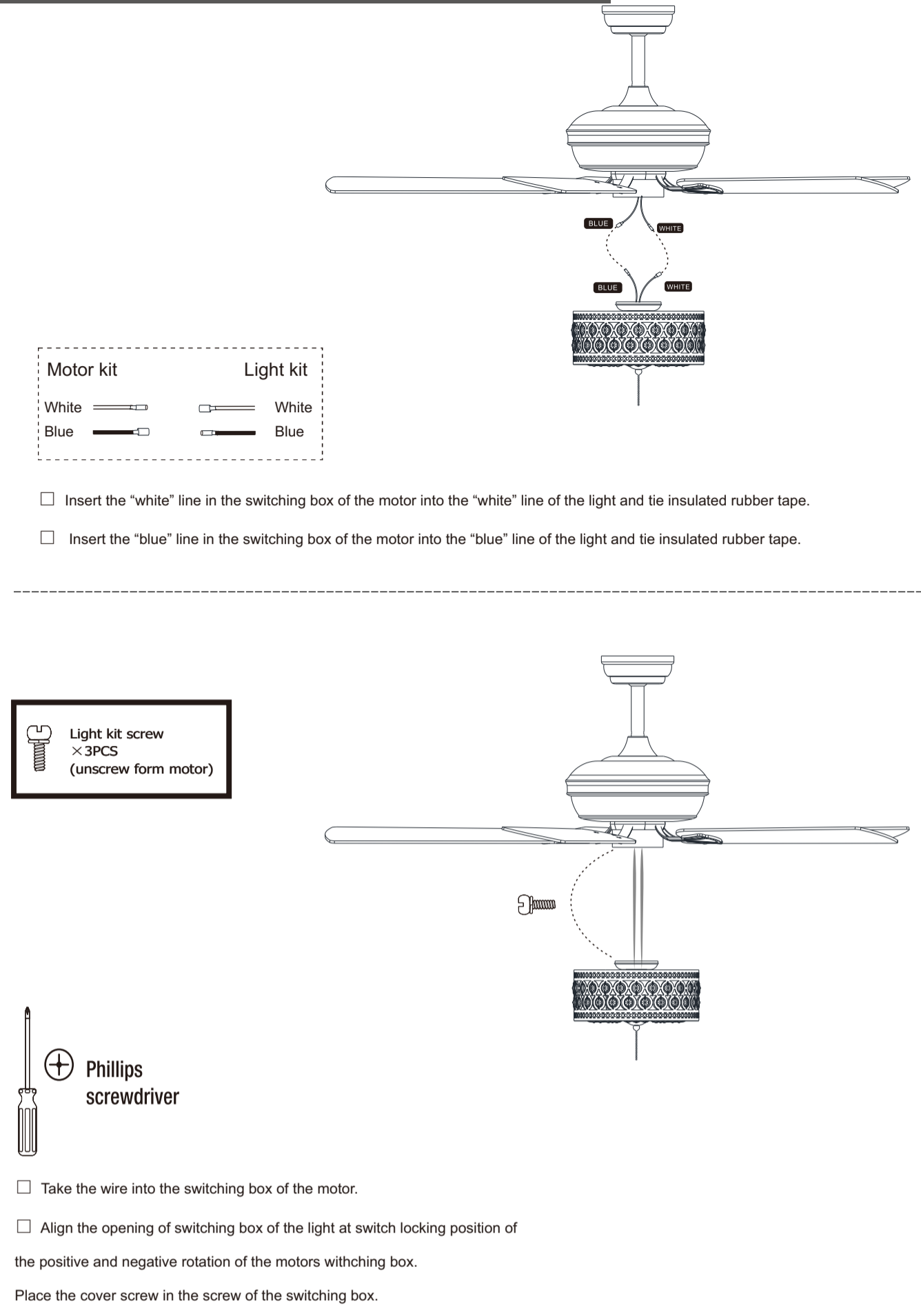


NOTE Hardware not shown to actual size.

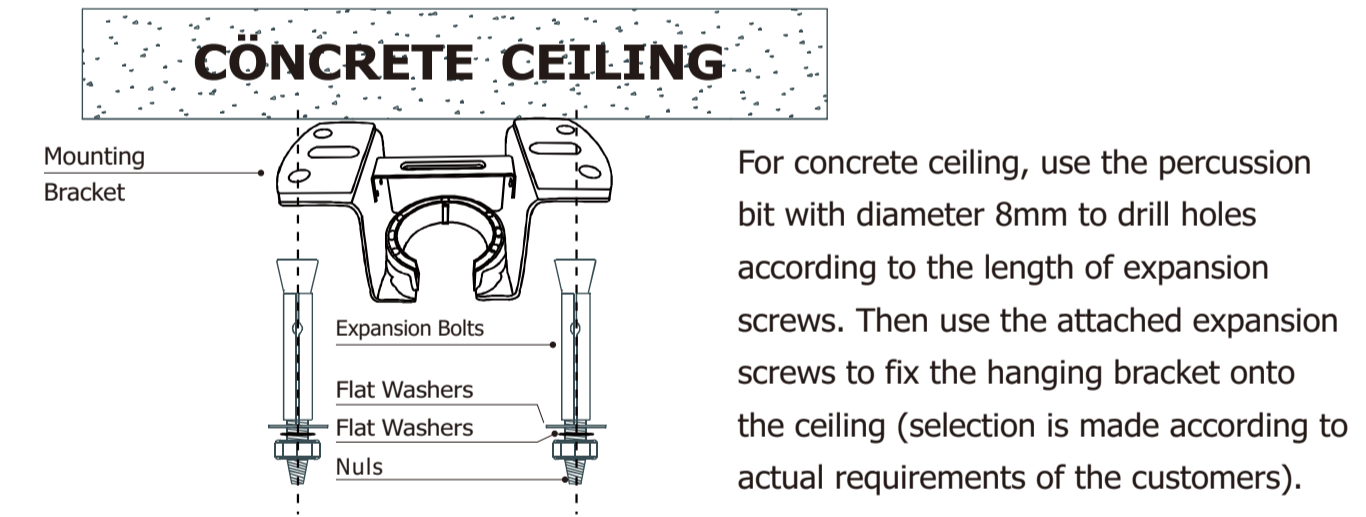
Fastening the blade arms to the motor



Assembly-Attaching the Lights

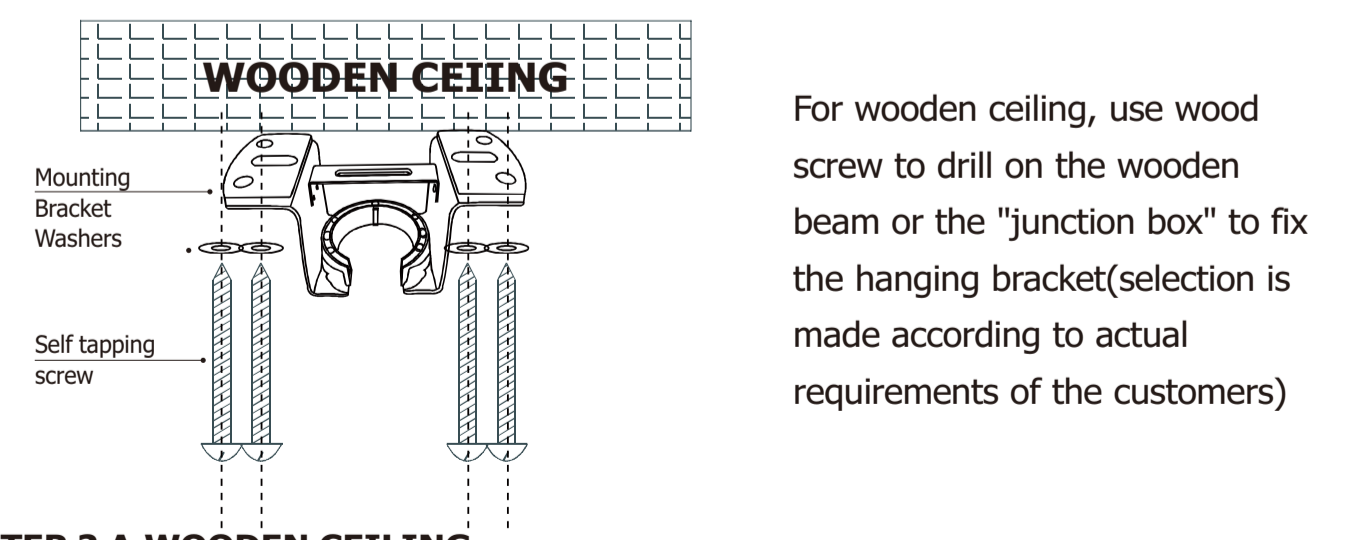


Installation of the hanging bracket



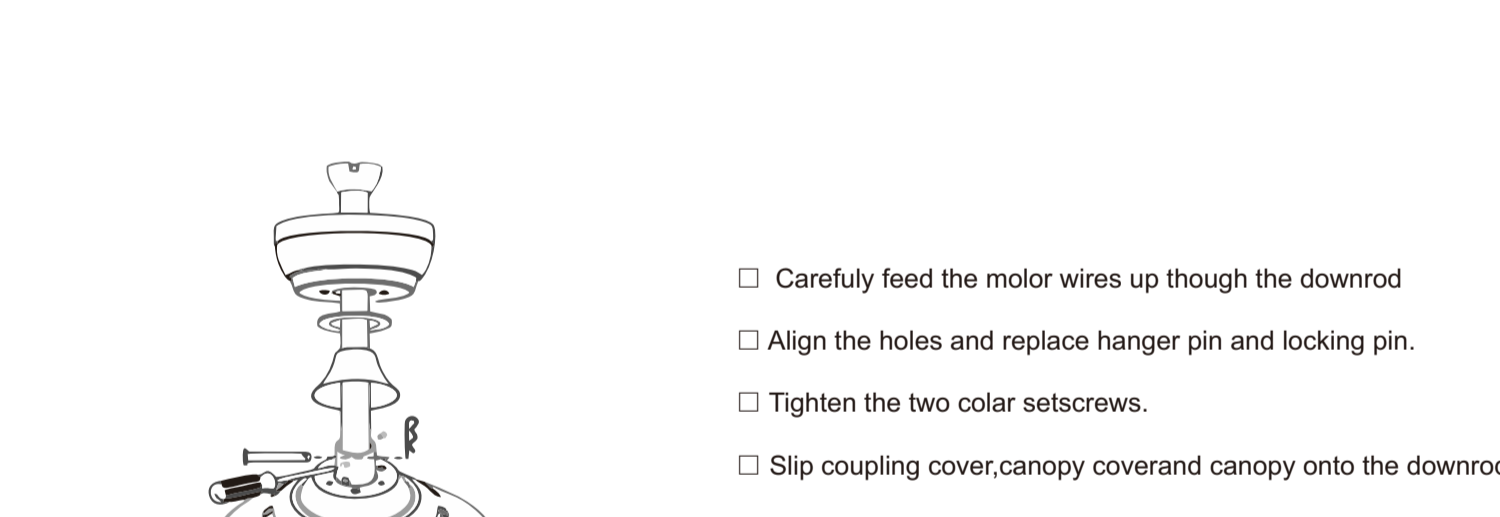
STEP 1 A-CONCRETE CEILING
SWITCH OFF THE ELECTRICAL MAINS AT THE CIRCUIT BREAKER FUSE BOX.
1) Use the Mounting Bracket as a guide, mark the spots where the 4 Expansion Bolts will be drilled.
2) Remove the Mounting Bracket, drill 2 holes and insert 2 Expansion Bolts into the concrete ceiling, install the mounting bracket and secure with Flat Washers, Spring Washers and Nuts.

IMPORTANT: SCREWS & NUTS MUST BE TIGHTENED TILL SNUG

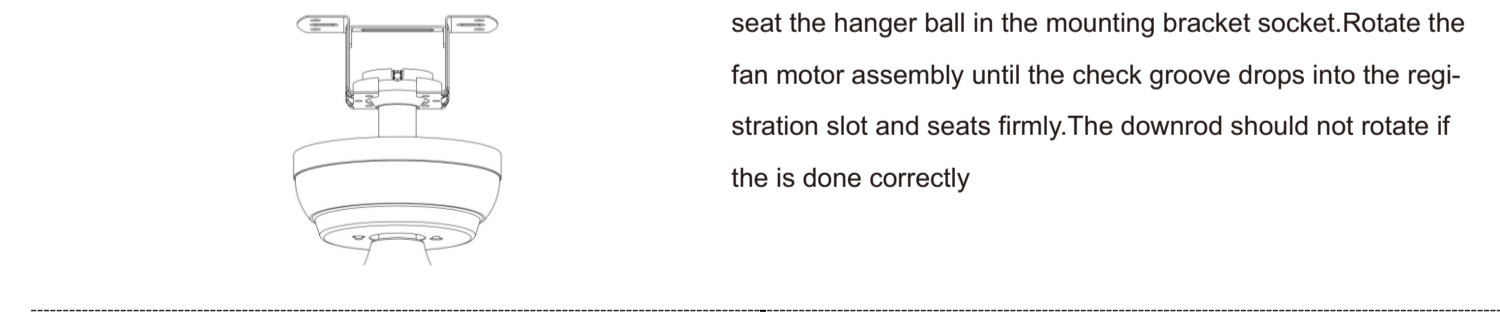


STEP 2 A-WOODEN CEILING
SWITCH OFF THE ELECTRICAL MAINS AT THE CIRCUIT BREAKER FUSE BOX.
1) Use the Mounting Bracket as a guide, mark the spots where the 4 Self Tapping Screws will be drilled.
2) Remove the Mounting Bracket, drill 4 holes for 3MM diameter, install the mounting bracket onto wooden ceiling with the 4 Self Tapping Screws & Washers

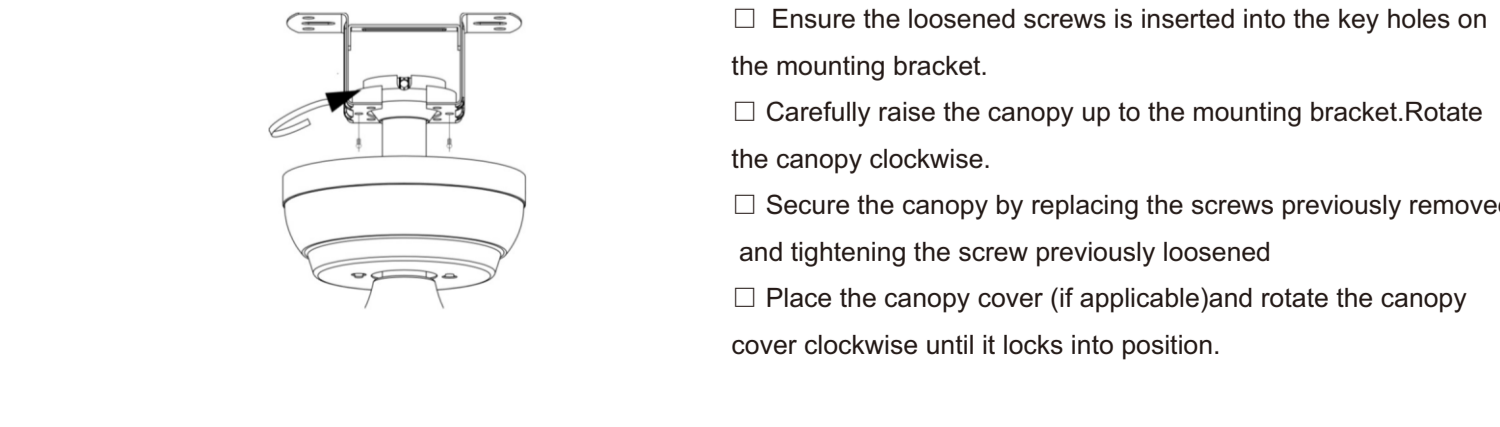
Install downrod assembly



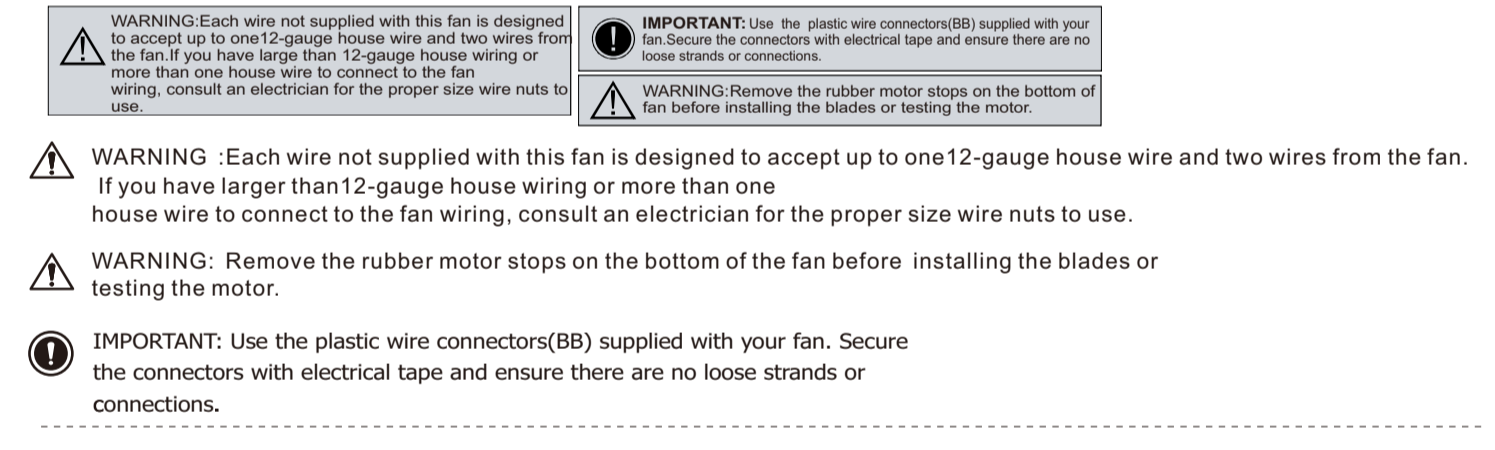
Hang the fan



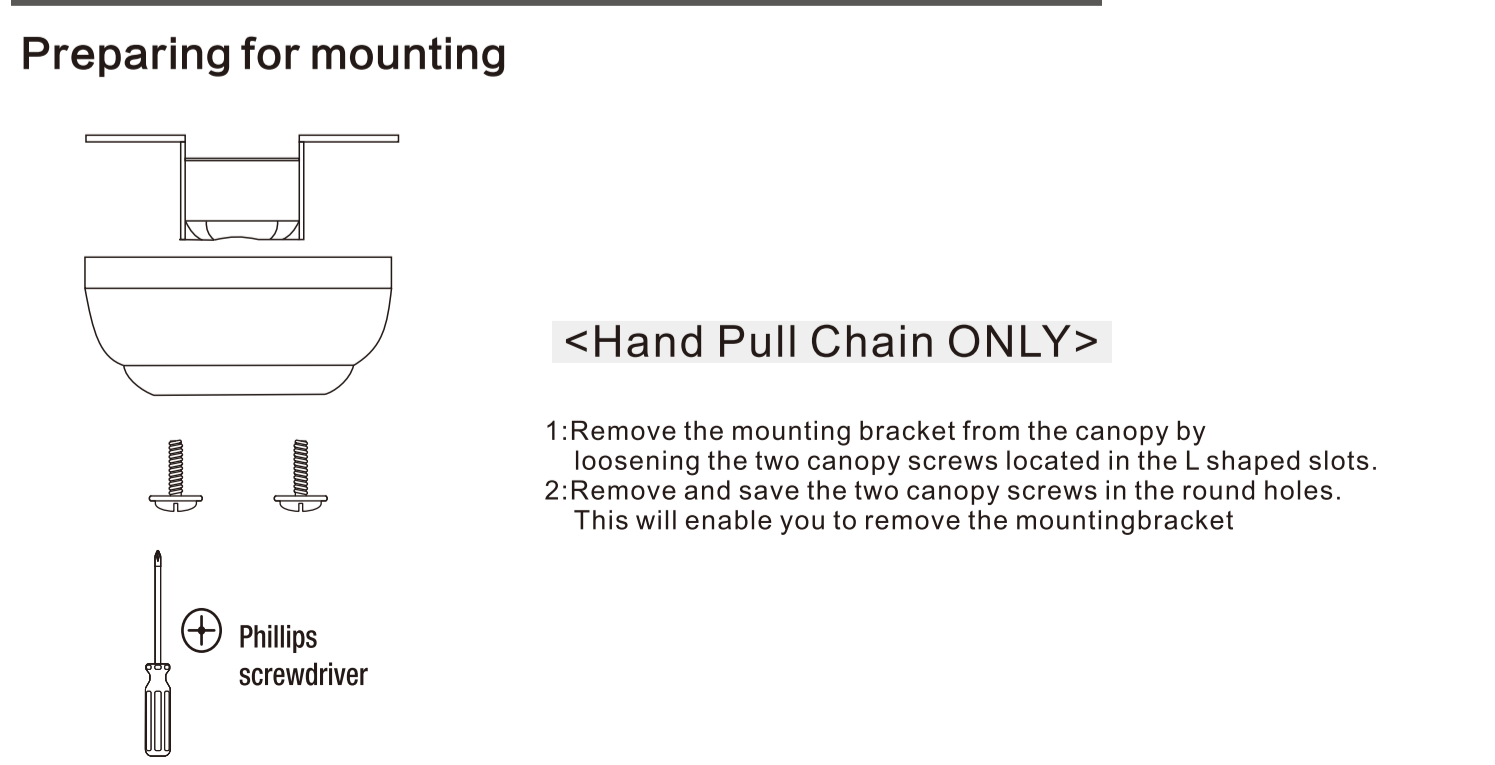
Install canopy



Making the electrical connections



Assembly - Hanging the Fan (continued)



Use of hand pull chain

