



Report No.: MTL24041000309R06

# TEST REPORT

Prepared for :

Chizhou JC Children Products Co., Ltd  
Matang industrial zone, Dingqiao town, Qingyang district, Chizhou city, Anhui  
province

Product name: Electric Ride-on Car  
Brand Name: N/A  
Product model: JC603 ,JC604  
Date of Test: Apr. 10, 2024 to Apr. 24, 2024  
Date of Report: Apr. 24, 2024  
Report Number: MTL24041000309R06

Prepared By :

Shenzhen MTL Testing Technology Co., Ltd.  
6/F., BUILDING 4, NO.22, DAWANGSHAN SECOND INDUSTRIAL ZONE,  
SHAJING SUBDISTRICT, BAO'AN DISTRICT  
3/F, BUILDING A, SHENGHENGJI INDUSTRIAL PARK, NO.137, FUYUAN 1ST  
ROAD, HEPING COMMUNITY, FUHAI SUBDISTRICT, BAOAN DISTRICT  
SHENZHEN, GUANGDONG CHINA





**\*\* Modified History \*\***

Revision	Description	Issued Data	Remark
Revision 1.0	Initial Test Report Release		

\*\*\*\*\*



Test Requested		Conclusion
A	As specified in title 16, code of federal regulations, chapter II - consumer products safety commission of U.S.A	
	1. 16 CFR 1500.50.51.52.53 Simulating use and abuse of toys	Pass
	2. 16 CFR 1501 Small Objects	Pass
	3. 16 CFR 1500.48 Sharp point	Pass
	4. 16 CFR 1500.49 Sharp edge	Pass
	5. 16 CFR 1500.44 Flammability test on solid	Pass
B	CPSIA section 101(a)(2)-Lead in accessible substrate materials and 15 U.S.C. § 1278a Lead in Children's products	Pass
C	Consumer Product Safety Commission 16 CFR Ch.II Part 1303 - Ban of Lead in paint and similar surface coating	Pass
D	on sale of certain products containing specified phthalates USA 16 CFR Part 1307 Prohibition of Children's Toys and Child Care Articles Containing Specified Phthalates	Pass
E	ASTM F963-23 Standard Consumer Safety Specification for Toy Safety	Pass
	1-. ASTM F963-23: Mechanical and Physical Tests	Pass
	2-. ASTM F963-23: Flammability Tests	Pass
	3-. ASTM F963-23: 4.3.5 Toxic Elements Test	Pass
	3.1. Soluble Heavy Metals Content in paint and similar surface coating material :ASTM F963-23 Section 4.3.5.1(2)	Pass
	3.2. Total Lead Content in paint and similar surface coating material: ASTM F963-23 Section 4.3.5.1(1)	Pass
	3.3. Soluble Heavy Metals Content in Toy Substrate Materials: ASTM F963-23 Section 4.3.5.2(2)(b)	Pass
	3.4. Total Lead Content in Toy Substrate Materials: ASTM F963-23 Section 4.3.5.2(2)(a)	Pass
	3.5. Soluble cadmium Content in Toy Substrate Materials: ASTM F963-23 Section 4.3.5.2(2)(d)	Pass
	3.6. Phthalates Content in Toys (including pacifiers, rattles, and teethers): ASTM F963-23 Section 4.3.8	Pass
F	CPSIA Section 103 Tracking Labels for Children's Products	Pass

\*\*\*\*\*



**Results:**

**A. As specified in title 16, code of federal regulations, chapter II - consumer products safety commission of U.S.A**

Clause	Description	Result
16 CFR 1500.50.51.52.53	Normal use testing	Pass
	Abuse testing	
	Impact test (53b)	Pass
	Bite test	N/A
	Flexure test	N/A
	Torque test(53e)	Pass
	Tension test(53f)	Pass
	Compression test(53g)	Pass
16 CFR 1501	Identifying toys and other articles intended for use by children under 3 years of age which present choking, aspiration, or ingestion hazards because of small parts.	N/A
16 CFR 1500.48	Technical requirements for determining a sharp point in toys and other articles intended for use by children 3+ years of age.	Pass
16 CFR 1500.49	Technical requirements for determining a sharp metal or glass edge in toys and other articles intended for use by children 3+ years of age.	Pass
16 CFR 1500.44	Flammability test on solid	Pass

-- N/A = Not Applicable

\*\*\*\*\*



Tested part(s):

1	Black plastic	4	Red plastic	7	White plastic
2	Black cloth	5	Red plastic	8	Transparent plastic
3	Black plastic	6	Black plastic	3	White plastic

**B. US Consumer Products Safety Improvement Act of 2008(H.R. 4040) title 1, section 101 for total lead content**

**Test method:** With reference to CPSC-CH-E1001-08.3 & CPSC-CH-E1002-08.3 and 15 U.S.C. § 1278a by acid digestion and analysis was performed by inductively coupled plasma atomic emission spectrometer (ICP-OES)

**Total Lead Content.**

Item	Unit	MDL	Results			Limit
			1+2+3			
Lead Content (Pb)	mg/kg	2	N.D.			100
<b>Conclusion</b>	/	/	<b>Pass</b>			/

**C. Consumer Product Safety Commission 16 CFR Ch.II Part 1303 - Ban of Lead in paint and similar surface coating**

Test method:

Lead in paint and other similar surface coatings: With reference to CPSC-CH-E1003-09.1, sample was digested with acid mixture and analyzed by inductively coupled plasma atomic emission spectrometer (ICP-OES)

**Total Lead Content in Paint/Similar Surface Coating Materials.**

Item	Unit	MDL	Results			Limit
			1+2+3			
Lead Content (Pb)	mg/kg	2	N.D.			90
<b>Conclusion</b>	/	/	<b>Pass</b>			/

\*\*\*\*\*



**D.USA Consumer Product Safety Improvement Act (CPSIA) Sec.108 Prohibition on sale of certain products containing specified phthalates**  
**USA 16 CFR Part 1307 Prohibition of children's Toys and Child Care Articles Containing Specified Phthalates**

**Test method:** With reference to CPSC-CH-C1001-09.4, by solvent extraction and analysis was performed by gas chromatographic-mass spectrometer (GC-MS).

Item	Unit	MDL	Results			Limit
			1+2+3			
Dibutyl Phthalate (DBP)	mg/kg	30	N.D.			1000
Benzyl butyl Phthalate (BBP)	mg/kg	30	N.D.			1000
Bis-(2-ethylhexyl)Phthalate(DEHP)	mg/kg	30	N.D.			1000
Dihexyl Phthalate (DNHP)	mg/kg	30	N.D.			1000
Diisononyl Phthalate (DINP)	mg/kg	30	N.D.			1000
Dipentyl Phthalate (DPP)	mg/kg	30	N.D.			1000
Dicycphexyl Phthalate (DCHP)	mg/kg	30	N.D.			1000
Diisobutyl Phthalate (DIBP)	mg/kg	30	N.D.			1000
<b>Conclusion</b>	/	/	<b>Pass</b>			/

**Note:**

- N.D.=Not Detected or less than MDL.
- MDL=Method Detection Limit.
- N/A= Not Applicable
- %=Percentage by weight.
- 0.1%=1000mg/kg,mg/kg=ppm.
- "+"=The test result is obtained from composite testing on materials linked with "+" mark, it is possible that individual test result can be higher if materials are tested separately. This had beentaken in account in the conclusion of this report.

\*\*\*\*\*

**E. ASTM F963-23:****E.1. Safety aspects related to Mechanical and physical properties**

Section	Test Item	Result
4	Safety Requirements	
4.1	Material Quality	Pass
4.3.7	Stuffing Materials.	N/A
4.4	Electrical/Thermal Energy	N/A
4.5	Sound-producing Toys	N/A
4.6	Small Objects	
4.6.1	Toys that are intended for children under 36 months of age	N/A
4.6.2	Mouth-Actuated Toys	N/A
4.6.3	Toys and games that are intended for use by children who are at least three years old but less than six years of age	N/A
4.7	Accessible Edges	Pass
4.8	Projections	N/A
4.9	Accessible Points	Pass
4.10	Wires or Rods	N/A
4.11	Nails and Fasteners	N/A
4.12	Plastic Film	N/A
4.13	Folding Mechanisms and Hinges	N/A
4.14	Cords, Straps, and Elastics	N/A
4.15	Stability and Over-Load Requirements	N/A
4.16	Confined Spaces	N/A
4.17	Wheels, Tires and Axles	N/A
4.18	Holes, Clearance and Accessibility of Mechanisms	N/A
4.19	Simulated Protective Devices	N/A
4.20	Pacifiers	N/A
4.21	Projectile Toys	N/A
4.22	Teethers and Teething Toys	N/A
4.23	Rattles	N/A
4.24	Squeeze Toys	N/A
4.25	Battery-Operated Toys	N/A





Section	Test Item	Result
4.26	Toys Intended to be Attached to a Crib or Playpen	N/A
4.27	Stuffed and Beanbag-Type Toys	N/A
4.28	Stroller and Carriage Toys	N/A
4.29	Art Materials	N/A
4.30	Toy Gun Marking	N/A
4.31	Balloons	N/A
4.32	Certain Toys with Nearly Spherical Ends	N/A
4.33	Marbles	N/A
4.34	Balls	N/A
4.35	Pompoms	N/A
4.36	Hemispheric-Shaped Objects	N/A
4.37	Yo-Yo Elastic Tether Toys	N/A
4.38	Magnets	N/A
4.39	Jaw Entrapment in Handles and Steering Wheels	N/A
4.40	Expanding Materials	N/A
4.41	Toy Chests	N/A
5.	Labeling Requirements	
5.1	Federal Government Requirements	N/A
5.2	Age Grading Labeling	Pass
5.3	Safety Labeling Requirements	Pass
5.4	Aquatic Toys	N/A
5.5	Crib and Playpen Toys	N/A
5.6	Mobiles	N/A
5.7	Stroller and Carriage Toys	N/A
5.8	Toys Intended to be Assembled by an Adult	N/A
5.9	Simulated Protective Devices	N/A
5.10	Toys with Functional Sharp Edges or Points	N/A
5.11	Small Objects, Small Balls, Marbles and Balloons	N/A
5.12	Toy Caps	N/A
5.13	Art Materials	N/A
5.14	Electric Toys	N/A



Section	Test Item	Result
5.15	Battery-Operated Toys	N/A
5.16	Promotional Materials	N/A
5.17	Magnets	N/A
6.	Instructional Literature	
6.1	Definition and Description	N/A
6.2	Crib and Playpen Toys	N/A
6.3	Mobiles	N/A
6.4	Toys Intended to be Assembled by an Adult	N/A
6.5	Battery-Operated Toys	N/A
6.6	Battery Powered Ride-on Toys	N/A
6.7	Toys in Contact with Food	N/A
6.8	Toy Chests	N/A
7.	Producer's Markings	
7.1	Producer's Markings	Pass
7.2	Battery-Powered Ride-on Toys	N/A
7.3	Toy Chests	N/A
8.	Test Method	
8.5	Normal Use Testing	Pass
8.5.1	Washable Toys	N/A
8.7	Impact Test	Pass
8.8	Torque Test	Pass
8.9	Tension Test	Pass
8.10	Compression Test	N/A
8.12	Flexure Test	N/A
8.16	Tension Test for Pompoms	N/A

Note:

- N/A =Not Application
- N/C=Not Conducted as per client's request

\*\*\*\*\*



## E.2. Flammability

### Flammability test on Solid

Ref.: ASTM F963-23 Section 4.2

Method used: Federal Hazardous Substances Act FHSA 16 CFR 1500.44

<u>Sample</u>	<u>Burn rate (inch/sec.)*</u>	<u>Result</u>
Electric Ride-on Car	DNI	Pass

Note: In accordance with the ASTM F963, the burning rate should not be greater than 0.1 inch per second.

\*Burning rate has been rounded to the nearest one tenth of an inch per second.

DNI = Did Not Ignited

SE = Self-Extinguished

IBE = Ignite But Extinguished



**E.3.1. Soluble Heavy Metals Content in paint and similar surface coating material :**

**ASTM F963-23 Section 4.3.5.1(2)**

Test method: With reference to ASTM F963-23 8.3, Analysis was performed by Inductively Coupled

Plasma-Optical Emission Spectrometer (ICP-OES).

Test Items	Unit	MDL	Results			Limit
			1+2+3	4+5+6	7+8+9	
Soluble Lead (Pb)	mg/kg	5	N.D.	N.D.	N.D.	90
Soluble Antimony (Sb)	mg/kg	5	N.D.	N.D.	N.D.	60
Soluble Arsenic (As)	mg/kg	5	N.D.	N.D.	N.D.	25
Soluble Barium (Ba)	mg/kg	5	N.D.	N.D.	N.D.	1000
Soluble Cadmium (Cd)	mg/kg	5	N.D.	N.D.	N.D.	75
Soluble Chromium (Cr)	mg/kg	5	N.D.	N.D.	N.D.	60
Soluble Mercury (Hg)	mg/kg	5	N.D.	N.D.	N.D.	60
Soluble Selenium (Se)	mg/kg	5	N.D.	N.D.	N.D.	500
<b>Conclusion</b>	--	--	<b>Pass</b>	<b>Pass</b>	<b>Pass</b>	--

Note:

- N.D. = Not Detected or less than MDL
- MDL = Method Detection Limit
- 0.1% = 1000mg/kg, mg/kg = ppm
- N/A =Not Application
- \*= The mass is less than 10 mg, no test is needed

**E.3.2. Total Lead Content in paint and similar surface coating material:**

**ASTM F963-23 Section 4.3.5.1(1)**

Test method: With reference to ASTM F963-23 8.3 , Analysis was performed by Inductively Coupled Plasma-Optical Emission Spectrometer (ICP-OES).

Test Item	Unit	Result			MDL	Limit
		1+2+3	4+5+6	7+8+9		
Lead (Pb)	mg/kg	N.D.	N.D.	N.D.	10	90
<b>Conclusion</b>	--	<b>Pass</b>	<b>Pass</b>	<b>Pass</b>	--	--

Note:

- N.D. = Not Detected or less than MDL
- MDL = Method Detection Limit
- 0.1% = 1000mg/kg, mg/kg = ppm
- N/A =Not Application

**E.3.3. Soluble Heavy Metals Content in Toy Substrate Materials:****ASTM F963-23 Section 4.3.5.2(2)(b)**

Test method: With reference to ASTM F963-23 8.3, Analysis was performed by Inductively Coupled Plasma-Optical Emission Spectrometer (ICP-OES).

Test Items	Unit	MDL	Results			Limit
			1+2+3	4+5+6	7+8+9	
Soluble Lead (Pb)	mg/kg	5	N.D.	N.D.	N.D.	90
Soluble Antimony (Sb)	mg/kg	5	N.D.	N.D.	N.D.	60
Soluble Arsenic (As)	mg/kg	5	N.D.	N.D.	N.D.	25
Soluble Barium (Ba)	mg/kg	5	N.D.	N.D.	N.D.	1000
Soluble Cadmium (Cd)	mg/kg	5	N.D.	N.D.	N.D.	75
Soluble Chromium (Cr)	mg/kg	5	N.D.	N.D.	N.D.	60
Soluble Mercury (Hg)	mg/kg	5	N.D.	N.D.	N.D.	60
Soluble Selenium (Se)	mg/kg	5	N.D.	N.D.	N.D.	500
<b>Conclusion</b>	--	--	<b>Pass</b>	<b>Pass</b>	<b>Pass</b>	--

Note:

- N.D. = Not Detected or less than MDL
- MDL = Method Detection Limit
- 0.1% = 1000mg/kg, mg/kg = ppm

**E.3.4. Total Lead Content in Toy Substrate Materials: ASTM F963-23 Section 4.3.5.2(2)(a)**

Test method: With reference to ASTM F963-23 8.3, Analysis was performed by Inductively Coupled Plasma-Optical Emission Spectrometer (ICP-OES).

Test Item	Unit	Result			MDL	Limit
		1+2+3	4+5+6	7+8+9		
Lead (Pb)	mg/kg	N.D.	N.D.	N.D.	10	100
<b>Conclusion</b>	--	<b>Pass</b>	<b>Pass</b>	<b>Pass</b>	--	--

Note:

- N.D. = Not Detected or less than MDL
- MDL = Method Detection Limit
- 0.1% = 1000mg/kg, mg/kg = ppm

**E.3.5. Soluble cadmium Content in Toy Substrate Materials:****ASTM F963-23 Section 4.3.5.2(2)(d)**

Test method: With reference to ASTM F963-23 8.3.5.5(3), Analysis was performed by Inductively Coupled Plasma-Optical Emission Spectrometer (ICP-OES).

Test Item	Unit	Result			MDL	Limit
		1+2+3	4+5+6	7+8+9		
Cadmium (Cd)	mg/kg	N.D.	N.D.	N.D.	20	200
<b>Conclusion</b>	--	<b>Pass</b>	<b>Pass</b>	<b>Pass</b>	--	--

**Note:**

- N.D. = Not Detected or less than MDL
- MDL = Method Detection Limit
- 0.1% = 1000mg/kg, mg/kg = ppm



**E.3.6. Phthalates Content in Toys (including pacifiers, rattles, and teethers):**

**ASTM F963-23 Section 4.3.8**

Test Method: With reference to CPSC-CH-C1001-09.4, analysis was performed by Gas Chromatograph-Mass Spectrometer (GC-MS).

Test Item	CAS No.	Unit	Result			MDL	Limit
			1+2+3	4+5+6	7+8+9		
Di-(2-ethylhexyl) phthalate (DEHP)	117-81-7	%(w/w)	N.D.	N.D.	N.D.	0.005	0.1
Di-butyl phthalate (DBP)	84-74-2	%(w/w)	N.D.	N.D.	N.D.	0.005	0.1
Butyl benzyl phthalate (BBP)	85-68-7	%(w/w)	N.D.	N.D.	N.D.	0.005	0.1
Di-isononyl phthalate (DINP)	28553-12-0	%(w/w)	N.D.	N.D.	N.D.	0.010	0.1
Di-n-pentyl phthalate(DPENP)	131-18-0	%(w/w)	N.D.	N.D.	N.D.	0.010	0.1
Di-n-hexyl phthalate(DHEXP)	84-75-3	%(w/w)	N.D.	N.D.	N.D.	0.005	0.1
Di-isobutyl phthalate(DIBP)	84-69-5	%(w/w)	N.D.	N.D.	N.D.	0.005	0.1
Dicyclohexyl phthalate(DCHP)	84-61-7	%(w/w)	N.D.	N.D.	N.D.	0.005	0.1
<b>Conclusion</b>	--	--	<b>Pass</b>	<b>Pass</b>	<b>Pass</b>	--	--

Note:

- N.D. = Not Detected or less than MDL
- MDL = Method Detection Limit
- 0.1% = 1000mg/kg, mg/kg = ppm

\*\*\*\*\*



**F. CPSIA Section 103 - Tracking Labels for Children’s Products**

<u>Description</u>	<u>Result</u>
a) Is the product intended for children under 12 years? If no, the section is not applicable.	Yes
b) Is the product under the exemption of marking on children’s product?	Not
1.Product is too small to be marked.	Not
2.Products stay with or be contained in their original packaging.	Not
3.Product is sold through a bulk vending machine.	Not
4.Physical mark would weaken or damage the product or impair its utility.	Not
5.Product surface would be impossible to mark permanently.	Not
6.Aesthetics of the product would be ruined by a mark.	Not
c) Is the product and packaging or only packaging (for product exempted from the marking) marked below information?	Pass
Name of the manufacturer or the name of the private labeler.	Yes
Manufacturer or private labeler location, including the name of the country, and the name or other means of coding of city and state.	Yes
3) Date of production of the product, in a form of MM/YY or any other coding system.	Yes
4) Cohort information (including the batch, run number, or another identifying characteristic).	Yes
d) Is the label permanent after below permanency testing?	Pass

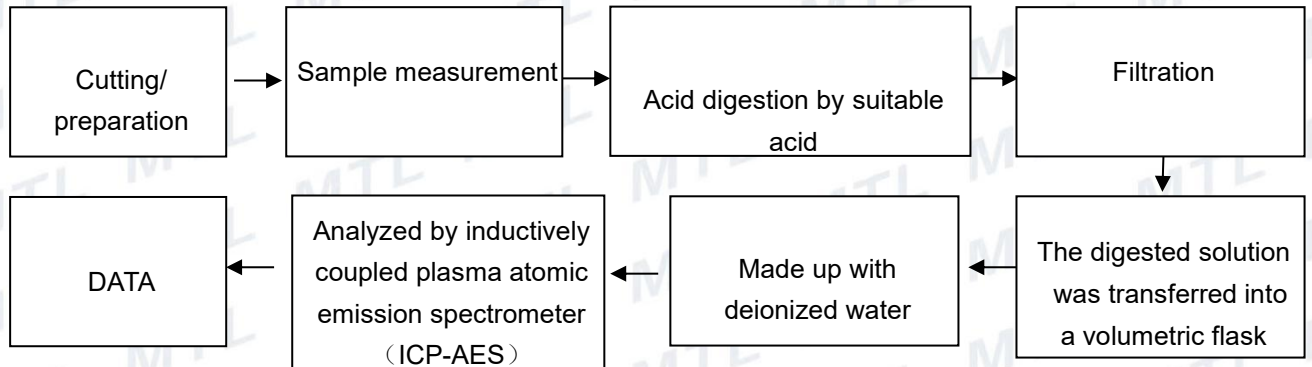
\*\*\*\*\*



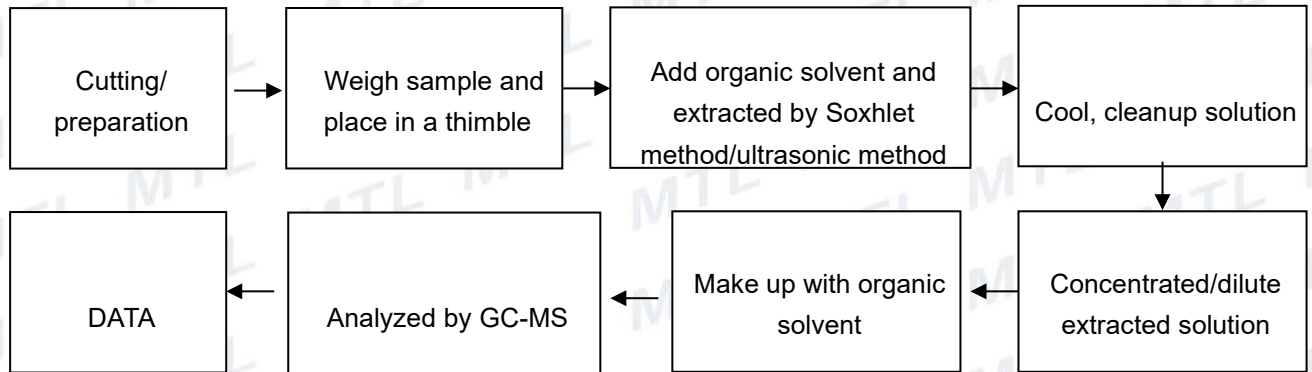


### Appendix

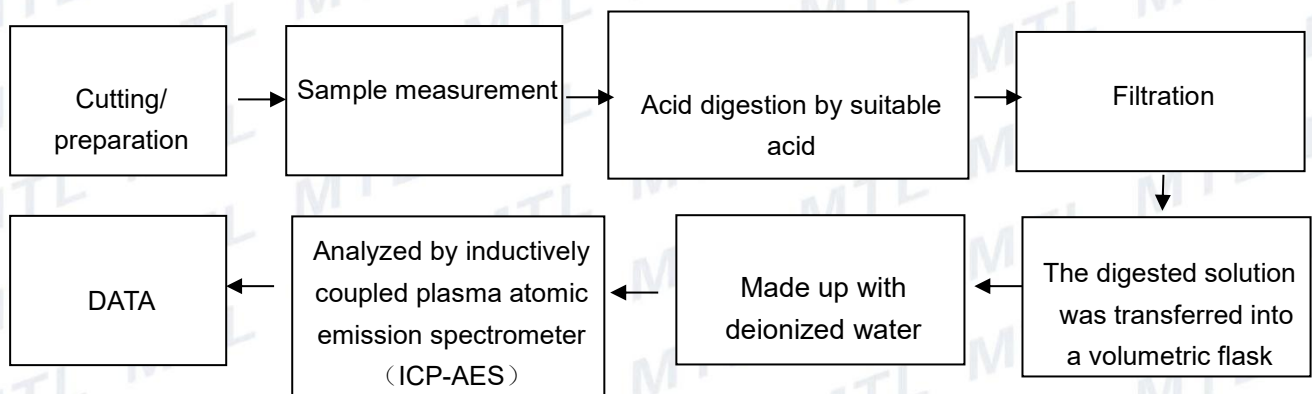
#### A. Test flow chart for Total Lead Content:



#### B. Test flow chart for Phthalates content:



#### C. Test flow chart for Lead, Antimony, Arsenic, Barium, Cadmium, Chromium, Mercury and Selenium content :



\*\*\*\*\*

Photograph of Sample



FIGURE 1



FIGURE 2



FIGURE 3

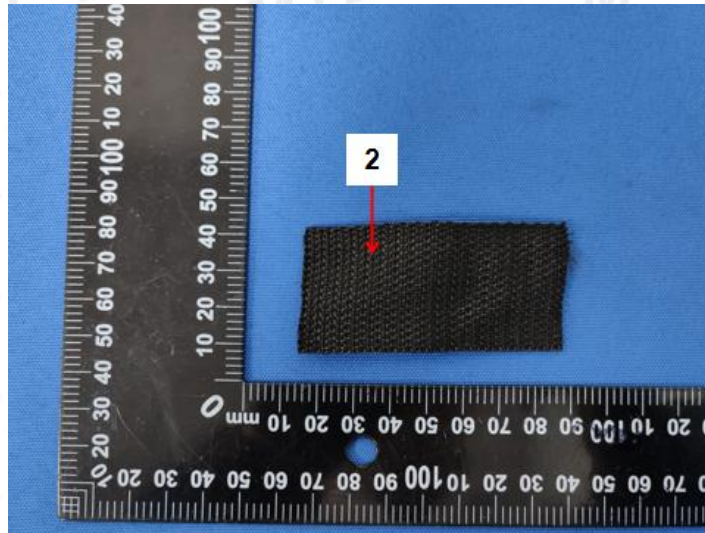


FIGURE 4



FIGURE 5

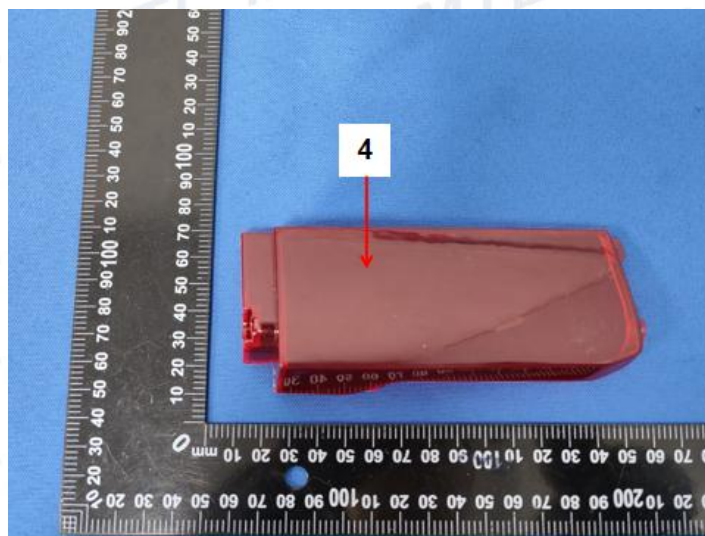


FIGURE 6

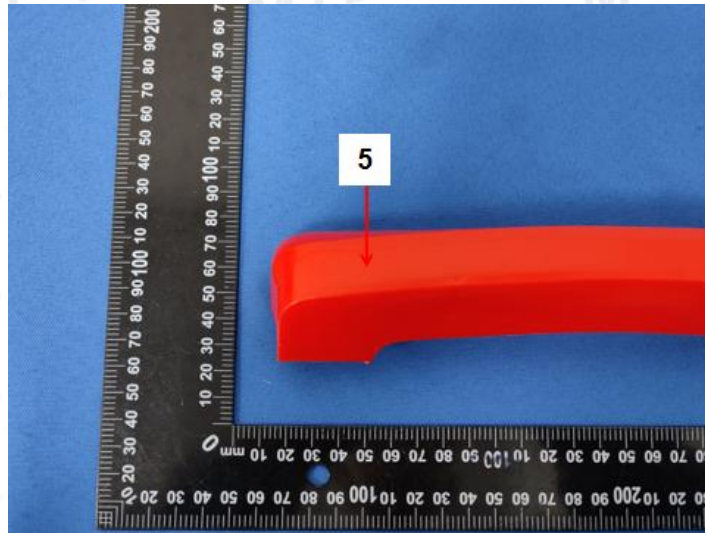


FIGURE 5

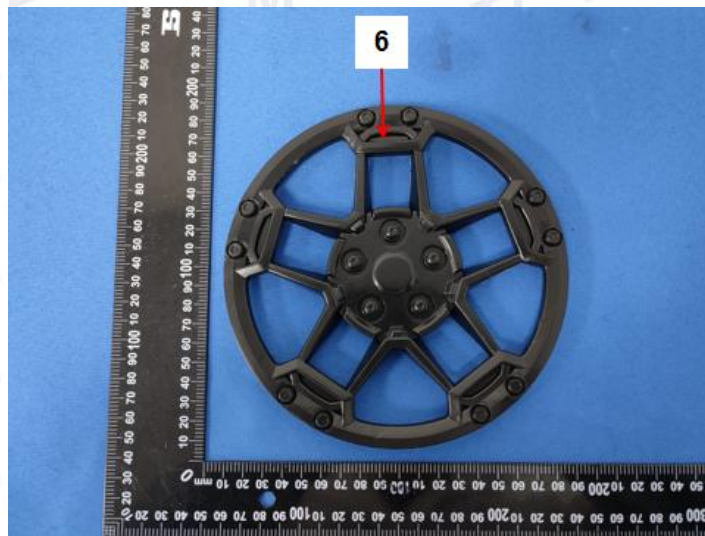


FIGURE 6

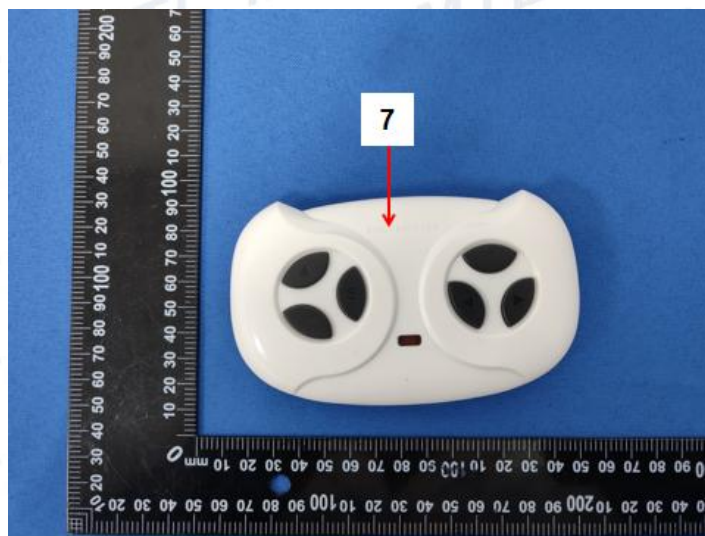


FIGURE 7

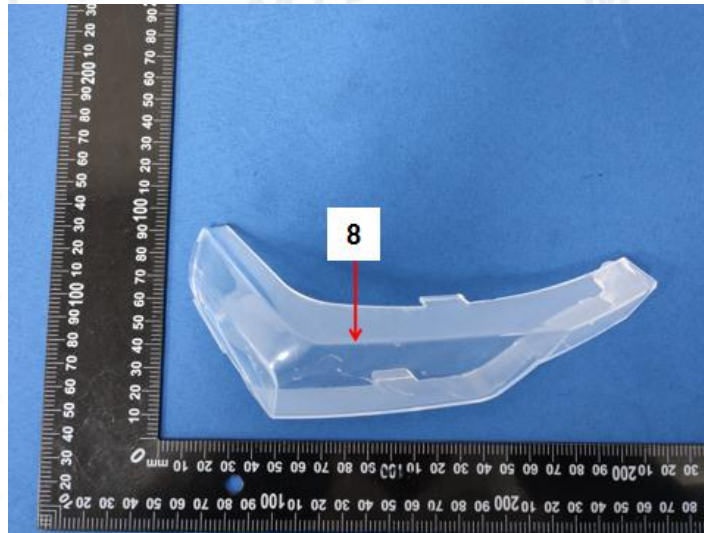


FIGURE 10

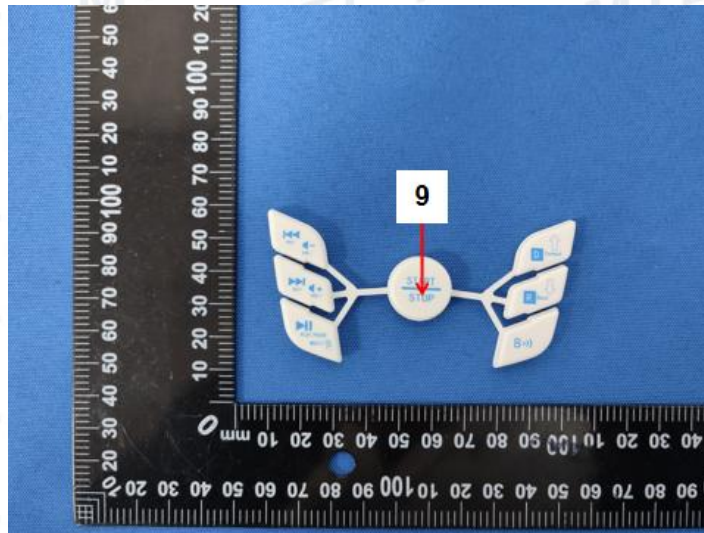


FIGURE 11

Product Name:	Electric Ride-on Car
Applicant:	Chizhou JC Children Products Co., Ltd
Applicant Address:	Matang industrial zone, Dingqiao town, Qingyang district, Chizhou city, Anhui province
Manufacturer:	Chizhou JC Children Products Co., Ltd
Manufacturer Address:	Matang industrial zone, Dingqiao town, Qingyang district, Chizhou city, Anhui province
Age of application:	Over 3 years old
Batch:	20231205A
Date of manufacture:	2023/12/05

MADE IN CHINA

**⚠ WARNING:**

CHOKING HAZARD—small parts.

Not for children under 3 years.

FIGURE 12

MTL authenticate the photo on original report only

\*\*\*End of Report\*\*\*



Statement:

1. The test report is considered invalidated without approval signature, special seal on the perforation.
2. The result(s) shown in this report refer only to the sample(s) tested.
3. Without written approval of MTL, this report can't be reproduced except in full.
4. The sample(s) and sample information was/were provided by the client who should be responsible for the authenticity which MTL hasn't verified.
5. In case of any discrepancy between the English version and Chinese version of the testing reports (if generated), the Chinese version shall prevail.