

# Instruction Manual

SAMART Custom Care Center:

Please message on what's app or call, from 10am to 6pm (except Sundays and holidays)

For complaints, service, assembling, problems and other requirements.

•863197880999 •8618830985550

Note: please send pictures of the product with details of the Issue, together with purchase details.

Email: 54968595@qq.com

Address: #888 Hegumiao Bicycle Industrial Park, Pingxiang County, Xingtai 054500, Hebei, China.

## Ride-on of the Huracán STO



Product should be assembled by adults. Please keep this manual and read it carefully before use.

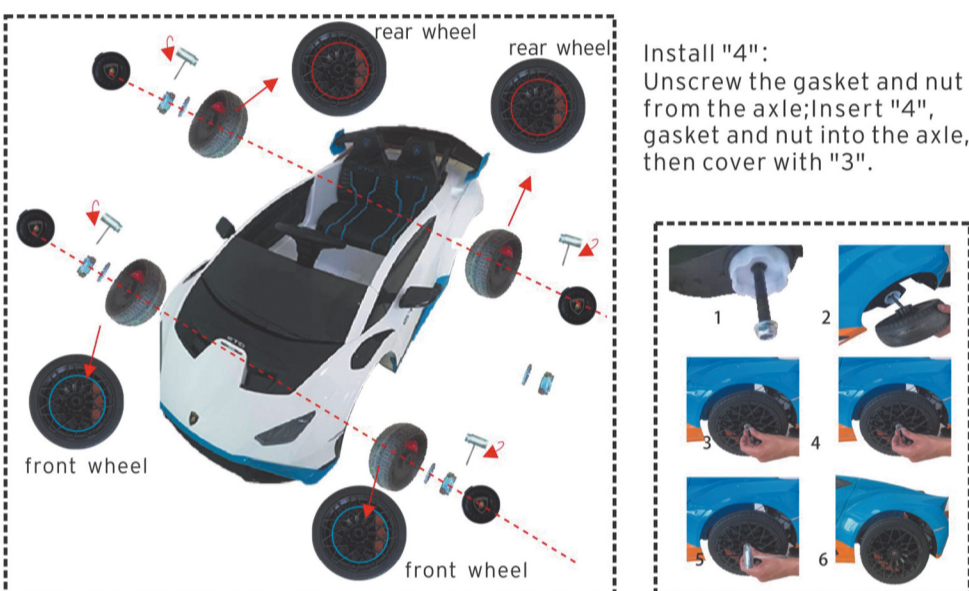


The "Lamborghini" and "Lamborghini Bull and Shield" trademarks, copyrights, designs and models are used under license from Automobili Lamborghini S.p.A. Italy. Licensed manufacturer: Hebei Samart Children Toys Co., Ltd.

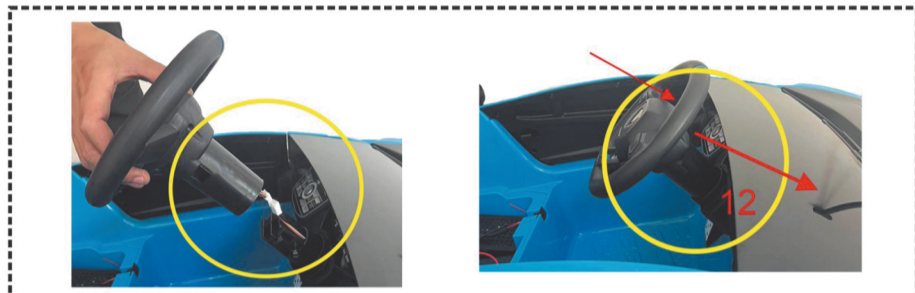
## Accessories



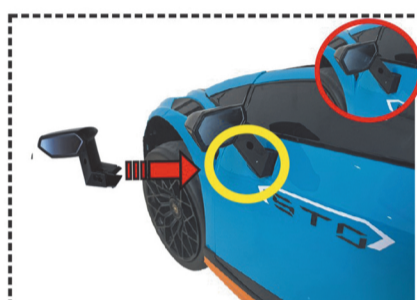
## Installation steps



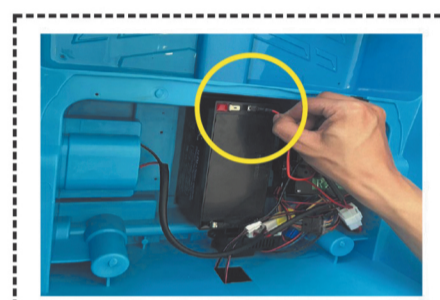
01



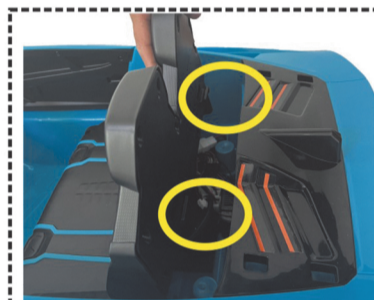
Install "1": connect steering wheel to column, lining up connectors "1" to "11", push the connectors into 11 slowly. "12" is buckle for fixing the steering wheel.



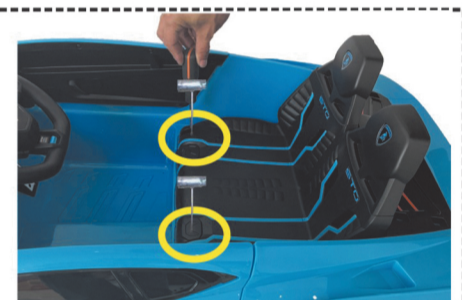
Install "2": line up "2" with the holes on both sides of the car and press down.



Connect the power: Detach the white plastic from the red terminal and connect the red wire to the red terminal.



Install "10": Position the seat and secure "5" with "6".



Install "9": Position "9" over the hole in the body and press down.



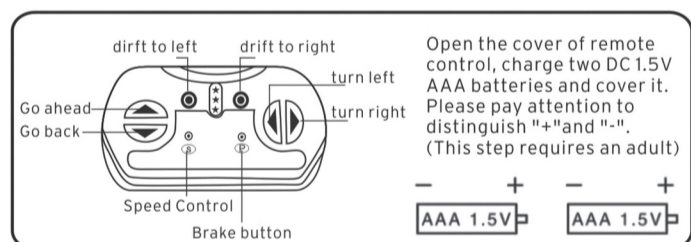
02

## Specifications

SPEC

ITEM	SMT-555		
CAR SIZE	117*70*45CM		
MATERIALS	PP		
BATTERY	12V7AH	12V9AH	24V4.5AH
MOTOR	12V30W*3	12V30W*1/120W*2	24V30W*1 /200W*2
CHARGER	12V1000MA	12V1500MA	24V1A
BATTERY FOR R/C	2*DC1.5VAAA		
BATTERY FOR R/C	AAA BATTERY*2		
USING TIME	50-55MIN		

REMARK: Battery, motor, charger is optional, please check according to the parameters you choose.



Connection: Option 1: Turn on the car when the remote control light is on. The light flashes, everything is okay.

Option 2: Press forward and backward buttons at the same time; turn on the car, and the light flashes to confirm "ok".

- Reminder: This remote control can be used without code, please establish a connection first if you want to pair with the car one to one.
- The speed button: Three-speed control.
- Indicator light: One is low speed, two is medium speed, three is maximum speed. The lights flash when the brake button is pressed.

Warning: Small parts-Not suitable for children under 36 months.

- Non-rechargeable batteries don't have to be recharged.
- Different types of batteries or new and used batteries don't have to be mixed.
- Batteries must be inserted with the correct polarity.
- Exhausted batteries must be removed from the remote control.
- The power terminals must not be short-circuited.
- The packaging must be retained since it contains important information.

The left and right button on the steering wheel can drift, the other button is speaker.

03

## SAFE WARNING

For the safety of your children, tell your children and their friends and make sure they understand these rules!

Make sure to use the vehicle in safe places, such as home, garden and playground.

Drive the vehicle on the smooth floor to ensure the safety of the child; Please do not drive the vehicle in

- Dangerous areas, such as those shown below:
  - Ditches or hollows, river, grass ground, slopes and other unsmooth surfaces;
- Road, highway or other way of transportation;
- Near obstacles that can be hit and cause injury;
- Other dangerous places.

Children should never drive the vehicle in dark or low light areas that may increase the risk of obstacles and accidents. Use the vehicle only in bright, daylight areas.

Never use it with rain or snow.

Make sure the user's age is suitable for our product and doesn't exceed the maximum weight.

This vehicle is suitable for ages 37 to 96 months and the maximum capacity is 30kgs.

Warning: Please keep other children away from the moving vehicle and never let children touch the moving wheels. This product is equipped with a seat belt, please tighten it during use to ensure safety.

There are some small parts for assembly, please keep small parts far away from children under 3 years old to prevent injury.

Check all the parts before assembly to avoid injuring children. Please keep the plastic packing materials far away from children.

Do not get into vehicle while charging. Please regularly check the product to make sure the battery, charger, wire plugs, shells and other components are not damaged. If you have discovered any damages mentioned above, stop using until it is repaired.

Choking hazard warning: Not suitable for children under 36 months, small parts

The toy must be assembled by an adult.

## WARNING ABOUT CHARGING

1. Important! Before using the vehicle for the first time the battery needs to be charged for 16 hours. Failure to do so may damage the battery and can't be repaired.

2. Insert the charger plug into charging hole of the vehicle first, then connect the other end with power supply.

3. Charge the vehicle after each use of 1 hour, normal charging time is 10 to 12 hours.

4. Each charge doesn't exceed 18 hours.

5. Only an adult who has read and understood the safety warnings may handle, charge or recharge of the battery.

04

6. If the vehicle won't be used for a long time, it needs to be charged at least once per month.

7. The charge and the battery may get a little warm, but it is acceptable if the temperature is below 60°C.

8. The charging hole and jack must not wet or it may cause short-circuit.

9. Charge the vehicle only with the proprietary charger sold with the product.

10. Note: It is not necessary to remove the battery from the vehicle for charging.

## Maintenance

- The vehicle should be checked for damage, missing or badly worn parts before each use.
- Check the tightening of the fasteners before each use.
- Check the tightening of the wheel locknuts.
- Note: If the wheel locknuts are not tightened, the drive wheel will not engage and the vehicle will not run.
- Ensure the battery is firmly in place before use.
- Do not use oil on plastic or nylon parts.
- Store the vehicle indoors or cover it with a tarpaulin to protect it from the wet weather.
- Keep it away from sources of heat, such as stoves and heaters.
- Clean vehicle with a soft, dry cloth.
- Abrasive cleaners or wash the vehicle with soap or water, because they damage the motor, electrical system and battery.
- Regularly examine for the damage to the cord, plug, enclosure and other parts of the battery and charger which used with the vehicle. In the event of such damage, the battery and charger must not be used until that damage had been repaired.

## Warning

Never change the vehicle parts or circuit without manufacturer's introduction.

## WARNING

### 1. Battery warning

1) If the product is not used for a long time, please fully charge the battery and then turn off the power switch to store the car. The battery shall be recharged once a month.

otherwise the battery service life will be shortened or it cannot be recharged again.

2) Pay attention to the positive and negative poles of the battery during installation (do not allow a reverse connection or short connection of the positive and negative poles of the battery).

3) This product requires two DC 1.5 AAA batteries (not included in this product)

4) Recharging operation of rechargeable batteries can only be done by adults.

5) Non-rechargeable batteries cannot be charged.

05

6) The rechargeable batteries can be charged only after being taken out from the remote-control battery compartment.

7) Please do not mix different types of batteries or used batteries with new batteries.

8) If this product has not been used for a long time, the batteries must be taken out from the remote-control battery compartment.

9) Exhausted batteries are to be removed from the toy.

## 2. Product warning:

1) There may be potential sharp edges, sharp points or small parts before the assembly of this product, and therefore this product must be assembled by an adult.

2) To avoid suffocation, keep the plastic bags out of the reach of children. Dispose of all the bags immediately.

3) The children must correctly use the car under adult guidance and supervision, otherwise they may injure themselves or others.

4) The car is suitable for being driven on the flat ground and it is strictly prohibited to be driven in dangerous places such as streets, road, slopes and beside swimming pools or other wet areas, otherwise traffic and drowning accidents may occur.

5) Please put on shoes and protection equipment before use, such as fastening the safety belt and putting on the helmet, gloves, knee pads, etc.

6) Small parts possibly fall off when this product is used improperly. So, it is unsuitable for children under 36 months old.

7) Regularly check whether the battery, charger, wire, plug, casing and other parts are damaged; if damage occurs, please cease to use this product until it has been repaired.

8) This product can only be used by a child; the maximum load is 30kg, so overloading is not allowed.

9) Keep away from fire.

10) The product instructions shall be kept as they contain important information.

06