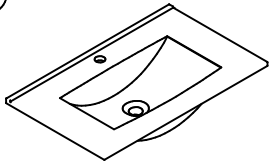


INSTRUCTION MANIAL

VANITY

Parts

A



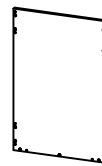
Sink 1PC

B



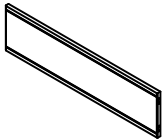
Side Panel-Left 1PC

C



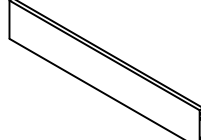
Side Panel-Right 1PC

D



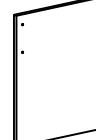
Fake drawer 1PC

E



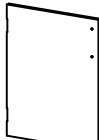
Back Panel 2PCS

F



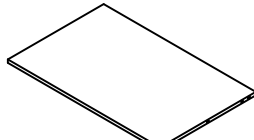
Door-Left 1PC

G



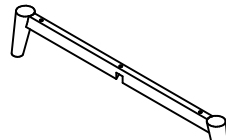
Door-Right 1PC

H



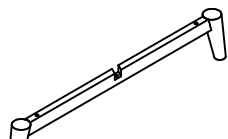
Bottom 1PC

I



Leg 1PC

K

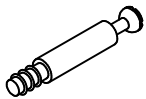


Leg 1PC

Hardware

1

Cam Lock Screw



18 PCS

2

Cam Lock



18 PCS

3

Wooden



16 PCS

4

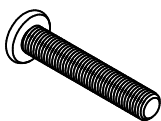
Hex Wrench



1PC

5

Bolt M6x45



5 PCS

6

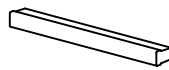
Screw M3x12



8 PCS

7

Handle



2 PCS

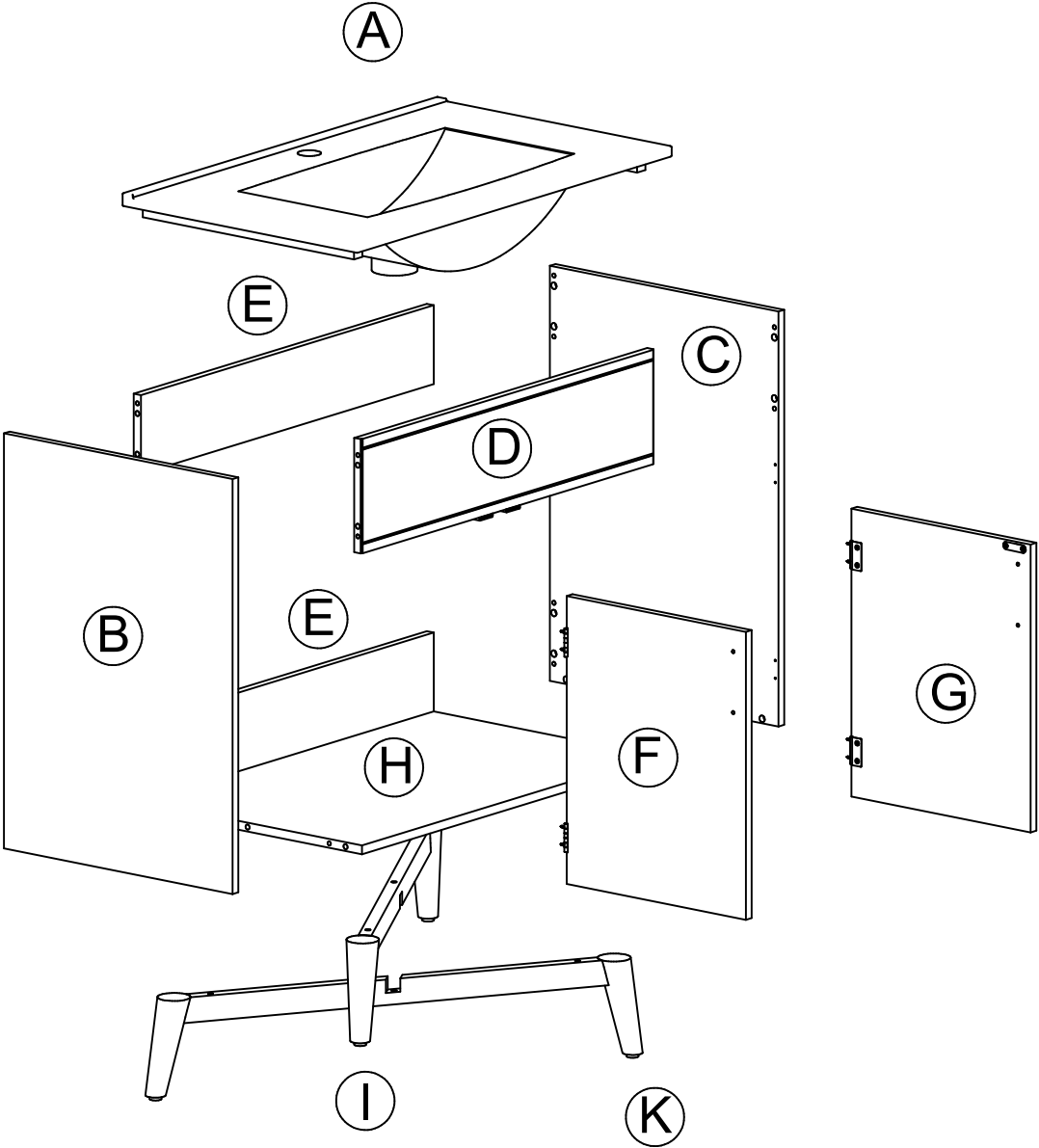
8

Screw M4x20



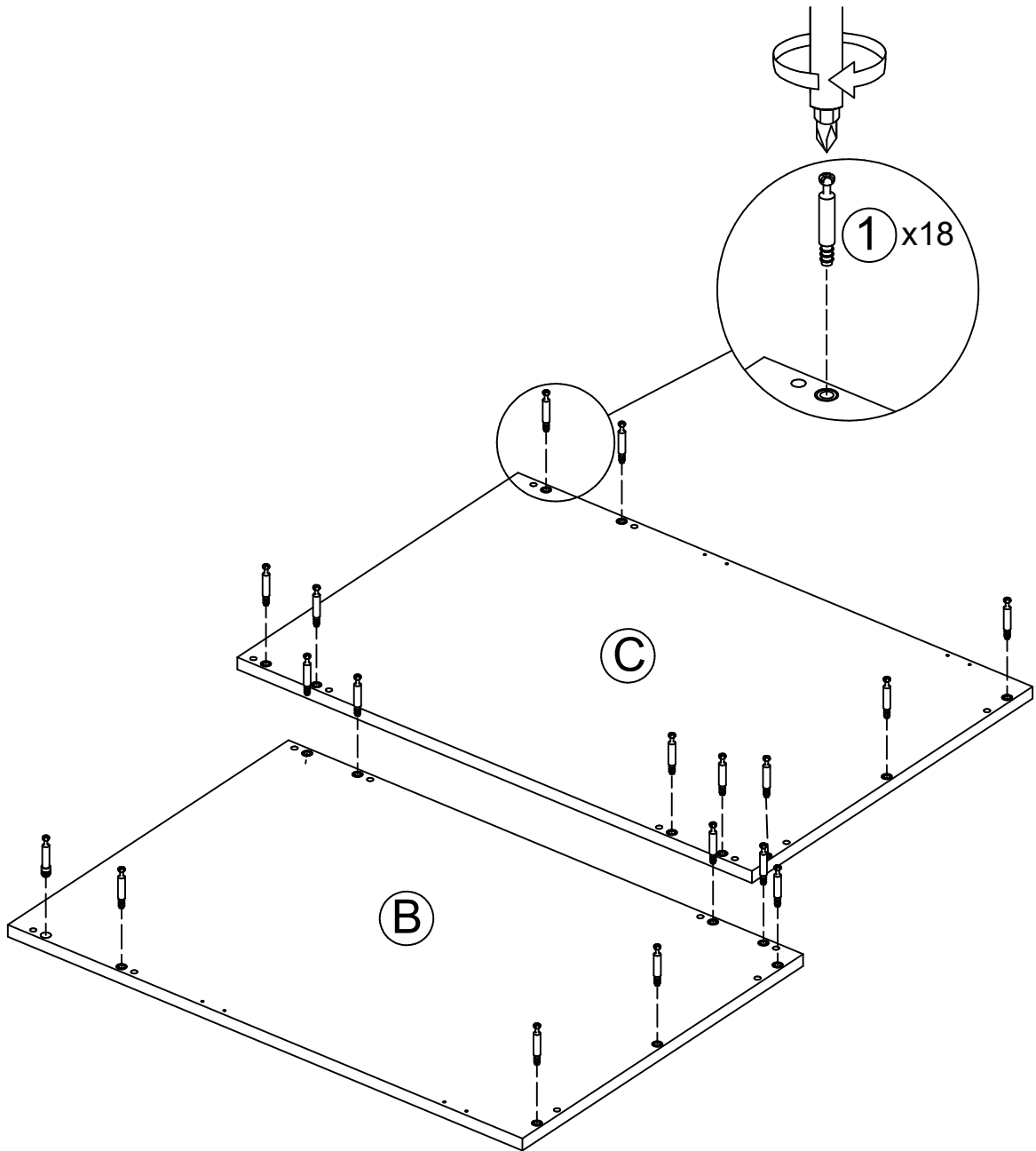
4 PCS

Note: To Save installation time, it's recommended to identify components before assembly!



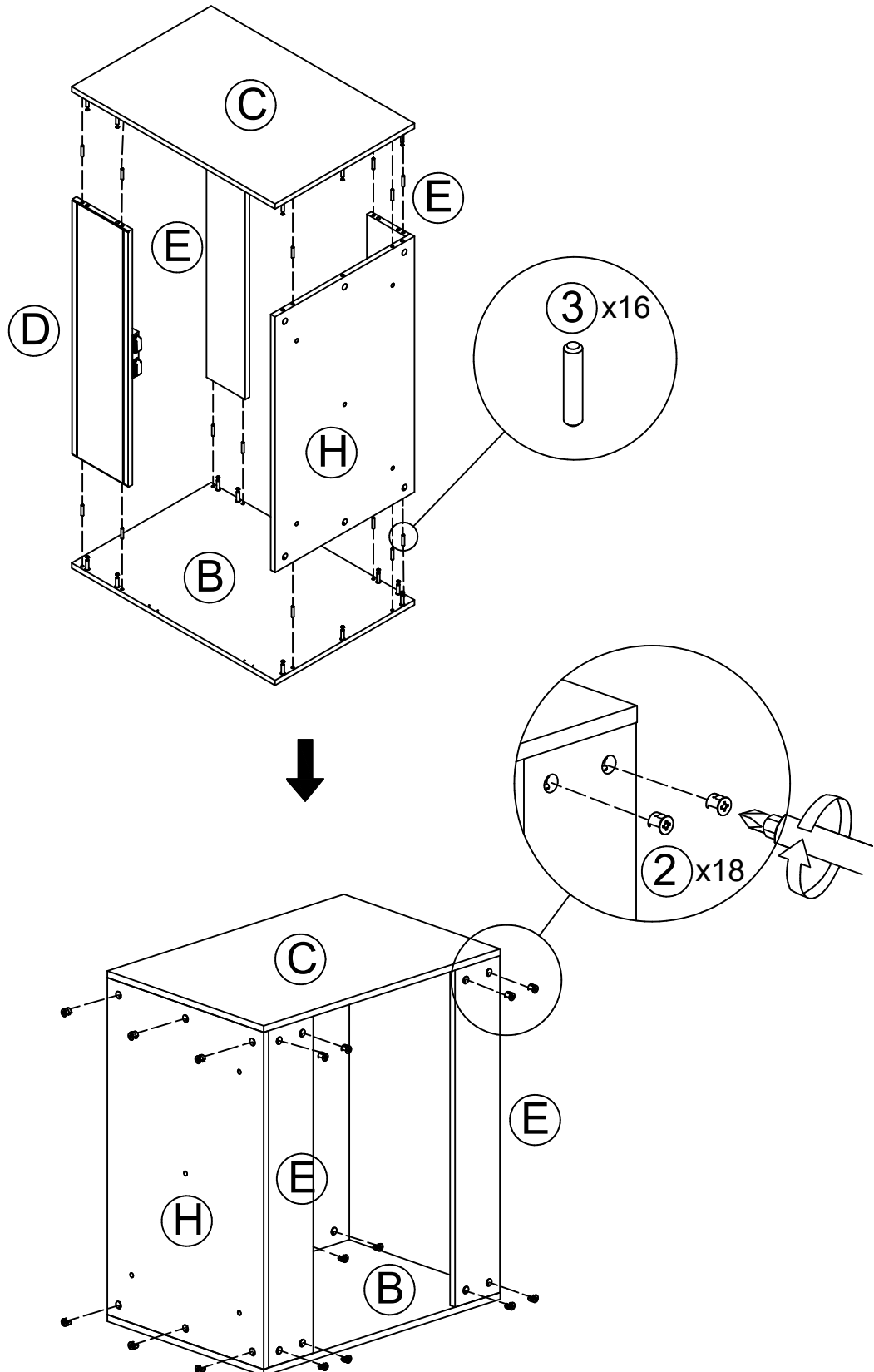
PRODUCT ASSEMBLY

- 1 Insert Cam Lock Screws (1) into pre-drilled holes in Side Panel (B), Side Panels (C), then tighten.



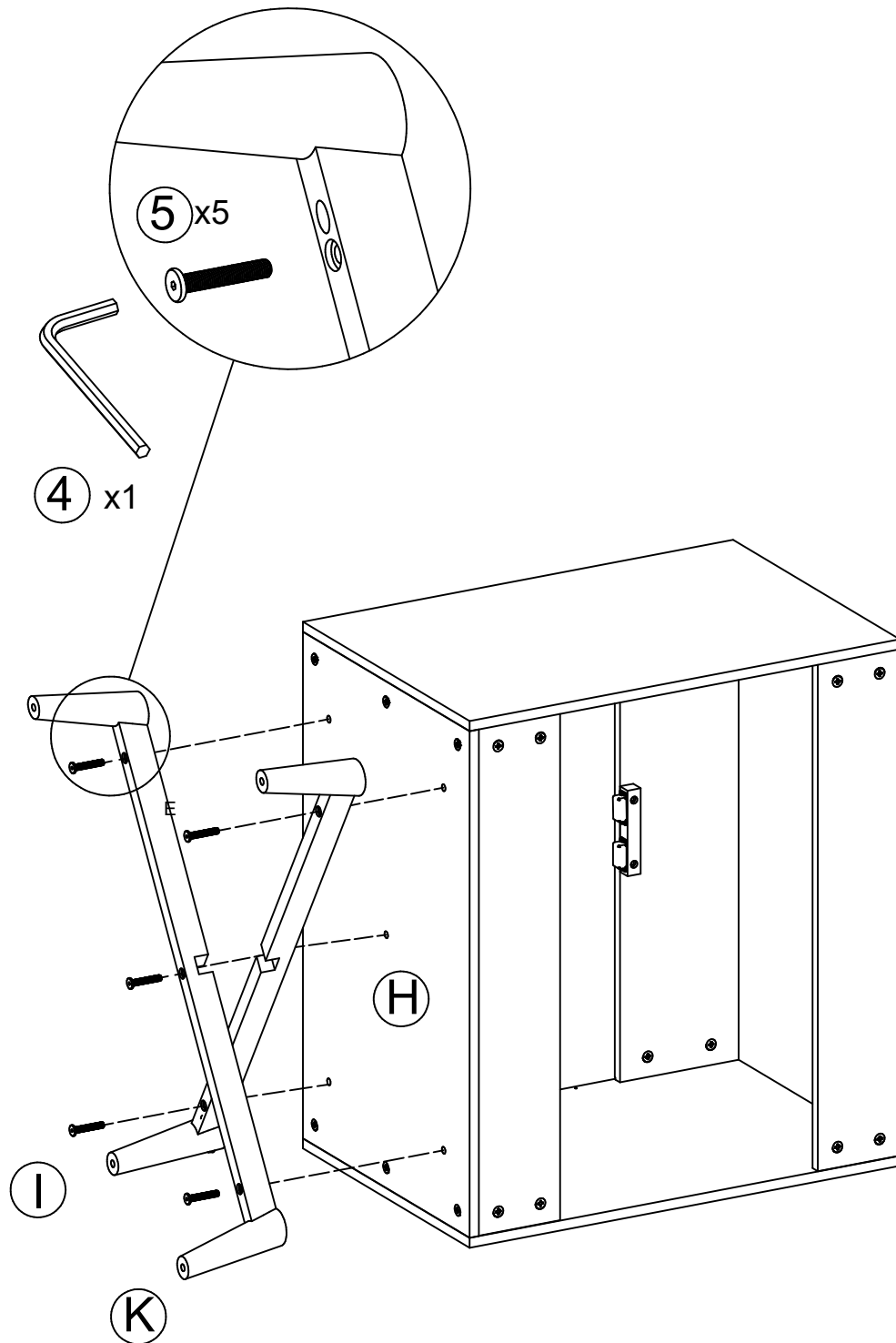
PRODUCT ASSEMBLY

- 2 Attach Side Panels (C), Fake drawer (D), Back Panel (E), Bottom (H) to Side Panels (B) with Wooden (3) and Cam Lock (2).



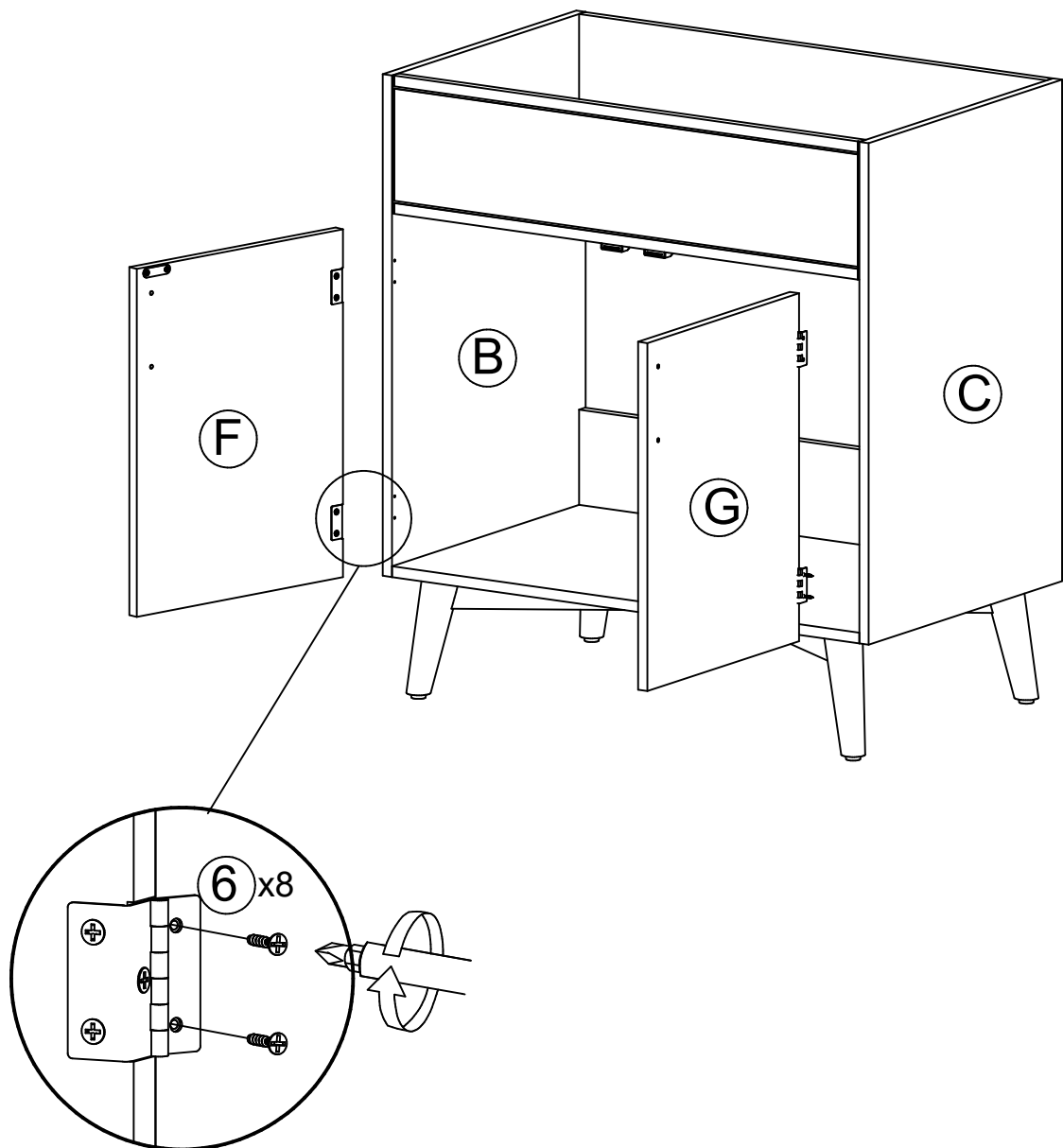
PRODUCT ASSEMBLY

- 3 Attach Leg (I) and (K) to Bottom (H) with Bolt (5).



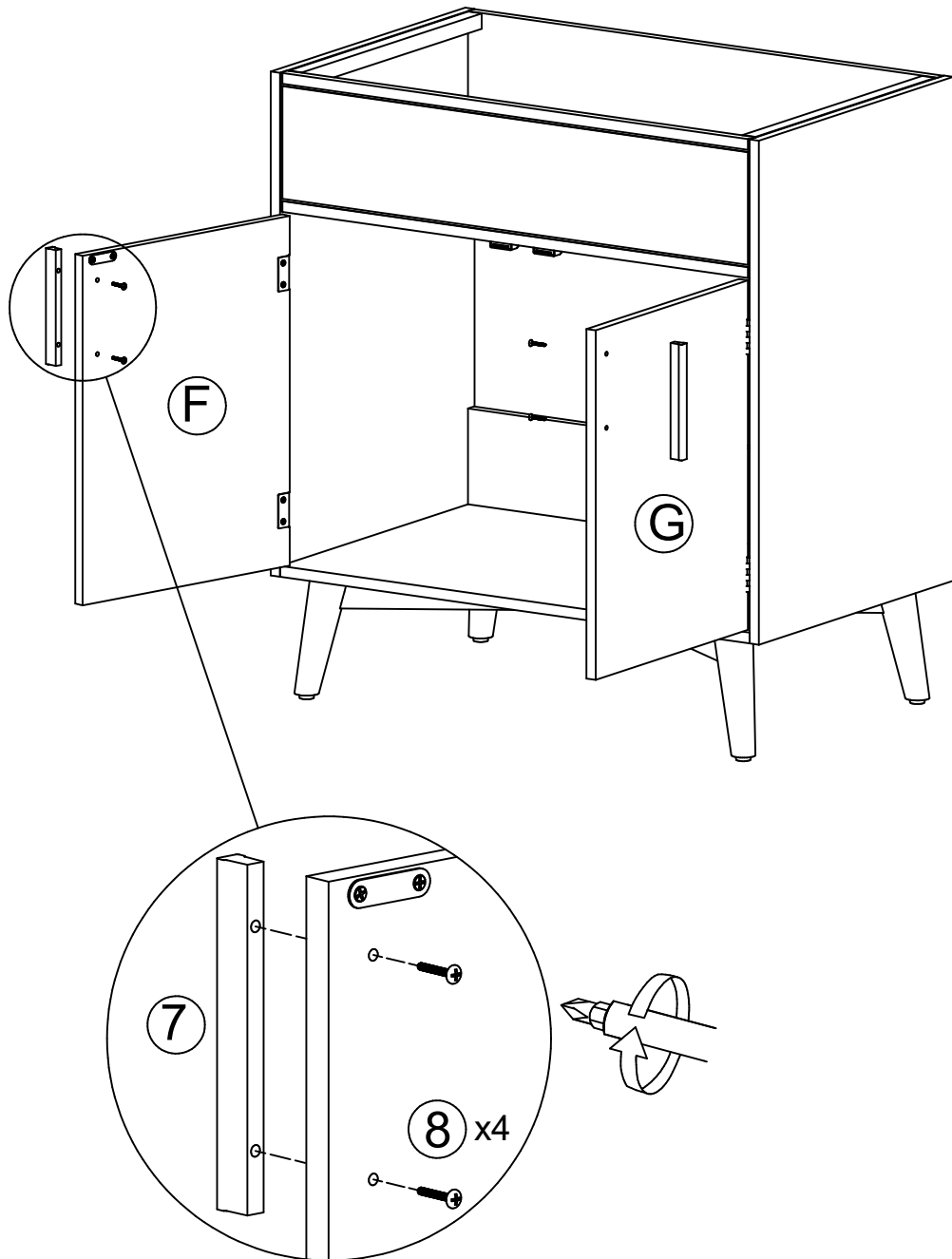
PRODUCT ASSEMBLY

- 4 Attach Door left (F) to Side Panels (B),
Door right (G) to Side Panels (C) with Screw (6)



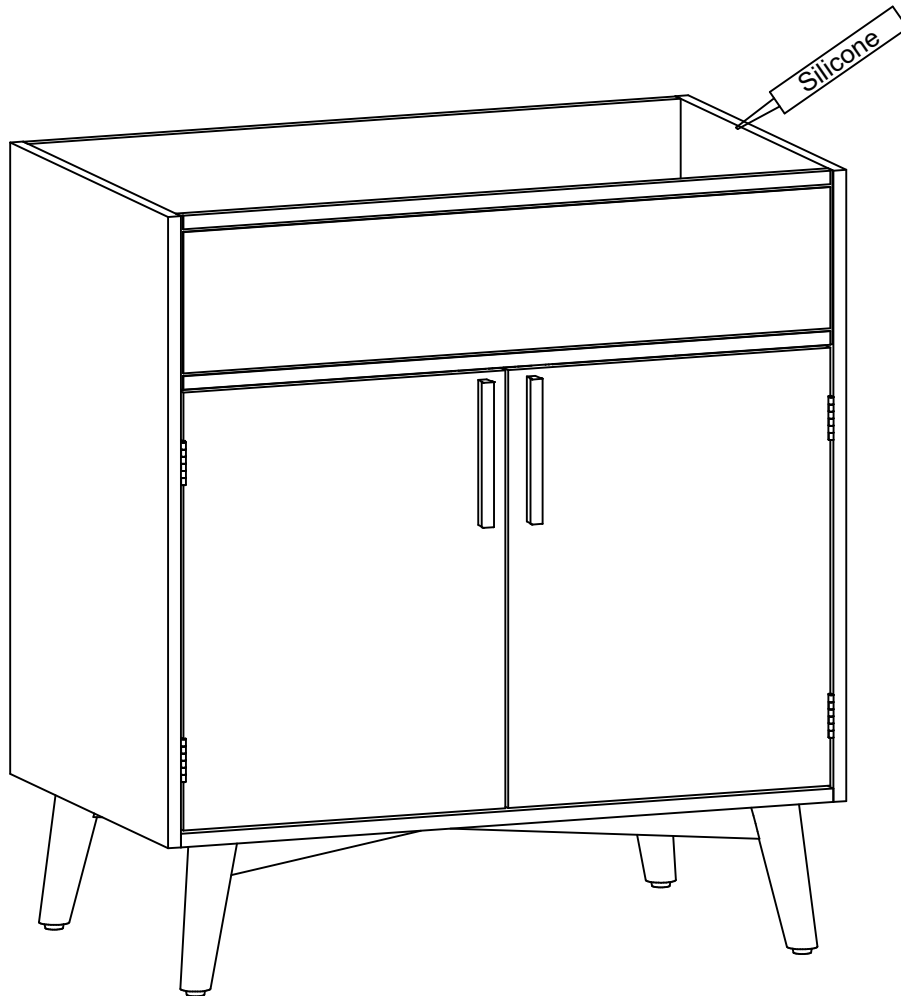
PRODUCT ASSEMBLY

- 5 Attach Handles (7) to Door (F) & (G) with Screw (8)



PRODUCT ASSEMBLY

- 6 Apply a thin bead of silicone compound around the vanity base and set the vanity top carefully in place.



PRODUCT ASSEMBLY

- 7 Attach Sink (A) to the vanity base
Insert Adjustable Pins into legs at desired level.
Don't move until silicone dry.

