

Installation points

Choose the place that is most easily absorbed by direct sunlight for installation. The stronger the sunlight, the longer the direct sunshine time, the better the charging effect.

- **The following environment is not suitable for installation**

- ① **Glass room** (although there is sunlight, but the glass block affects the light intensity, which affects the battery charging)
- ② **Monitoring area** (monitoring the area to be illuminated should not be installed, monitoring infrared light will affect the brightness of the lamp)
- ③ **Under the roof** (the area where the lamp is installed cannot have roof coverings, trees and other coverings that affect sunlight)
- ④ **Areas with short lighting time** (the position of the solar light installation should be at least six hours of sunlight)

Instruction manual

- When the lamp is not bright or the lamp is in use for a short period of time, please place the lamp in a place where the sun is shining directly, and then use it after two days of storage. If it still does not light or working time is short. Please contact the factory.
- After using the solar light for a long time, please clean up the dust on the solar panel to avoid affecting the charging effect.
- The lack of light in the rainy weather will affect the intensity and time of the lighting to a certain extent.
- The product has a built-in battery, please stay away from fire, so as not to cause explosion hazard.

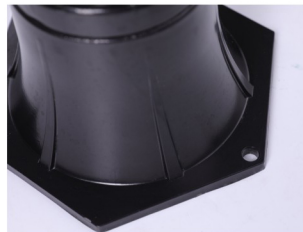
Installation points



- ① Screw the pole cup to the lamp body.



- ② The hole of the first pole of the bottom rod is aligned with the hole of the base, and then the screw is tightened to connect the pole to the base.



- ③ Use an electric drill to drill holes in the hardened ground according to the hole distance of the base, then insert the expansion screw into the hole, tighten the screw to fix the base, and install it.



- ④ Open the switch (left and right toggle switch), select the light color according to your preference.