

Instruction Manual

ELECTRICAL SAFETY INSTRUCTIONS

All fittings must be installed by a competent person or a qualified electrician.

IMPORTANT:

Always switch off the electrical supply at the mains during installation and maintenance. It is recommended that the fuse is withdrawn or the circuit breaker is switched off for the necessary circuit before installation commences.

This product is only suitable for permanent installation. It is only suitable for indoor use. Do not attach the product to surfaces that are damp or otherwise electrically conductive.

Do NOT strike glass components with hard or pointed items.

Do NOT place very hot or very cold items against or in close proximity to glass surfaces.

This product should be positioned well away from curtains and other fabrics.

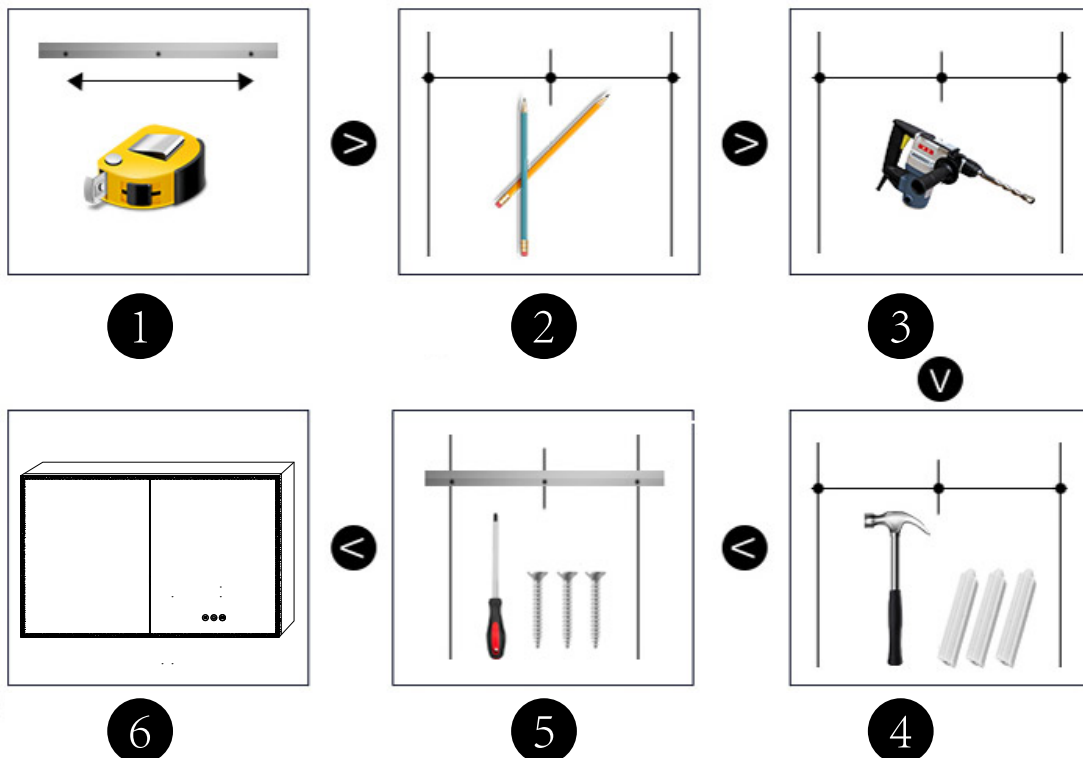
Never cover the mirror. This product is heated, we recommend that it is turned off after use and should never be left on for prolonged periods of time.

Important: Wiring Code:

Live=Black, Neutral=White, Earth=Green.

Input Voltage: 108-132V, 60Hz

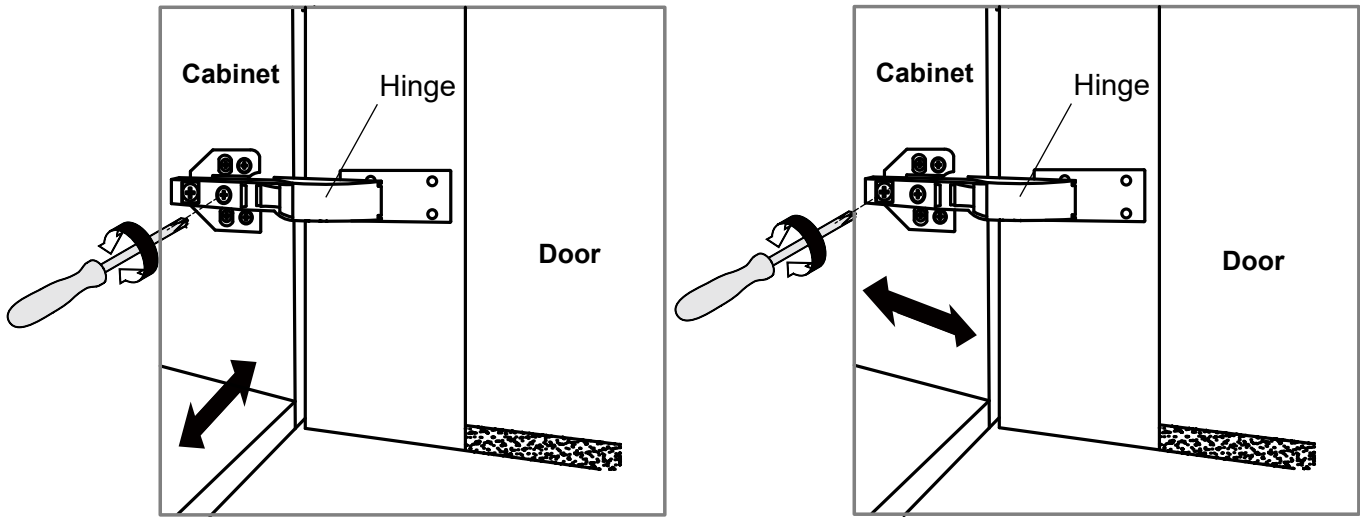
Lamp: 12V LED Strip / Mirror Defogger: 12V, IP54.



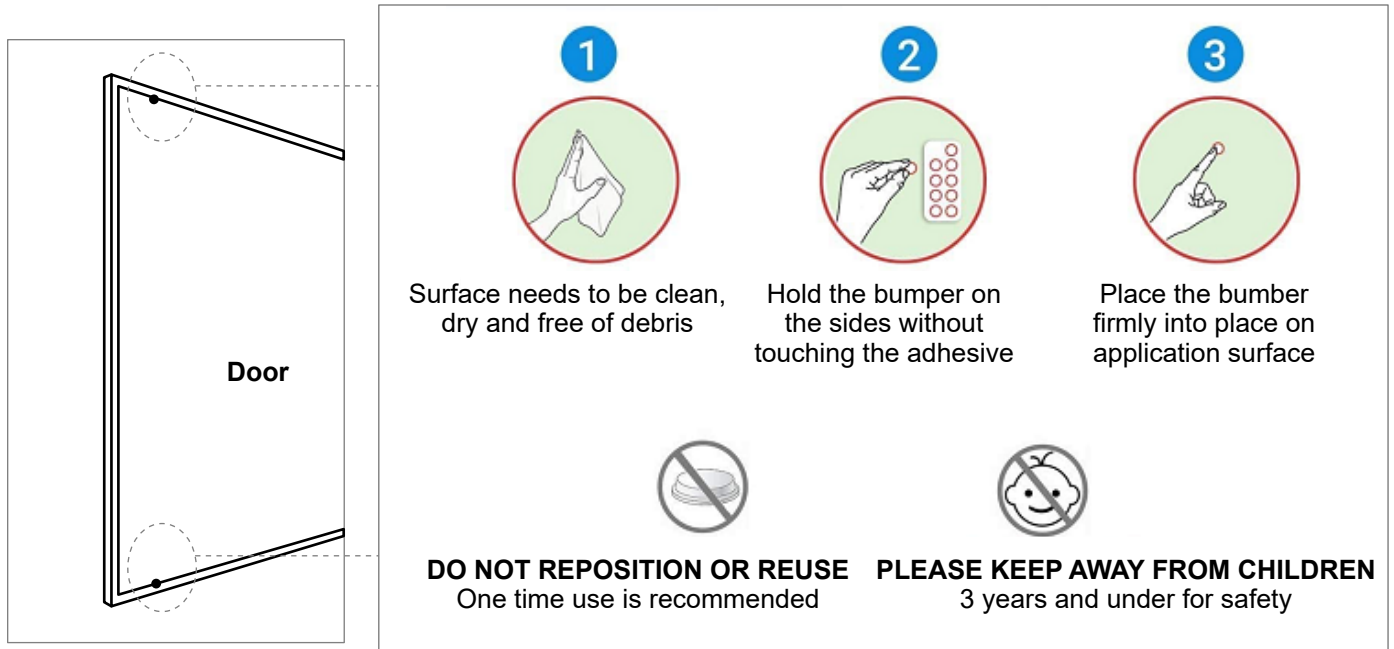
- 1.To Locate the position where the mirror cabinet to hang on with included aluminum alloy back plate.
- 2.Use the pencil to draw the drill holes onto the wall.
- 3.Use the driller (5/16" drill) to punch at the pre-draw points.
- 4.Use a hammer to insert the expansion screws tube into the holes.
- 5.Use the cross screwdriver to fix the aluminum alloy plate onto the wall.
- 6.Connect the power, then hang up the mirror cabinet.(Setup finished)

FOR INDOOR USE ONLY!

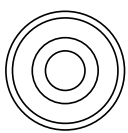
How to adjust the gap between mirror door



How to use door bumper



Introduction of Touch Function



Light Function

Short press: ON/Off

Long press: Dimming



Light Function

Short press: Adjust the color temperature



Defogger Function: ON/OFF

Defogger can be turn off automatically one hour later.

CLEANING

It is recommended that the unit is cleaned with a soft, dry, non abrasive cloth when turned off. Never use cleaning agents or abrasive materials on any type of surface finish. Do not allow moisture to come into contact with the electrical components.

FOR INDOOR USE ONLY!