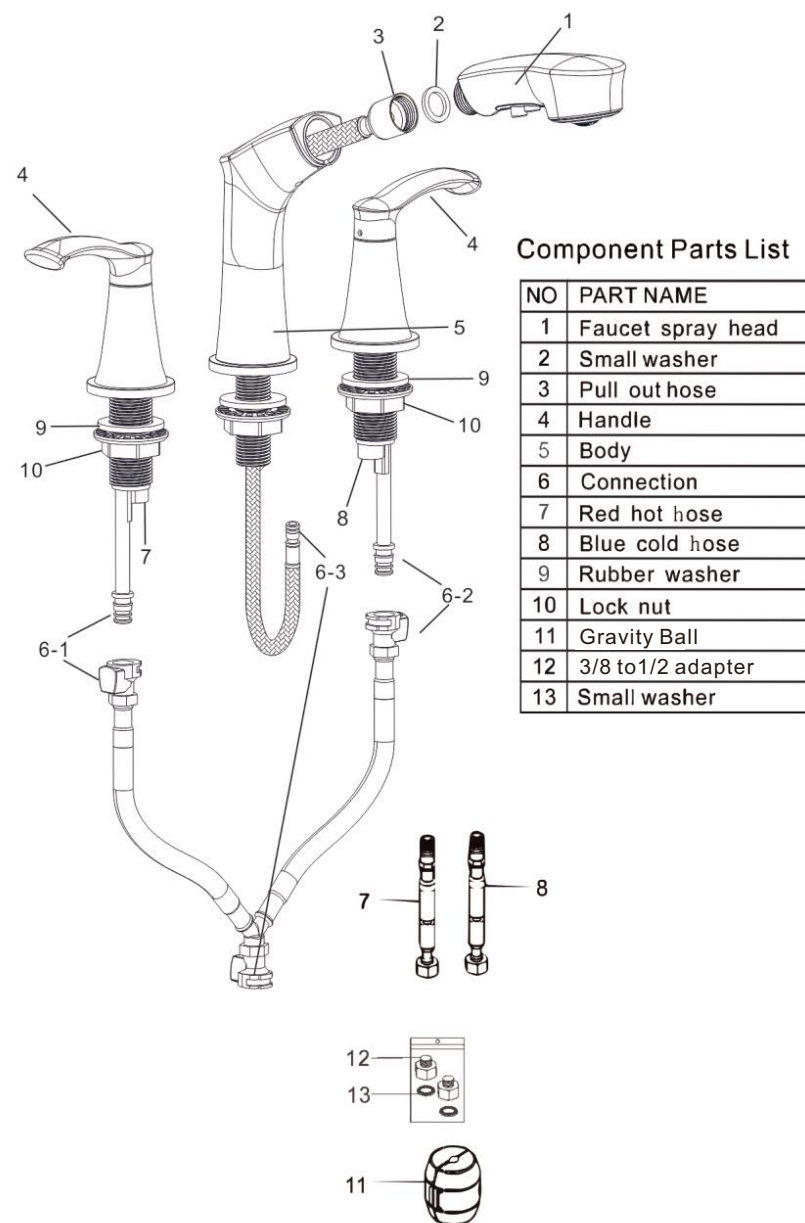
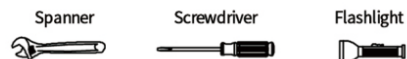


4" Centerset Lavatory Faucet



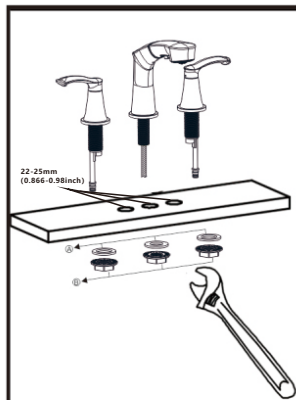
Required Tools



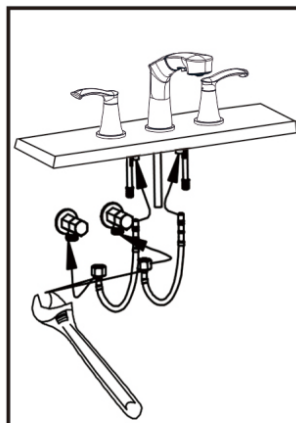
⚠ Points for attention before installation

- Before installing the faucet, be sure to remove impurities and sludge in the pre-buried cold and hot water pipes to avoid clogging and affecting the water outlet function.
- The working water pressure of the faucet is 0.5-5kgf/cm²
- If the picture or text description in this installation manual does not match the actual product, please refer to the actual product!

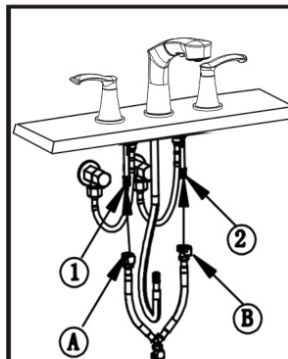
Installation Steps



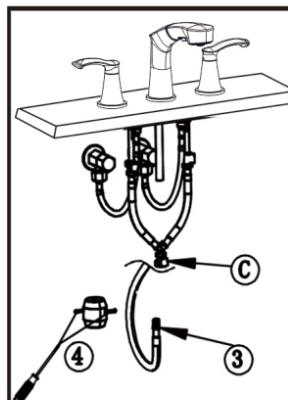
1. Twist off the 3/4 nut, put the threaded rod foot and the drawing tube of the faucet body through the reserved hole on the countertop, put the washer A into the screw pad and then tighten the nut B, and finally tighten the nut B with a wrench.



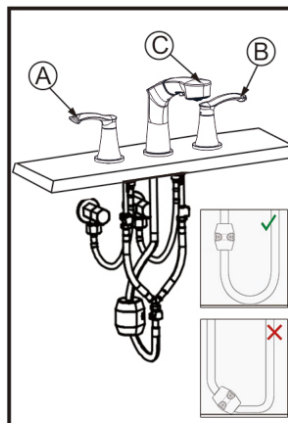
2. Connect the water inlet pipe according to the left heat and right cold as shown in the figure, and tighten the nut with a wrench.



3. Insert the bifurcated ends A、B of the quick connector into the faucet ① and ② to connect them tightly.



4. Insert the end ③ of the drawing tube into the end C of the three-prong quick connector, and twist off the two left and right screws of the gravity ball ④. After separating, buckle gravity ball on the drawing tube, and turn the screw to tighten.



5. Turn on the A and B handle to observe all the interfaces, make sure that there is no dripping, and pull C back and forth to make sure that there is no blockage.

Notice: The gravity ball is installed on the side close to the sprayer, and its installation position and the drawing tube will not touch the bottom of the cabinet during use.