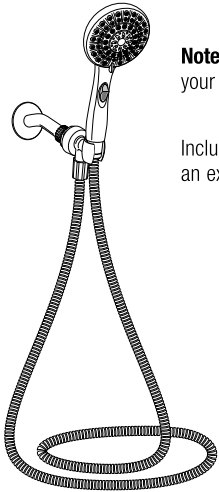


# Instruction Manual

## ENGLISH

To begin your shower experience we want to give you all of the proper information to make installation easy and quick. This way you are that much closer to enjoying an invigorating shower with your new shower head.



**Note:** Pictures shown may not directly match your shower head.

Includes an extra long 5-foot hose, perfect for an extended reach to bathe your children.

## PRIOR TO INSTALLATION

Remove old shower head and remove all pipe tape as well.

Ensure that the washer from the old shower is not connected to the pipe. Use a thin utensil to check inside the pipe for washers, such as a pencil or screw driver. **Do not use your fingers.**

Gather the tools necessary to install your new shower head.



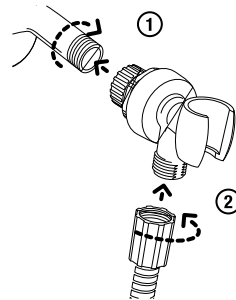
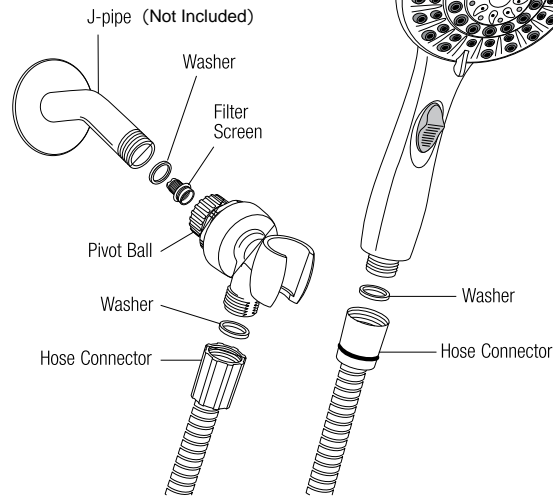
Adjustable Wrench or Pliers (not included)



Pipe tape is not recommended.

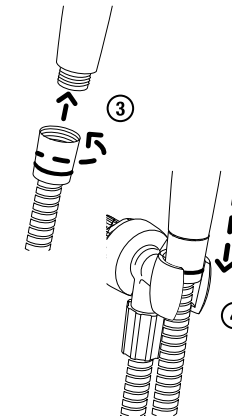
## INSTALLATION

### Hand held Shower Head

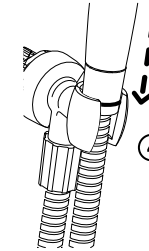


1 Tighten pivot ball to pipe. Ensure it is secure by hand tightening.

2 Connect the ridged connector to the bracket and hand tighten. (See note below).



3 Connect other end of hose to the hand held shower head and hand tighten.



4 Place hand held shower head in bracket.

**Note:** Several U.S. state and local municipal plumbing codes require the use of a backflow prevention device when installing a hand shower. This device is termed a vacuum breaker. If your hand shower includes a vacuum breaker it will be located in the hose, and the hose end with the vacuum breaker will include a sticker that reads attach this vacuum breaker end to shower bracket. If the hose is not installed in this manner, water will not flow.