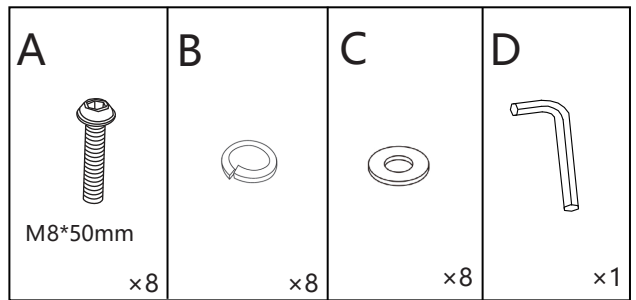
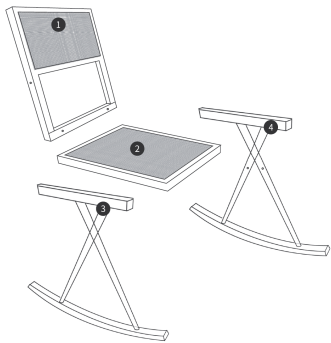
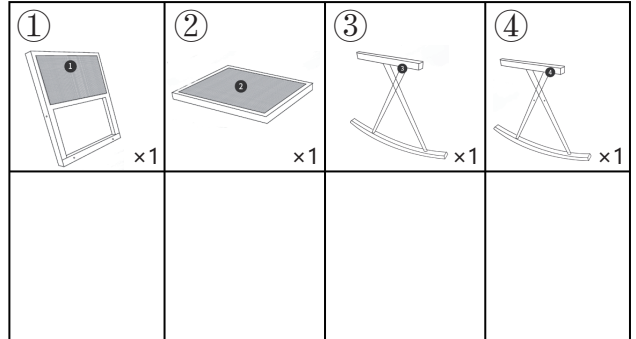


ASSEMBLY INSTRUCTIONS



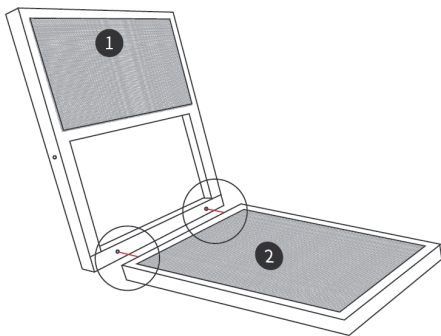
Parts

RC-DI-200-YM



STEP 1

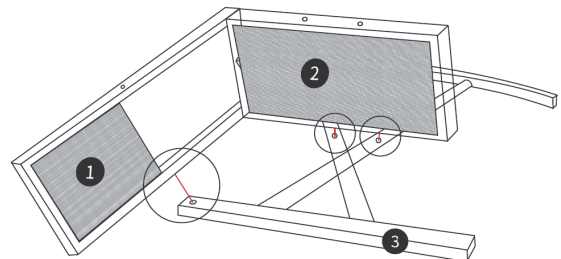
Connect 1 and 2, place B and C onto A in sequence, then connect them to the two holes in the backrest, and tighten them to 80% tightness using D.



A×2
B×2
C×2
D×1

STEP 2

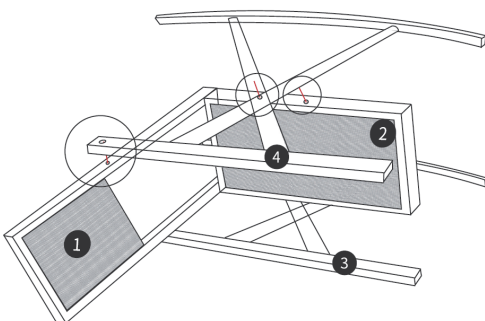
Connect (1, 2) and 3, place B and C onto A in sequence, then connect them to two holes on the seat plate and one hole on the side of the backrest, and tighten them to 80% tightness with D.



A×3 C×3
B×3 D×1

STEP 3

Connect (1, 2, 3) and 4, place B and C onto A in sequence, then connect them to two holes on the seat plate and one hole on the side of the backrest, and tighten them to 80% tightness with D.



A×3
B×3
C×3
D×1

STEP 4

Finally, tighten all screws.

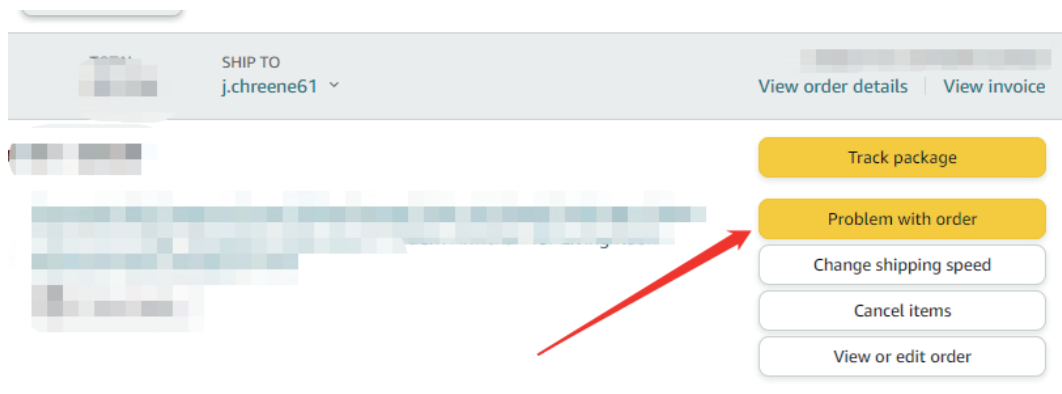


Please feel free to contact us if there any damage caused in transit.And do not return the product without communication. That's very important for us. Thank you for your understanding.

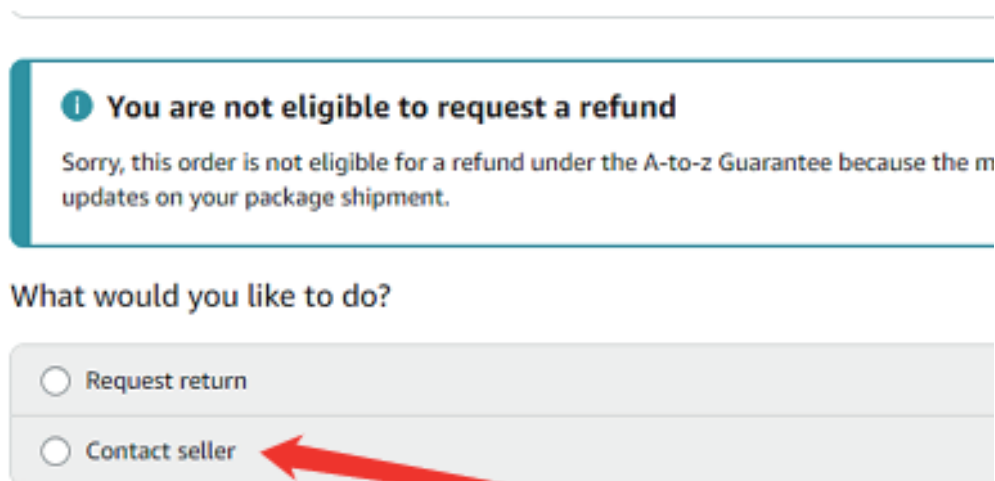


You can contact us in the following ways :

1.Find your order in the list and Select **【Problem with order】** .



2. Choose your topic from list displayed and Select **【Contact seller】** .



3. We will get back to you immediately as soon as we receive your message.

