

# OWNER'S MANUAL & SAFETY INSTRUCTIONS

Save This Manual Keep this manual for the safety warnings and precautions, operating, assembly, inspection, maintenance and cleaning procedures. Keep this manual in a safe and dry place for future reference.

## ***Heavy Duty Floor Jack 2 & 2.5 & 3 & 3.5 & 4 Ton Double Pump***








### **⚠ WARNING**

Read carefully and understand all **ASSEMBLY AND OPERATION INSTRUCTIONS** before operating. Failure to follow the safety rules and other basic safety precautions may result in serious personal injury.

# Table of Contents

Important Safety Information.....	2
Specifications.....	3
Operating Instructions.....	4
User-Maintenance Instructions.....	6
Parts List & Diagram.....	7
Trouble Shooting.....	8

## WARNING SYMBOLS AND DEFINITIONS

	This is the safety alert symbol. It is used to alert you to potential personal injury hazards. Obey all safety messages that follow this symbol to avoid possible injury or death.
	Indicates a hazardous situation which, if not avoided, will result in death or serious injury.
	Indicates a hazardous situation which, if not avoided, could result in death or serious injury.
	Indicates a hazardous situation which, if not avoided, could result in minor or moderate injury.
	Addresses practices not related to personal injury.

## IMPORTANT SAFETY INFORMATION

### WARNING

**Read all safety warnings and instructions.** *Failure to heed these markings may result in personal injury and/or property damage.*

**Save all warnings and instructions for future reference.**

The warnings, precautions, and instructions discussed in this manual cannot cover all possible conditions and situations that may occur. It must be understood by the operator that common sense and caution are factors which cannot be built into this product, but must be supplied by the operator.

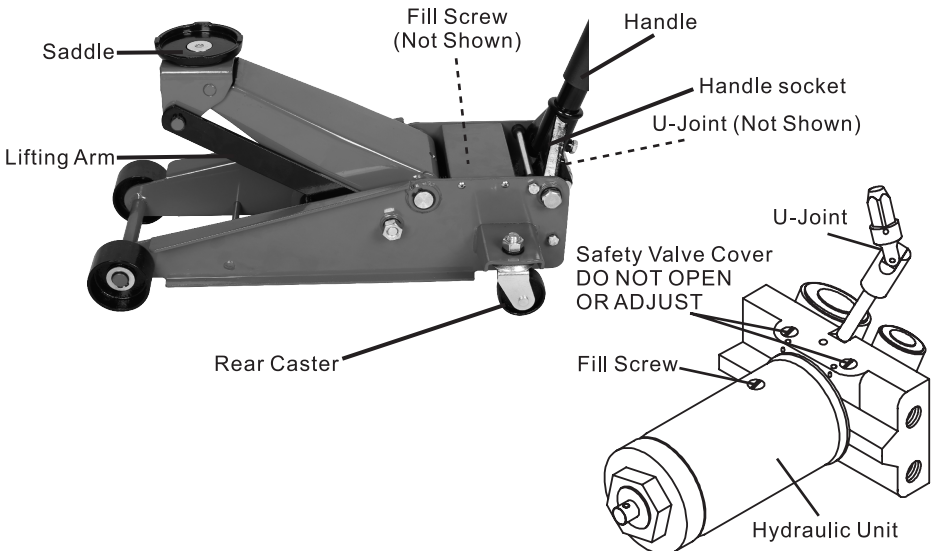
 **SAVE THESE INSTRUCTIONS**

1. Wear safety goggles, heavy-duty work gloves, steel-toe work boots, and hard hat during assembly and/or use.
2. Do not exceed rated capacity.
3. Use only on hard, level surfaces.
4. Lifting device only. Immediately after lifting, support the vehicle with appropriate means.
5. Do not move or dolly the vehicle while on the jack.
6. Failure to heed these markings may result in personal injury and/or property damage.
7. Lift only areas of the vehicle as specified by the vehicle manufacturer.
8. No alterations shall be made to this product.
9. Never work on, under or around a load supported only by this device.
10. Do not adjust safety valve.
11. Keep clear of load while lifting and lowering.
12. Lower load slowly.
13. Apply parking brake and chock tires before lifting vehicle.
14. Lift vehicle only at manufacturer recommended locations.
15. Inspect before every use; do not use if parts are loose or damaged.
16. Do not use for aircraft purposes.
17. The warnings, precautions, and instructions discussed in this manual cannot cover all possible conditions and situations that may occur. The operator must understand that common sense and caution are factors, which cannot be built into this product, but must be supplied by the operator.
18. The brass components of this product contain lead, a chemical known to the State of California to cause cancer, birth defects (or other reproductive harm).

**IMPORTANT! Before first use:**  
 Check hydraulic fluid level and fill to 1/4" below the fill port as needed - see instructions on page 4.  
 Thoroughly test the Jack for proper operation. If it does not work properly, bleed air from its hydraulic system - see instructions on page 4.

## Specifications

Capacity	2/2.5 Ton	2.5/3 Ton	3.5/4 Ton
Min Height	75 mm	130 mm	102 mm
Max Height	505 mm	460 mm	520mm



# Operating Instructions



Read the **ENTIRE** IMPORTANT SAFETY INFORMATION section at the beginning of this manual including all text under subheadings therein before set up or use of this product.

## Tool Set Up

### Attaching the Handle

---

1. Fasten the Upper Handle to the Lower Handle.
2. Loosen the Set Screw and insert the assembled Handle into the Handle Socket.
3. Tighten the Set Screw.

### Bleeding

---

1. Loosen the Fill Screw.
2. Insert the Handle into the Handle Socket to operate the Release Valve.
3. Turn the Handle counterclockwise to open the valve.
4. Pump the Handle up and down quickly several times to purge air from the system.
5. Tighten the Fill Screw.

### Adding Oil

---

1. Remove the Fill Screw.
  2. Add high grade hydraulic fluid into the Fill Screw slowly until the oil reaches the top of the oil fill hole.
  3. Replace the Fill Screw.
- Note:** Do not touch the Handle when adding the hydraulic oil.

## Lifting

---

### **WARNING**

**Park vehicle on a flat, level, solid, surface safely away from oncoming traffic. Turn off the vehicle's engine. Place the vehicle's transmission in "PARK" (if automatic) or in its lowest gear (if manual). Set the vehicle's emergency brake. Then, chock the wheels that are not being lifted.**

1. Turn the Handle counterclockwise to lower the Jack. Once the Jack is fully lowered, turn the Handle firmly clockwise to close it.
2. Carefully position the Saddle of the Jack under the vehicle manufacturer's recommended lifting point. (See vehicle manufacturer's owner's manual for location of frame lifting point.)
3. Pump the Handle until the top of the Jack's Saddle has nearly reached the vehicle lifting point. Position the Saddle directly under the vehicle's lifting point.
4. To lift the vehicle, pump the Handle of the Jack. Use smooth, full strokes.
5. Once the vehicle is raised, slide a jack stand of appropriate capacity (not included) under a proper lifting point referred to in the vehicle owner's manual. Always use two jack stands, position them at the same point on each side of the vehicle.

- WARNING!** The rated capacity of jack stands is per pair, not the individual capacities combined unless specifically noted on the product by the jack stand manufacturer. Do not exceed rated jack stand capacity. Ensure that the vehicle support points are fully seated in the saddle of both jack stands. Use a matched pair of jack stands per vehicle to support one end only. Failure to do so may result in the load suddenly falling, which may cause personal injury and/or property damage.
6. Center the vehicle's lifting point(s) on the saddle of the jack stand(s). Set the jack stand(s) to the same height according to the manufacturer's instructions, making sure that they lock securely into position.
  7. Slowly turn the Handle counterclockwise to lower the vehicle onto the saddle(s) of the jack stand(s). Then, turn the Handle firmly clockwise to close it.

## Lowering

---

1. Carefully remove all tools, parts, etc. from under the vehicle.
2. Position the Saddle under the lifting point. Turn the Handle firmly clockwise and raise load high enough to clear the jack stands, then carefully remove jack stands.
3. Slowly turn the Handle counterclockwise (never more than 1/2 full turn) to lower the vehicle onto the ground.
4. Lower the Jack completely. Then, store in a safe, dry location out of reach of children.
5. To prevent accidents, turn off the tool and disconnect its power supply after use. Clean, then store the tool indoors out of children's reach.

# User-Maintenance Instructions



Procedures not specifically explained in this manual must be performed only by a qualified technician.

## **⚠️ WARNING**

**TO PREVENT SERIOUS INJURY FROM TOOL FAILURE:**  
Do not use damaged equipment. If abnormal noise or vibration occurs, have the problem corrected before further use.

## Cleaning, Maintenance, and Lubrication

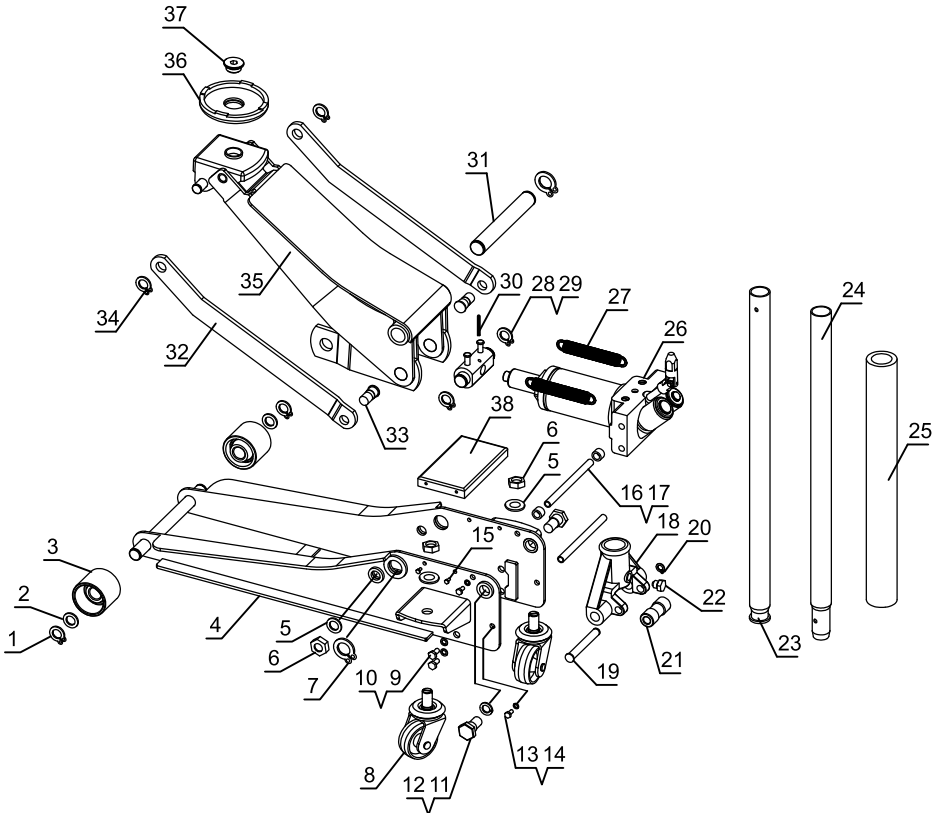
---

1. Before each use, inspect the general condition of the Jack. Check for broken, cracked, or bent parts, loose or missing parts, and any condition that may affect the proper operation of the product. If a problem occurs, have the problem corrected before further use.
2. Before each use, thoroughly test the Jack for proper operation prior to its actual use. If the Jack appears not to be working properly, follow Bleeding the hydraulic Fluid instructions.
3. Change the hydraulic oil at least once every year. To change the hydraulic oil:
  - a. With the Jack fully lowered, remove the Oil Filler Plug on the side of the Housing.
  - b. Tip the Jack to allow the old hydraulic oil to drain out of the Housing completely, and dispose of the old hydraulic oil in accordance with local regulations.
  - c. With the Jack upright, completely fill the Housing with a high quality hydraulic oil (not included) until the oil is 1/4" below the fill hole.
  - d. Open the valve by turning the Handle counterclockwise and pump the Handle to bleed air from the system.
  - e. Recheck oil level and re-fill as needed.
  - f. Reinstall the Oil Filler Plug.

# Parts List and Diagram

Part	Description	Qty
1	Retaining Ring	2
2	Washer	2
3	Front Wheel	2
4	Frame	1
5	Washer	4
6	Nut	4
7	Retaining Ring	2
8	Rear Caster Assembly	2
9	Screw	4
10	Washer	4
11	Washer	2
12	Bolt	2
13	Screw	4
14	Washer	4
15	Screw	4
16	Tie Rod	2
17	Rubber Bumper	2
18	Handle Socket	1
19	Shaft	1

Part	Description	Qty
20	Retaining Ring	1
21	Handle Socket Roller	1
22	Set Screw	1
23	Lower Handle	1
24	Upper Handle	1
25	Handle Bumper	1
26	Hydraulic unit	1
27	Spring	2
28	Hydraulic Unit Adaptor	1
29	Retaining Ring	2
30	Pin	1
31	Lift Arm Shaft	1
32	Lift Arm Support	2
33	Bolt	2
34	Retaining Ring	2
35	Lift Arm	1
36	Saddle	1
37	Saddle Screw	1
38	Cover Plate	1



# TROUBLE SHOOTING



**TO PREVENT SERIOUS INJURY:**

**Use caution when troubleshooting a malfunctioning jack.**

**Completely resolve all problems before use.** If the solutions presented in the Troubleshooting guide do not solve the problem, have a qualified technician inspect and repair the jack before use.

**After the jack is repaired: Test it carefully without a load by raising it and lowering it fully, checking for proper operation, BEFORE RETURNING THE JACK TO OPERATION.**

For technical questions, please mail support@tonglimachine.com

**DO NOT USE A DAMAGED OR MALFUNCTIONING JACK!**

POSSIBLE SYMPTOMS						PROBABLE SOLUTION (Make certain that the jack is not supporting a load while attempting a solution.)
Jack will not lift at its weight capacity	Saddle lowers under load	Pump stroke feels spongy	Saddle will not lift all the way	Handle moves up when jack is under load	Oil leaking from filler plug	
X	X					Check that Release Valve is fully closed. Bleed air from the system.
X	X			X		Valves may be blocked and may not close fully. To flush the valves: 1. Lower the Saddle and securely close the Release Valve. 2. Manually lift the saddle several inches. 3. Open the release valve and force the saddle down as quickly as possible.
X		X	X			Jack may be low on oil. Check the oil level and refill if needed.
						Jack may require bleeding - see instructions on page Bleeding on page 4.
					X	Unit may have too much hydraulic oil inside, check fluid level and adjust if needed.