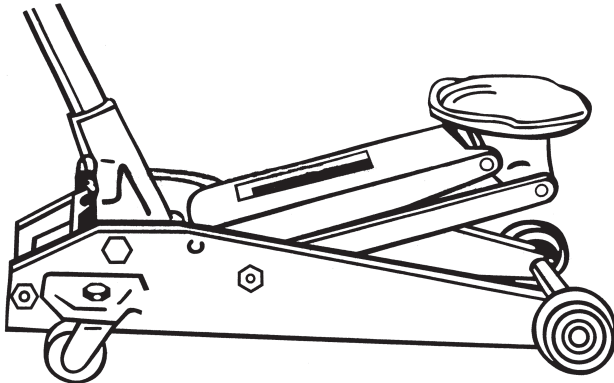

Operating Instructions and Parts List

GARAGE JACK



CAUTION

THIS JACK IS DESIGNED FOR LIFTING PURPOSES ONLY AFTER JACKING, ALWAYS USE SAFETY STANDS TO SUPPORT LOAD BEFORE MAKING REPAIRS. FOR YOUR SAFETY - DO NOT OVERLOAD BEYOND RATED CAPACITY.

OPERATING INSTRUCTIONS

IMPORTANT Sometimes during shipment and handling, air gets into the hydraulic system, causing poor lifting performance. Purge any air from the system by fully opening. Release Valve (turn handle counterclockwise as shown), then, while holding the saddle down, operate pump handle rapidly several times.

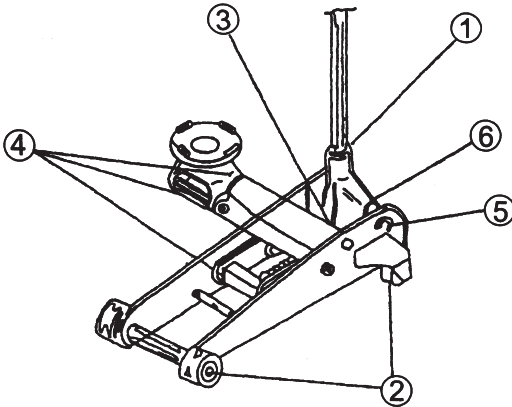
TO RAISE JACK

1. Turn the operating handle clockwise until release valve closes. Do not over tighten the valve. Place the jack directly under object to be lifted so that saddle takes up weight firmly and centrally. Check positioning under slight load to make sure jack will not slip when in use. Raise jack to required height. After lifting use jack stand to hold load for any length of time

TO LOWER JACK

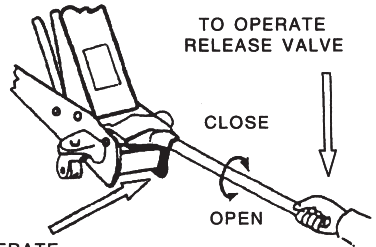
Slowly turn the operating handle counterclockwise. The speed of lowering is controlled by the amount valve is opened.

LUBRICATION POINTS

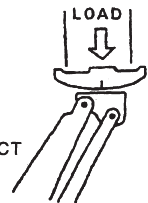


Before operating the jack lubricate the parts indicated in the diagram. Use lubricants as indicated by the following numbers as marked on the diagram.

- 1 **HANDLE.** Use light oil on moving parts and lightly grease handle at point it fits into the handle socket.
- 2 **WHEELS.** Use light oil on axles and caster bearings.



TO OPERATE JACK INSERT HANDLE END INTO HANDLE SOCKET AND PUMP JACK HANDLE TO RAISE LOAD



CORRECT LOAD CONTACT

- 3 **LIFTING ARM.** Inject grease into grease fitting.
- 4 **SADDLE AND LINKAGE.** Use light oil on all moving and pivoting parts.
- 5 **HANDLE SOCKET AND PIVOT BOLTS.** Use light oil to lubricate pivot bolts.
- 6 **PLUNGER AND PLUNGER PIN.** Use grease to lubricate connection between pump plunger and pin in handle socket.

NORMAL MAINTENANCE PROCEDURES

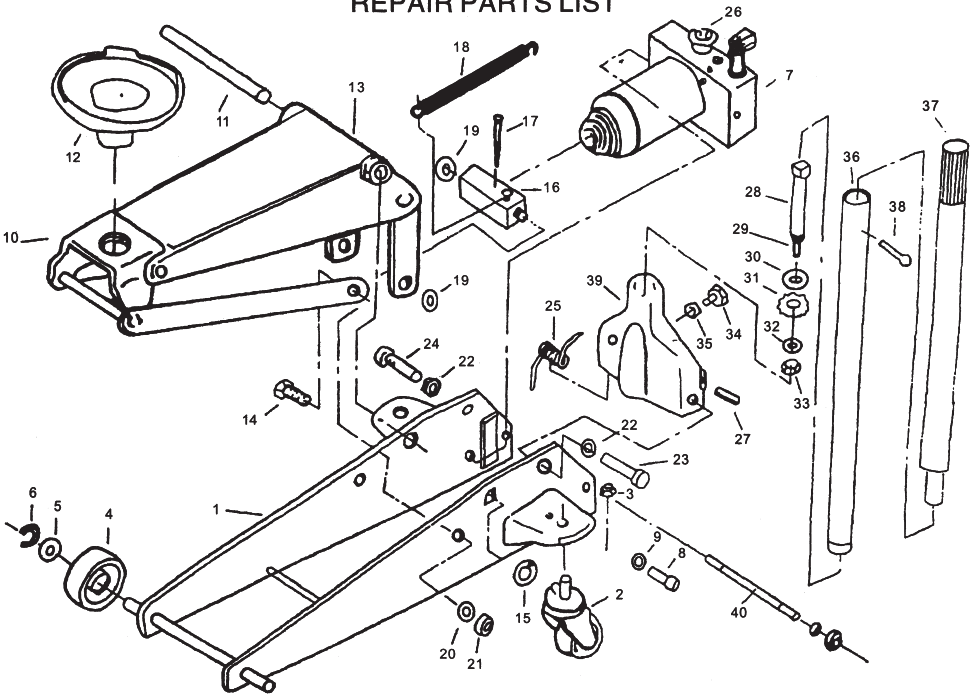
HYDRAULIC OIL Always use good quality hydraulic jack oil. If possible do not mix the type of oil. At no time use any other type of oil or fluid. When filling with hydraulic oil do not permit dirt or any other substance to enter the hydraulic system.

Check the hydraulic system every 4 months to make sure it is free from corrosion. If corrosion is present clean the part and wipe it with an oily cloth. Always store the jack in fully lowered position.

CAUTION This jack is designed for lifting purposes only. It must not be used as a jack stand to hold load for any prolonged period.

- After jacking always use safety stands to support load.
- After use jack on level solid ground. Do not use jack on slope or angle.
- Do not attempt to move jack when it is under load
- Do not adjust safety valve. Return jack to service agent for any adjustments.
- Do not make alterations of any kind to design or structure of jack.
- Do not overload the jack beyond its rated capacity.

REPAIR PARTS LIST



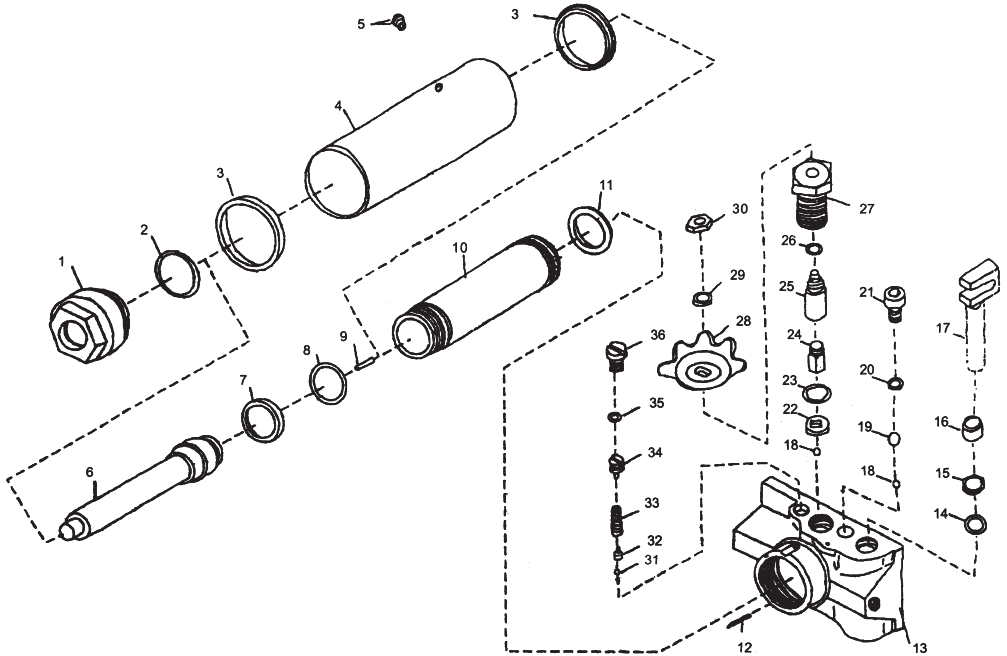
Ref. No.	Part Number	Qty	Description
1	LZD2.5	1	Side Plate Weldment
2	LZD2.4	2	Caster Assembly
3	GB41-76	2	Locknut
4	LZD2-2	2	Wheel
5	LZD2-3	2	Washer(Axle)
6	GB894-76	2	Retaining Ring
7	LZD2.6	1	Rower Unit Assembly
8	GB70-76	2	Socket Head Cap Screw
9	GB859-76	2	Split Lockwasher
10	LZD2-2	1	Lift Arm Assembly
11	LZD2-8	1	Shaft Arm
12	LZD2-1	1	Saddle
13	GB1152-79	1	Grease Fitting
14	LZD2-7	2	Bolt,Link
15	GB894-87	1	Reatining Ring
16	LZD2 3-1	1	Block,Link(Ram)
17	GB91-76	1	Cotter Pin
18	LZD2-9	1	Return Spring
19	GB894-76	2	Retaining Ring
20	GB93-76	2	Lockwasher

Ref. No.	Part Number	Qty	Description
21	GB54-76	2	Hex Nut
22	GB93-76	2	Lockwasher
23	LZD2-10	1	Bolt
24	LZD2 10	1	Bolt
25	LZD2-11	1	Torsion Spring
26	LZD2 6-8	1	Valve Gear
27	LZD2 -13	1	Plunger Pin
28	LZD2.7-2	1	Gear Shaft
29	GB91-76	1	Cotter Pin
30	LZD2.7-3	1	Washer
31	LZD2 7-1	1	Gear, Handle Socket
32	GB895 76	1	Lock washer
33	GB41-76	1	Hex Nut
34	LZD2 7-4	1	Handle Bolt
35	LZD2 7-5	1	Spacer
36	LZD2.8	1	Handle,Lower
37	LZD2 14	1	Handle,Upper
38	GB67-76	1	Hex Head Screw
39	LZD2.7.1	1	Handle Socket
40	LZD21/2-2	1	Axle

'WE RESERVE THE RIGHT TO ALTER DESIGNS AND SPECIFICATIONS AT ANY TIME WITHOUT PRIOR NOTICE

PEPAIR PARTS LIST

POWER UNIT ASSEMBLY



Ref. No.	Part Number	Qty	Description
1	LZD2.6-2	1	Tank Nut
2	GB1235-76	1	O-Ring
3	LYO2A-18.04	2	O-Ring
4	LZD2.6-4	1	Reservoir
5	QY5A-23	1	Oil Fill Plug
6	LZD2-1/2.3-1 I	1	Ram
7	LZD2-1/2.3-3	1	O-Ring
8	LZD2-1/2.3-4	1	O-Ring
9	GB879-86	1	Pin A4 x18
10	LZD2-1/2.3-2	1	Cylinder
11	LZD2.6-7II	1	Washer
12	LZD2.6-5	1	Strainer Mesh
13	LZD2-1/2.3-5 I	1	Valve Block
14	LZD2.6-21 II	1	O-Ring
15	LZD2.6-22II	1	Backup Ring
16	JF1-1/2.2-21	1	Wiper
17	LZD2.6-20II	1	Plunger
18	GB308-84	2	Ball 6.0000 G200 b

Ref. No.	Part Number	Qty	Description
19	GB308-84	1	Ball 9.0000 G200 b
20	LZD2.6-23	1	Seal Washer
21	GB70-85	1	Screw M12 x18-Q
22	LZCD3A.4-7	1	Guide Plate
23	LZCD3A.4-6	1	O-Ring
24	LZCD3A.4-5	1	Actuating Bar
25	LZCD3A.4-3	1	Release Valve Bar
26	GB3452.1-82	1	O-Ring 18001250
27	LZCD3A.4-4	1	Release Valve Base
28	LZD2.6-8	1	Release Valve Gear
29	GB97.1-85	1	Washer 8
30	GB6170-85	1	Nut M8
31	GB308-84	1	Ball 4.0000 G200 b
32	LZD2.6-18	1	Plunger
33	LZD2.6-19	1	Spring
34	LZD2.6-17	1	Overload Valve Screw
35	GB3452.1-82	1	O-Ring 18000875
36	LZCD3A.4-13	1	Plug Screw